
AVAILABLE FOR LEASE

FLEX / OFFICE / RETAIL
SPACE AVAILABLE
IN CHANDLER, AZ

1727 N ARIZONA AVE
CHANDLER, AZ 85225



MATT ZACCARDI
D: 480.966.7625
M: 602.561.1339
Mzaccardi@cpi.az.com



COMMERCIAL PROPERTIES INC.

Locally Owned. Globally Connected. COFAC

TEMPE: 2323 W. University Drive, Tempe, AZ 85281 | 480.966.2301
SCOTTSDALE: 8777 N. Gainey Center Dr., Suite 245, Scottsdale, AZ 85258 | www.cpi.az.com



About the Property

ADDRESS

1727 N Arizona Ave
Chandler, AZ 85225

PROPERTY TYPE

±18,880 SF Multi-Tenant
Office/Retail Center

YEAR BUILT

1976

YEAR RENOVATED

2001

ZONING

C-3, City of Chandler

The information contained herein has been obtained from various sources. We have no reason to doubt its accuracy; however, J & J Commercial Properties, Inc. has not verified such information and makes no guarantee, warranty or representation about such information. The prospective buyer or lessee should independently verify all dimensions, specifications, floor plans, and all information prior to the lease or purchase of the property. All offerings are subject to prior sale, lease, or withdrawal from the market without prior notice.

11.22.24

Availability

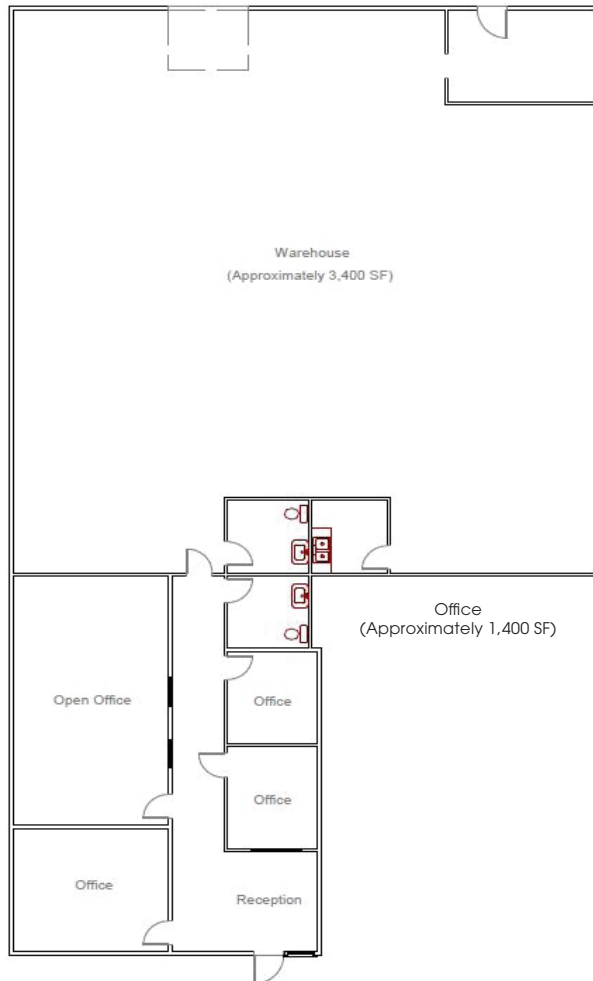
Suite 8/12

Lease Rate: \$1.50 IG

±4,800 SF

Layout Includes:

Reception/Waiting, 3 Offices, Bullpen/Executive Office, 3 Rest Rooms, Break Room, Warehouse, 10x12 Roll Up Door



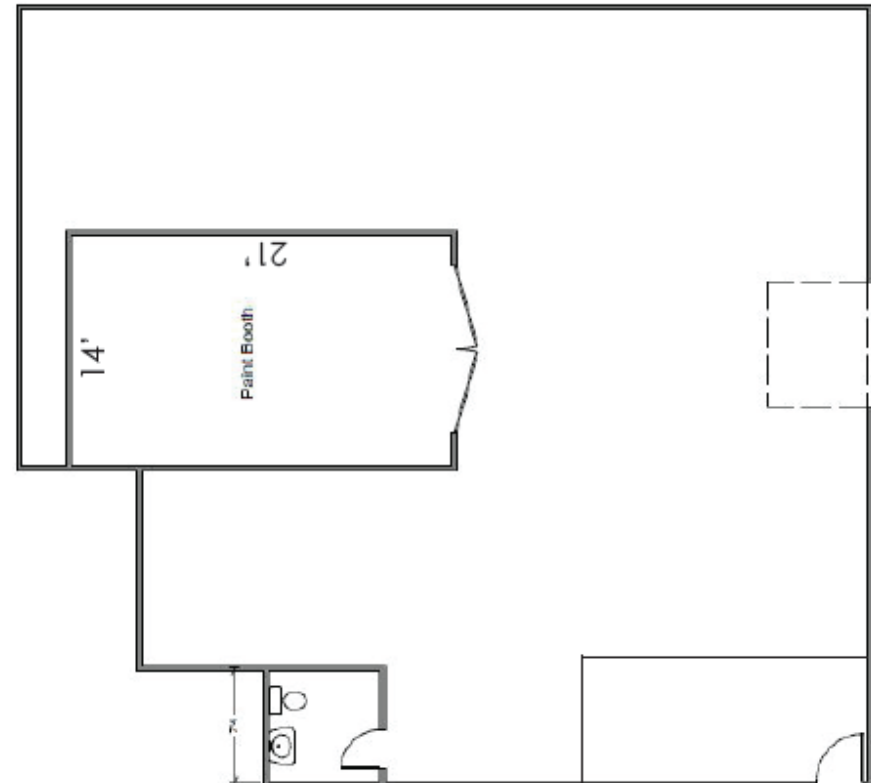
Suite 11

Lease Rate: \$1.50 IG

±2,656 SF

Layout Includes:

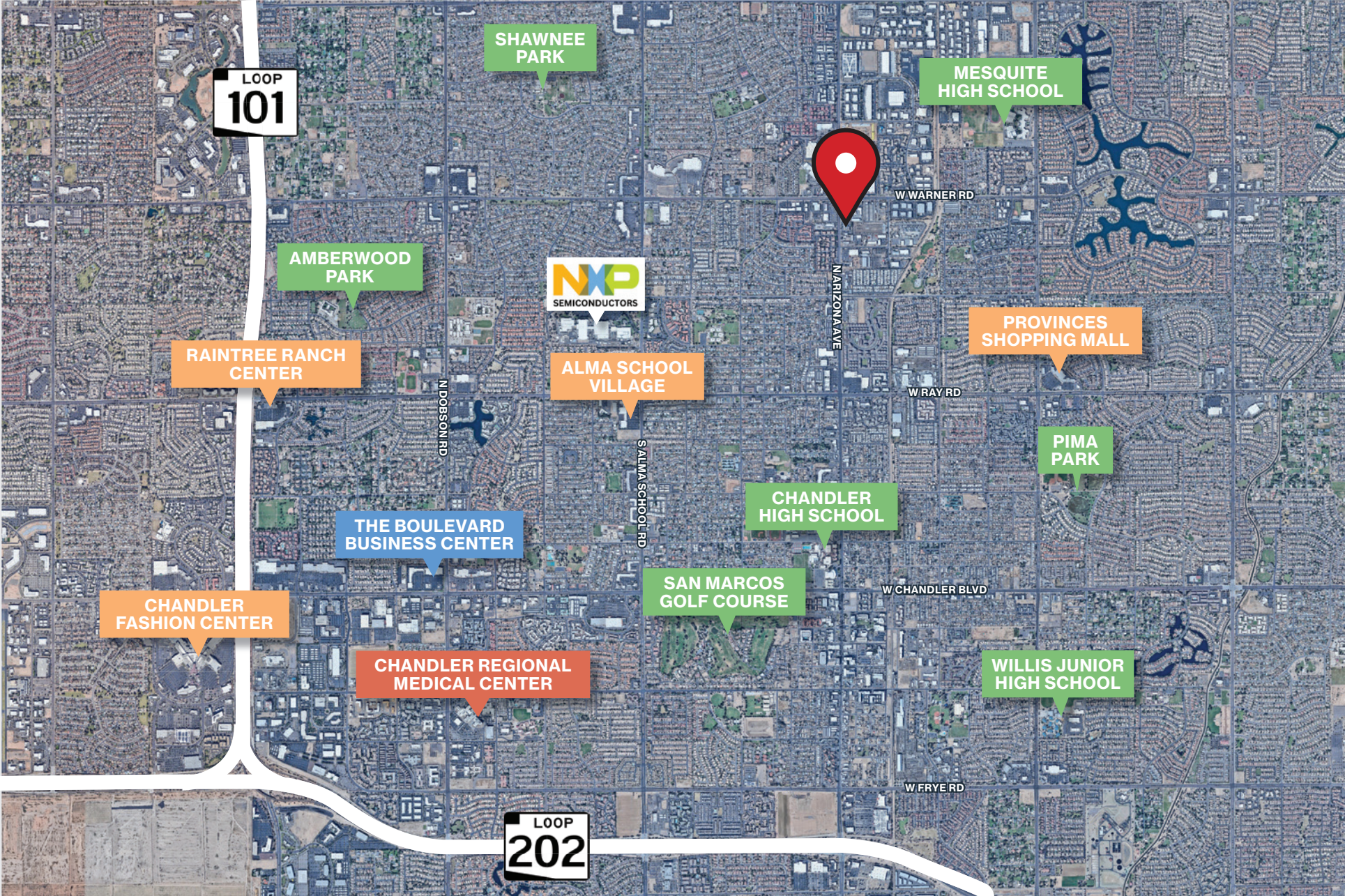
Reception/Waiting, Open Warehouse, Paint Booth, Rest Room, 10x12 Roll Up Door



Property Photos



FLEX / OFFICE / RETAIL SPACE AVAILABLE FOR LEASE



Demographics

DEMOGRAPHIC SUMMARY

1727 North Arizona Avenue, Chandler, Arizona, 85225

Ring of 3 miles

KEY FACTS

147,953

Population



56,701

Households

36.8

Median Age

\$73,862

Median Disposable Income

EDUCATION

6.7%

No High School Diploma



21.4%

High School Graduate



32.3%

Some College/
Associate's Degree



39.5%

Bachelor's/Grad/Prof Degree

INCOME



\$90,703

Median Household Income



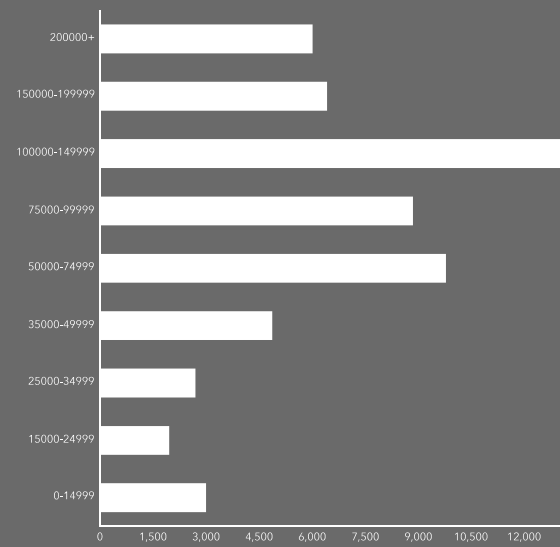
\$44,004

Per Capita Income

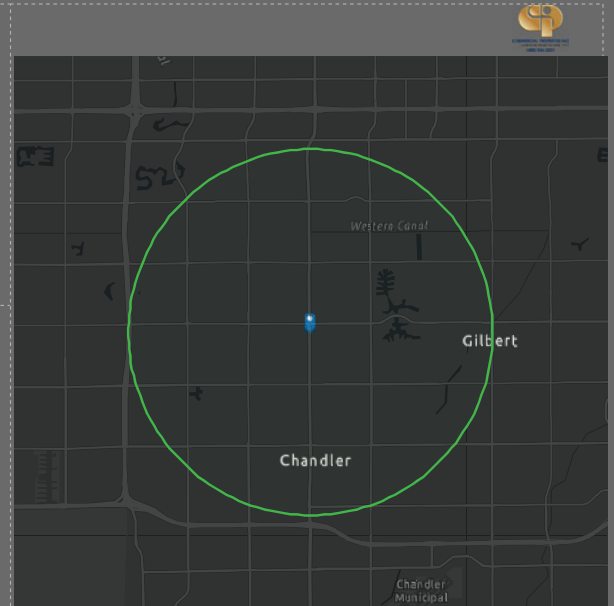


\$258,942

Median Net Worth



HOUSEHOLD INCOME



EMPLOYMENT



White Collar

71.2%



Blue Collar

16.7%



Services

14.5%

2.9%

Unemployment Rate

Source: This infographic contains data provided by Esri (2024, 2029). © 2024 Esri