



FINLAYPACIFIC  
commercial real estate

639 HOWARD STREET  
SAN FRANCISCO, CA

Ground floor and Lower level  
8,417 square feet



For information, please contact our  
exclusive listing agent:

**Matthew Brasler**

Lic.01260686

Principal

415.271.5297

[mbrasler@finlaypacific.com](mailto:mbrasler@finlaypacific.com)



**Finlay Pacific**

233 Sansome Street

Suite 700

San Francisco, CA 94104

[www.finlaypacific.com](http://www.finlaypacific.com)





639 HOWARD STREET

SAN FRANCISCO, CA

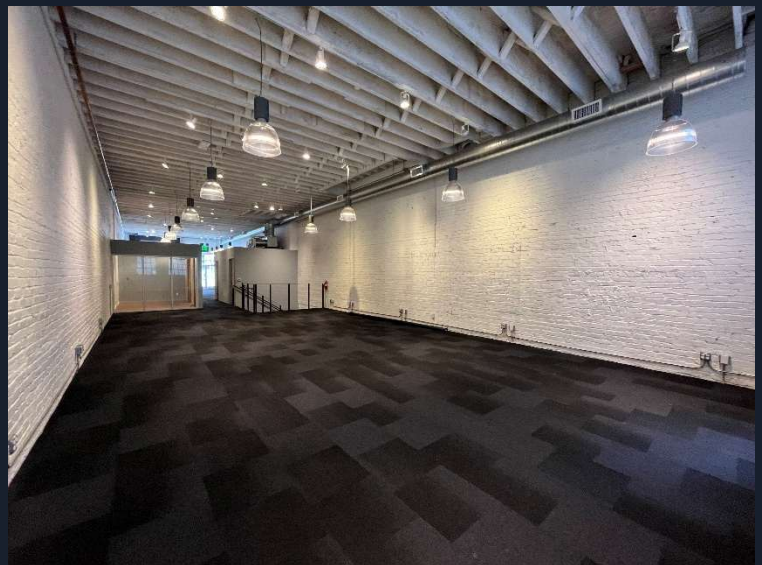
Ground and Lower – 8,417 sf

## Building Highlights

- Prime location – New Montgomery and Howard Streets
- Private entrance – 2<sup>nd</sup> floor walk up
- 12 foot, exposed wood ceilings with skylights
- Highway 280 and the Bay Bridge

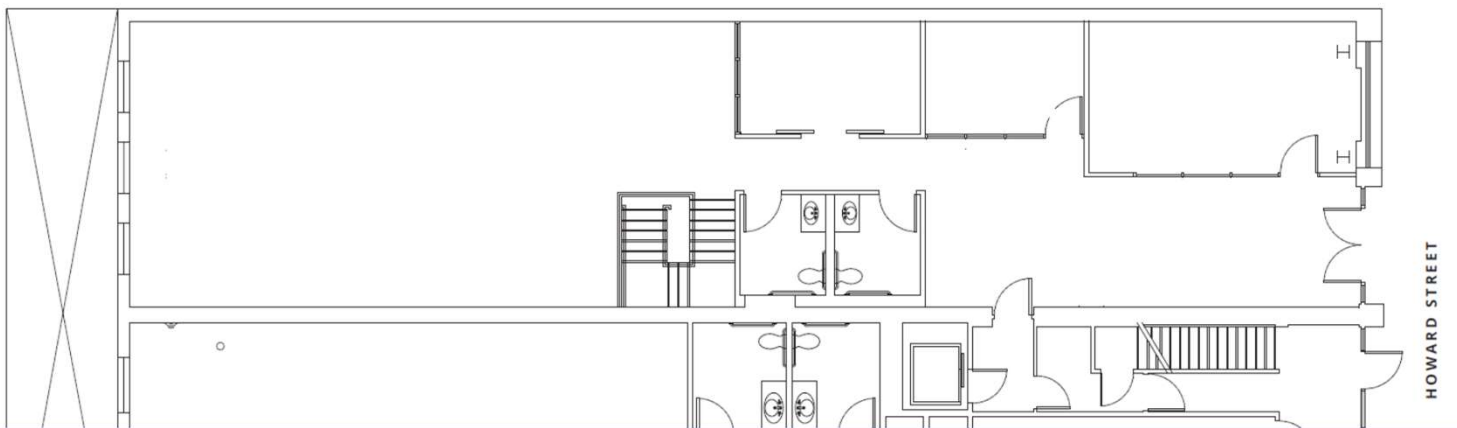
## Ground and LL Highlights ± 8,417 rsf

- 20+ workstations on ground floor
- 3 Ground floor conference rooms
- 5 LL conference rooms
- Open space for 40+ LL workstations
- Full kitchen with new cabinetry
- Great natural light and open deck
- Additional Furniture Available

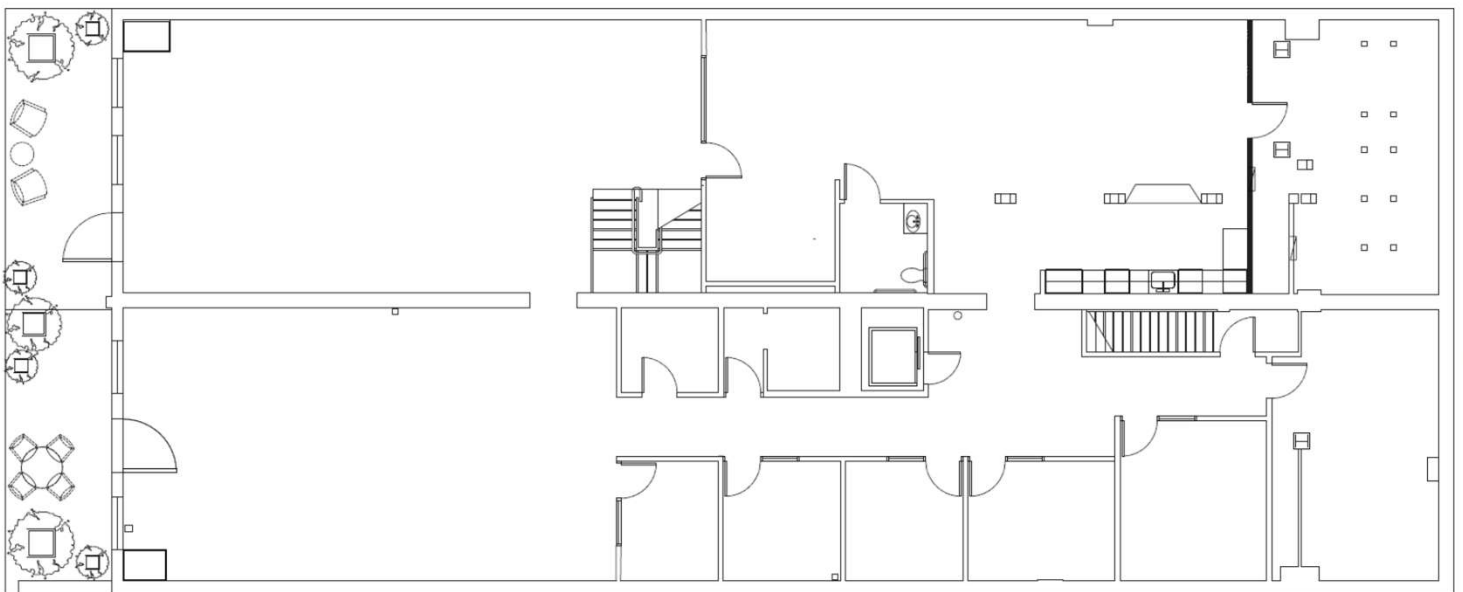




1st Floor



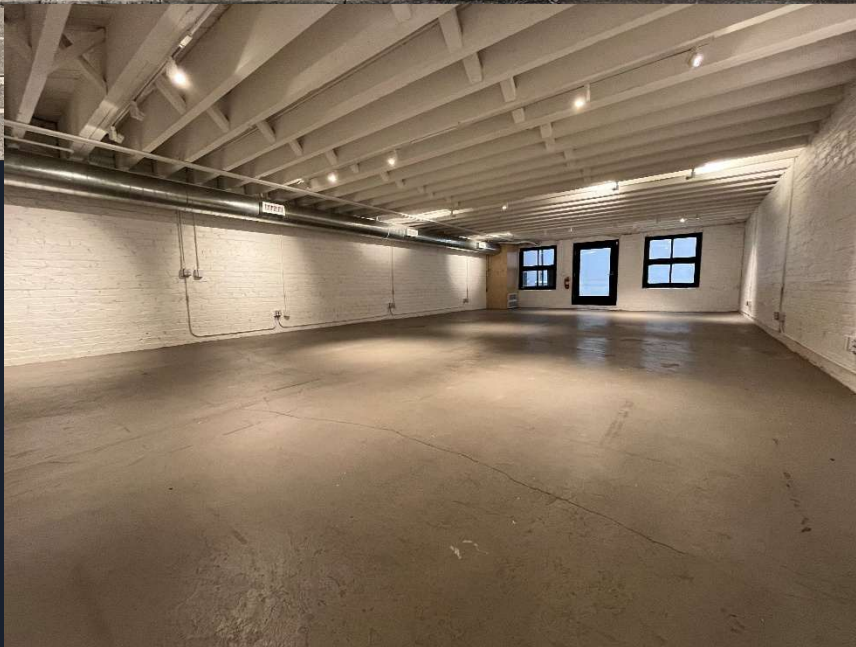
Lower Level







639 HOWARD STREET  
SAN FRANCISCO, CA  
Ground and Lower – 8,417 sf







## Contact Us

For information, please contact our  
exclusive listing agent:



### Matthew Brasler

Lic.01260686

Principal

415.271.5297

[mbrasler@finlaypacific.com](mailto:mbrasler@finlaypacific.com)



### Finlay Pacific

233 Sansome Street

Suite 700

San Francisco, CA 94104

[www.finlaypacific.com](http://www.finlaypacific.com)