



# 131 EXTENDED LN - SALE

131 Extended Lane, Anderson, SC 29625

**CARSON KELLY**

Associate  
803.640.5600  
[carson@mccoywright.com](mailto:carson@mccoywright.com)





## PROPERTY SUMMARY



### PROPERTY DESCRIPTION

Available for Sale or Lease!

Sale - \$249,000

Lease - \$11/SF NNN

This newly constructed commercial flex building offers an excellent opportunity for a variety of users. The 2,100 SF building sits on ±0.58 acres and is unzoned, allowing for flexible use. The property features four (4) 10'x10' bay doors, a full bathroom, and a fully insulated interior, making it ideal for warehouse, light industrial, service, or flex users. Spacious on-site parking, exterior lighting, and a functional layout enhance usability and convenience. Located just off Pearman Dairy Road, directly across from Westside High School, the property benefits from high traffic counts and excellent visibility along a very busy corridor. Don't miss this opportunity to purchase or lease a brand-new flex building in a high-growth area with great accessibility! Reach out to Listing Agent with any questions or interest.

### OFFERING SUMMARY

Sale Price:	\$249,000
Lot Size:	0.58 Acres
Building Size:	2,100 SF

DEMOGRAPHICS	1 MILE	3 MILES	5 MILES
Total Households	1,802	13,467	28,416
Total Population	4,215	31,985	69,514
Average HH Income	\$63,129	\$66,072	\$71,397



Carson Kelly, Associate | 803.640.5600 | carson@mccoywright.com



ADDITIONAL PHOTOS



Carson Kelly, Associate | 803.640.5600 | [carson@mccoywright.com](mailto:carson@mccoywright.com)



ADDITIONAL PHOTOS



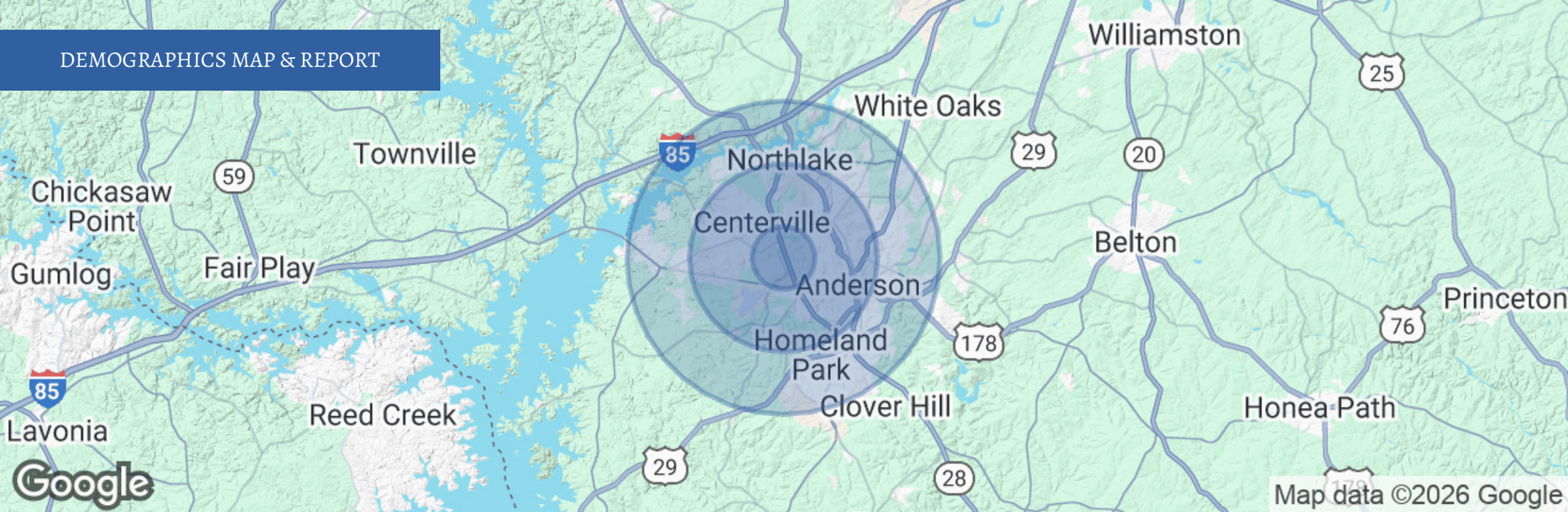
Pearman Dairy Road



Carson Kelly, Associate | 803.640.5600 | [carson@mccoywright.com](mailto:carson@mccoywright.com)



# DEMOGRAPHICS MAP & REPORT



POPULATION	1 MILE	3 MILES	5 MILES
Total Population	4,215	31,985	69,514
Average Age	40	41	41
Average Age (Male)	37	39	40
Average Age (Female)	41	42	43

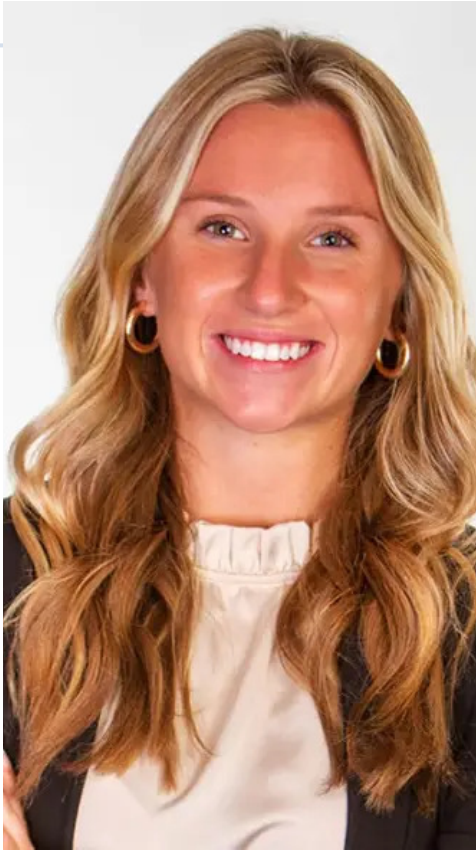
  

HOUSEHOLDS & INCOME	1 MILE	3 MILES	5 MILES
Total Households	1,802	13,467	28,416
# of Persons per HH	2.3	2.4	2.4
Average HH Income	\$63,129	\$66,072	\$71,397
Average House Value	\$152,316	\$203,336	\$226,724

Demographics data derived from AlphaMap



Carson Kelly, Associate | 803.640.5600 | carson@mccoywright.com



**CARSON KELLY**

Associate

**Direct:** 803.640.5600 **Cell:** 803.640.5600  
carson@mccoywright.com



**Carson Kelly, Associate** | 803.640.5600 | carson@mccoywright.com