



# 9 East 53<sup>rd</sup> St

(Between Fifth & Madison Avenues)

As Exclusive Agents, we are pleased to present the following for Lease:

## **Boutique Full-Floor Office**

*At the intersection of Culture, Commerce, & Convenience*

 **DouglasElliman**  
Commercial

575 MADISON AVENUE, NEW YORK, NEW YORK 10022

# 9 E 53<sup>rd</sup> Street

This boutique office building offers a prestigious address between Fifth and Madison Avenues, in the core of Manhattan's sought-after Plaza District.

With direct elevator access and two private bathrooms, this full-floor office is just steps from the E/M subway entrance. The building provides seamless access to Grand Central, Rockefeller Center, Central Park, and the Museum of Modern Art (MoMA).

Ideal for discerning tenants seeking a high-end, professional environment in one of New York's most iconic neighborhoods.

**Location** Plaza District between Fifth & Madison Avenues

**Space** Approx. 2,000 RSF  
Entire 3<sup>rd</sup> Floor

**Rent** Upon Request

**Possession** Immediate

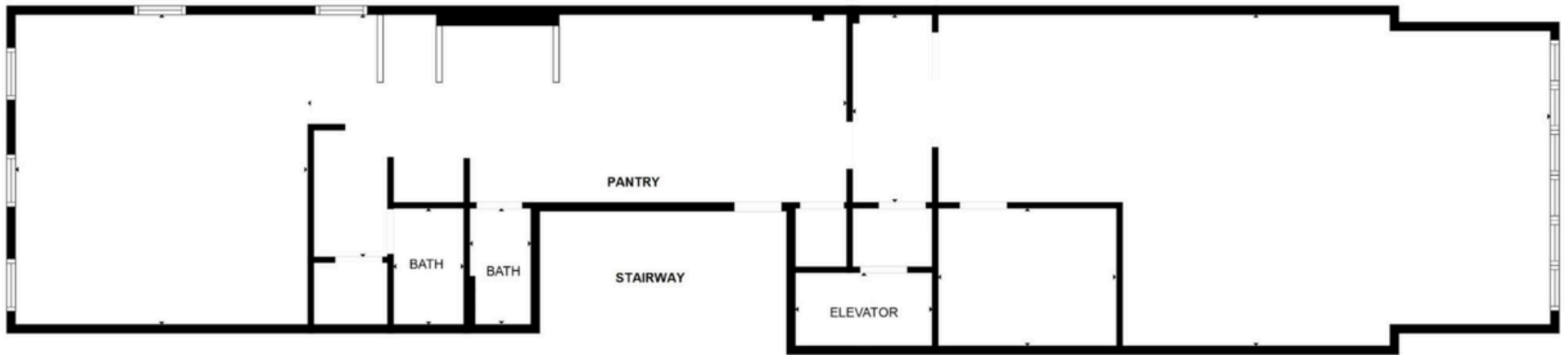
**Features**

- Direct Elevator Access
- Two Private Restrooms



# 9 E 53<sup>rd</sup> St, Boutique Office

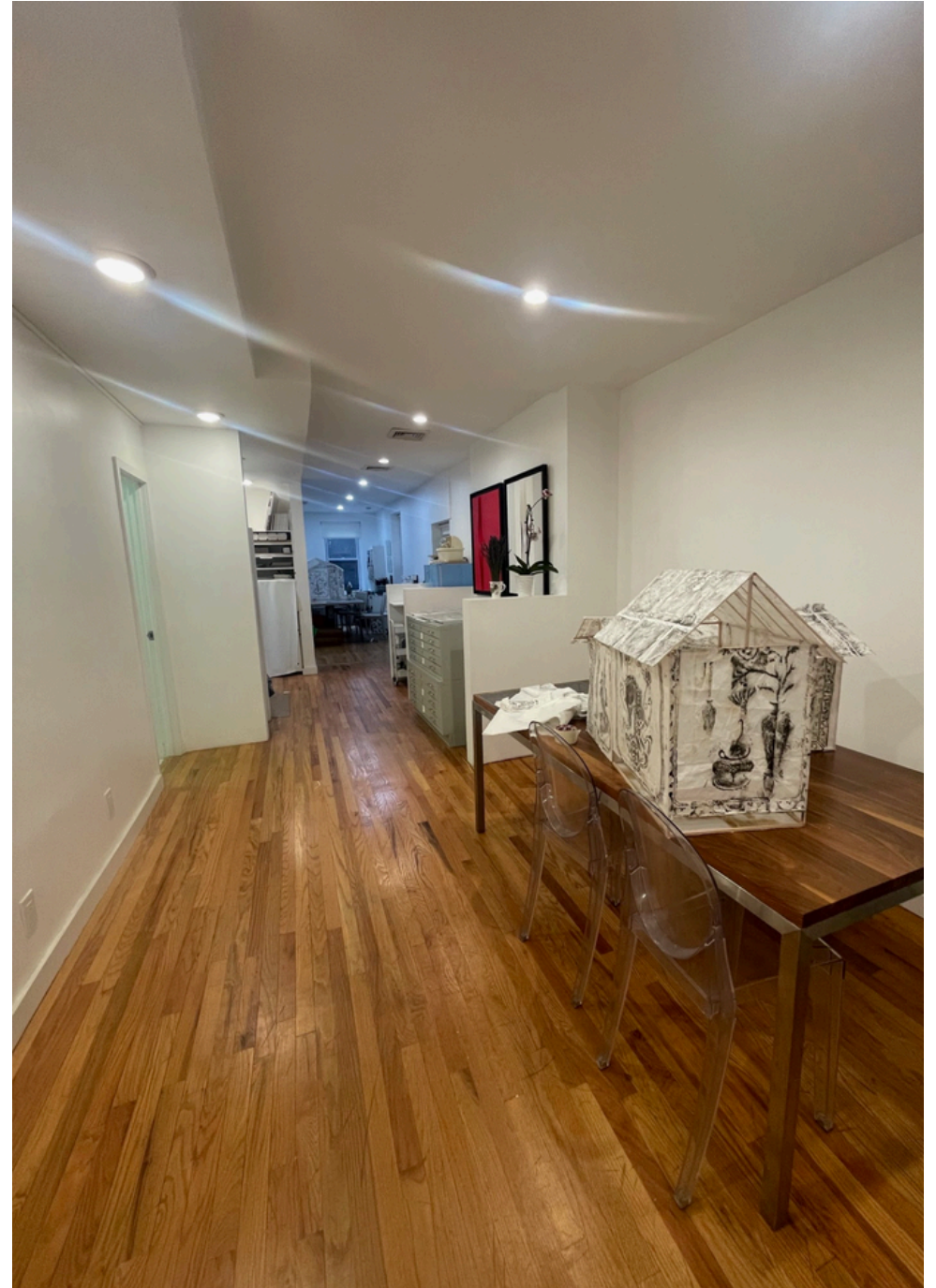
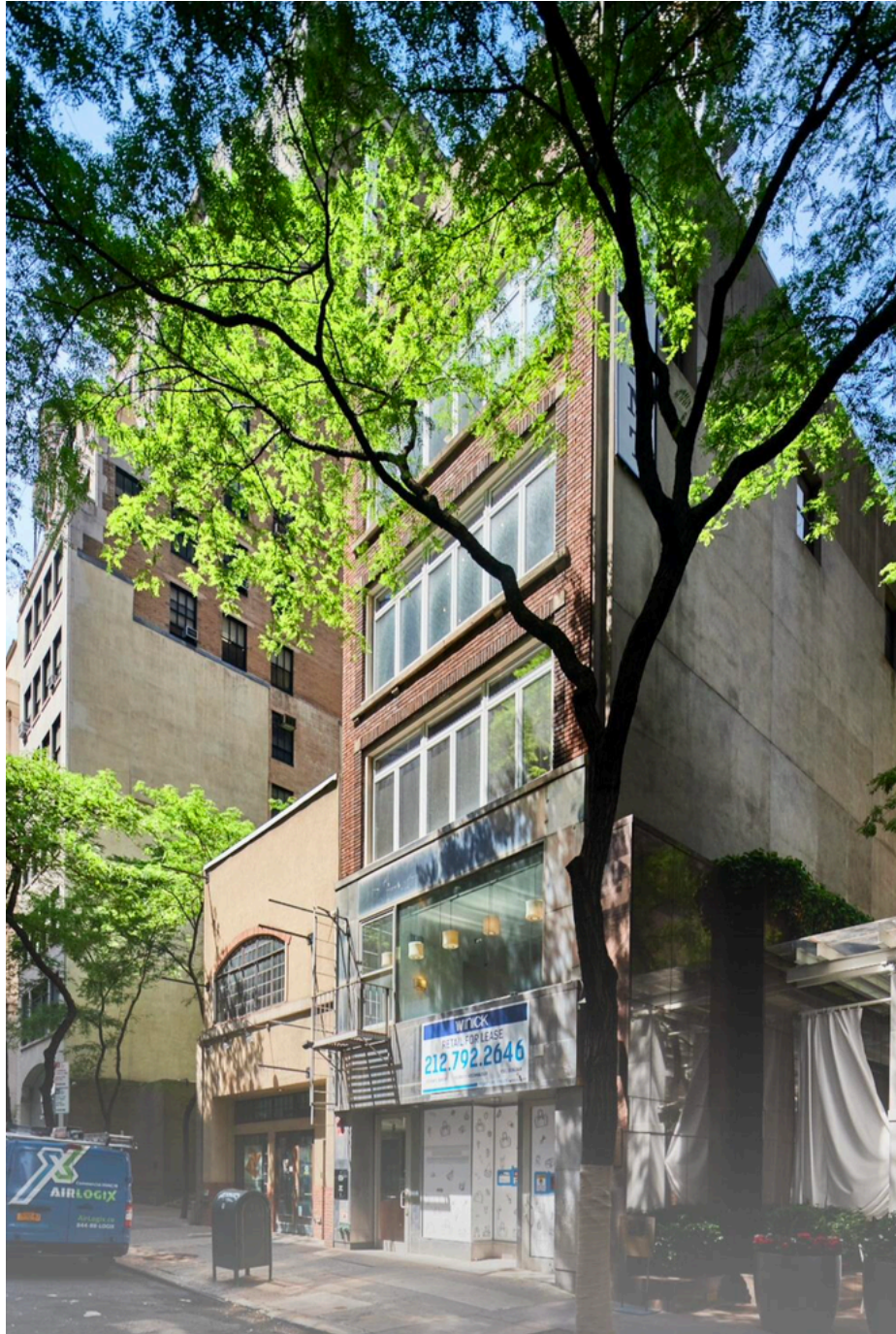
FLOOR PLAN

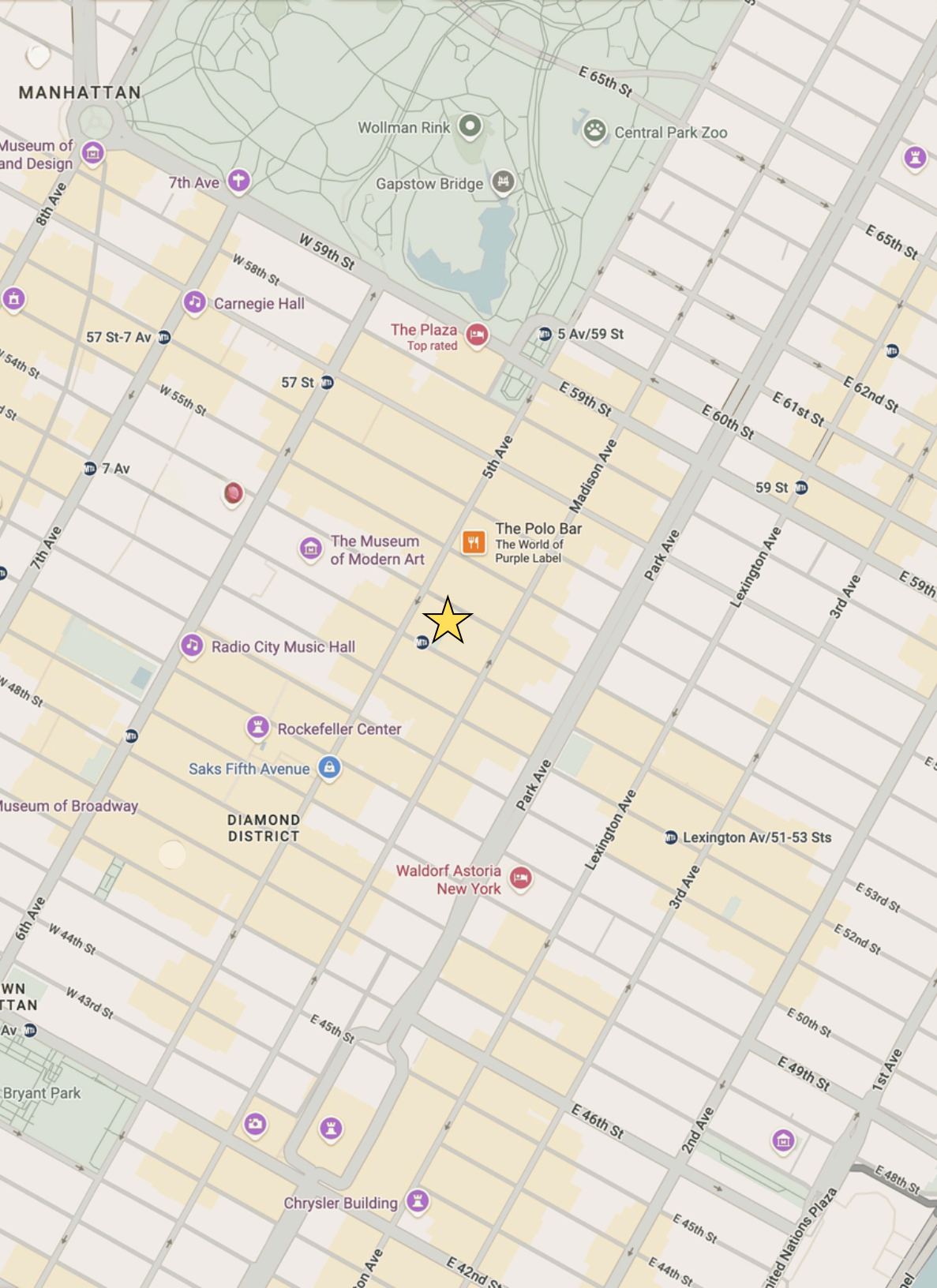


All dimensions are approximate and subject to normal construction variances and tolerances. Square footages may exceed the usable floor area. Plans and dimensions are subject to change without notice. Furniture and finishes depicted are for illustrative purposes only and may not reflect the actual layout or scale. Prospective tenants/purchasers should verify all measurements and specifications independently. Broker and owner make no representations or warranties except as specifically set forth in a lease or contract of sale.

# 9 E 53<sup>rd</sup> St, Boutique Office

ADDITIONAL PHOTOS





For further information and inspection, please contact:

**Louis Puopolo**

Division Head NYC - DE Commercial

Licensed Associate Real Estate Broker

917-374-0099

[louis.puopolo@elliman.com](mailto:louis.puopolo@elliman.com)

**Alex Furst**

Executive Director - DE Commercial

Licensed Associate Real Estate Broker

347-281-3165

[alexander.furst@elliman.com](mailto:alexander.furst@elliman.com)

**Kristin Irwin**

Operations Manager - DE Commercial

Licensed Associate Real Estate Salesperson

336-420-1993

[kristin.irwin@elliman.com](mailto:kristin.irwin@elliman.com)



©2025 DOUGLAS ELLIMAN COMMERCIAL, LLC. ALL RIGHTS RESERVED. THE INFORMATION CONTAINED IN THIS DOCUMENT IS PROPRIETARY TO DOUGLAS ELLIMAN COMMERCIAL, LLC AND SHALL BE USED SOLELY FOR THE PURPOSES OF EVALUATING THIS PROPOSAL. ALL SUCH DOCUMENTATION AND INFORMATION REMAINS THE PROPERTY OF DOUGLAS ELLIMAN COMMERCIAL, LLC AND SHALL BE KEPT CONFIDENTIAL. REPRODUCTION OF ANY PART OF THIS DOCUMENT IS AUTHORIZED ONLY TO THE EXTENT NECESSARY FOR ITS EVALUATION. IT IS NOT TO BE SHOWN TO ANY THIRD PARTY WITHOUT THE PRIOR WRITTEN AUTHORIZATION OF DOUGLAS ELLIMAN COMMERCIAL, LLC. ALL INFORMATION CONTAINED HEREIN IS FROM SOURCES DEEMED RELIABLE; HOWEVER, NO REPRESENTATION OR WARRANTY IS MADE AS TO THE ACCURACY THEREOF.