

# 3,000 SF Professional Office Space - Idaho Falls

2647 14th N., Idaho Falls, ID 83406



**VENTURE ONE**  
P R O P E R T I E S  
C O M M E R C I A L R E A L E S T A T E

**Shane Murphy**

Principal/Broker  
208.542.7979 Office  
208.521.4564 Cell  
shane@ventureoneproperties.com  
ventureoneproperties.com

434 Gladstone St.  
P.O. Box 2363  
Idaho Falls, ID 83403





# Majestic Park

2647 14th N., Idaho Falls, ID 83406

---

## HIGHLIGHTS

- Spacious office suites surrounding large bull pen
- 6 Hard Wall Offices
- Full Kitchen
- Large Conference Room
- Expansive Parking lot
- Separate outdoor access to lower level

---

## DETAILS

---

Lease Rate:	\$12/SF Full Service
Suite 2647:	3,000 SF

---



**Shane Murphy**

Principal/Broker  
208.542.7979 Office  
208.521.4564 Cell  
shane@ventureoneproperties.com  
ventureoneproperties.com

434 Gladstone St.  
P.O. Box 2363  
Idaho Falls, ID 83403



# AERIAL

2647 14th N., Idaho Falls, ID 83406



**VENTURE ONE**  
P R O P E R T I E S  
C O M M E R C I A L R E A L E S T A T E

Shane Murphy

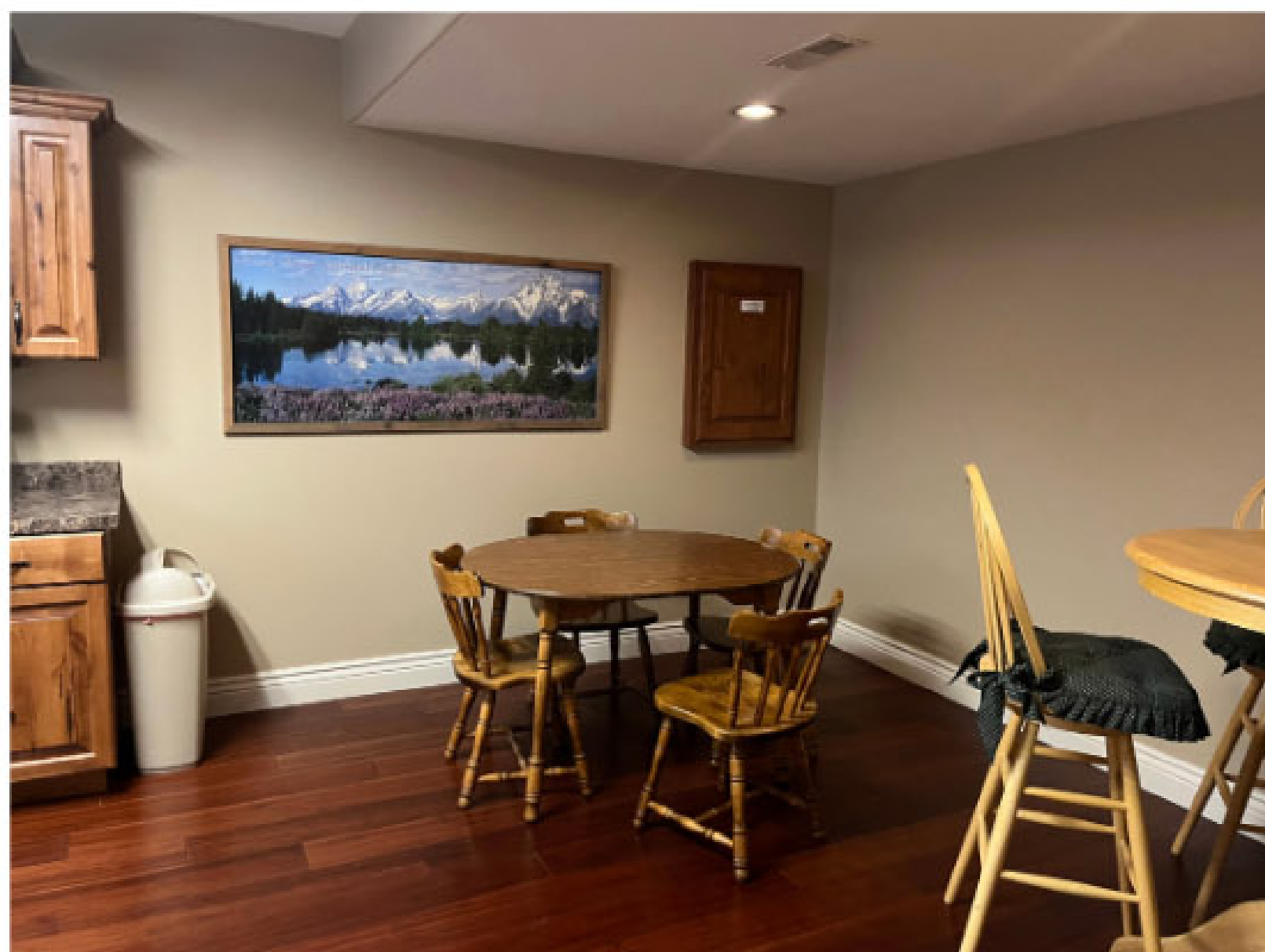
Principal/Broker  
208.542.7979 Office  
208.521.4564 Cell  
shane@ventureoneproperties.com  
ventureoneproperties.com

434 Gladstone St.  
P.O. Box 2363  
Idaho Falls, ID 83403



# PHOTOS

2647 14th N., Idaho Falls, ID 83406



**VENTURE ONE**  
PROPERTIES  
COMMERCIAL REAL ESTATE

**Shane Murphy**

Principal/Broker  
208.542.7979 Office  
208.521.4564 Cell  
shane@ventureoneproperties.com  
ventureoneproperties.com

434 Gladstone St.  
P.O. Box 2363  
Idaho Falls, ID 83403



# PHOTOS

2647 14th, Idaho Falls, 83406



**VENTURE ONE**  
P R O P E R T I E S  
C O M M E R C I A L R E A L E S T A T E

Shane Murphy

Principal/Broker  
208.542.7979 Office  
208.521.4564 Cell  
shane@ventureoneproperties.com  
ventureoneproperties.com

434 Gladstone St.  
P.O. Box 2363  
Idaho Falls, ID 83403



---

# Broker Profile



## Shane Murphy

Principal/Broker

208.542.7979 Office

208.521.4564 Cell

shane@ventureoneproperties.com

ventureoneproperties.com

Shane is a focused, organized, and highly motivated individual who has been involved in all aspects of commercial real estate, from the land development process, to property sales, leasing, and investment since 2001. He specializes in retail, land development, and investment properties.

Shane has developed special relationships with property owners, major tenants, and government agencies that give his clients the resources needed for locating in Eastern Idaho. In addition, Shane has regional and national contacts to broaden the acquisition and disposition capabilities of properties while serving local investors and clients for their business needs.



## Shane Murphy

Principal/Broker

208.542.7979 Office

208.521.4564 Cell

shane@ventureoneproperties.com

ventureoneproperties.com

434 Gladstone St.

P.O. Box 2363

Idaho Falls, ID 83403