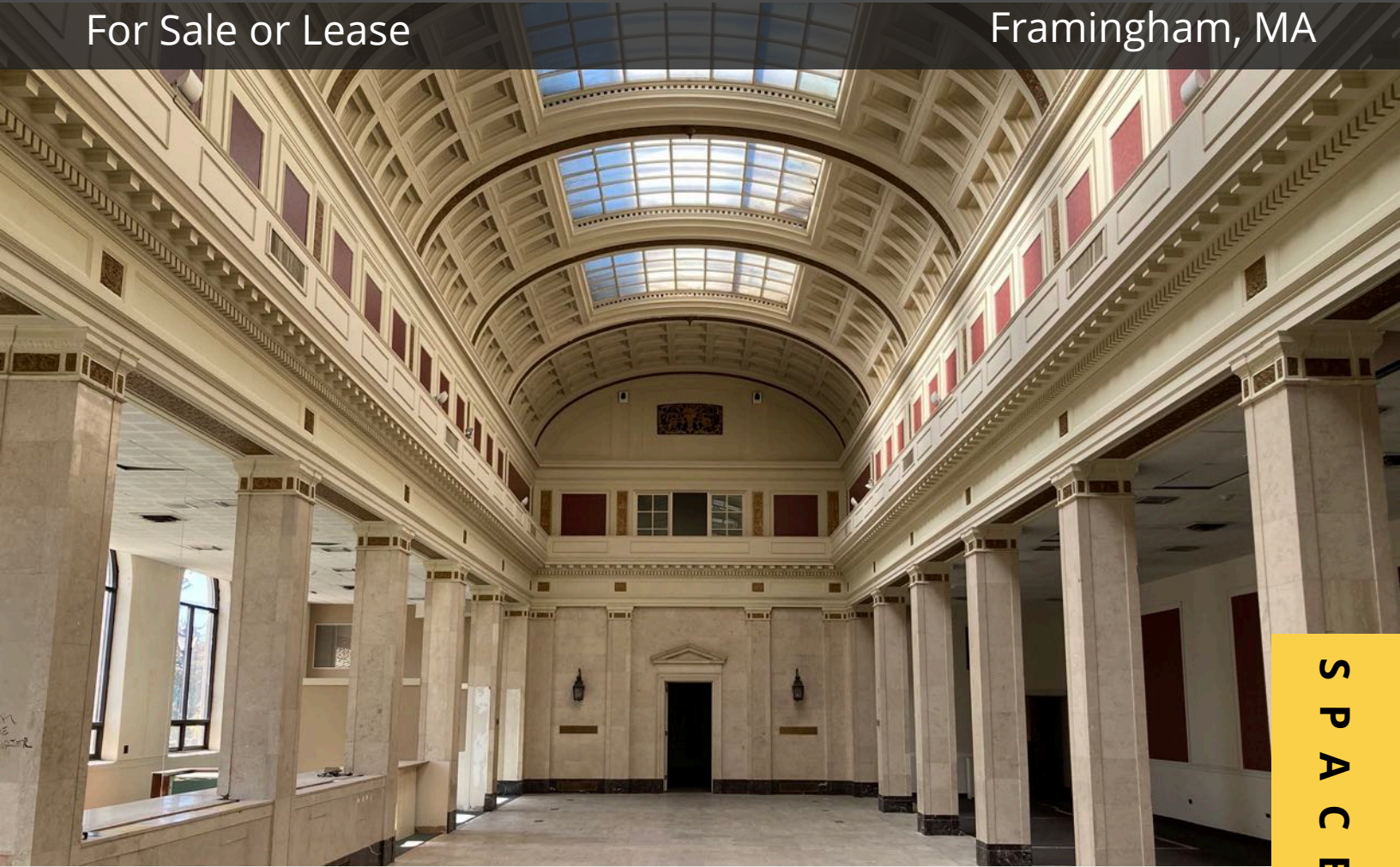


# OFFICE/RETAIL SPACE

22,000+ SF  
For Sale or Lease

74 Concord St & 15 Park St  
Framingham, MA



SPACE FOR SALE / LEASE

**AVAILABLE (APPROX SF):**

22,000+ SF

**USES:**

Office/Retail (CB Zoning)

**OFFERED FOR SALE:** \$2,500,000

**OFFERED FOR LEASE:** Negotiable

**NEARBY TENANTS:**

Union House, Jack's Abby Craft Lagers, Pho Dakao, Amazing Things Art Center, Terra Brasilis Restaurant, Loring Ice Arena and much more!

The information contained herein has been obtained through sources deemed reliable by JMJ Commercial Realty, Inc., but cannot be guaranteed for its accuracy. We recommend to the Buyer or Tenant that any information, which is of special interest, should be obtained through independent verification.

**LOCATION:**

Downtown Framingham, walking distance to Framingham Commuter Rail stop and City Hall.

**SUMMARY:**

Two stunning historic properties available for sale or lease in the heart of downtown Framingham, walking distance to City Hall and the MBTA. Former location of Framingham Savings Bank. 74 Concord consists of over 12,000+ sf, and 15 Park St with over 10,000+ sf. Bring your business and creativity to the changing landscape of downtown Framingham. Call for more information!



**JMJ Commercial Realty**  
935 Great Plain Avenue #261  
Needham, MA 02492  
[www.jmj-cre.com](http://www.jmj-cre.com)

**Josh Seadia**  
Principal  
617-605-5674  
[josh@jmj-cre.com](mailto:josh@jmj-cre.com)

# Office/Retail Space for Sale /Lease - 74 Concord St & 15 Park St Framingham, MA

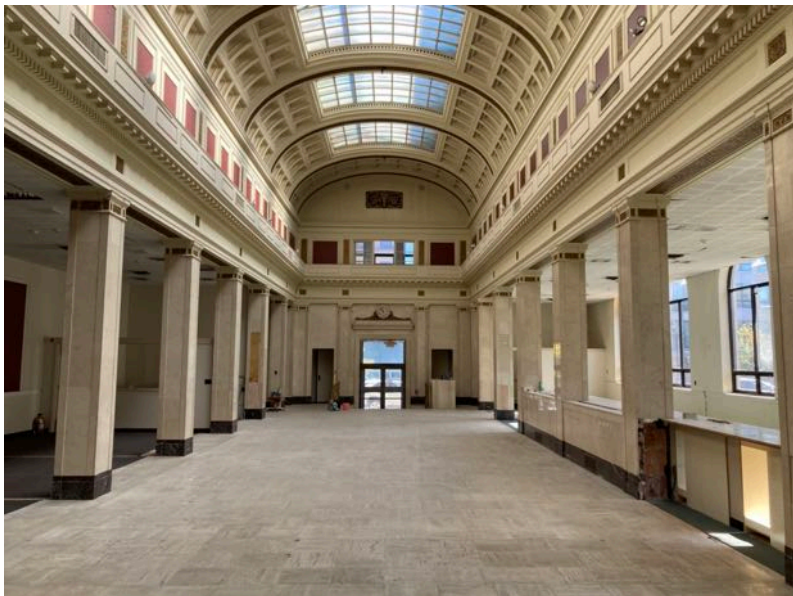
## PROPERTY PHOTOS



74 Concord St - Exterior



15 Park St - Exterior



74 Concord St - Interior



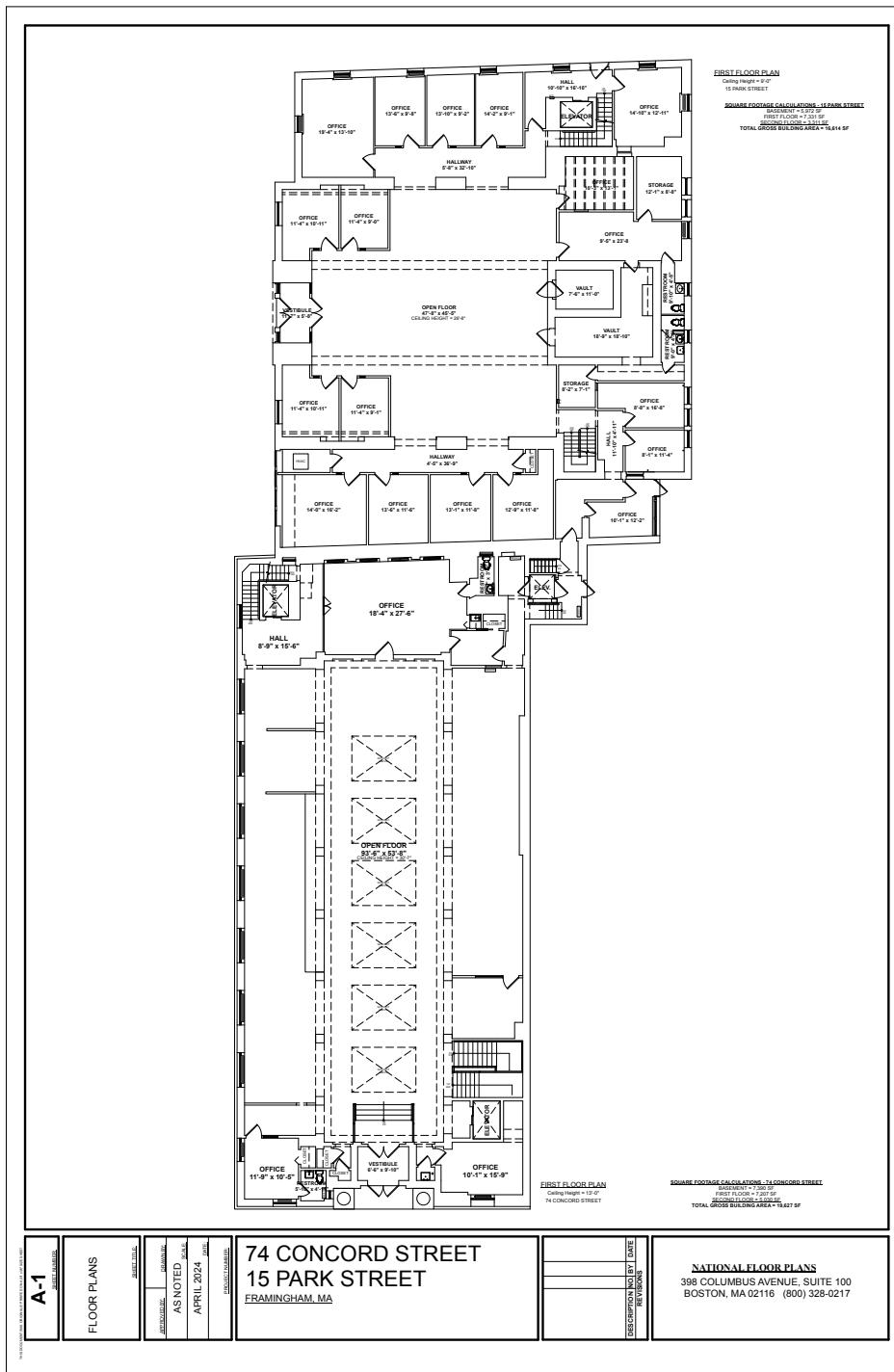
15 Park St - Interior



**JMJ Commercial Realty**  
935 Great Plain Avenue #261  
Needham, MA 02492  
[www.jmj-cre.com](http://www.jmj-cre.com)

**Josh Seadia**  
Principal  
617-605-5674  
[josh@jmj-cre.com](mailto:josh@jmj-cre.com)

# 74 CONCORD ST & 15 PARK ST - FLOOR PLAN - 1ST FLOOR



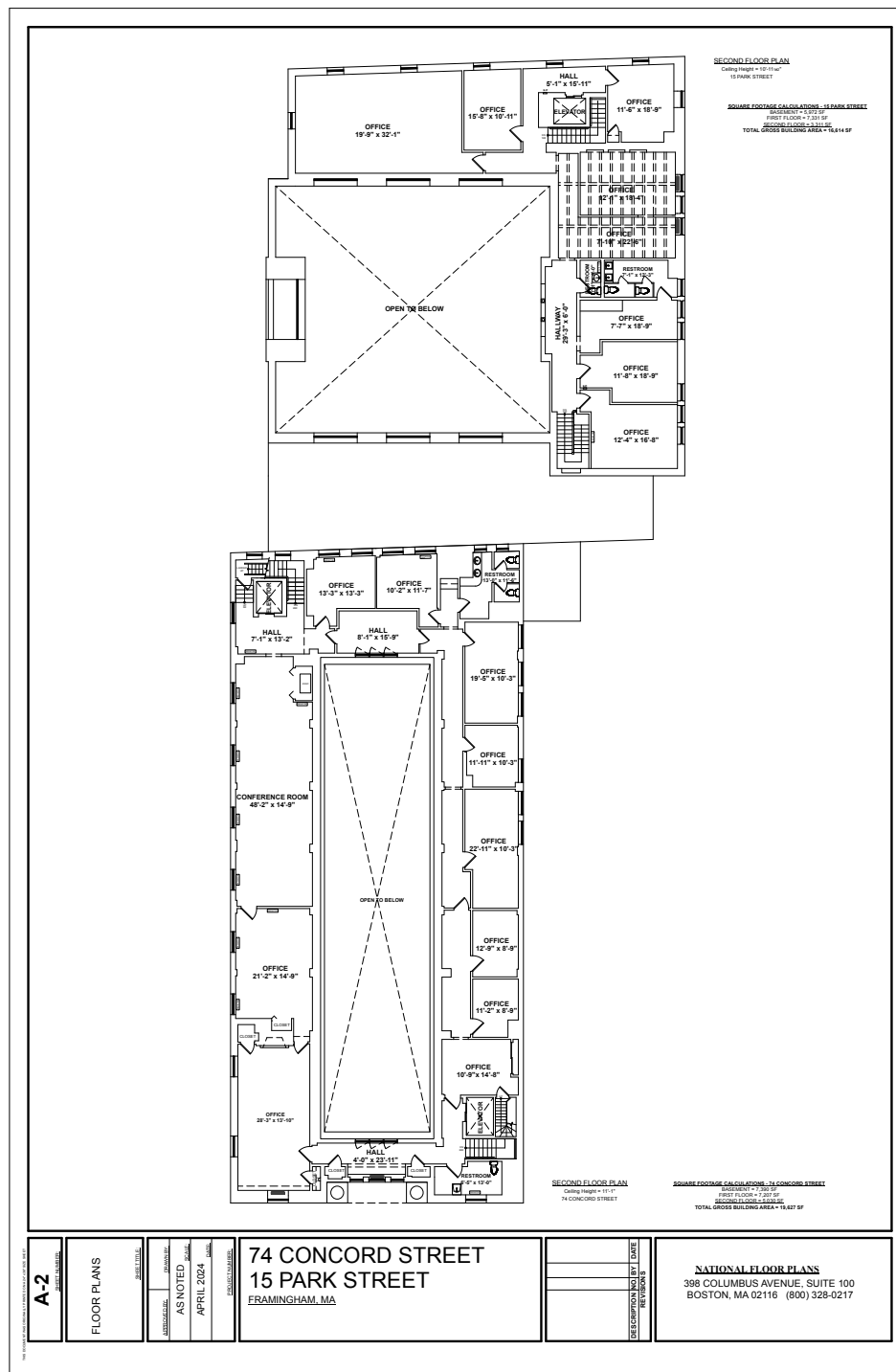
The information contained herein has been obtained through sources deemed reliable by JMJ Commercial Realty, Inc., but cannot be guaranteed for its accuracy. We recommend to the Buyer or Tenant that any information, which is of special interest, should be obtained through independent verification.



**JMJ Commercial Realty**  
935 Great Plain Avenue #261  
Needham, MA 02492  
[www.jmj-cre.com](http://www.jmj-cre.com)

**Josh Seadia**  
Principal  
617-605-5674  
[josh@jmj-cre.com](mailto:josh@jmj-cre.com)

# 74 CONCORD ST & 15 PARK ST - FLOOR PLAN - 2ND FLOOR



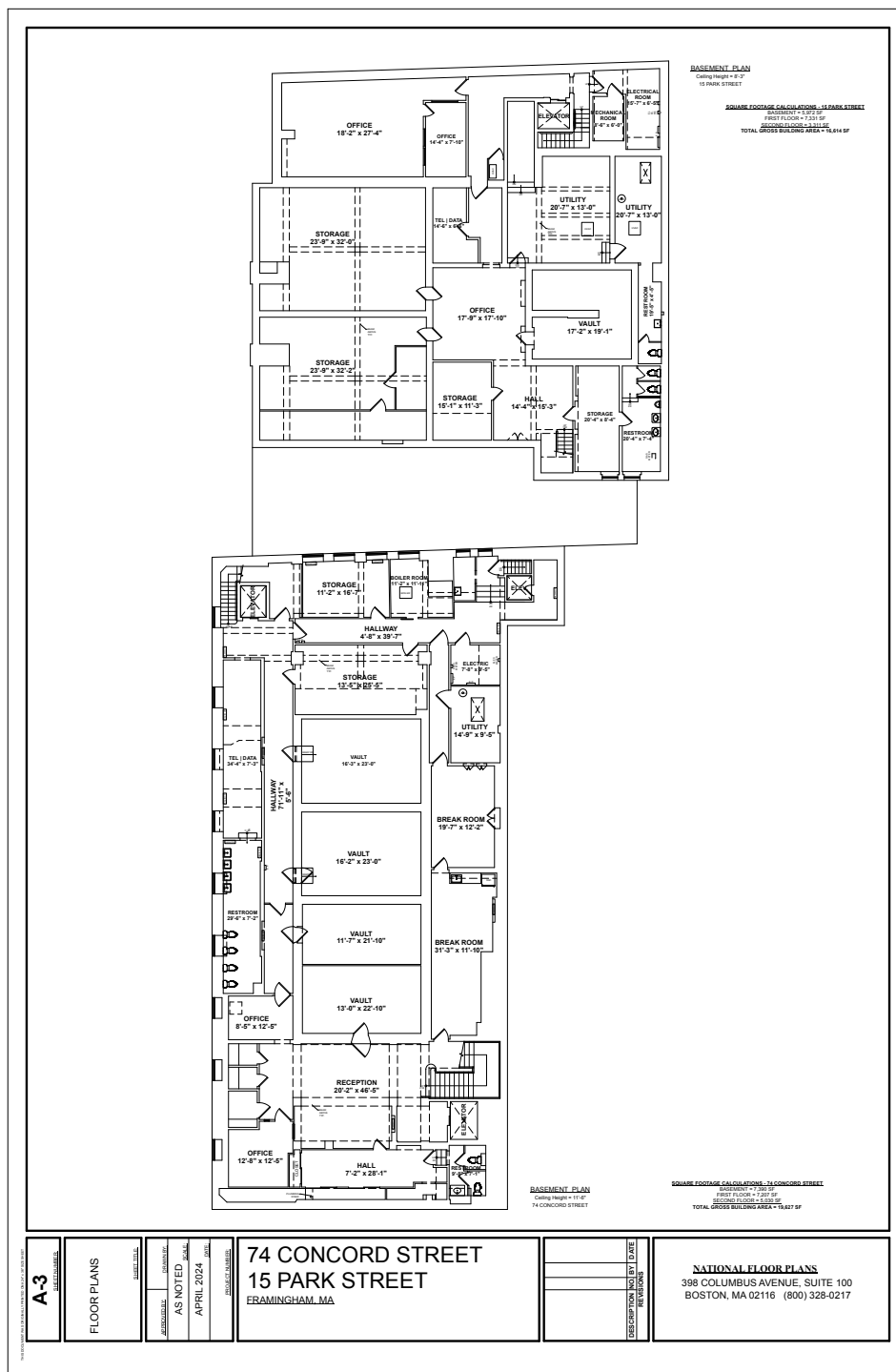
The information contained herein has been obtained through sources deemed reliable by JMJ Commercial Realty, Inc., but cannot be guaranteed for its accuracy. We recommend to the Buyer or Tenant that any information, which is of special interest, should be obtained through independent verification.



**JMJ Commercial Realty**  
 935 Great Plain Avenue #261  
 Needham, MA 02492  
[www.jmj-cre.com](http://www.jmj-cre.com)

**Josh Seadia**  
 Principal  
 617-605-5674  
[josh@jmj-cre.com](mailto:josh@jmj-cre.com)

# 74 CONCORD ST & 15 PARK ST - FLOOR PLAN - LOWER LEVEL



The information contained herein has been obtained through sources deemed reliable by JMJ Commercial Realty, Inc., but cannot be guaranteed for its accuracy. We recommend to the Buyer or Tenant that any information, which is of special interest, should be obtained through independent verification.



**JMJ Commercial Realty**  
 935 Great Plain Avenue #261  
 Needham, MA 02492  
[www.jmj-cre.com](http://www.jmj-cre.com)

**Josh Seadia**  
 Principal  
 617-605-5674  
[josh@jmj-cre.com](mailto:josh@jmj-cre.com)