



# WILLOW CREEK



PRESENTED BY:

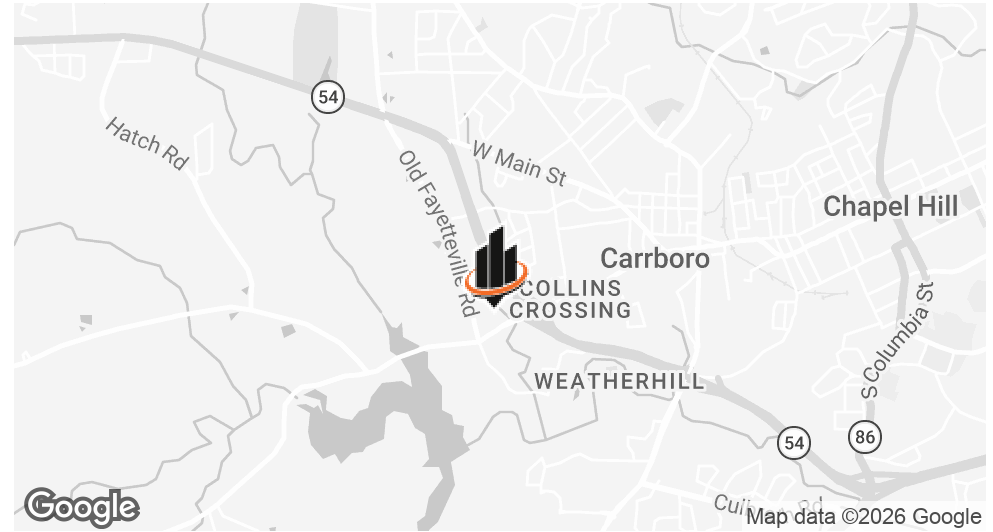


**WHIT BRANNON**

919.287.3219 | [whit.brannon@svn.com](mailto:whit.brannon@svn.com)

OFFICE CONDO FOR SALE  
**610 JONES FERRY ROAD**  
SUITE 205 | CARRBORO, NC 27510

## PROPERTY SUMMARY



### OFFERING SUMMARY

<b>BUILDING SIZE:</b>	±40,895 SF
<b>SUITE 205 SIZE:</b>	±5,030 GSF
<b>YEAR BUILT:</b>	2001
<b>RENOVATED:</b>	2017
<b>ZONING:</b>	Office (O)
<b>ASKING PRICE:</b>	\$675,000 (\$134.19/SF)
<b>VIDEO:</b>	<a href="#">View Here</a>

### PROPERTY OVERVIEW

SVN | REA is pleased to offer for sale this **well-appointed office condominium on the second floor** of Willow Creek Professional Center in Carrboro, NC.

The suite features a functional layout with a **conference room, multiple private offices, open work areas, a break room, private in-suite restroom, and access to shared restrooms**. Additional highlights include ample on-site parking (surface + covered garage), elevator access, and **optional office furniture**.

**With two points of egress, the suite may be subdivided into two smaller units** - an appealing option for investors or owner-users targeting tenants seeking office space under ±3,000 SF.

The property is **conveniently located seconds from NC Hwy 54**, just minutes from Carrboro's restaurants/shops and the UNC-Chapel Hill campus, and less than 25 minutes from Raleigh-Durham International Airport (RDU), Research Triangle Park (RTP), and Duke University.

### WHIT BRANNON

O: 919.287.3219

whit.brannon@svn.com

**WILLOW CREEK PROFESSIONAL CENTER** | 610 Jones Ferry Road, Suite 205 Carrboro, NC 27510



**SUITE PHOTOS**



**WHIT BRANNON**  
O: 919.287.3219  
whit.brannon@svn.com

**WILLOW CREEK PROFESSIONAL CENTER** | 610 Jones Ferry Road, Suite 205 Carrboro, NC 27510



**SUITE PHOTOS**

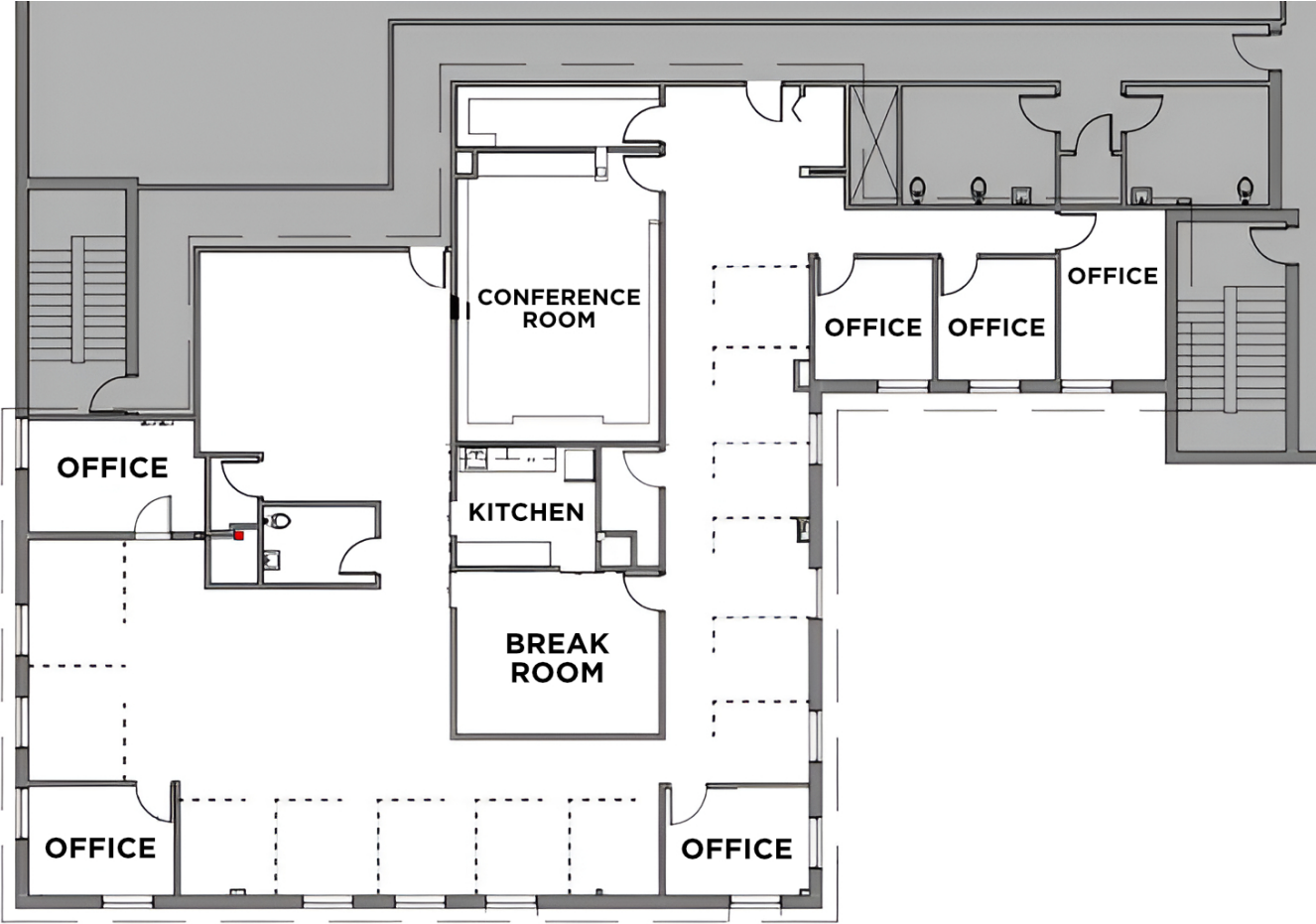


**WHIT BRANNON**  
O: 919.287.3219  
whit.brannon@svn.com

**WILLOW CREEK PROFESSIONAL CENTER** | 610 Jones Ferry Road, Suite 205 Carrboro, NC 27510



**FLOOR PLAN (SUITE 205)**



**WHIT BRANNON**  
O: 919.287.3219  
whit.brannon@svn.com

**WILLOW CREEK PROFESSIONAL CENTER** | 610 Jones Ferry Road, Suite 205 Carrboro, NC 27510



## THE RESEARCH TRIANGLE

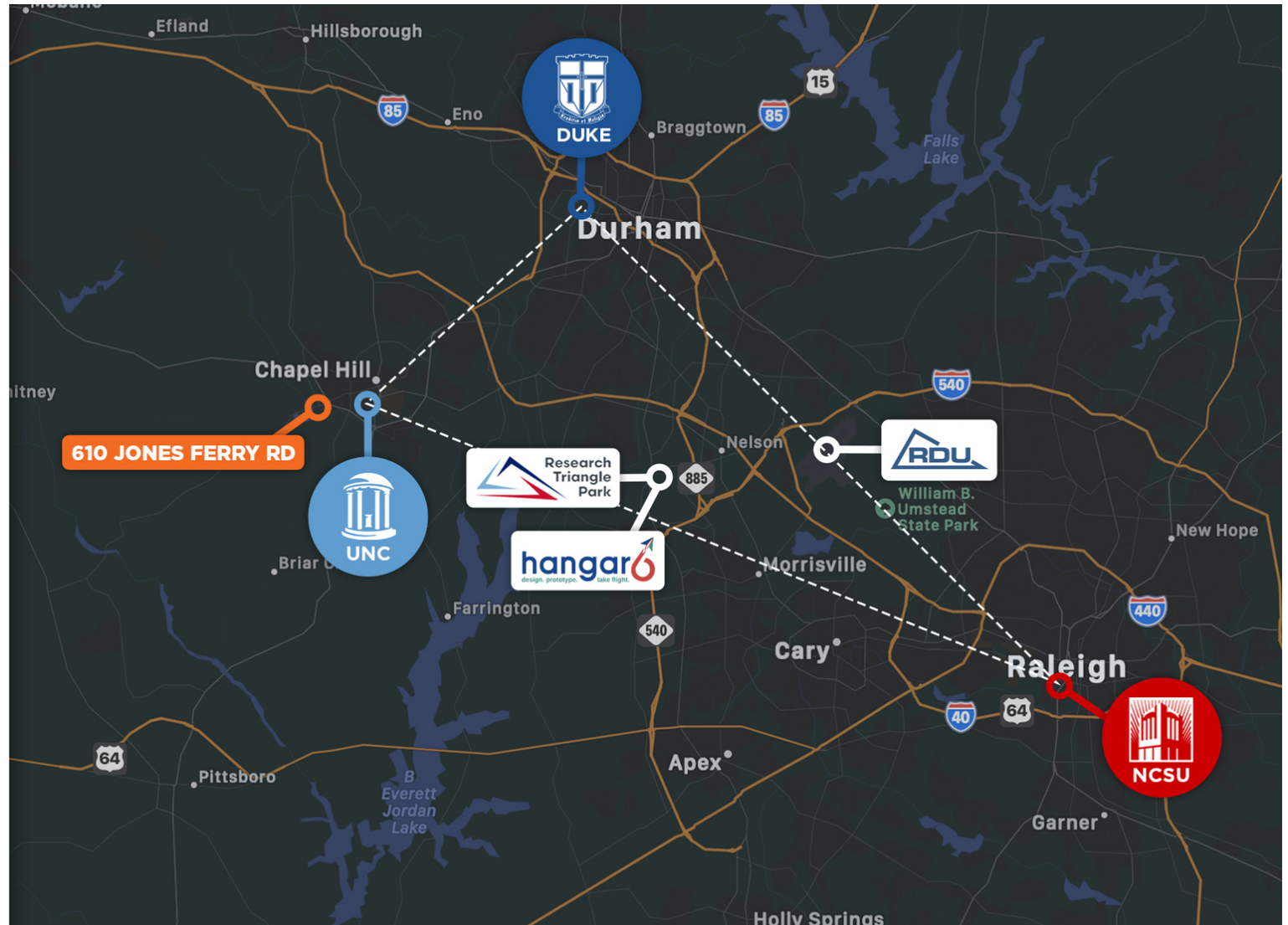
The **Research Triangle** is a nationally recognized region anchored by three Tier-1 research universities:

**UNC-Chapel Hill, Duke University, and NC State.**

Together, they drive innovation, attract top talent, and support a thriving economy in life sciences, technology, healthcare, and beyond.

At the center of the region is **Research Triangle Park (RTP)**, one of the largest research parks in the world with 300+ companies spanning biotech, IT, and advanced manufacturing.

The synergy between RTP and the universities **has made the Triangle a global destination for research, business, and quality of life** - consistently ranked among the top regions in the U.S. for growth and opportunity.



**WHIT BRANNON**

O: 919.287.3219

whit.brannon@svn.com

**WILLOW CREEK PROFESSIONAL CENTER** | 610 Jones Ferry Road, Suite 205 Carrboro, NC 27510

**SVN**  
REAL ESTATE ASSOCIATES

# PROXIMITY OVERVIEW



**WHIT BRANNON**  
O: 919.287.3219  
whit.brannon@svn.com

**WILLOW CREEK PROFESSIONAL CENTER** | 610 Jones Ferry Road, Suite 205 Carrboro, NC 27510



# NEARBY RETAILERS



**WHIT BRANNON**

O: 919.287.3219

whit.brannon@svn.com

**WILLOW CREEK PROFESSIONAL CENTER** | 610 Jones Ferry Road, Suite 205 Carrboro, NC 27510





Local Expertise.  
National Reach.

SVN | Real Estate Associates

3333 Durham-Chapel Hill Blvd, Suite C | Durham, NC 27707