

For Lease

7,000 SF and / or 3 Acres
Industrial Space



We obtained the information above from sources we believe to be reliable. However, we have not verified its accuracy and make no guarantee, warranty or representation about it. It is submitted subject to the possibility of errors, omissions, change of price, rental or other conditions, prior sale, lease or financing, or withdrawal without notice. We include projections, opinions, assumptions or estimates for example only, and they may not represent current or future performance of the property. You and your tax and legal advisors should conduct your own investigation of the property and transaction.

410 Executive Park
Asheville, NC 28801
828 210 3940 tel
naibeverly-hanks.com



1989 Old Rosman Highway

Brevard, North Carolina 28712

Property Overview

A highly flexible combination of office and warehouse with an additional opportunity to lease 3 acres of flat land ideal for a laydown yard, parking, or other storage. The bright and open office portion totals 4000sf and offers a variety of private offices as well as a break room with kitchenette, conference room, and other large open spaces ideal for a variety of uses. Additionally, the space comes with 3000sf of warehouse with access to two shared dock doors. The 3 acres of land adjacent to the spaces are available for an additional \$1500 per month. This is an opportunity for a wide variety of users all at a very affordable lease rate.

Offering Summary

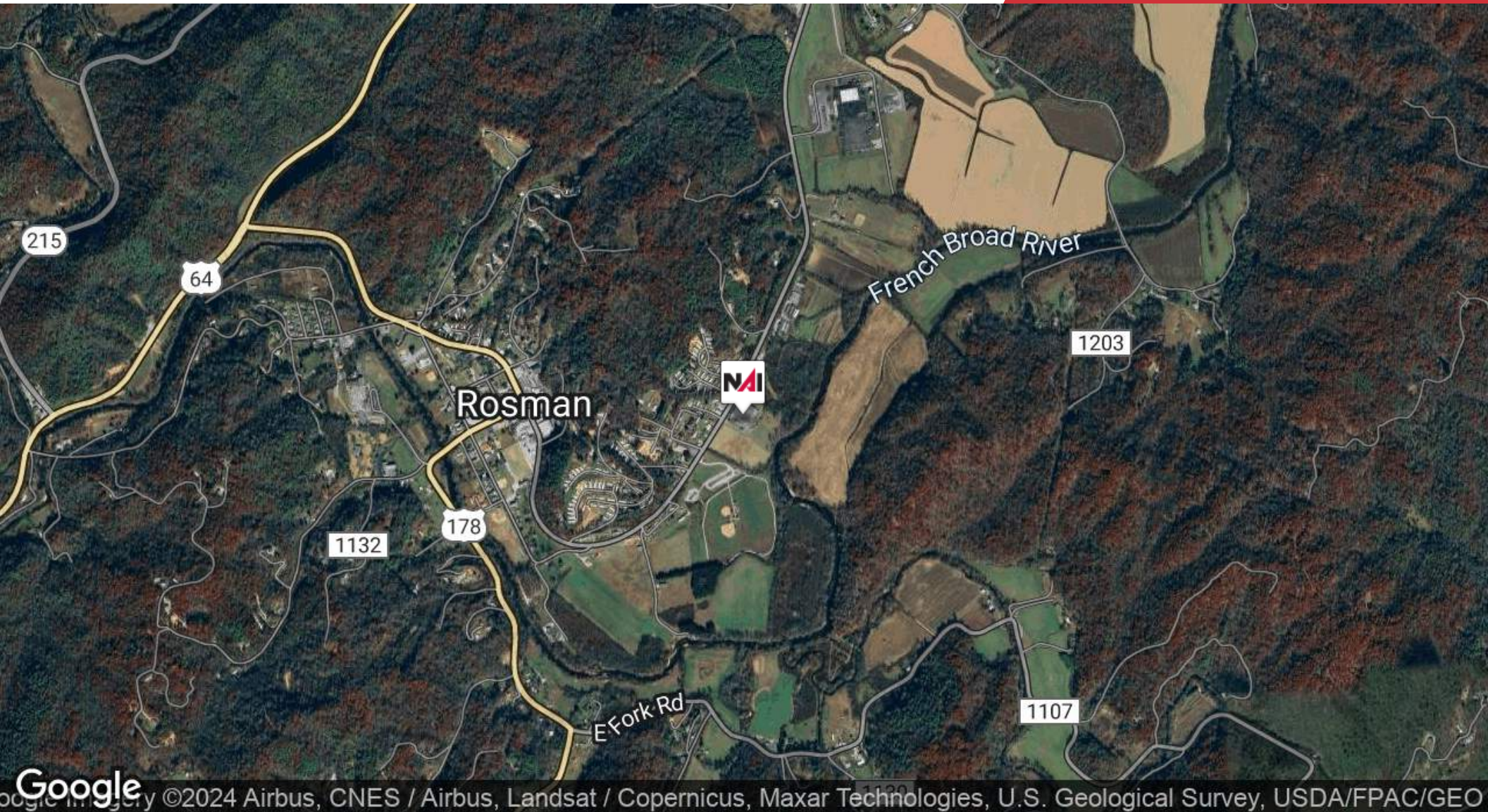
Building Lease Rate:	\$7.50 SF/yr (NNN)
Building Size:	7,000 SF
Land Lease Rate:	\$1500/Month (NNN)
Lot Size:	+3 Acres
Available:	Immediately

For More Information

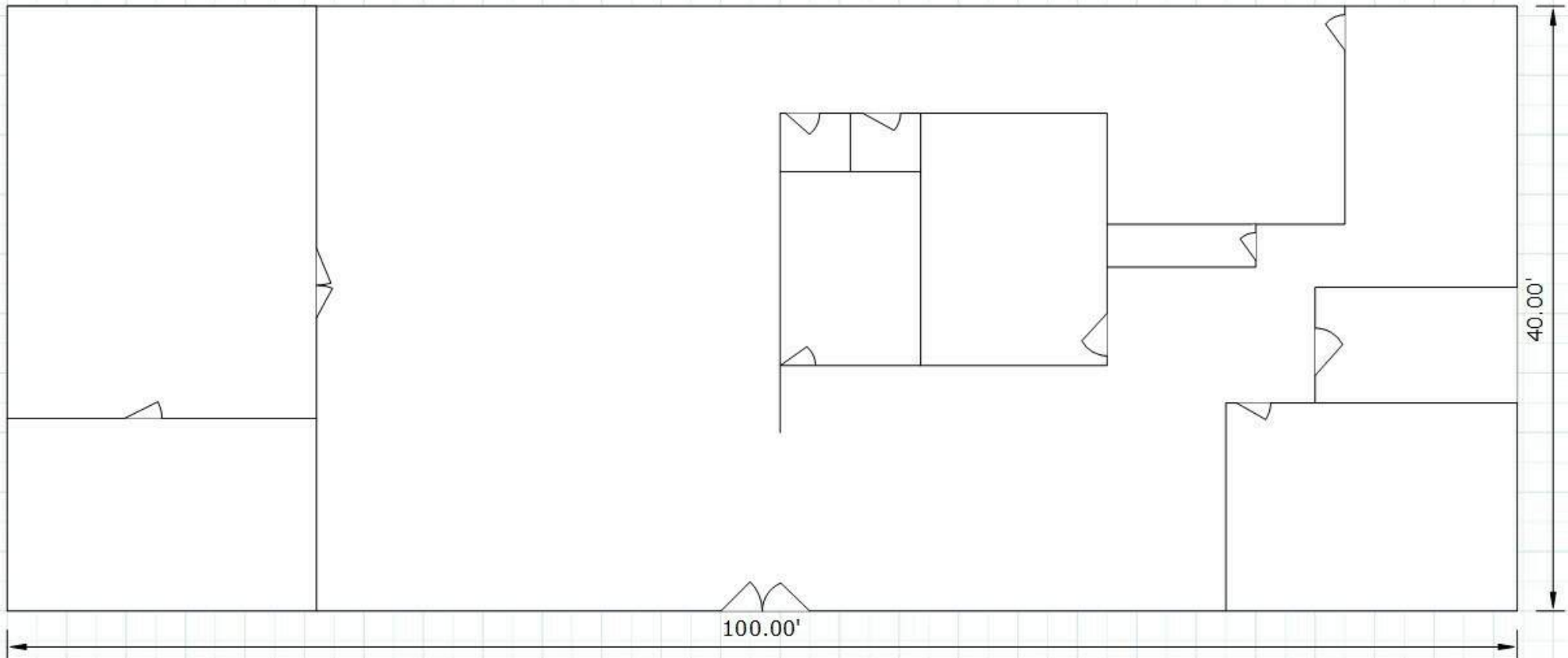
Jim Davis

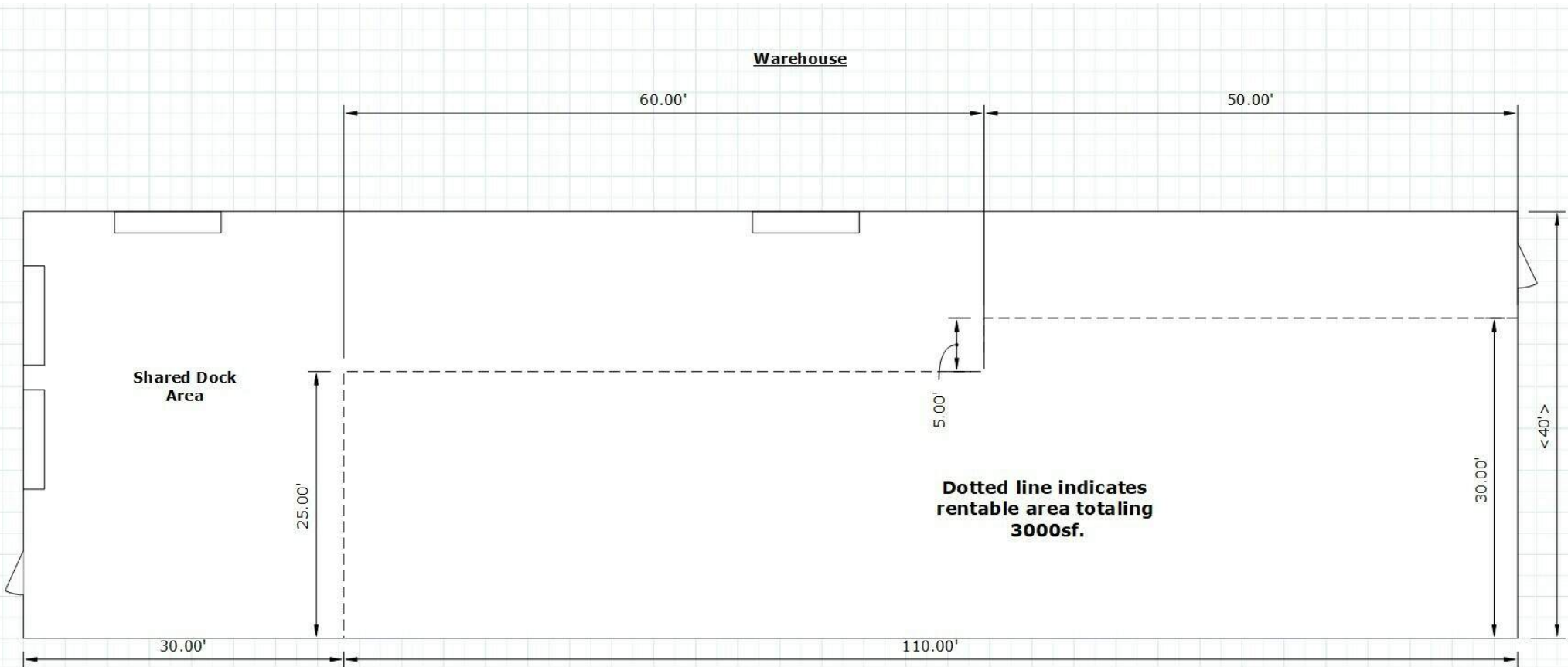
O: 330 718 3311

jdavis@naibevery-hanks.com | NC #292479



Office











Additional Land For Lease
3 Acres | \$1500 Montly (NNN)
Owner willing to consider a build to suit!





Jim Davis - Commercial Broker

NAI Beverly-Hanks | Broad River Capital

Member Associate, Society Of Industrial and Office Realtors

North Carolina Economic Development Association Member

Phone: 330-718-3311

Email: JDavis@NAIBeverly-Hanks.com

