

FOR SUBLEASE

13450 N Meridian St.
Carmel, IN 46302



LIMITED TIME: 5% COMMISSION FOR TENANT BROKERS ON 5+ YR SUBLEASES SIGNED BEFORE JULY 1

PROPERTY DETAILS



- 1,945 RSF Available for Sublease
- Current lease expires January 2035



- Connected to Ascension St. Vincent Women's Center



- Excellent location with easy access to US 31



- Immediate access to Old Meridian Street



- Complimentary valet parking



- 5% Commission for tenant broker for any sublease term 5+ years signed before July 1st



Schedule a Tour Today!

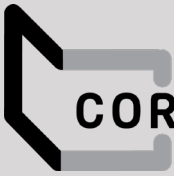


CONTACT

Quinn Peterson
Associate, Brokerage
952.905.1519
qpeterson@cciin.com

Ben Cohen
VP, Brokerage
317.696.3255
bcohen@cciin.com

HQ: Cornerstone Companies, Inc.
8902 N Meridian Street, Suite 205
Indianapolis, IN | 317.841.9900
cornerstonecompaniesinc.com



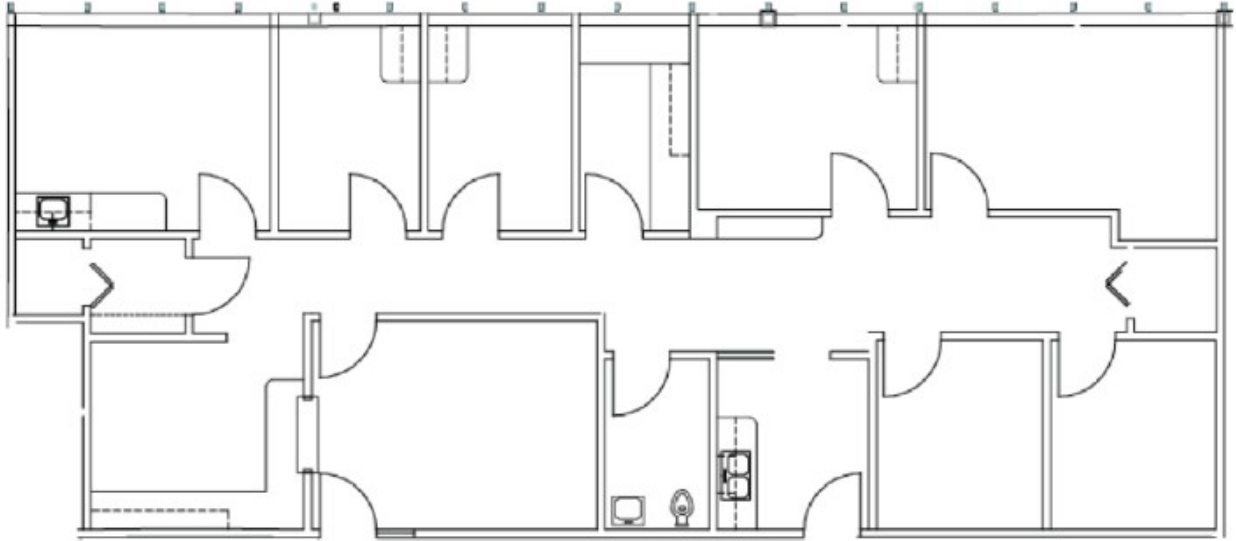
CORNERSTONE

FLOOR PLAN

13450 N Meridian St.
Carmel, IN 46302



Move-In Ready Suite | Suite 244 - 1,954 SF



AMENITIES MAP







13450 NORTH MERIDIAN ST.


DEMOGRAPHICS (5 - mile radius)

 165,170
Population

 39.4
Median Age

 63,548
Households

 \$106,246
Median House-
hold Income

 \$140,485
Average Household Income



CONTACT

Ben Cohen
VP, Brokerage
317.696.3255
bcohen@cciin.com

Quinn Peterson
Associate, Brokerage
952.905.1519
qpeterson@cciin.com



Cornerstone Companies, Inc.
8902 N Meridian Street, Suite 205
Indianapolis, IN 46260

