

# OAKLEY TOWN CENTER

ANCHOR POSITION - NOW LEASING!  
2555 MAIN STREET, OAKLEY, CA



*Owned By:*



**Christopher Sill**  
BRE#01188616  
csill@lee-associates.com  
D 209.983.6837

# OAKLEY TOWN CENTER

## NOW LEASING!

AVAILABLE SPACE: 31,450± SF

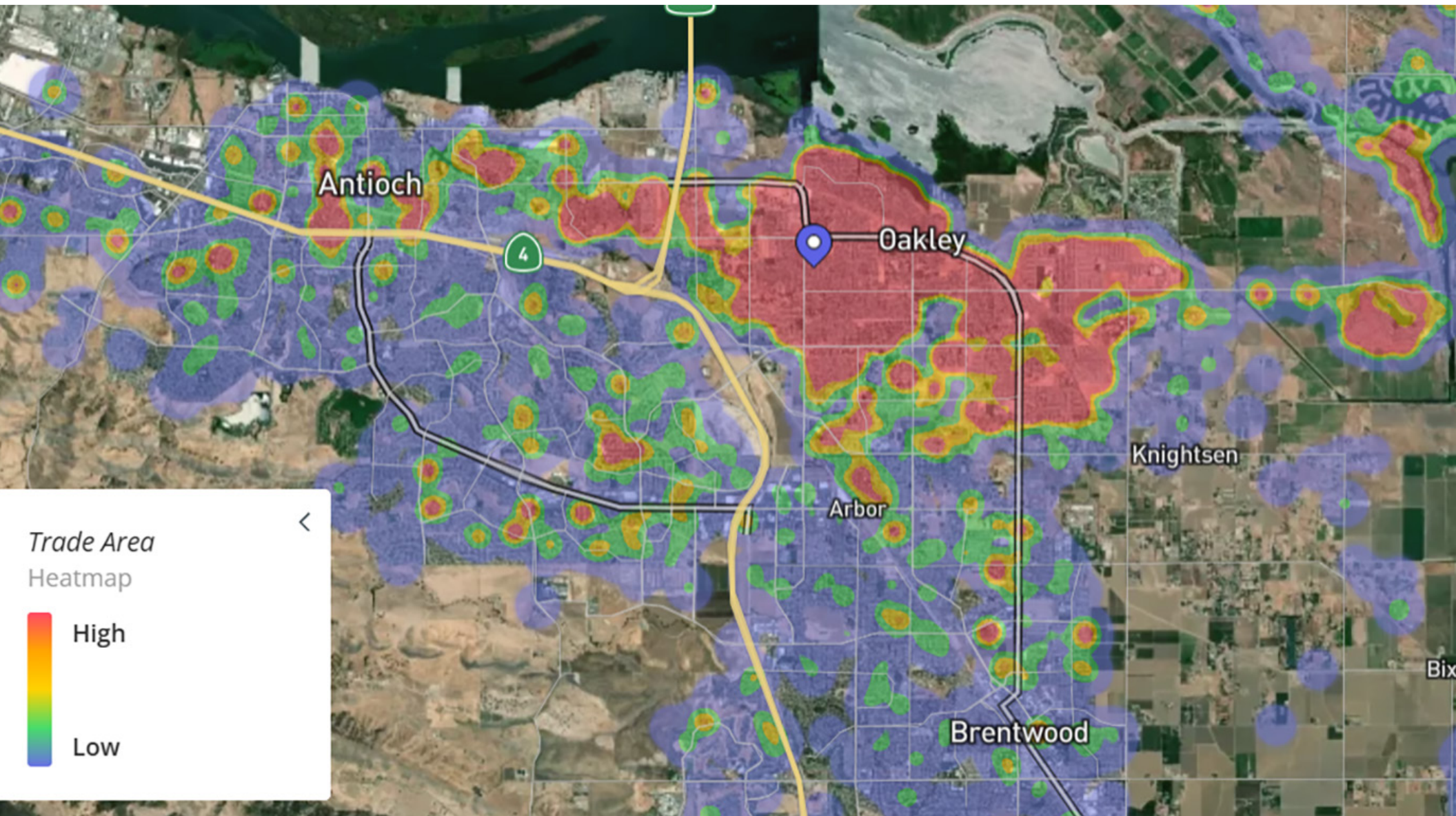
- Prime Anchor position in dominant neighborhood center
- Ample signage including monument sign position
- Recessed loading dock for easy product loading

Oakley Town Center is an established Neighborhood Shopping Center located in the heart of the high growth residential market of Oakley, California. The shopping center is located at the primary intersection of Main Street and Empire Avenue and is anchored by a successful Lucky Supermarket. The project sees approximately 1.5 million customer visits per year and as well located to service the community. We are offering one of the sole anchor positions currently available in the entire Oakley trade area, formerly occupied by Rite Aid.





# TRADE AREA MAP



All information furnished regarding property for sale, rental or financing is from sources deemed reliable, but no warranty or representation is made to the accuracy thereof and same is submitted to errors, omissions, change of price, rental or other conditions prior to sale, lease or financing or withdrawal without notice. No liability of any kind is to be imposed on the broker herein.





AVAILABLE  
31,450± SF

Lucky

CHASE

EMPIRE AVENUE

Great Clips

Auto  
Zone

BURGER  
KING

MAIN STREET

Owned By:



Christopher Sill

BRE#01188616

csill@lee-associates.com

D 209.983.6837





# AREA MAP

