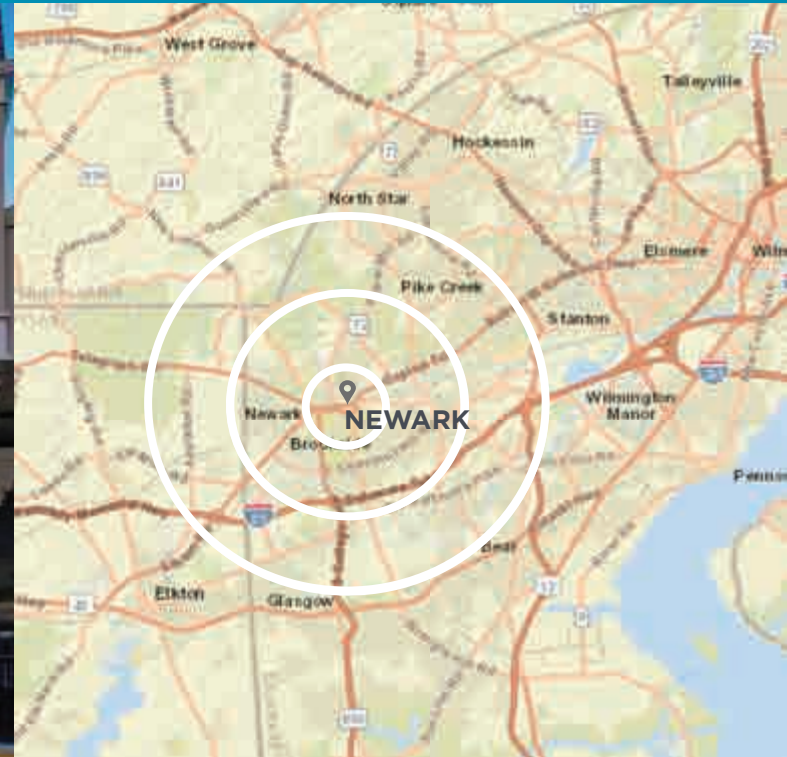


# NEWARK SHOPPING CENTER

230 E MAIN STREET  
NEWARK, DELAWARE 19711



JOIN  
RETAILERS:



### PROPERTY HIGHLIGHTS

- ▶ 1,200 SF - 10,000 SF spaces available for lease
- ▶ Very close proximity to University of Delaware (23,000+ students)
- ▶ Excellent access and visibility
- ▶ Over 21,000 ADT on East Main St & Cleveland Ave

### DEMOGRAPHICS

	1 MILE	3 MILE	5 MILE
POPULATION:	14,910	63,077	143,350
AVERAGE HH INC:	\$94,460	\$119,164	\$127,961
# OF EMPLOYEES:	10,208	33,589	82,335



CONTACT |

Michael Stoltz

☎ 410.308.6384

✉ [mstoltz@mfirealty.com](mailto:mstoltz@mfirealty.com)

Michael Kociemba

☎ 443.240.4940

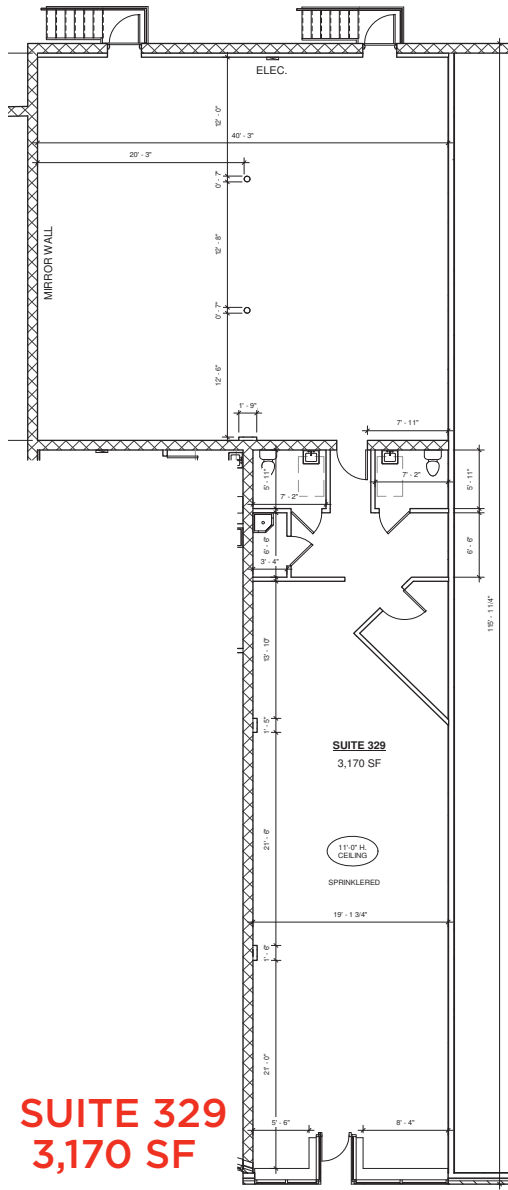
✉ [mk@mfirealty.com](mailto:mk@mfirealty.com)



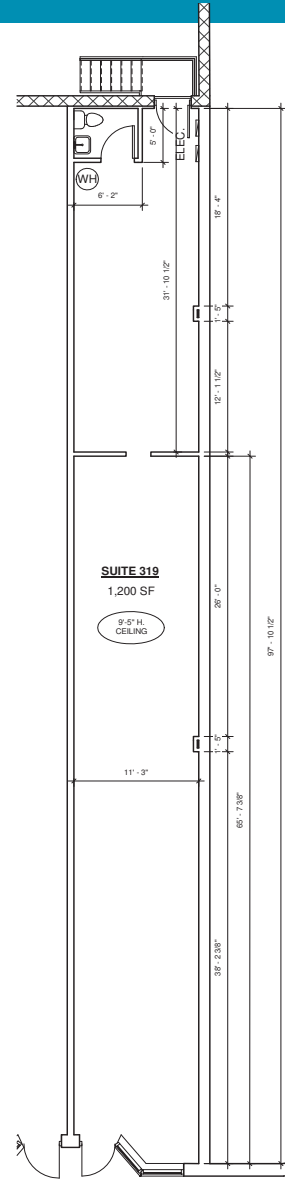


- 1 Enterprise Rent-A-Car
- 2 Main Street Movies
- 3 Stretch Zone
- 4 Available 3,160 SF
- 5 Fresenius Medical Care
- 6 Newark Bike Shop
- 7 Salon by Anthony
- 8 Available 1,200 SF
- 9 Goodwill
- 10 Newark Discount Liquor
- 11 Qualitea
- 12 Capriotti's
- 13 Dollar Tree
- 14 Newark Natural Foods
- 15 Kung Fu Hot Pot
- 16 Asian BBQ
- 17 Available 11,000 SF
- 18 Available 8,000 SF
- 19 PNC Bank
- 20 Love Nails
- 21 T-Mobile
- 22 Wing Stop
- 23 Orangetheory
- 24 Simon Eye Associates
- 25 Available 1,488 SF
- 26 Chase Bank
- 27 Rita's
- 28 Metro PCS
- 29 U.S. Armed Forces
- 30 No. 1 Chinese Restaurant
- 31 Vegan Restaurant
- 32 Poke Bros.
- 33 Pho Ever
- 34 Zahra
- 35 Tropical Smoothie Cafe
- 36 Long Bao Express
- 37 Big Z Pizza

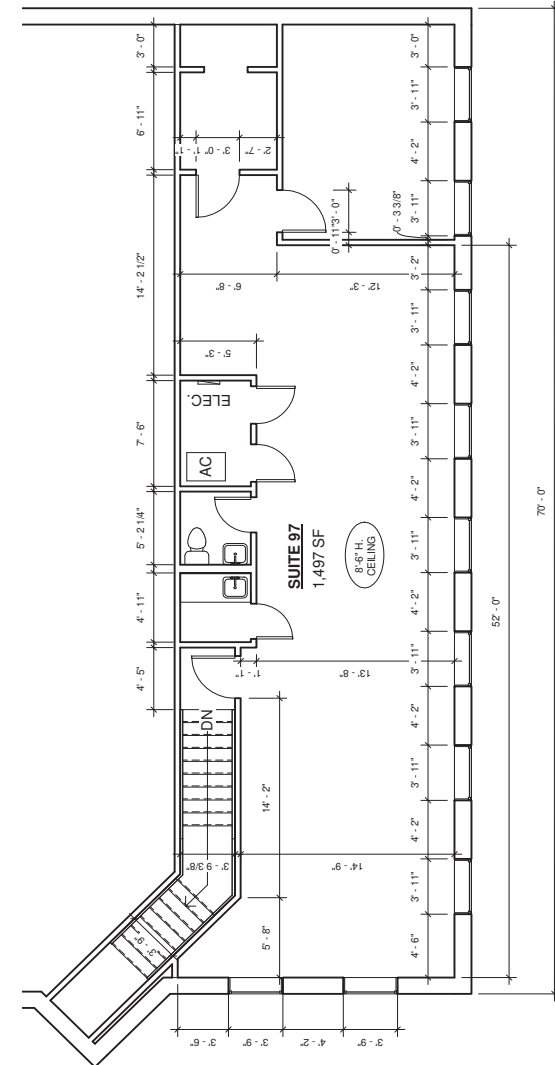




**SUITE 329**  
**3,170 SF**

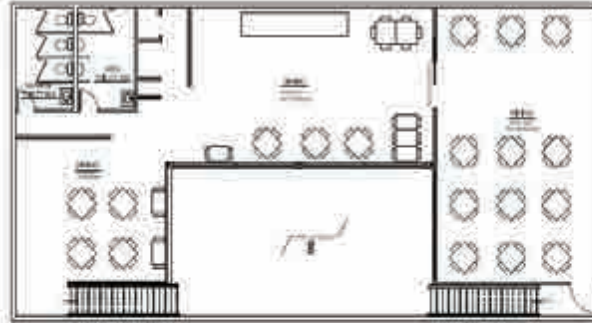


**SUITE 319**  
**1,200 SF**

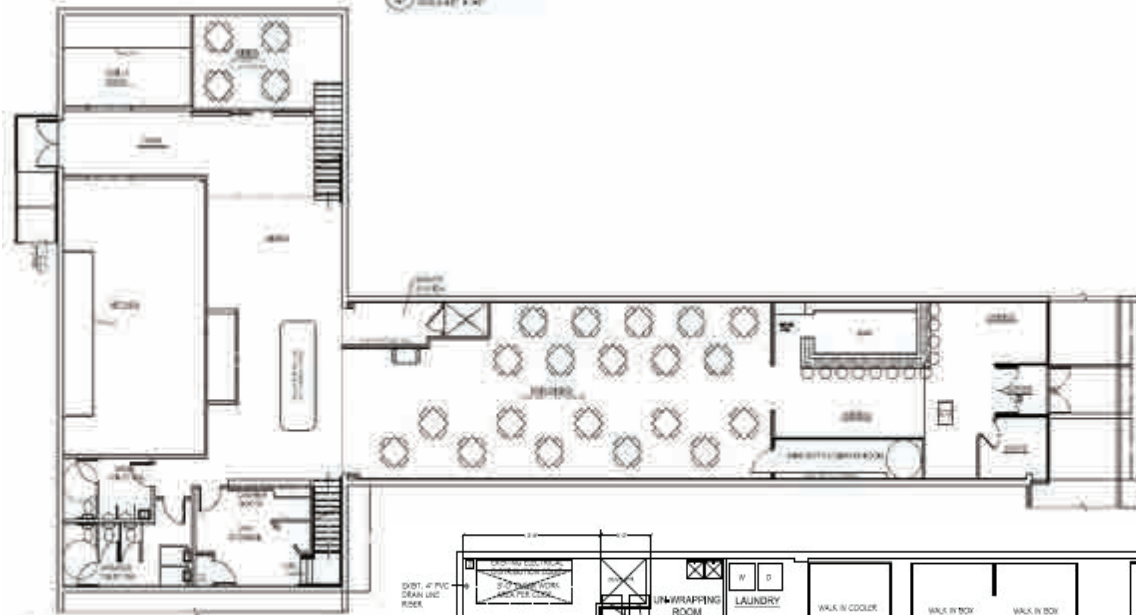


**SUITE 97**  
**1,488 SF**

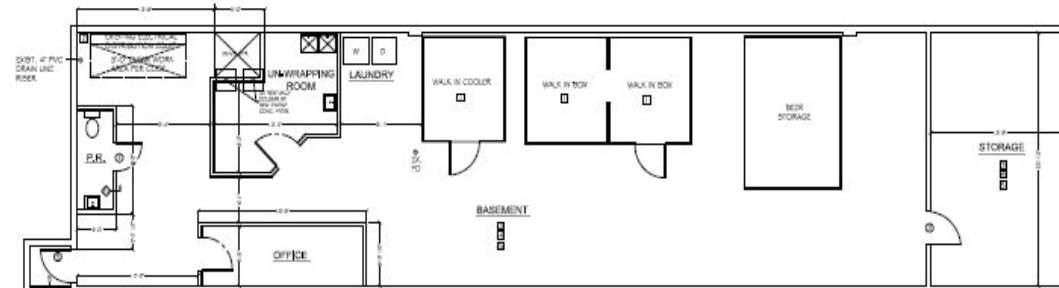
90' SQUARE MEZZ IN CHASES + 271' OF 48'  
EXIST' RESTROOM WALLS (2 CHASES) + 271' OF 7'



**2ND FLOOR PLAN**  
SCALE = 1/4" = 1'-0"



**GROUND FLOOR PLAN**  
SCALE = 1/4" = 1'-0"



- GENERAL NOTES**
- REPLACE FLOOR IN COOLER
  - EXISTING ELECTRICAL DISTRIBUTION EQUIPMENT TO REMAIN
  - NO CEILING IN BASEMENT, TO REMAIN OPEN TO STEEL FRAME ABOVE
  - EXISTING LIGHT FIXTURES TO BE REUSED, REPLACE BULBS
  - EXISTING CONC. FLOOR TO BE PAINTED WITH AN EPOXY FLOOR PAINT
- STRUCTURAL NOTES**
- EX-4 EXISTING FLOOR DEAN TO REMAIN
  - EX-10
- BASEMENT PLAN**  
SCALE = 1/4" = 1'-0"

**SUITE 211B**  
**5,804 SF- 1st FL**  
**2,400 SF- MEZZ**  
**2,400 SF- LL**



