



AVAILABLE

7120 Highway 300
Little Rock, Arkansas

Lease Rate:

\$3,125
Month

CONTACT US

Clark Irwin, CCIM, SIOR
+1 501 978 6588
clark.irwin@ar.colliers.com

Graham Gordon
+1 501 978 6503
graham.gordon@ar.colliers.com

Colliers | Arkansas
1 Allied Drive, Suite 1500
Little Rock, AR 72202
P: +1 501 372 6161
F: +1 501 372 0671

Newly Constructed Flex/Office Building

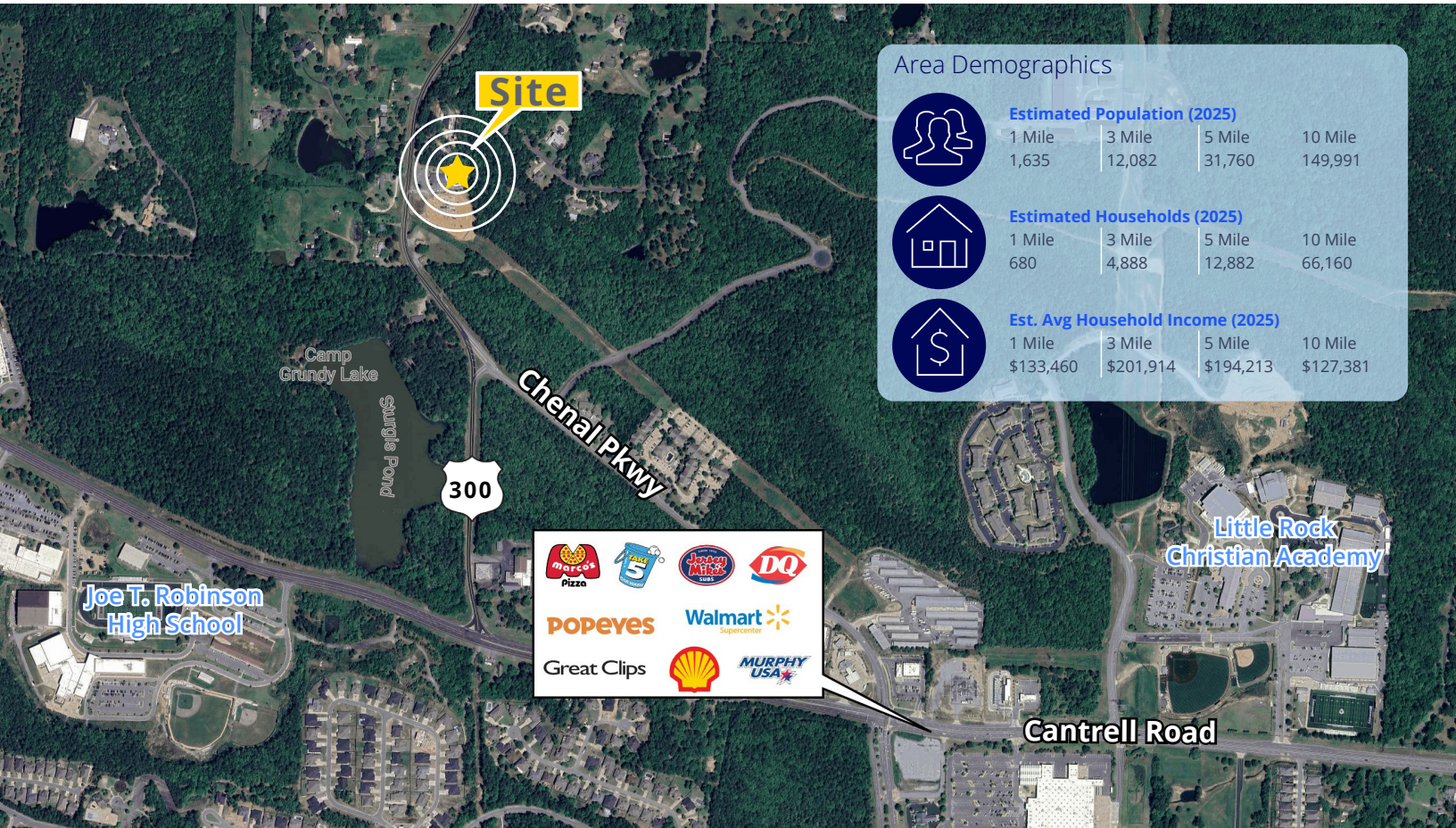
Features

- Lot size: 1.92 acres
- Total building size: 10,000 SF
- Available: 2,500 SF suite
- Lease rate: \$3,125/month
- Tenant responsible for utilities
- Built: 2025
- Drive-in door
- Traffic count: approximately 9,000 vehicles per day along Cantrell Road and 5,000 vehicles per day along Highway 300

This document/email has been prepared by Colliers for advertising and general information only. Colliers makes no guarantees, representations or warranties of any kind, expressed or implied, regarding the information including, but not limited to, warranties of content, accuracy and reliability. Any interested party should undertake their own inquiries as to the accuracy of the information. Colliers excludes unequivocally all inferred or implied terms, conditions and warranties arising out of this document and excludes all liability for loss and damages arising therefrom. This publication is the copyrighted property of Colliers and /or its licensor(s). © 2025. All rights reserved. This communication is not intended to cause or induce breach of an existing listing agreement. Colliers International Group Inc.

FOR LEASE

Neighborhood Map



Area Demographics



Estimated Population (2025)

1 Mile	3 Mile	5 Mile	10 Mile
1,635	12,082	31,760	149,991



Estimated Households (2025)

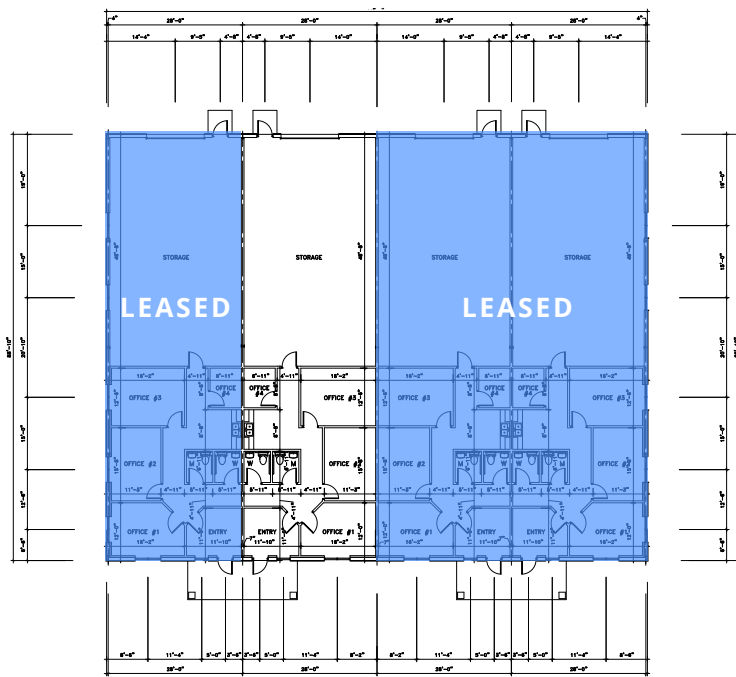
1 Mile	3 Mile	5 Mile	10 Mile
680	4,888	12,882	66,160



Est. Avg Household Income (2025)

1 Mile	3 Mile	5 Mile	10 Mile
\$133,460	\$201,914	\$194,213	\$127,381

Floor Plan



CONTACT US

Clark Irwin, CCIM, SIOR

+1 501 978 6588

clark.irwin@ar.colliers.com

Graham Gordon

+1 501 978 6503

graham.gordon@ar.colliers.com

Colliers | Arkansas

1 Allied Drive, Suite 1500

Little Rock, AR 72202

P: +1 501 372 6161

F: +1 501 372 0671

This document/email has been prepared by Colliers for advertising and general information only. Colliers makes no guarantees, representations or warranties of any kind, expressed or implied, regarding the information including, but not limited to, warranties of content, accuracy and reliability. Any interested party should undertake their own inquiries as to the accuracy of the information. Colliers excludes unequivocally all inferred or implied terms, conditions and warranties arising out of this document and excludes all liability for loss and damages arising there from. This publication is the copyrighted property of Colliers and /or its licensor(s). © 2025. All rights reserved. This communication is not intended to cause or induce breach of an existing listing agreement. Colliers International Group Inc.

FOR LEASE

Property Photos



CONTACT US

Clark Irwin, CCIM, SIOR
+1 501 978 6588
clark.irwin@ar.colliers.com

Graham Gordon
+1 501 978 6503
graham.gordon@ar.colliers.com

Colliers | Arkansas
1 Allied Drive, Suite 1500
Little Rock, AR 72202
P: +1 501 372 6161
F: +1 501 372 0671

This document/email has been prepared by Colliers for advertising and general information only. Colliers makes no guarantees, representations or warranties of any kind, expressed or implied, regarding the information including, but not limited to, warranties of content, accuracy and reliability. Any interested party should undertake their own inquiries as to the accuracy of the information. Colliers excludes unequivocally all inferred or implied terms, conditions and warranties arising out of this document and excludes all liability for loss and damages arising there from. This publication is the copyrighted property of Colliers and /or its licensor(s). © 2025. All rights reserved. This communication is not intended to cause or induce breach of an existing listing agreement. Colliers International Group Inc.