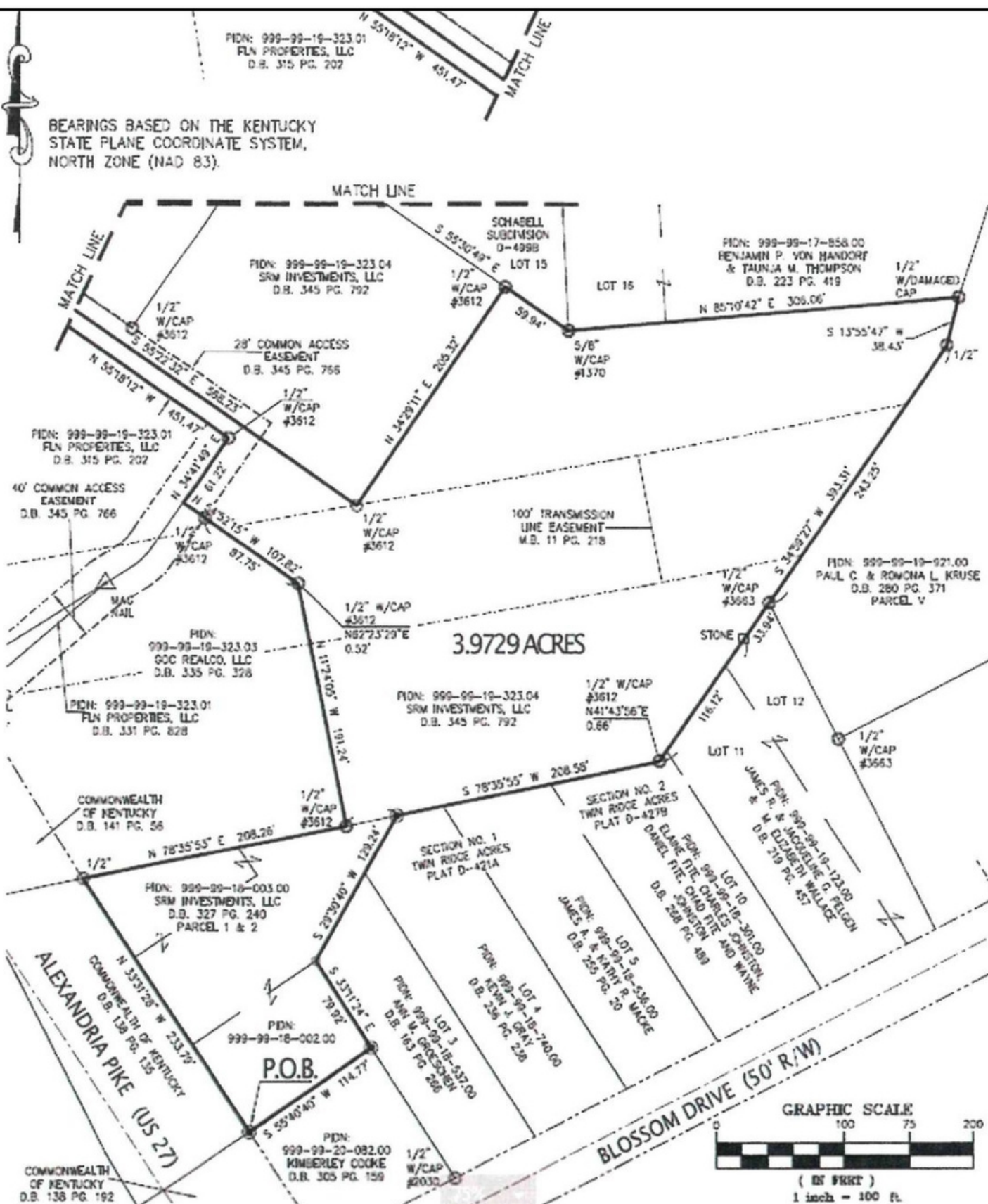


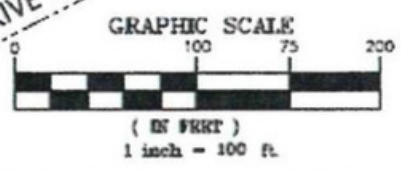


FIDN: 999-99-19-323.01  
FLN PROPERTIES, LLC  
D.B. 315 PG. 202

BEARINGS BASED ON THE KENTUCKY  
STATE PLANE COORDINATE SYSTEM,  
NORTH ZONE (NAD 83).



3.9729 ACRES



ALEXANDRIA PIKE (US 27)

COMMONWEALTH OF KENTUCKY  
D.B. 136 PG. 135

COMMONWEALTH OF KENTUCKY  
D.B. 138 PG. 192

BLOSSOM DRIVE (50' R/W)

MATCH LINE

SCHABELL SUBDIVISION  
D-499B

FIDN: 999-99-19-323.04  
SRM INVESTMENTS, LLC  
D.B. 345 PG. 792

LOT 15

LOT 16

FIDN: 999-99-17-858.00  
BENJAMIN P. VON HANDORF  
& TAUNJA M. THOMPSON  
D.B. 223 PG. 419

1/2" W/DAMAGED CAP

28' COMMON ACCESS EASEMENT  
D.B. 345 PG. 766

100' TRANSMISSION LINE EASEMENT  
M.B. 11 PG. 218

STONE

FIDN: 999-99-19-921.00  
PAUL C. & ROMONA L. KRUSE  
D.B. 280 PG. 371  
PARCEL V

LOT 12

LOT 11

SECTION NO. 2  
TWIN RIDGE ACRES  
PLAT D-427B

ELANE DITZ, CHARLES OWENSON,  
DANIEL FITE, CHAD FITE AND WAIN  
D.B. 268 PG. 489

LOT 10  
LOT 10-10-121.00  
FIDN: 999-99-19-121.00  
JAMES R. & JACQUELINE C. PELZGEN  
D.B. 219 PG. 457

SECTION NO. 1  
TWIN RIDGE ACRES  
PLAT D-421A

LOT 5  
LOT 5-5-536.00  
FIDN: 999-99-18-536.00  
JAMES A. & KATHI R. WAKE  
D.B. 265 PG. 50

LOT 4  
LOT 4-4-740.00  
FIDN: 999-99-18-740.00  
KEVIN J. GRAY  
D.B. 256 PG. 236

LOT 3  
LOT 3-3-337.00  
FIDN: 999-99-18-337.00  
DAVID W. GROESBECH  
D.B. 163 PG. 286

COMMONWEALTH OF KENTUCKY  
D.B. 141 PG. 56

FIDN: 999-99-18-003.00  
SRM INVESTMENTS, LLC  
D.B. 327 PG. 240  
PARCEL 1 & 2

FIDN: 999-99-18-002.00  
D.B. 163 PG. 286

P.O.B.

FIDN: 999-99-20-082.00  
KIMBERLEY COOKE  
D.B. 305 PG. 159

40' COMMON ACCESS EASEMENT  
D.B. 345 PG. 766

MAG RAIL

FIDN: 999-99-19-323.03  
GOC REALCO, LLC  
D.B. 335 PG. 378

FIDN: 999-99-19-323.01  
FLN PROPERTIES, LLC  
D.B. 331 PG. 828

