



FOR LEASE DOWNTOWN MEDICAL AND OFFICE PROFESSIONAL BUILDING



**800 H
202 STREET**
BAKERSFIELD, CA 93301



PROPERTY HIGHLIGHTS

- 90% Occupied
- Located Adjacent to Adventist Health Hospital
- Located near other major hospitals
- Under New Ownership and Management
- Private Parking Lot
- Approximately ±11,500 SF
- Multi-Tenant Building
- 19 Private Parking Spaces and Ample
- Public Street Parking

AVAILABLE SUITES

- Suite G - approx 1,428 sq. ft.
- Asking Rent: ~~\$1.40~~ **\$1.35/SF** Modified Gross

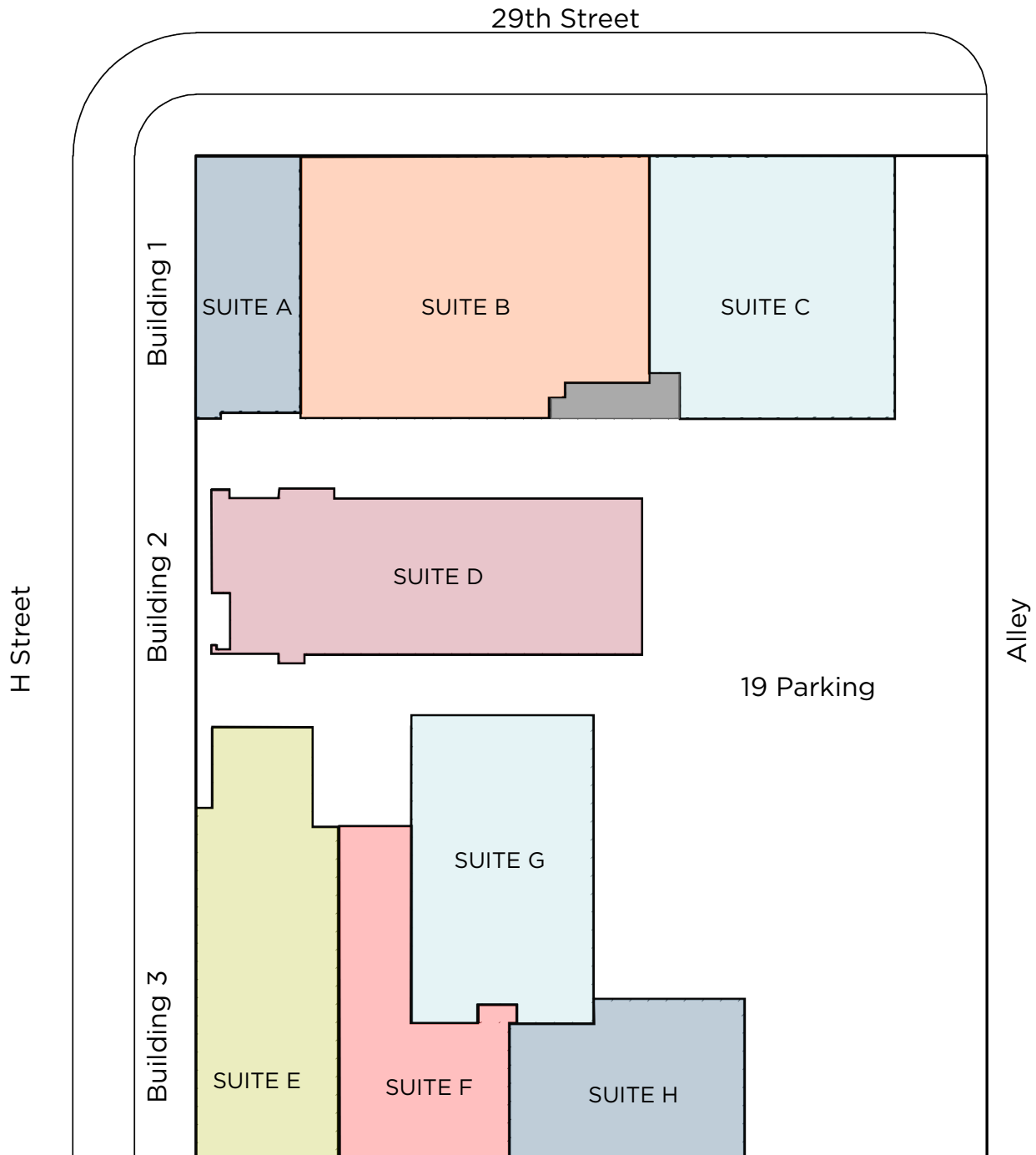
Scott Salters
Senior Director
+1 661 204 6725
scott.salters@cushwake.com
LIC. 02068579

Kristin Frickel
Associate
+1 661 912 6005
kristin.frickel@cushwake.com
LIC. 02249947

5060 California Avenue
Suite 1000
Bakersfield, CA 93309
Main +1 661 327 2263
Fax +1 661 633 3801
cushmanwakefield.com

SITE PLAN

2828 H Street



Scott Salters

Senior Director
+1 661 204 6725
scott.salters@cushwake.com
LIC. 02068579

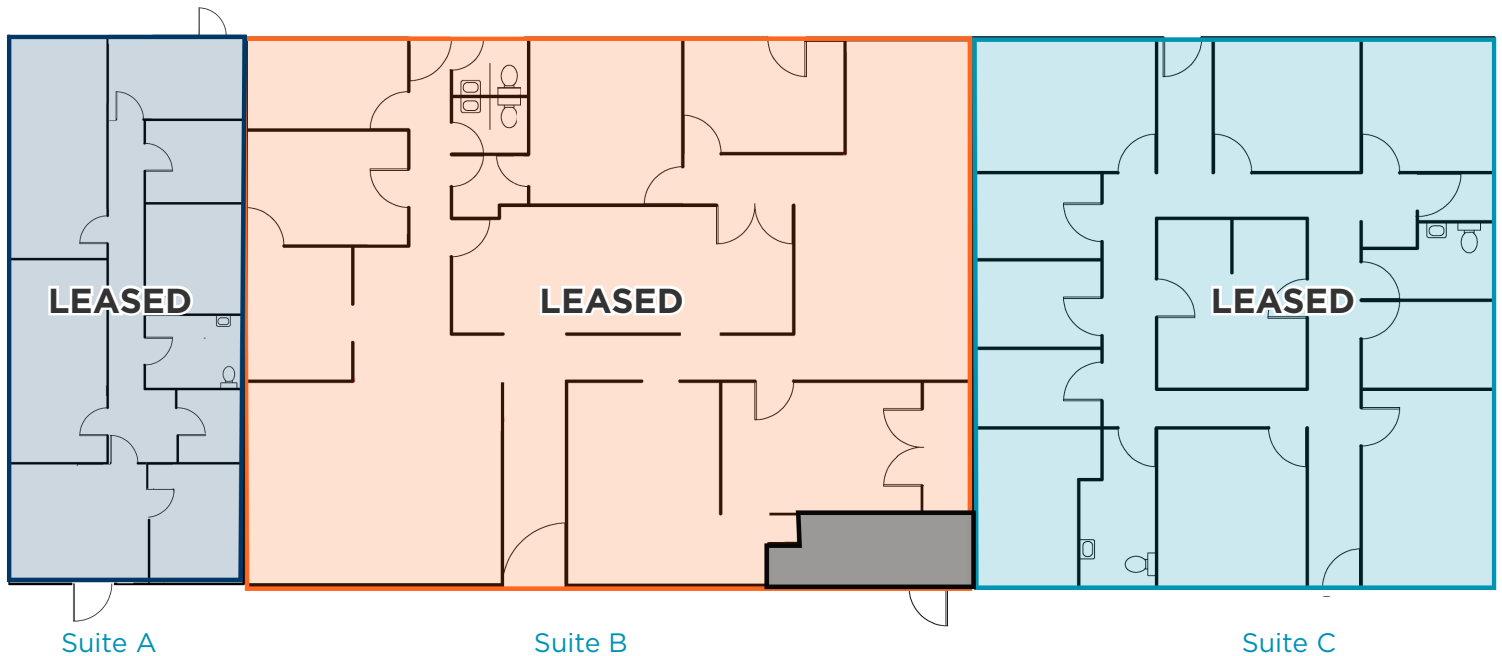
Kristin Frickel

Associate
+1 661 912 6005
kristin.frickel@cushwake.com
LIC. 02249947

5060 California Avenue
Suite 1000
Bakersfield, CA 93309
Main +1 661 327 2263
Fax +1 661 633 3801
cushmanwakefield.com

FLOOR PLAN

2828 H Street - Building 1



Scott Salters

Senior Director
+1 661 204 6725
scott.salters@cushwake.com
LIC. 02068579

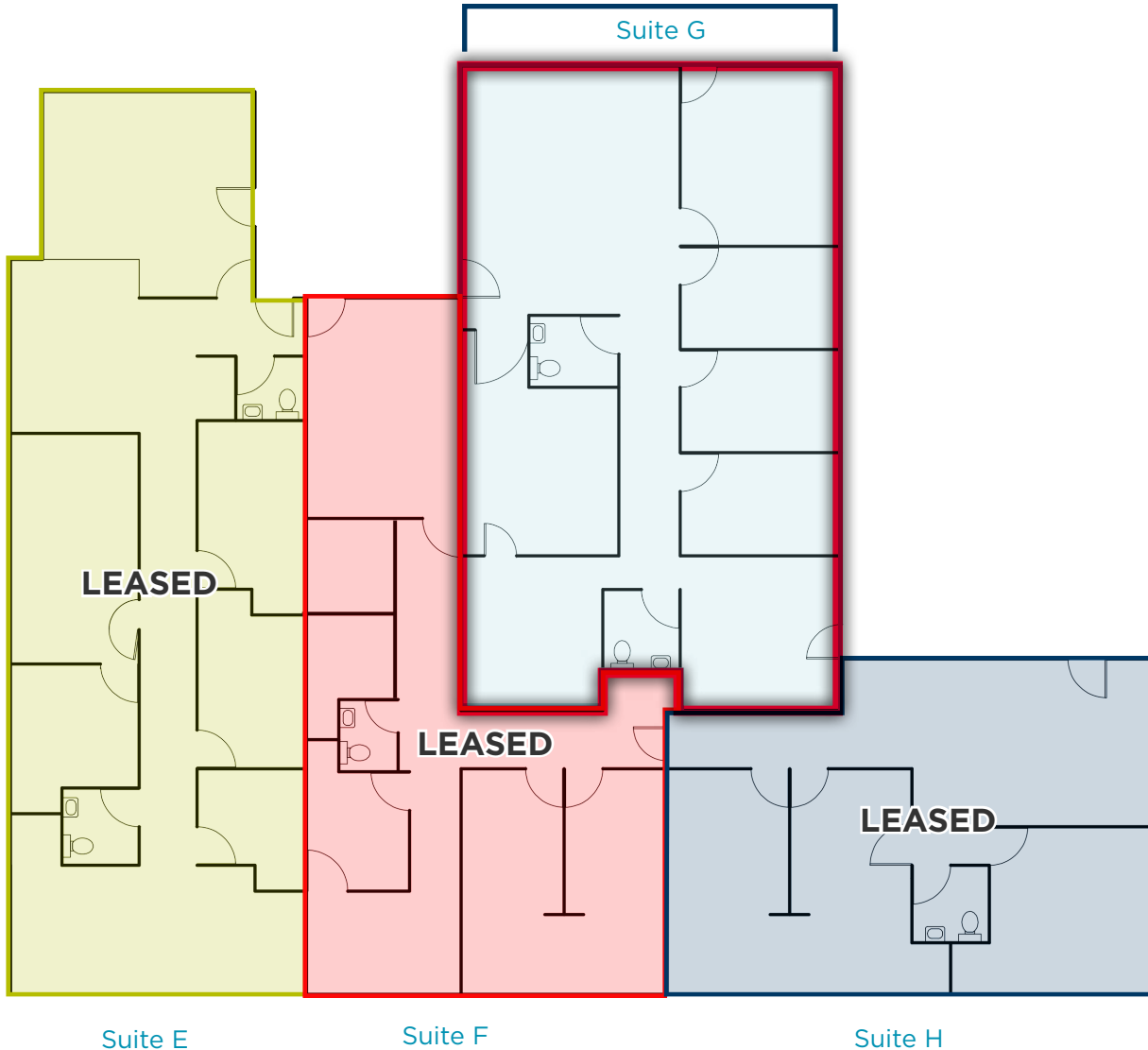
Kristin Frickel

Associate
+1 661 912 6005
kristin.frickel@cushwake.com
LIC. 02249947

5060 California Avenue
Suite 1000
Bakersfield, CA 93309
Main +1 661 327 2263
Fax +1 661 633 3801
cushmanwakefield.com

FLOOR PLAN

2828 H Street - Building 3



AVAILABLE SUITES

- Suite G : ±1,428 sq. ft.

Scott Salters

Senior Director
+1 661 204 6725
scott.salters@cushwake.com
LIC. 02068579

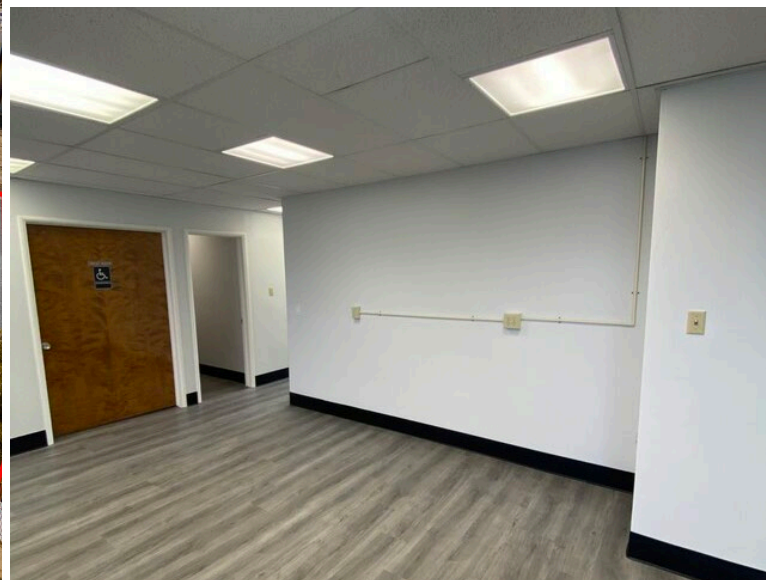
Kristin Frickel

Associate
+1 661 912 6005
kristin.frickel@cushwake.com
LIC. 02249947

5060 California Avenue
Suite 1000
Bakersfield, CA 93309
Main +1 661 327 2263
Fax +1 661 633 3801
cushmanwakefield.com

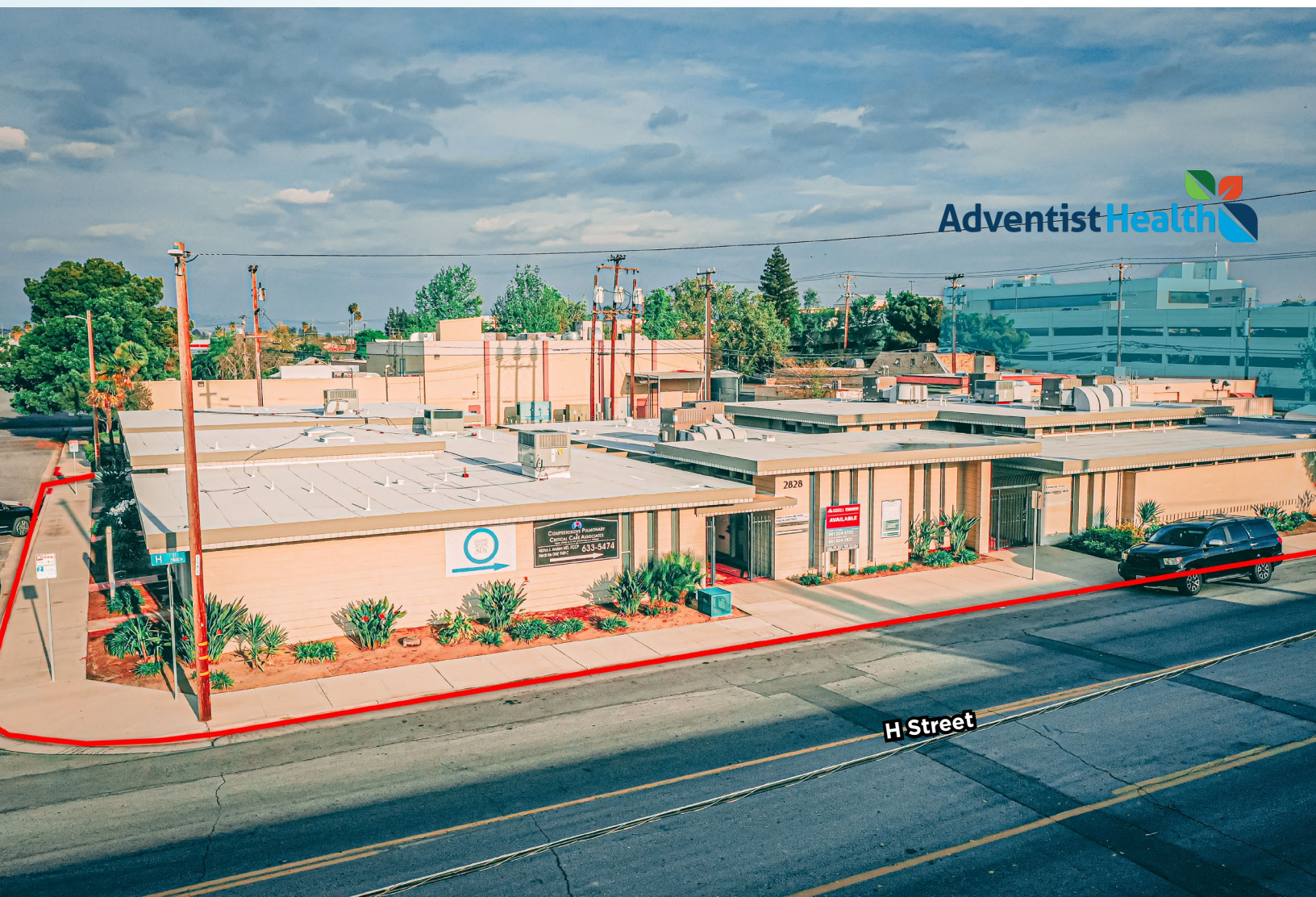


PROPERTY PHOTOS





THE LOCATION





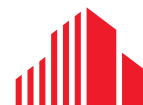
Scott Salters

Senior Director
+1 661 204 6725
scott.salters@cushwake.com
LIC. 02068579

Kristin Frickel

Associate
+1 661 912 6005
kristin.frickel@cushwake.com
LIC. 02249947

5060 California Avenue
Suite 1000
Bakersfield, CA 93309
Main +1 661 327 2263
Fax +1 661 633 3801
cushmanwakefield.com



**CUSHMAN &
WAKEFIELD**