

BLOOMFIELD SQUARE SHOPPING CENTER

3205-3271 South Boulevard / Auburn Hills, MI



MID-AMERICA®
Real Estate-Michigan, Inc.

FOR LEASE



RETAIL OPPORTUNITY

BLOOMFIELD SQUARE SHOPPING CENTER



Address

3205-3271 South Boulevard
Auburn Hills, MI 48326

Availability

8,400 SF

Features

Former Rite Aid available for lease in an excellent neighborhood Great Lakes Ace Hardware anchored center located on the northwest corner of South Boulevard and Squirrel Road. The center has approximately 135 parking spaces and offers prime visibility to South Boulevard. Great opportunity for an auto part or dollar store user. Motivated landlord!

Area Tenants

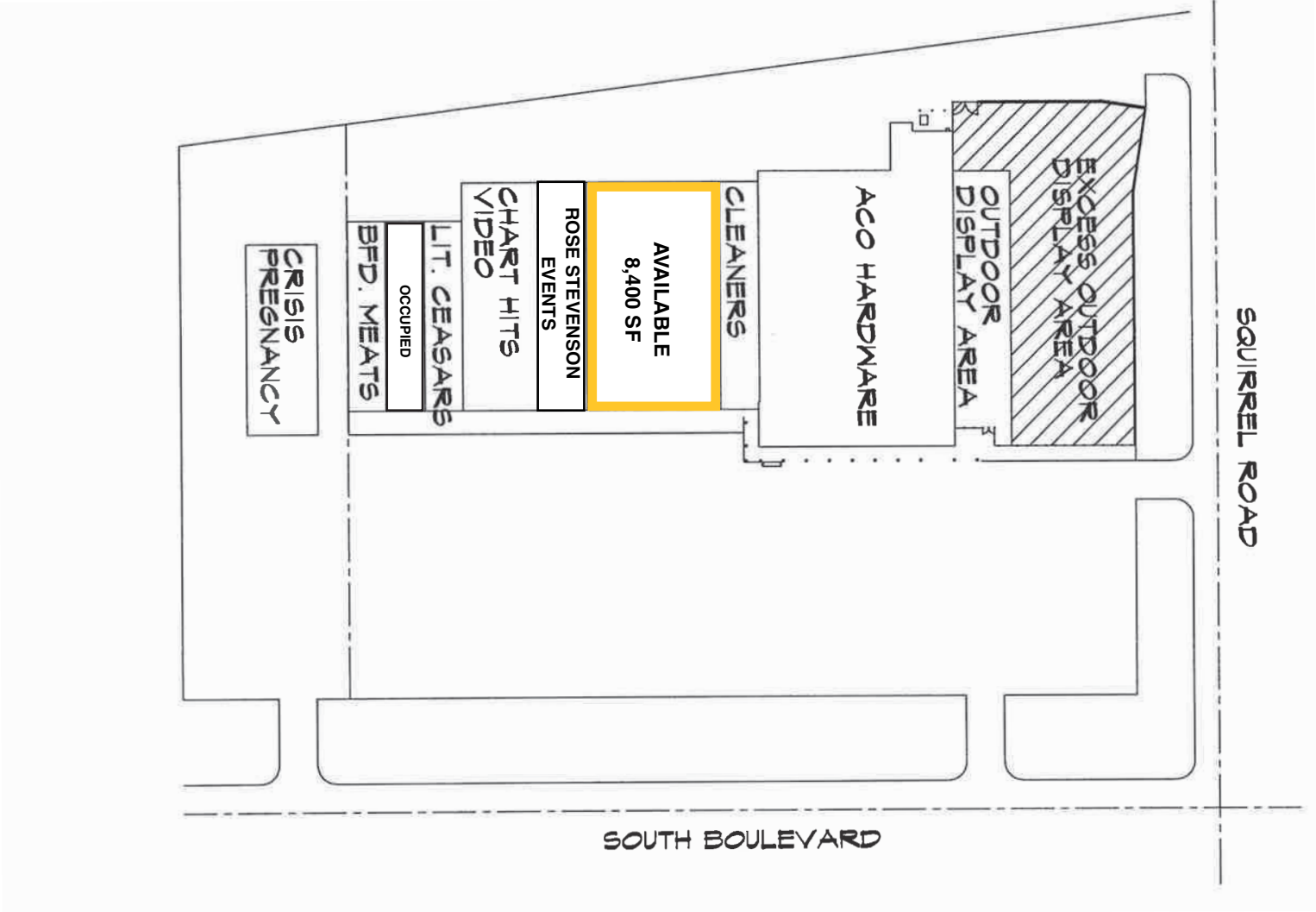
Great Lakes



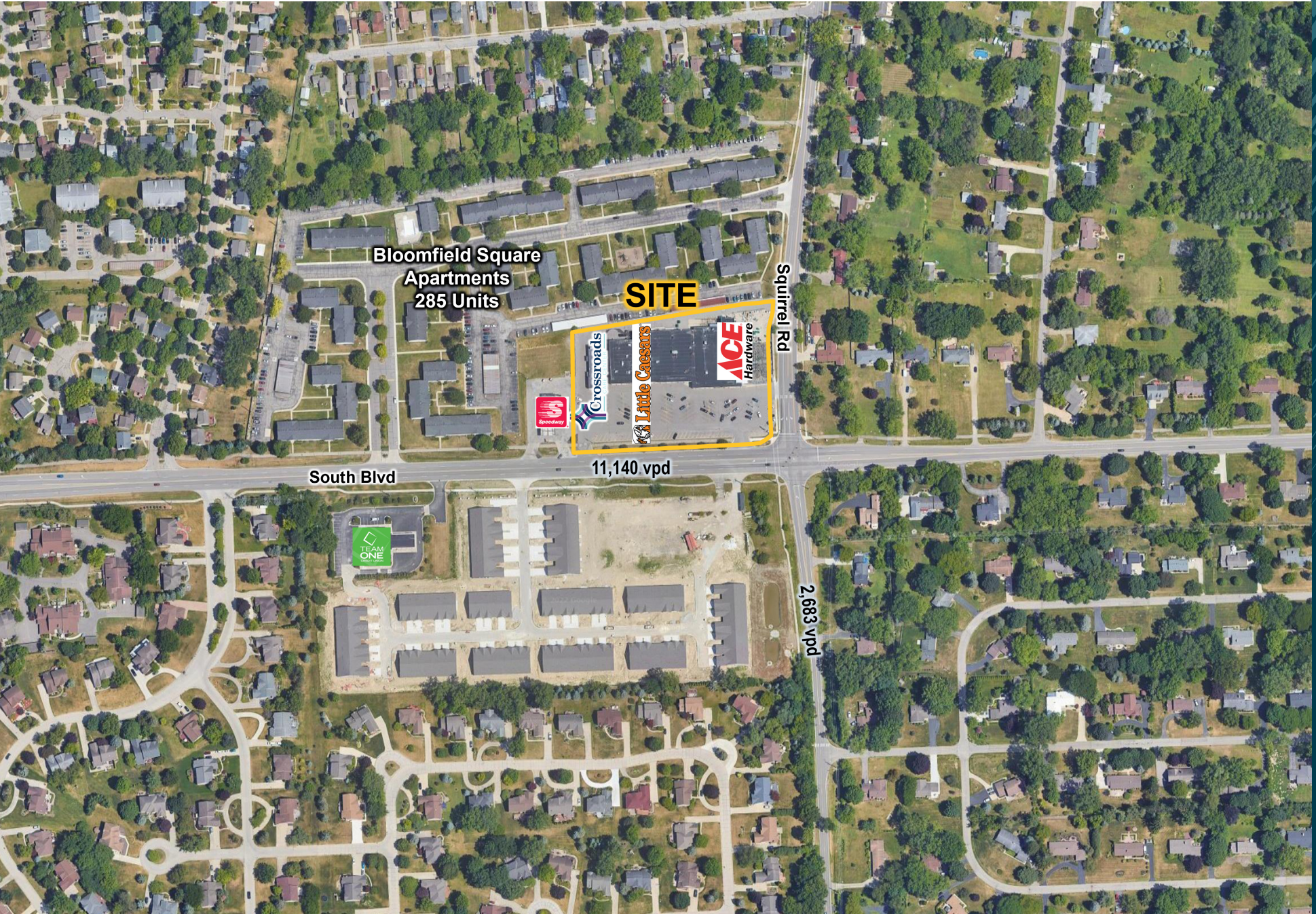
Demographics (2024)

	1 MILE	3 MILES	5 MILES
POPULATION	8,843	55,014	169,166
HOUSEHOLDS	4,100	22,855	67,077
AVG HOUSEHOLD INCOME	\$129,561	\$147,397	\$146,212
DAYTIME POPULATION	6,815	70,948	211,017

BLOOMFIELD SQUARE SHOPPING CENTER



BLOOMFIELD SQUARE SHOPPING CENTER



Bloomfield Square
Apartments
285 Units

SITE

Squirrel Rd

Speedway
Crossroads
Little Caesars
ACE Hardware

South Blvd

11,140 vpd

2,683 vpd

TEAM ONE

AERIAL

BLOOMFIELD SQUARE SHOPPING CENTER



Eric
Unatin

Mid-America Real Estate -
Michigan, Inc.

T: 248.855.6800

EUnatin@MidAmericaGrp.com

Anthony
Mekani

Mid-America Real Estate -
Michigan, Inc.

T: 248.855.6800

AMekani@MidAmericaGrp.com



38500 Woodward Ave, Suite 100
Bloomfield Hills, Michigan 48304
248.855.6800

MidAmericaGrp.com