

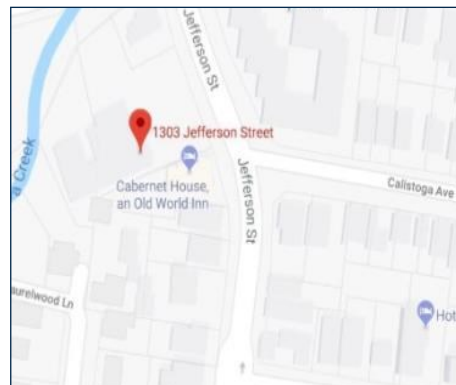
# 1303 Jefferson Street Napa, CA 94559



**±1,479 SF Office For Lease \$3.10/SF/MO. (Utilities Included)**

## **Suite #100-A**

- Five Private Offices
- Reception Area
- Beautiful Conference Room w/Sliding Glass Pocket Doors
- Kitchenette
- Three (3) Reserved Parking Spaces & Common Guest Parking Area
- Common Restrooms
- Garden Office with Creekside Setting
- Close to Freeways & Downtown Napa
- Full Service Other Than Janitorial



**Michael Moffett**

License #00946472

707.479.1976

[mmoffett@cnapavalley.com](mailto:mmoffett@cnapavalley.com)

1775 Lincoln Ave.

Napa, CA 94558

**Cathy D'Angelo Holmes**

License #01355085

707.304.3338

[cholmes@cnapavalley.com](mailto:cholmes@cnapavalley.com)





# 1303 Jefferson Street Napa, CA 94559

## Suite #100-A Photos



**Michael Moffett**

License #00946472

707.479.1976

[mmoffett@cnapavalley.com](mailto:mmoffett@cnapavalley.com)

1775 Lincoln Ave.

Napa, CA 94558

**Cathy D'Angelo Holmes**

License #01355085

707.304.3338

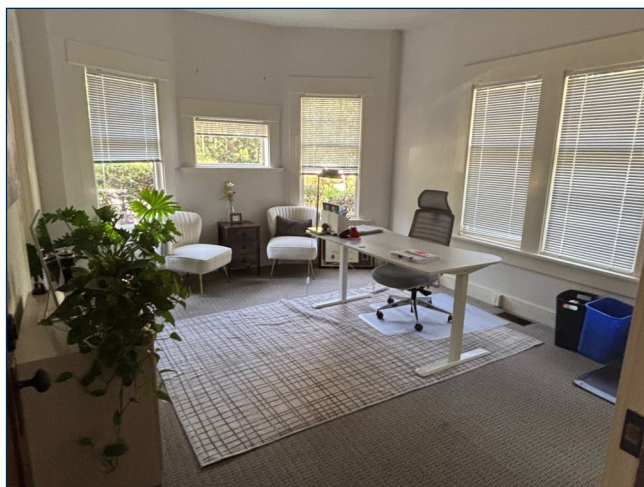
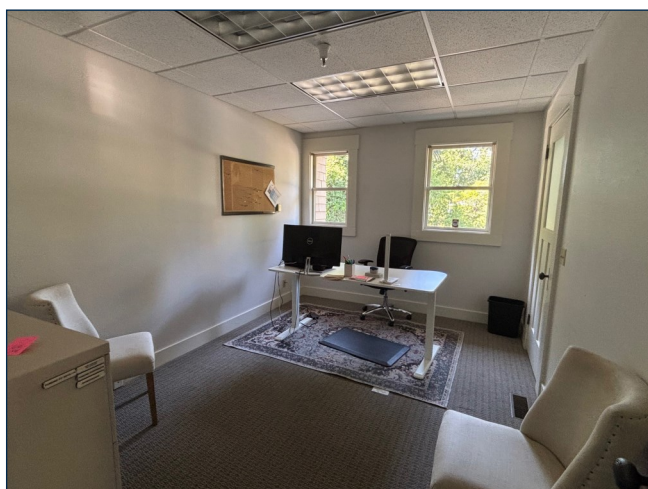
[cholmes@cnapavalley.com](mailto:cholmes@cnapavalley.com)





# 1303 Jefferson Street Napa, CA 94559

## Suite #100-A Photos



**Michael Moffett**

License #00946472

707.479.1976

[mmoffett@cnapavalley.com](mailto:mmoffett@cnapavalley.com)

1775 Lincoln Ave.

Napa, CA 94558

**Cathy D'Angelo Holmes**

License #01355085

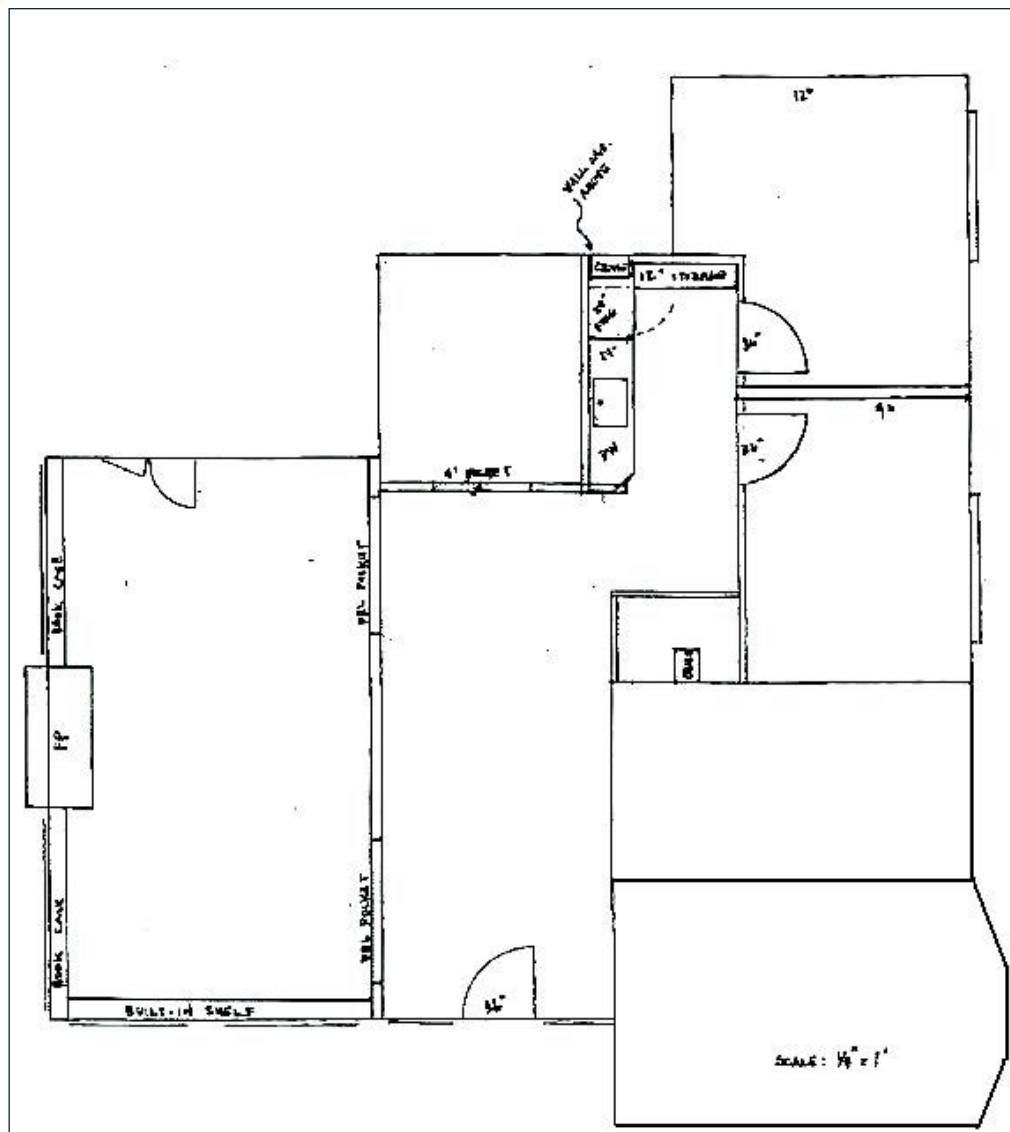
707.304.3338

[cholmes@cnapavalley.com](mailto:cholmes@cnapavalley.com)



# 1303 Jefferson Street Napa, CA 94559

## Suite #100-A Floorplan



**Michael Moffett**  
License #00946472  
707.479.1976  
mmoffett@cnapavalley.com

1775 Lincoln Ave.  
Napa, CA 94558

**Cathy D'Angelo Holmes**

License #01355085  
707.304.3338  
cholmes@cnapavalley.com

