



RESTAURANT/CAFE +
RETAIL FOR LEASE



Blake Taylor
WCCR
West Coast Commercial Realty

3710 South Angeline Street | Seattle WA 98118



Rainier Avenue South

RETAIL FRONTAGE
Retail #3

RETAIL FRONTAGE
Retail #2

RETAIL FRONTAGE
Retail #1

South Angeline Street



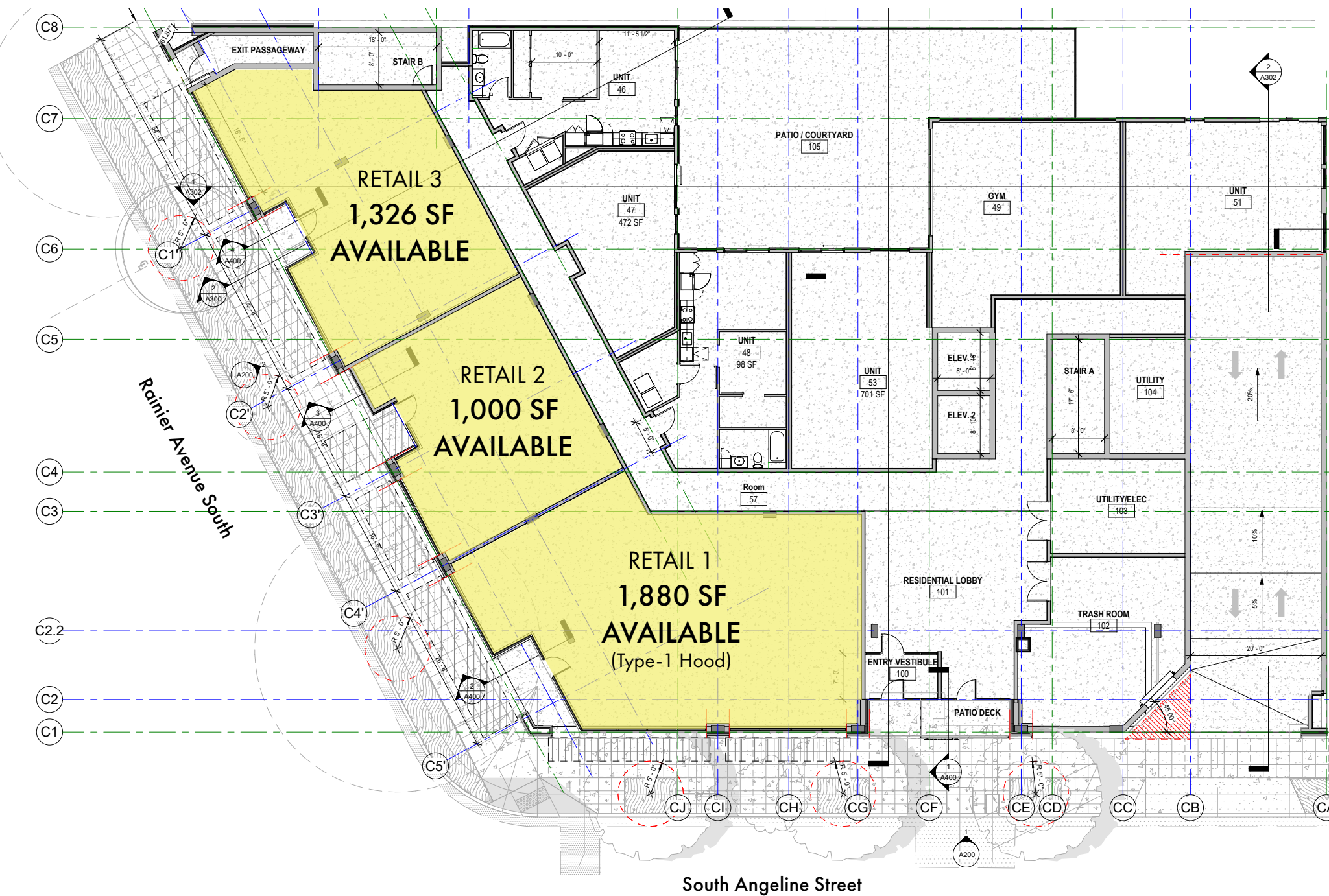
Rainier Avenue South

South Angeline Street



MONARCH

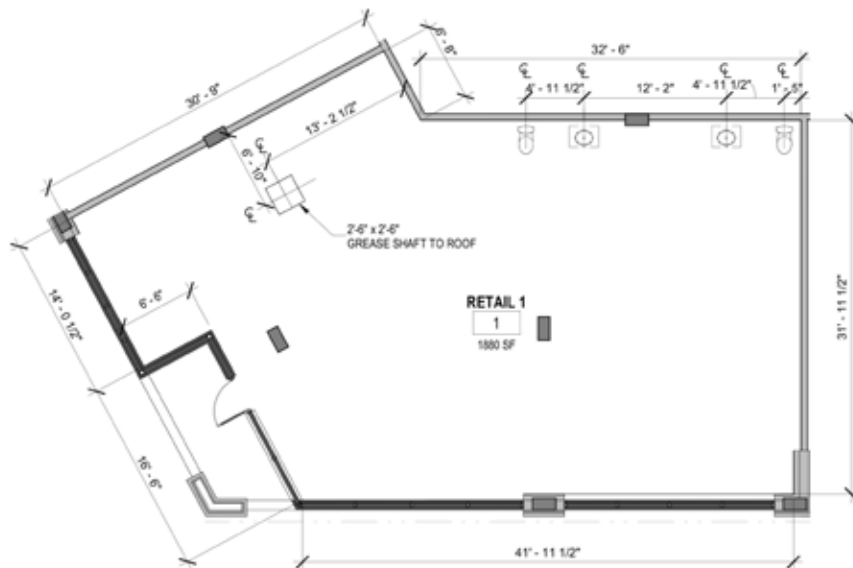
SITE PLAN:



RETAIL 1 - 1,880 SF AVAILABLE

Space Details:

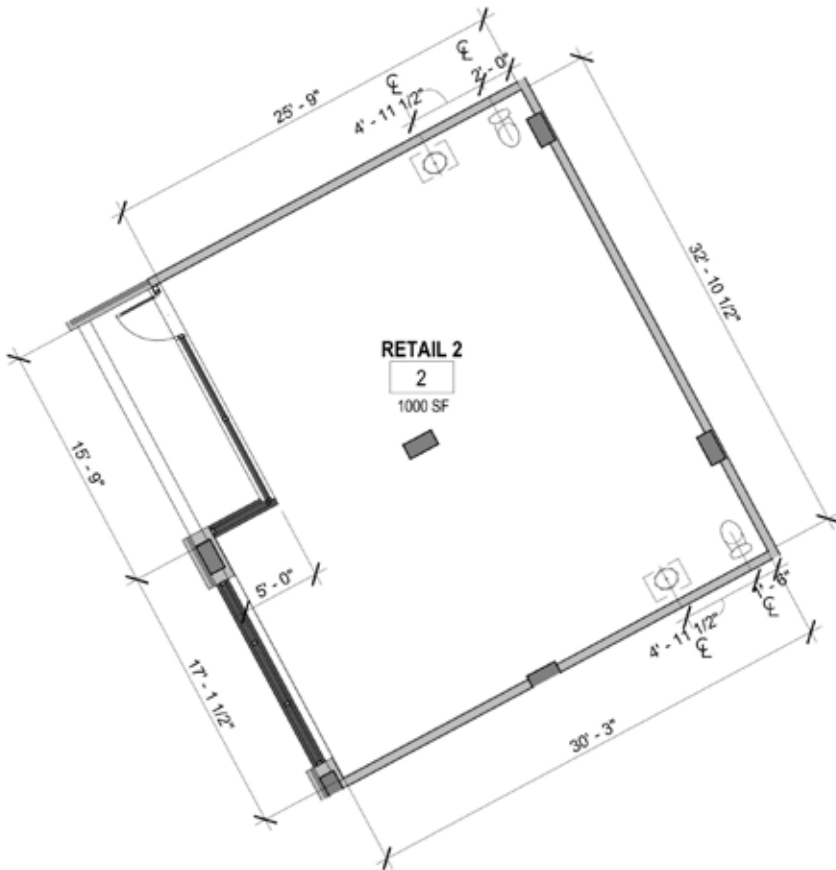
- corner restaurant - seeking local food concept!
- 1,880 SF
- type-1 hood
- combine with Retail #2 - 1,000 SF for total of (2,880 SF)
- tenant improvement package available
- mixed-use - 74 apartments above



RETAIL 2 - 1,000 SF AVAILABLE

Space Details:

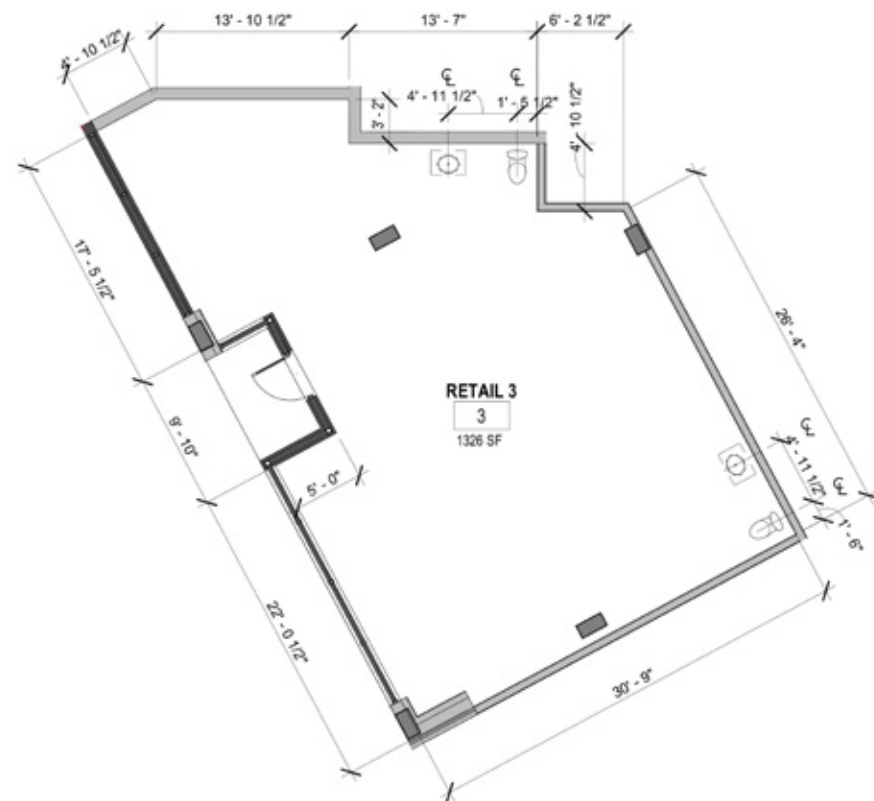
- inline retail
- 1,000 SF
- combine with Retail #1 or #3
- tenant improvement package available



RETAIL 3 - 1,326 SF AVAILABLE

Space Details:

- inline retail
- 1,326 SF
- combine with Retail #2 (2,326 SF)
- tenant improvement package available



90



S. Alaska Street serves as the gateway to public transportation and I-5, making this an easily accessible urban neighborhood with a small-community feel.

S Alaska St
COLUMBIA CITY

MLK Jr S

Rainier Ave S

Seward Park

Lake Washington



93

Walk Score
"Walker's Paradise"

61

Transit Score
"Good Transit"

83

Walk Score
"Very Bikeable"



WCCR

West Coast Commercial Realty

Blake Taylor

206.931.0525

blake@wccommercialrealty.com



DISCLAIMER: The above information has been secured from sources believed to be reliable, however, no representations are made to its accuracy. Prospective tenants or buyers should consult their professional advisors and conduct their own independent investigation. Site plan and configuration are subject to change. Properties are subject to change in price and/or availability without notice. West Coast Commercial Realty, LLC