



16607 MUESCHKE RD
CYPRESS, TEXAS
77433

Call For Price Information
+/- 3 Acres
(713) 825-9087





16607 MUESCHKE ROAD CYPRESS, TX 77433

Flat lot with lots of old oak trees. Commercial potential.

UNRESTRICTED





PROPERTY SUMMARY

Close proximity to 99 and 290.

UNRESTRICTED

High volume of traffic on Mueschke Road

260 FT of frontage on Mueschke

Close proximity to major hospitals,
residential developments, grocery stores
and restaurants.



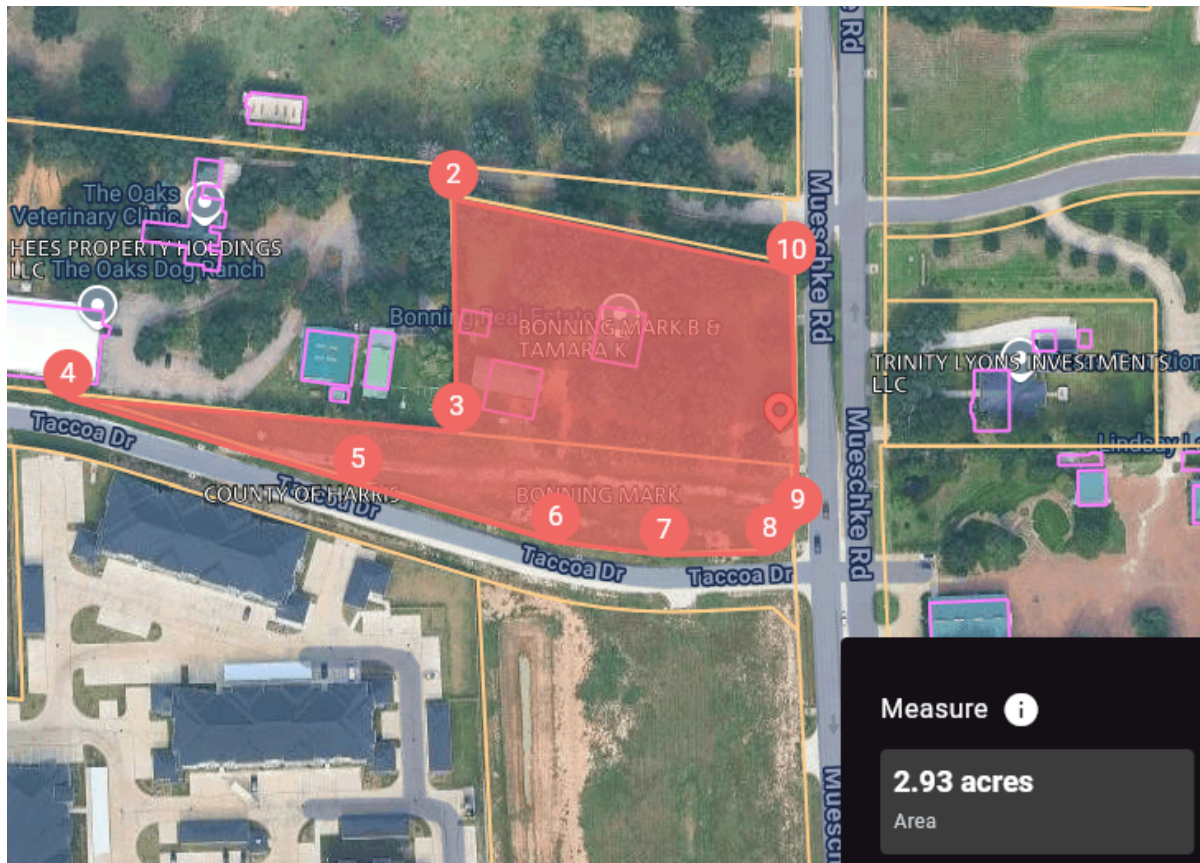


DRIVING DISTANCE



Houston Premium Outlets	11 MIN Drive
HEB	9 MIN Drive
Memorial Hermann Hospital	10 MIN Drive
Highway 290	6 MIN Drive
Highway 99	5 MIN Drive
Villasport Athletic Club	15 MIN Drive
Cinemark Theatre	8 MIN Drive
Downtown Houston	35 MIN Drive

PROPERTY BOUNDARY



AERIAL

