

SALE PRICE Contact Broker
LEASE RATE Contact Broker

WEIGAND
COMMERCIAL



KECHI OFFICE/WAREHOUSE

FOR SALE/LEASE 902 Venture Ct., Kechi, KS 67067

SITE SIZE
15,982.2 SF (0.37 A)

BUILDING SIZE
7,920 SF±

TOTAL AVAILABLE SF
7,920 SF±

ZONING
C-3, HEAVY COMMERCIAL

YEAR BUILT
2023-2024

CEILING HEIGHT
18'

OVERHEAD DOORS
1 - 12' X 14'

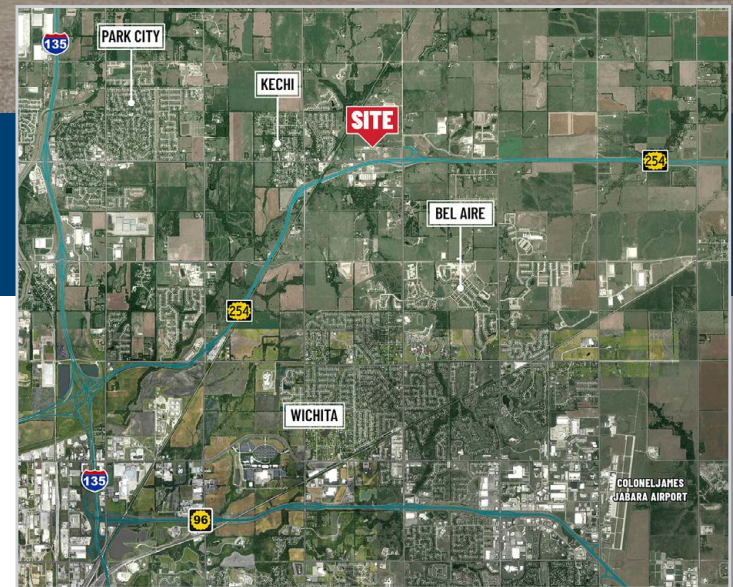
POWER
3-PHASE, 240 AMP

CONSTRUCTION
STEEL

PARKING
DOOR SIDE

PROPERTY HIGHLIGHTS

- First generation shell office/warehouse available for sale or lease.
- Free-standing.
- Heated warehouse.
- Office finished to suit.
- Close proximity to K-254 and all other major arterials.



2025 TAXES
GENERALS: \$11,286.50 | SPECIALS: \$3,153.03

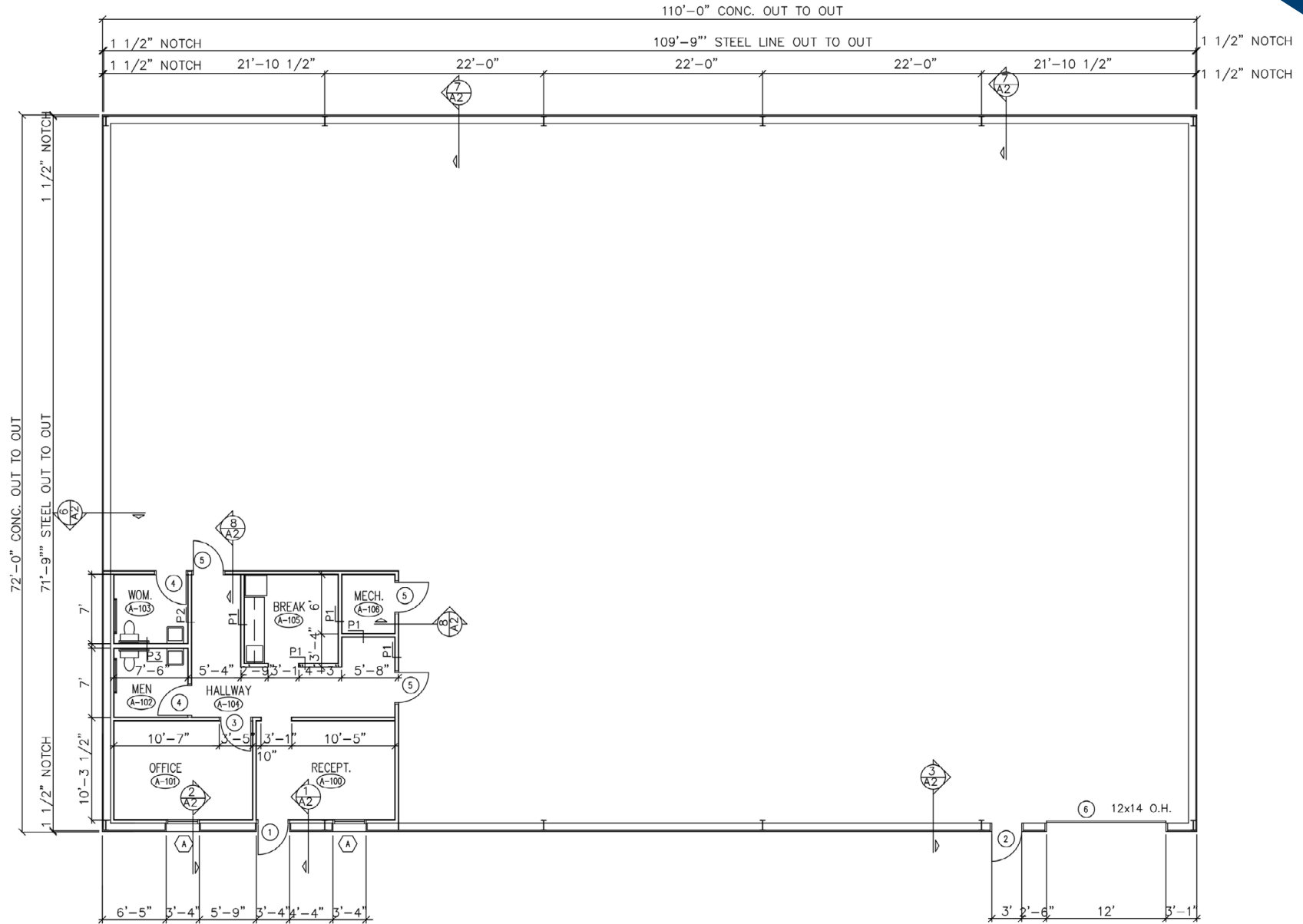


Grant Tidemann, SIOR
316-292-3908
tidemann@weigand.com

Bradley Tidemann, SIOR
316-650-8853
bradley@tidemannre.com



PROJECTED FLOOR PLAN

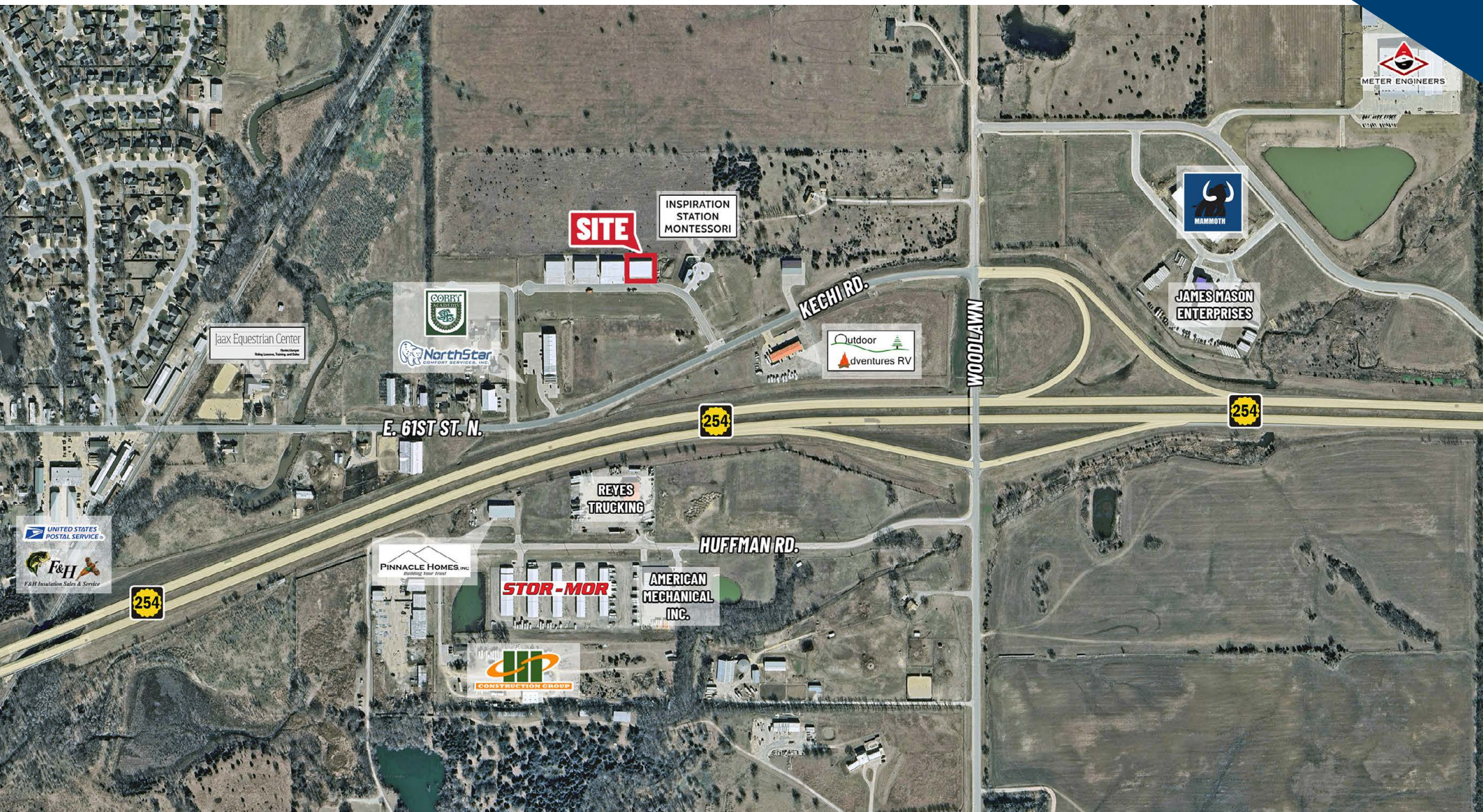


KECHI BUSINESS PARK ADDITION

FOR SALE 902 Venture Ct. | Kechi, KS 67067

WEIGAND
COMMERCIAL

AERIAL VIEW



All information furnished regarding property for sale, lease, exchange or financing is from sources deemed reliable but no guarantee is made or responsibility assumed as to its accuracy or completeness and you are advised to make your own analysis and verification.
Agent hereby notifies prospective buyer/lessee that (a) Agent will be acting as a designated agent of seller/lessor with the duty to represent seller/lessor's interest; and (b) Information given to Agent will be disclosed to seller/lessor.



Grant Tidemann, SIOR
316-292-3908
tidemann@weigand.com

Bradley Tidemann, SIOR
316-650-8853
bradley@tidemannre.com

