

±17 Acres

SE Corner of I-35W & CR 604

Alvarado, TX

High Traffic Interstate Location



5.165 Acres

11.92 Acres



±17 Acres Divisible Commercial

Alvarado, TX

Property Highlights

- ▶ Southeast Quadrant of I-35W & US Hwy 67
- ▶ Situated along I-35W carrying ±53,000 vehicles per day
- ▶ Ideal Labor Market
- ▶ Utilities to site



Distance To:

Ft. Worth	25 miles
Dallas	40 miles
DFW International	40 miles
Waco	65 miles
Austin	165 miles

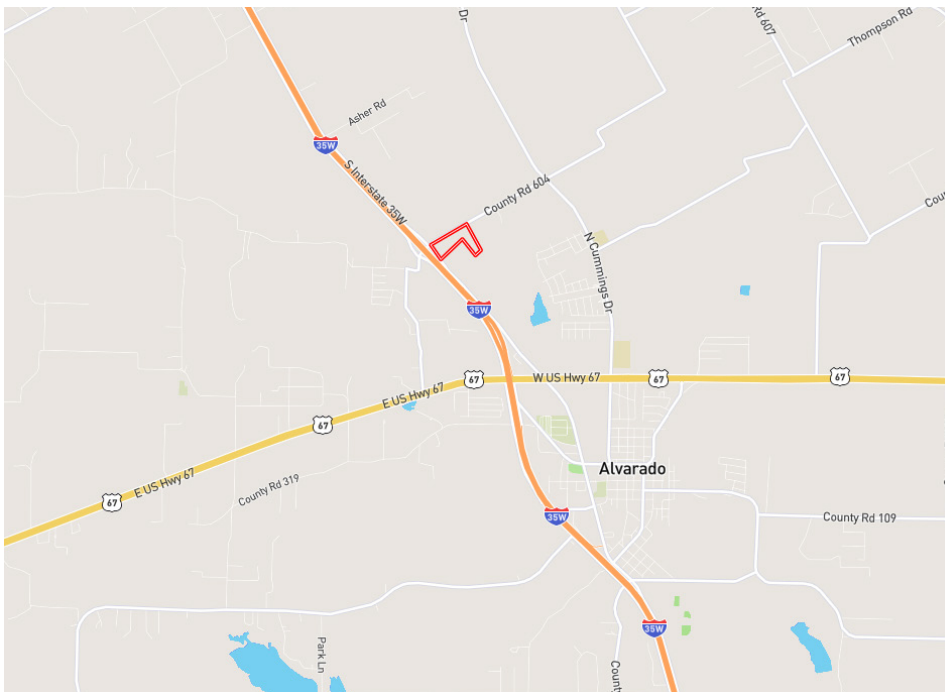
Location Highlights



South Ft. Worth
Submarket



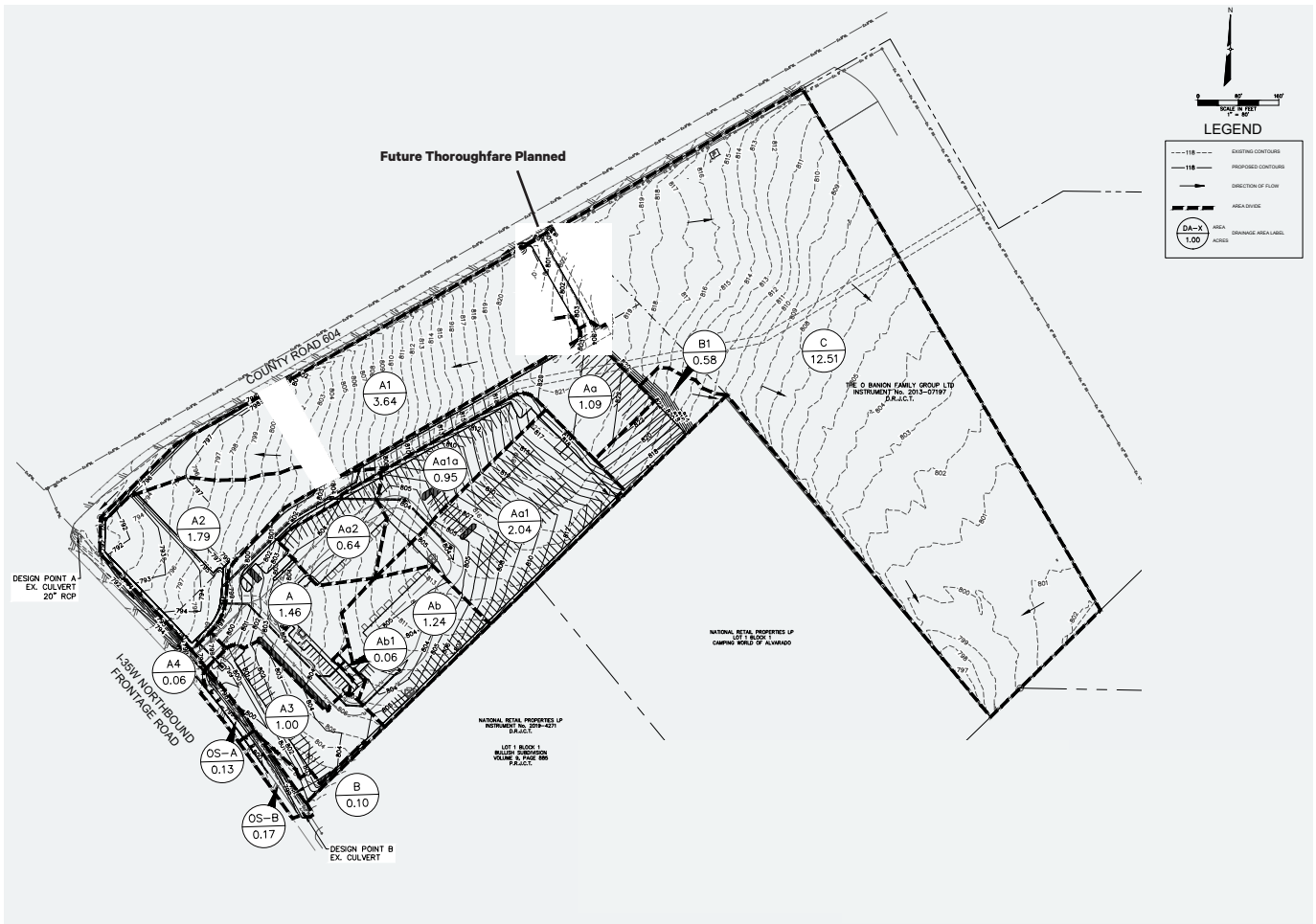
±17 Acres
Divisible



Zoned G2 General
Commercial



Ease of Access via
I-35W, US Hwy 67
and CR604



Contact Us

Stan McClure

First Vice President

214 979 6328

stan.mcclure@cbre.com

© 2025 CBRE, Inc. All rights reserved. This information has been obtained from sources believed reliable, but has not been verified for accuracy or completeness. You should conduct a careful, independent investigation of the property and verify all information. Any reliance on this information is solely at your own risk. CBRE and the CBRE logo are service marks of CBRE, Inc. All other marks displayed on this document are the property of their respective owners, and the use of such logos does not imply any affiliation with or endorsement of CBRE. Photos herein are the property of their respective owners. Use of these images without the express written consent of the owner is prohibited.