

2745 W FAIRBANKS  
WINTER PARK

FOR LEASE



BOUTIQUE MOVE-IN READY WINTER PARK OFFICE



Up to ±2,450 SF 2nd Floor Office Space Available

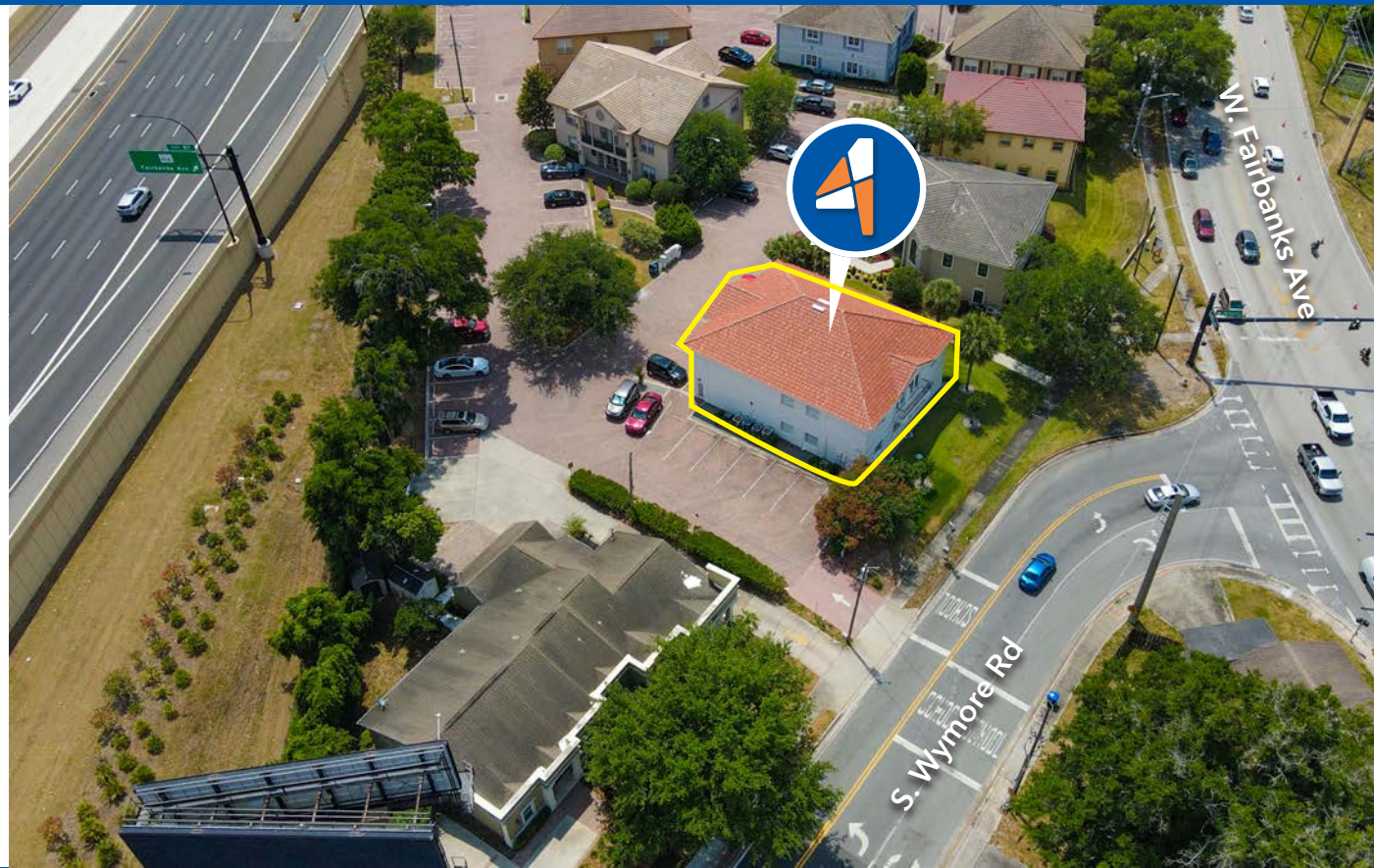
2745 W Fairbanks Ave Unit 6, Winter Park, FL 32789

CALL FOR  
DETAILS



## PROPERTY DETAILS

|                |   |
|----------------|---|
| Lease Rate:    | CALL FOR DETAILS                                      |
| Rentable SF:   | 1,088 to 2,450 SF                                     |
| Location:      | 2745 W Fairbanks Ave Unit 6,<br>Winter Park, FL 32789 |
| Municipality:  | Winter Park   |
| Parcel ID:     | 11-22-29-0619-00-060                                  |
| Zoning:        | Condo Office  |
| Property Use:  | Office Only   |
| Building Size: | 6,000 SF  |
| Stories:       | 2   |
| Year Built:    | 1990  |
| Parking:       | 4/1,000   |



## HIGHLIGHTS

- Reserved Parking
- Easy access to I-4
- Currently furnished
- Updated finishing throughout including restrooms
- Internet included with Rental Rate

## Don't Miss Out!

Contact us today to discuss this amazing, well appointed office space

## BEAUTIFUL MOVE-IN READY WINTER PARK OFFICE SPACE

Are you searching for the perfect office location to position your Winter Park business for success? Look no further than 2745 W Fairbanks Ave! This strategically situated property offers a compelling blend of convenience, professionalism, and a prestigious Winter Park address.

**Call today for additional details!**

OFFERED BY:

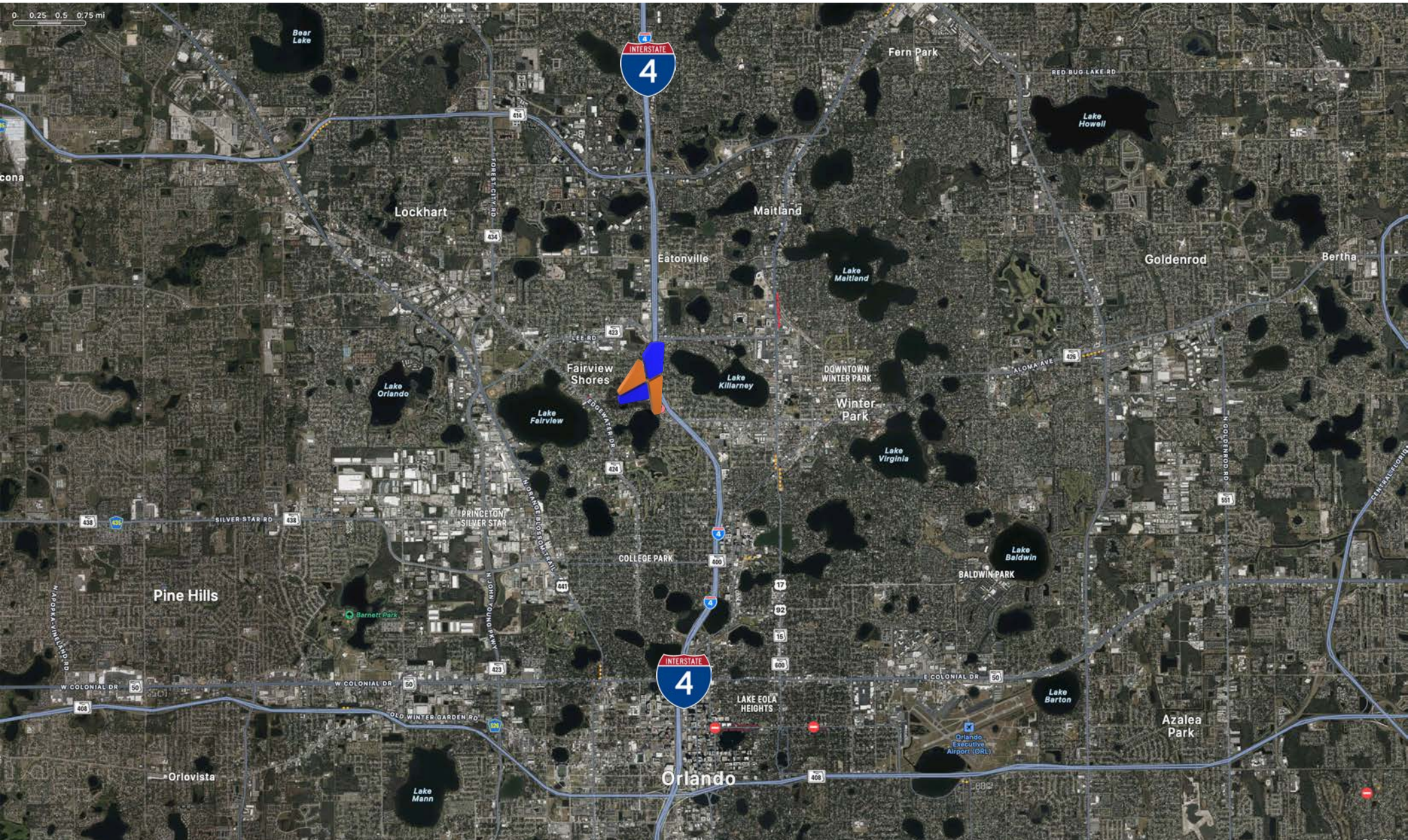


**Garrett Gleiter**  
garrett@4acre.com  
407.539.4514

**Natalee Gleiter**  
natalee@4acre.com  
407.601.1466



# LOCATION MAP

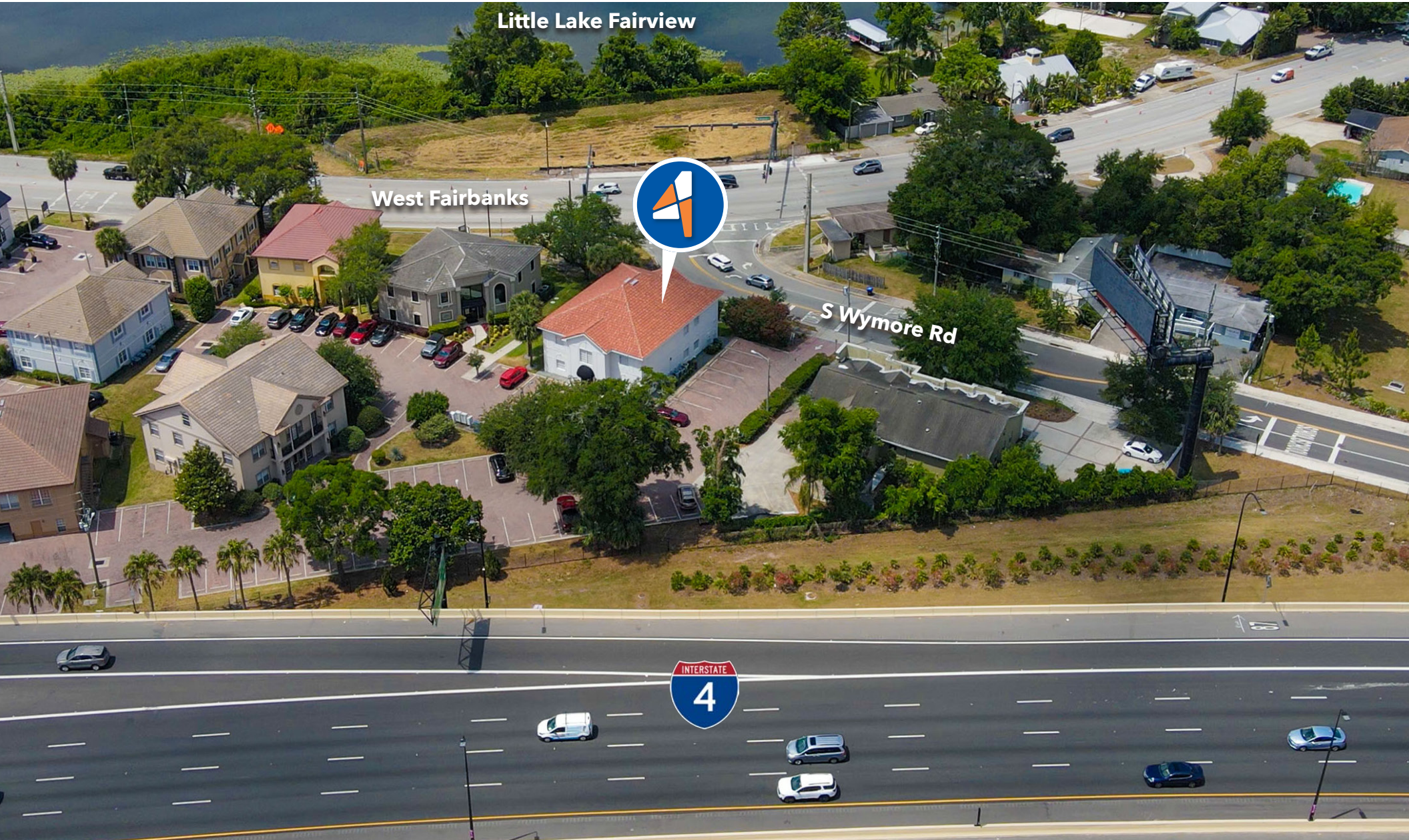


4 ACRE COMMERCIAL | CONTACT GARRETT GLEITER AT 407.539.4514 OR NATALEE GLEITER AT 407.601.1466





# PROPERTY AERIAL



Little Lake Fairview

West Fairbanks

S Wymore Rd

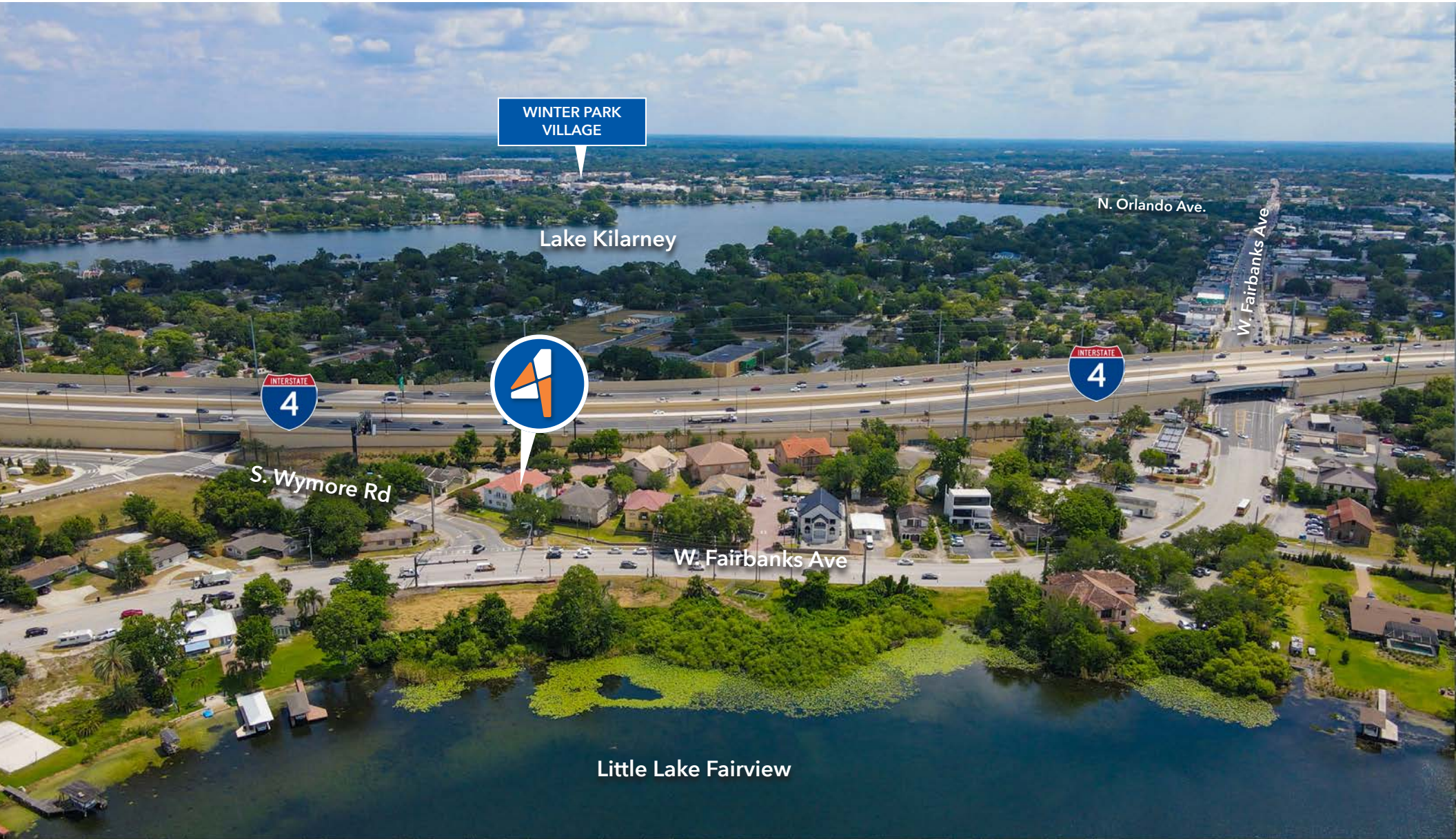


4 ACRE COMMERCIAL | CONTACT GARRETT GLEITER AT 407.539.4514 OR NATALEE GLEITER AT 407.601.1466





# LOCATION AERIAL - EAST VIEW



WINTER PARK VILLAGE

Lake Kilarney

N. Orlando Ave.

W. Fairbanks Ave



S. Wymore Rd

W. Fairbanks Ave

Little Lake Fairview



# LOCATION AERIAL - SOUTH VIEW



DOWNTOWN  
ORLANDO

W. Fairbanks Ave



Little Lake Fairview



S. Wymore Rd



# INTERIORS



FIRST FLOOR ENTRANCE



2ND FLOOR LANDING



COMMON SITTING AREA



COMMON SITTING AREA



# INTERIORS



SHARED BREAKROOM



SHARED CONFERENCE ROOM



SPACIOUS OFFICE



SPACIOUS OFFICE



# ELEVATION

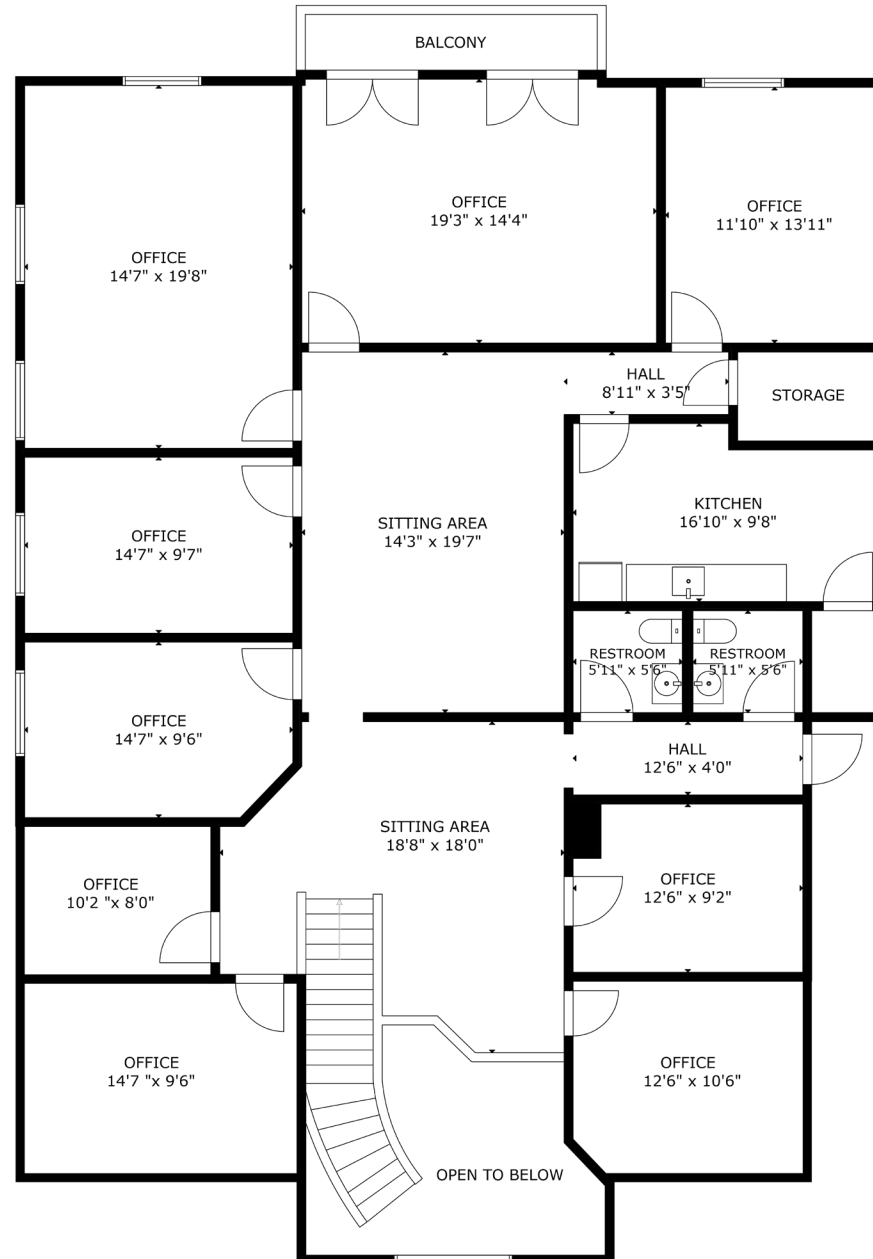


4 ACRE COMMERCIAL | CONTACT GARRETT GLEITER AT 407.539.4514 OR NATALEE GLEITER AT 407.601.1466



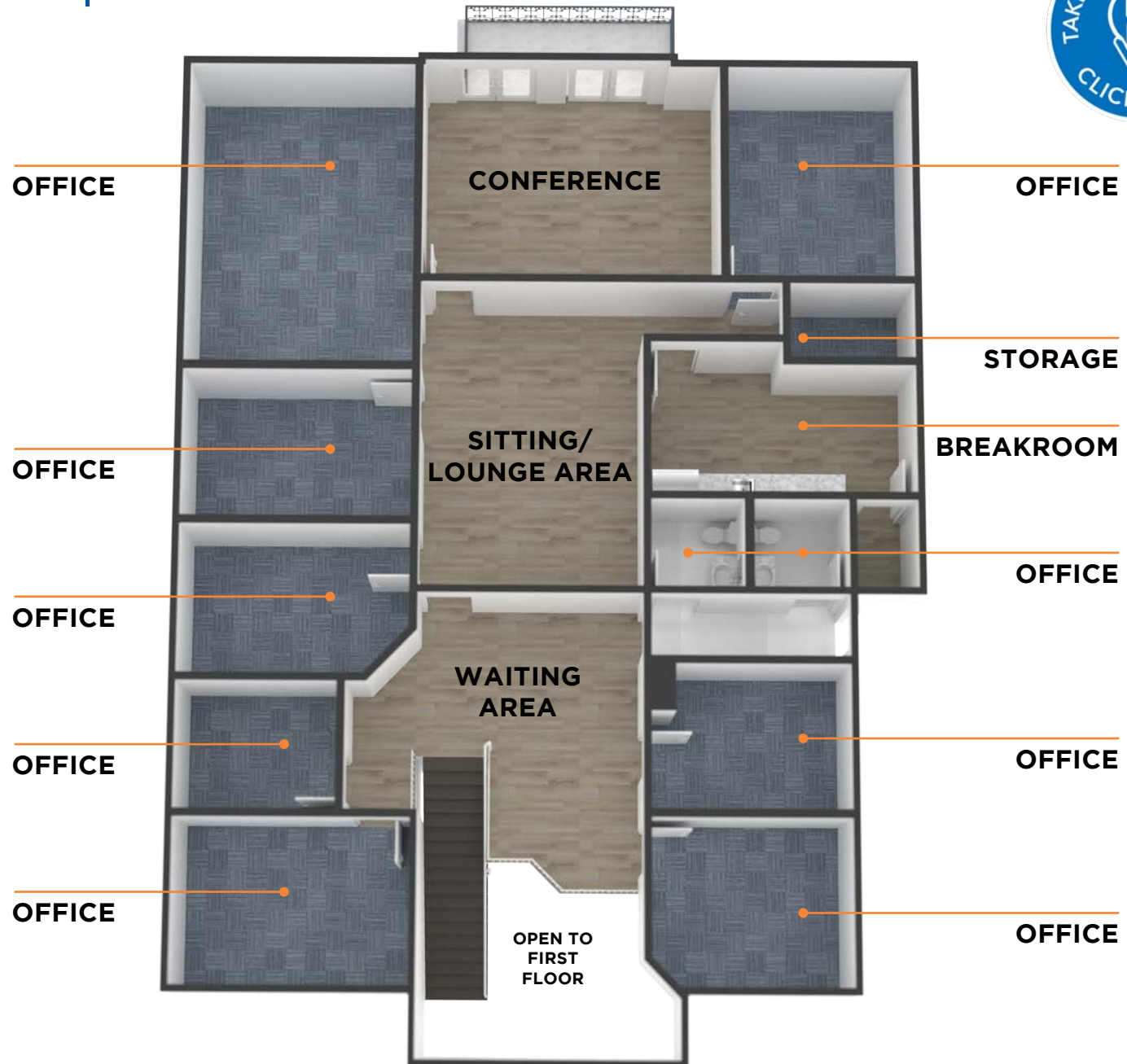


# FLOOR PLAN | 2,450 SF





# 3D LAYOUT | 2,450 SF





# SPACE OPTIONS

OPTION **A**  
1,088 SF



OPTION **B**  
1,564 SF



OPTION **C**  
1,794 SF



OPTION **D**  
2,450 SF







**Garrett Gleiter**  
garrett@4acre.com  
407.539.4514

**Natalee Gleiter**  
natalee@4acre.com  
407.601.1466

4 Acre Commercial Real Estate (4 Acre) does not represent or warranty the accuracy of the information contained herein. Such information has been given to 4 Acre by the owner of the property or obtained from other sources deemed reliable. 4 Acre has no reason to doubt its accuracy, but does not guarantee it. The reviewer(s) of this document is encouraged to perform their own research for their own purposes to verify the dependability of the information being reviewed. All information should be verified by reviewer(s) prior to purchase or lease. Unless otherwise noted, the property is being offered as-is, where is, with all faults. This information represents the proprietary work product of 4 Acre Realty, LLC and may not be copied, reproduced, modified, distributed, published, transmitted, or otherwise disclosed without the express written consent of 4 Acre Realty, LLC.