

31505 GRAND RIVER AVE.
FARMINGTON HILLS, MICHIGAN

INDUSTRIAL FOR SALE
50,646 Square Feet Available



**SIGNATURE
ASSOCIATES**
KNOW SIGNATURE | KNOW RESULTS

PRICE REDUCED FOR QUICK SALE!



PROPERTY FEATURES

- 50,646 square feet available
- Office area to-suit
- 10'-16' clear height
- (2) grade level doors, (2) truckwells
- Zoned C-3
- 110 parking spaces
- 3-story building in Downtown Farmington
- Great loft or redevelopment opportunity
- Currently multi-tenant rental income property
- Possible MEDC redevelopment site
- Sale Price: \$499,000 (\$9.85/sq.ft.)



For more information, please contact:

STEVE GORDON
(248) 948 0101
sgordon@signatureassociates.com

RICK BIRDSALL
(248) 799 3145
rbirdsall@signatureassociates.com

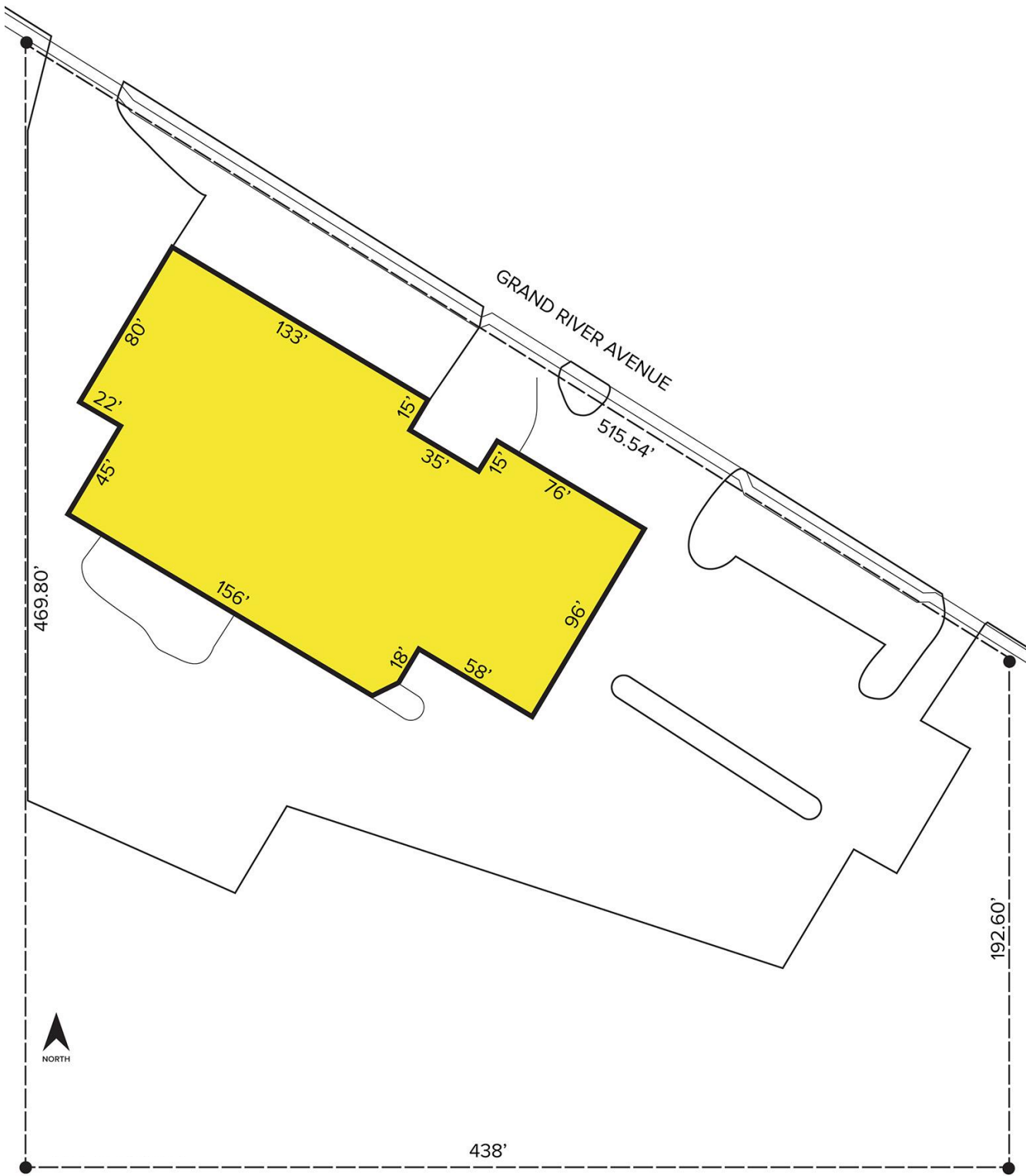
SIGNATURE ASSOCIATES
One Towne Square, Suite 1200
Southfield, MI 48076
www.signatureassociates.com

31505 Grand River Ave. – Farmington Hills, Michigan

Industrial For Sale

50,646
Square Feet
AVAILABLE

Site Plan



For more information, please contact:

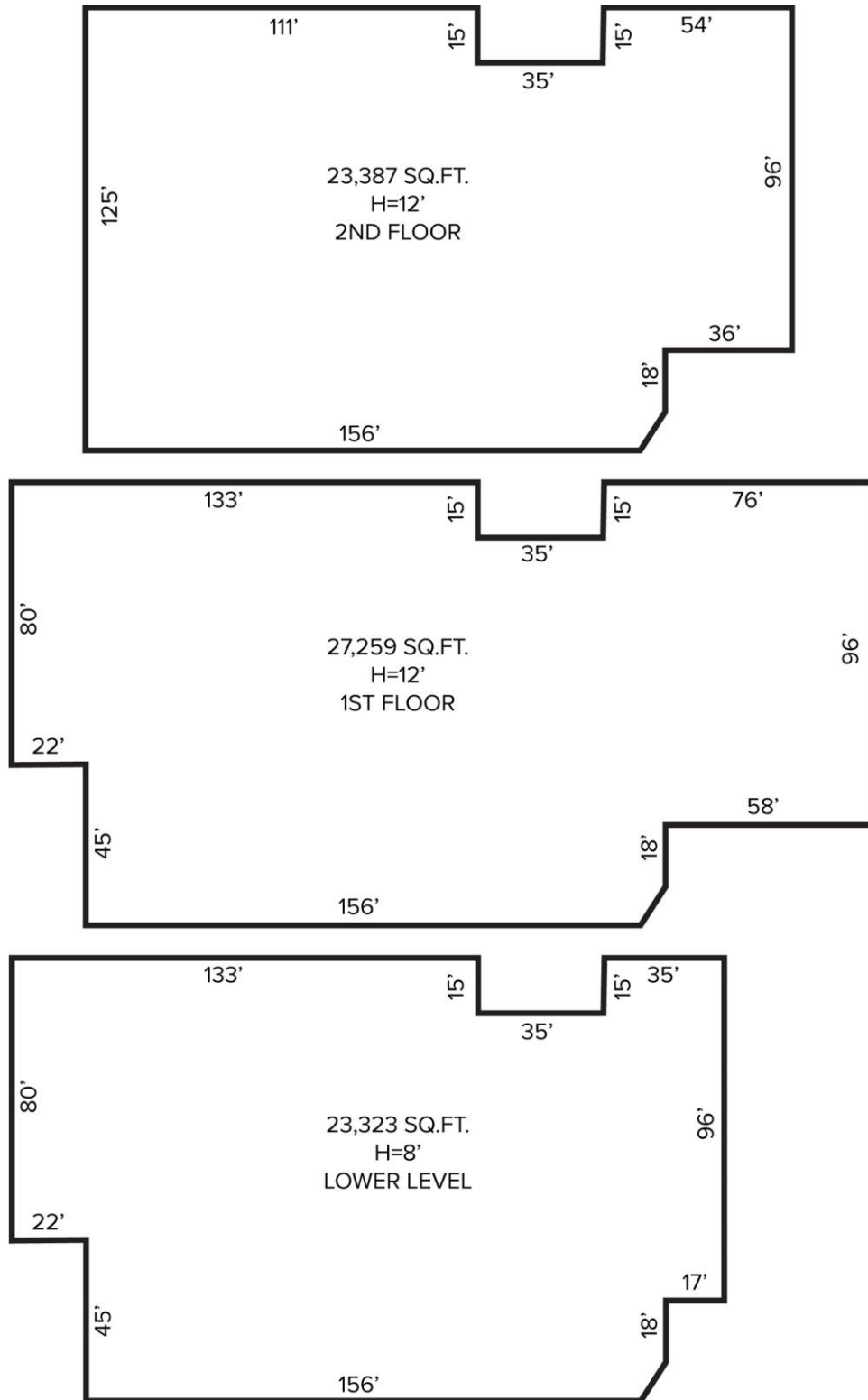
STEVE GORDON
(248) 948 0101
sgordon@signatureassociates.com

RICK BIRDSALL
(248) 799 3145
rbirdsall@signatureassociates.com

SIGNATURE ASSOCIATES
One Towne Square, Suite 1200
Southfield, MI 48076
www.signatureassociates.com

Information is subject to verification and no liability for errors or omissions is assumed. Price is subject to change and listing withdrawal.

Floor Plan



For more information, please contact:

STEVE GORDON
(248) 948 0101
sgordon@signatureassociates.com

RICK BIRDSALL
(248) 799 3145
rbirdsall@signatureassociates.com

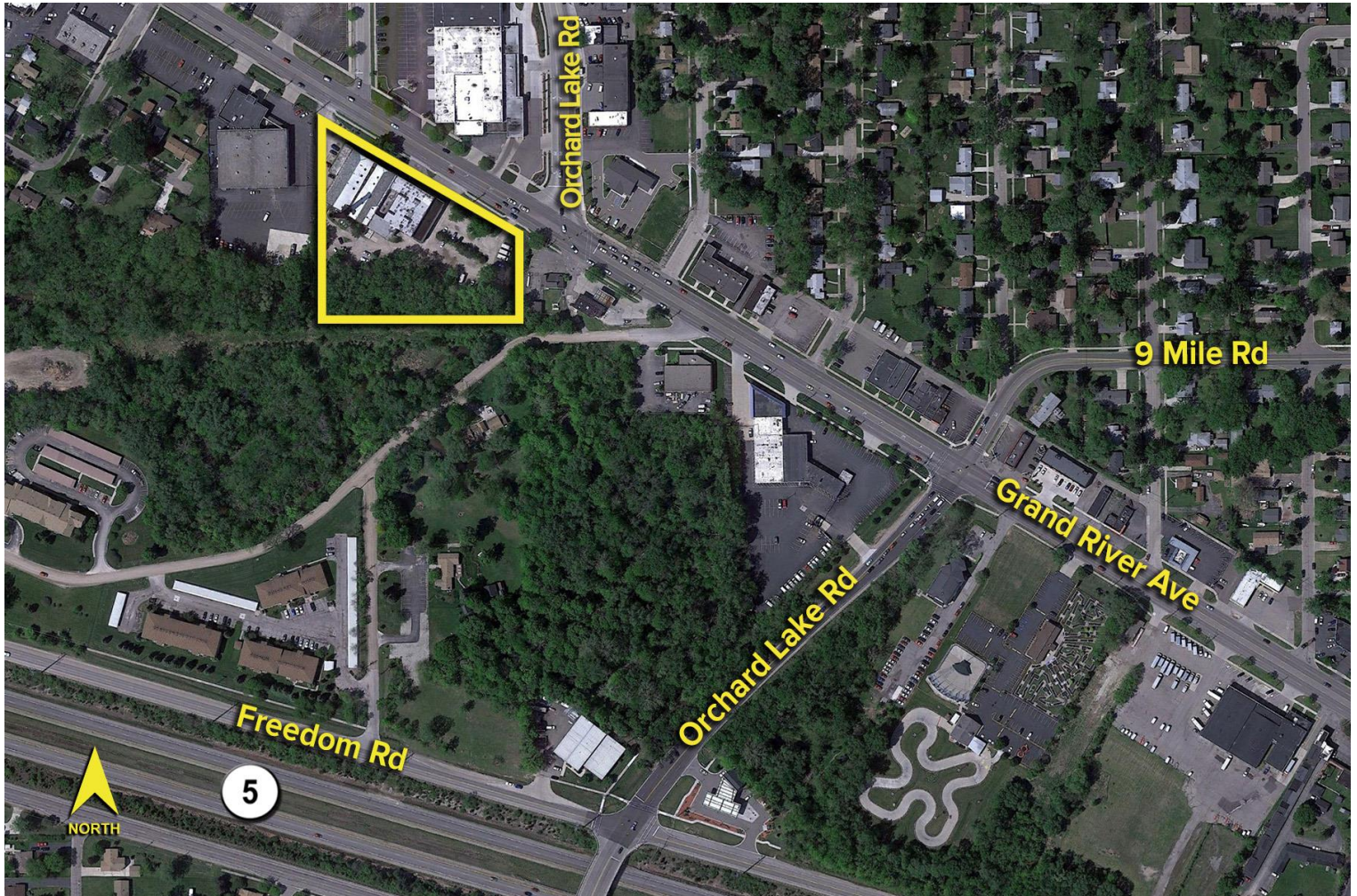
SIGNATURE ASSOCIATES
One Towne Square, Suite 1200
Southfield, MI 48076
www.signatureassociates.com

31505 Grand River Ave. – Farmington Hills, Michigan

Industrial For Sale

50,646
Square Feet
AVAILABLE

Aerial



For more information, please contact:

STEVE GORDON

(248) 948 0101

sgordon@signatureassociates.com

RICK BIRDSALL

(248) 799 3145

rbirdsall@signatureassociates.com

SIGNATURE ASSOCIATES

One Towne Square, Suite 1200

Southfield, MI 48076

www.signatureassociates.com