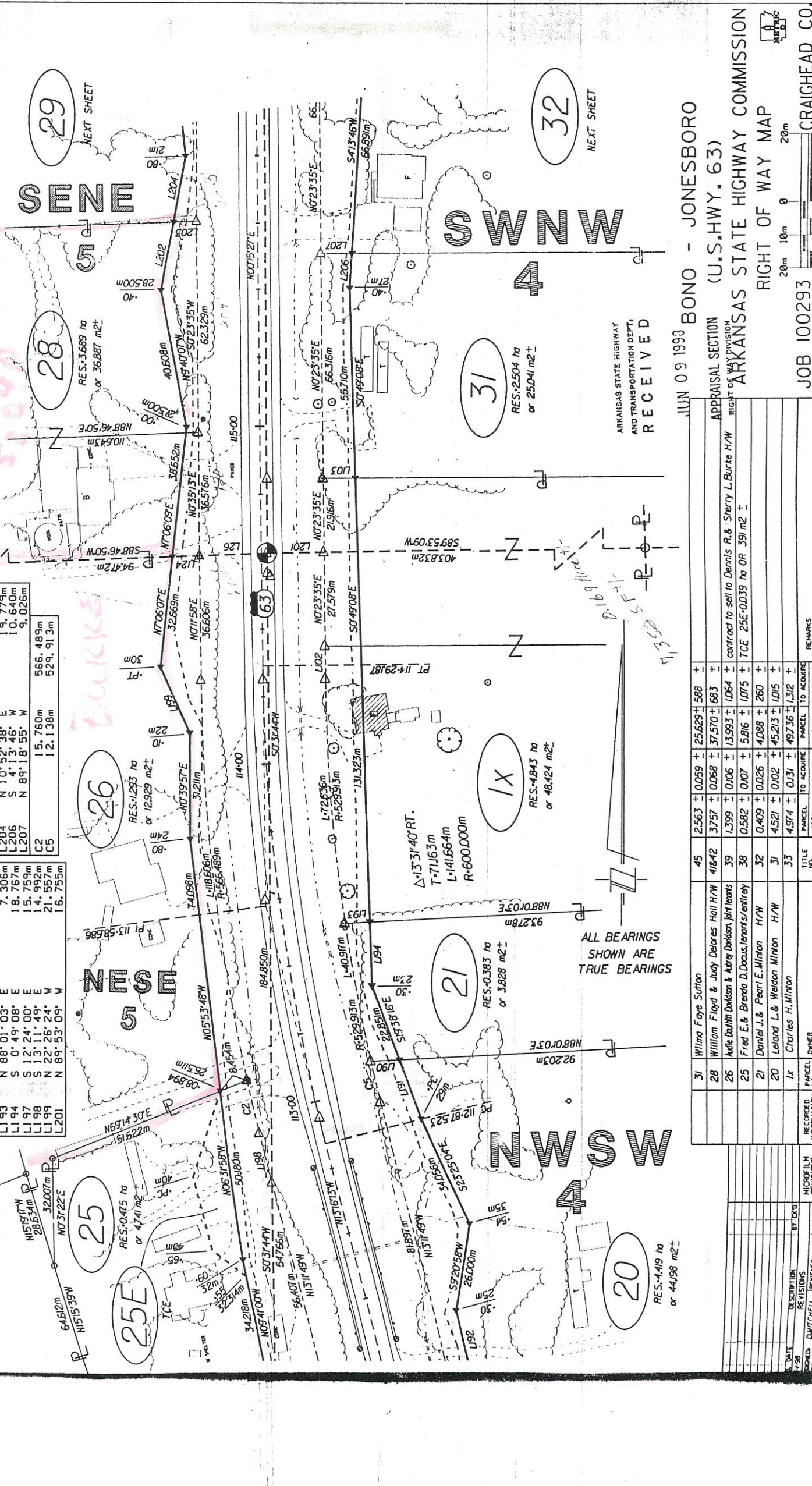


CONVERSION TABLE	See "Recorded information" below for the file location of acquired property as recorded in the Office of the County Circuit Clerk
FEET-METERS x 3.28033	
ACRES-HECTARES x 2.47104	
SOFT-SMETERS x 0.76360	
JOB NUMBER	100293
FEDERAL AID PROJECT NUMBER	100293
RIGHT OF WAY CONSTRUCTION	8
DATE	7

L202	N 10° 52' 38" E	20.919m	E	566.489m
L203	N 88° 46' 50" E	6.806m	E	529.913m
L204	N 10° 52' 38" E	19.779m	E	
L206	S 4° 13' 46" W	10.640m	W	
L207	N 89° 18' 55" W	9.026m	W	
C2		15.760m		
C5		12.138m		

L102	N 0° 23' 35" E	9.737m	E	
L103	N 89° 20' 10" W	9.492m	W	
L124	N 88° 46' 50" E	7.034m	E	
L126	S 56° 16' 57" W	7.296m	W	
L190	N 88° 01' 03" E	8.382m	E	
L191	S 19° 38' 16" E	18.216m	E	
L193	N 88° 01' 03" E	7.306m	E	
L194	S 0° 49' 08" E	18.767m	E	
L197	S 12° 24' 00" E	15.753m	E	
L198	S 13° 11' 49" E	14.992m	E	
L199	N 22° 26' 24" W	21.557m	W	
L201	N 89° 53' 09" W	16.755m	W	



L205	N 15° 17' 45" W	81.897m	W	
L206	S 92° 20' 56" W	26.000m	W	
L207	N 15° 17' 45" W	34.056m	W	
C2		52.223044E		
C5		52.223044E		

L208	N 15° 17' 45" W	56.407m	W	
L209	S 0° 31' 44" W	54.766m	W	
L210	N 15° 17' 45" W	50.180m	W	
C2		50.180m		
C5		50.180m		

L211	N 15° 17' 45" W	50.180m	W	
L212	S 0° 31' 44" W	54.766m	W	
L213	N 15° 17' 45" W	50.180m	W	
C2		50.180m		
C5		50.180m		

L214	N 15° 17' 45" W	50.180m	W	
L215	S 0° 31' 44" W	54.766m	W	
L216	N 15° 17' 45" W	50.180m	W	
C2		50.180m		
C5		50.180m		

L217	N 15° 17' 45" W	50.180m	W	
L218	S 0° 31' 44" W	54.766m	W	
L219	N 15° 17' 45" W	50.180m	W	
C2		50.180m		
C5		50.180m		

L220	N 15° 17' 45" W	50.180m	W	
L221	S 0° 31' 44" W	54.766m	W	
L222	N 15° 17' 45" W	50.180m	W	
C2		50.180m		
C5		50.180m		

L223	N 15° 17' 45" W	50.180m	W	
L224	S 0° 31' 44" W	54.766m	W	
L225	N 15° 17' 45" W	50.180m	W	
C2		50.180m		
C5		50.180m		

L226	N 15° 17' 45" W	50.180m	W	
L227	S 0° 31' 44" W	54.766m	W	
L228	N 15° 17' 45" W	50.180m	W	
C2		50.180m		
C5		50.180m		

L229	N 15° 17' 45" W	50.180m	W	
L230	S 0° 31' 44" W	54.766m	W	
L231	N 15° 17' 45" W	50.180m	W	
C2		50.180m		
C5		50.180m		

ALL BEARINGS SHOWN ARE TRUE BEARINGS

JUN 09 1993 BONO - JONESBORO
 APPRAISAL SECTION (U.S.HWY. 63)
 RIGHT OF WAY DIVISION
 ARKANSAS STATE HIGHWAY COMMISSION
 RIGHT OF WAY MAP
 20m 10m 0 20m
 JOB 100293 CRAIGHEAD CO.

ARKANSAS STATE HIGHWAY AND TRANSPORTATION DEPT. RECEIVED

NO.	TITLE	AREA IN HECTARES	PARCEL TO ACQUIRE	AREA IN SQUARE METERS	REMARKS	
31	Wilma Faye Sifton	2.563 ±	0.059 ±	25,629 ±	588 ±	
28	William Floyd & Judy DeLores Hall H/W	418.42	3.757 ±	0.068 ±	37,570 ±	683 ±
26	Audie Daulton & Aubrey Daulton, joint tenants	39	1.399 ±	0.106 ±	13,993 ±	1,064 ±
25	Fred E. & Brenda D. Ducas, tenants in fee	38	0.582 ±	0.007 ±	5,816 ±	1,075 ±
21	Daniel J. & Pearl E. Minton H/W	32	0.409 ±	0.026 ±	4,088 ±	260 ±
20	Leland L. & Weldon Minton H/W	31	4.521 ±	0.102 ±	45,213 ±	1,015 ±
1x	Charles H. Minton	33	4.974 ±	0.131 ±	49,736 ±	1,312 ±

DATE	DESCRIPTION	BY	NO.
APPROVED	DUTCHMILL	REVIEWER	LSAGB
REVISIONS			
REVISIONS			
REVISIONS			



ANGIE GRIGGS
Realty Appraiser

Arkansas State Highway and Transportation Department
Right of Way Division
Appraisal Section
10324 Interstate 30 • P.O. Box 2261
Little Rock, Arkansas 72203-2261
Office: 501-569-2149 • Fax: 501-569-2018

ded
the
pr
th
nty

80

206

U.
ST
GH
20m