

The Bloch Building

2310 Superior Ave Cleveland, OH 44114



15614 Detroit Avenue #203 Lakewood, OH 44107
www.citiroc.com

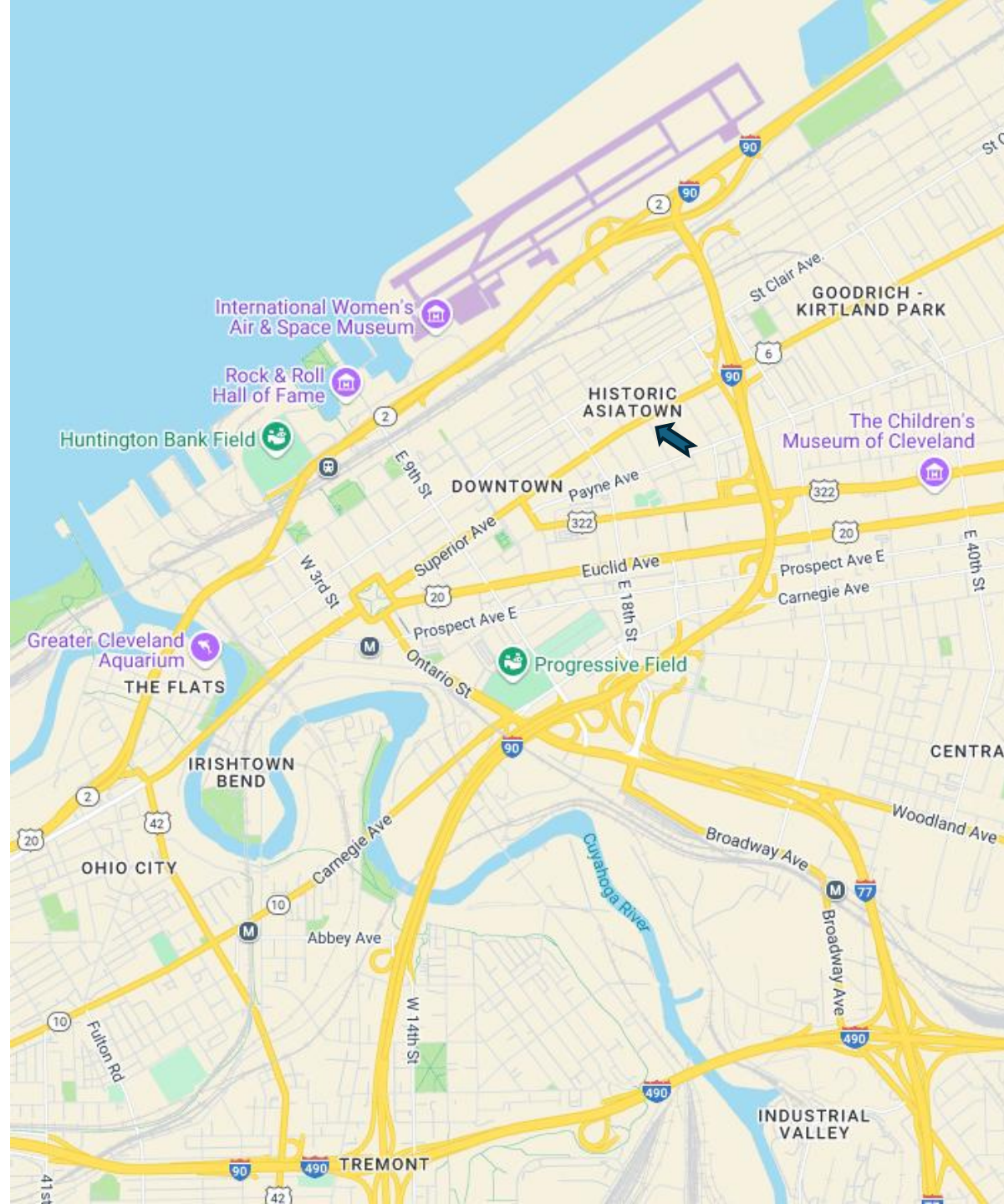
Presented by: Eric C Purcell
Director
216.702.4066/eric@citiroc.com

2310 Superior Ave Cleveland, OH 44114

The Bloch Building is a 20th-century industrial building located in the city's former garment district. Constructed around 1911 and listed on the National Register of Historic Places. The property is now home to many creative businesses and upstart ventures.

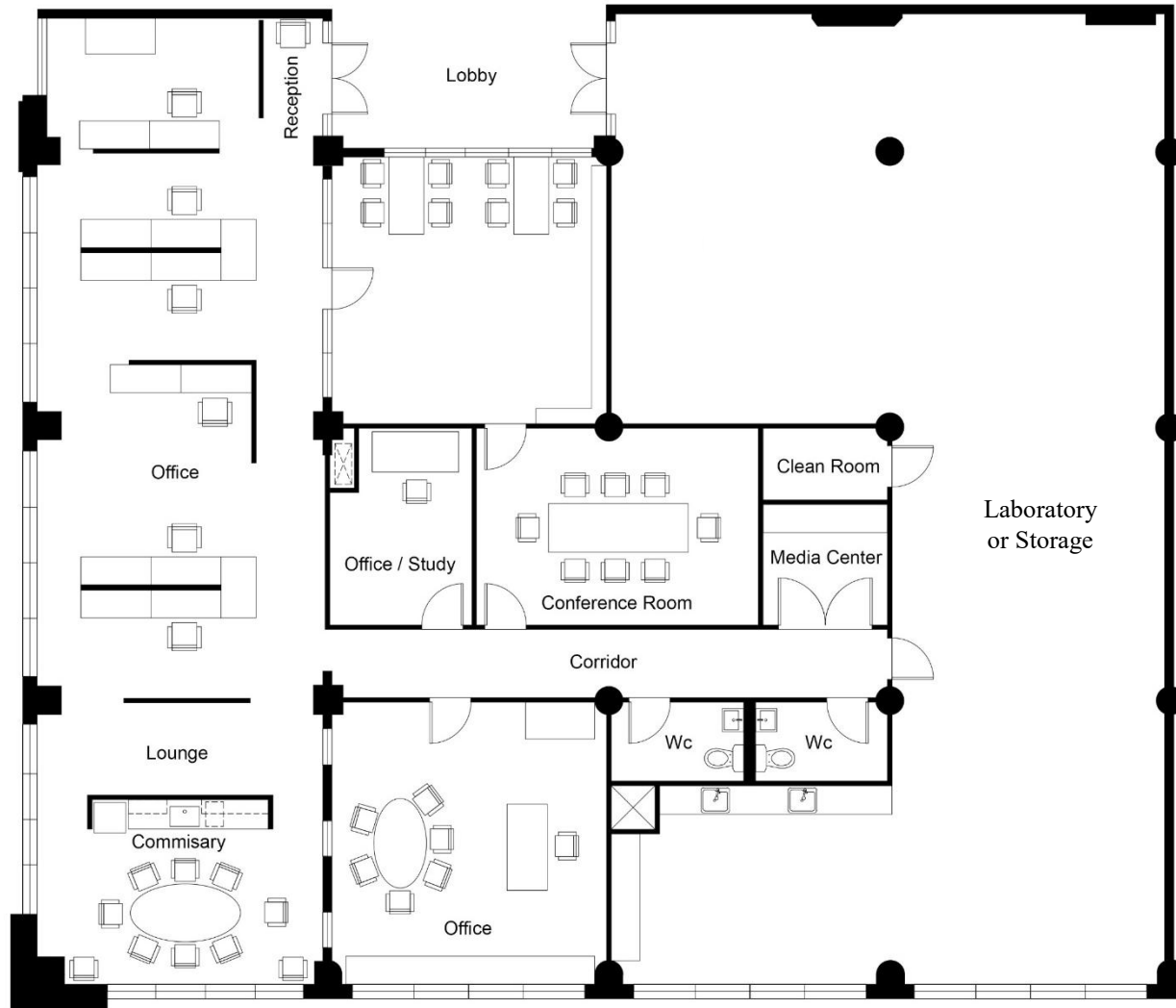
- First-time to market office/laboratory space
- Secured parking for tenant's and guests
- Garage parking available
- Loading dock available
- Onsite Storage from 1,500 – 18,000 SF
- Quick Access to I-90, I-77, and I-71
- 4 Minutes to Downtown
- 12 Minutes to Cleveland Clinic, VA, & UH Health Corridor
- Additional space available at the Tower Press Building 1900 Superior Avenue.

[Click Here](#)



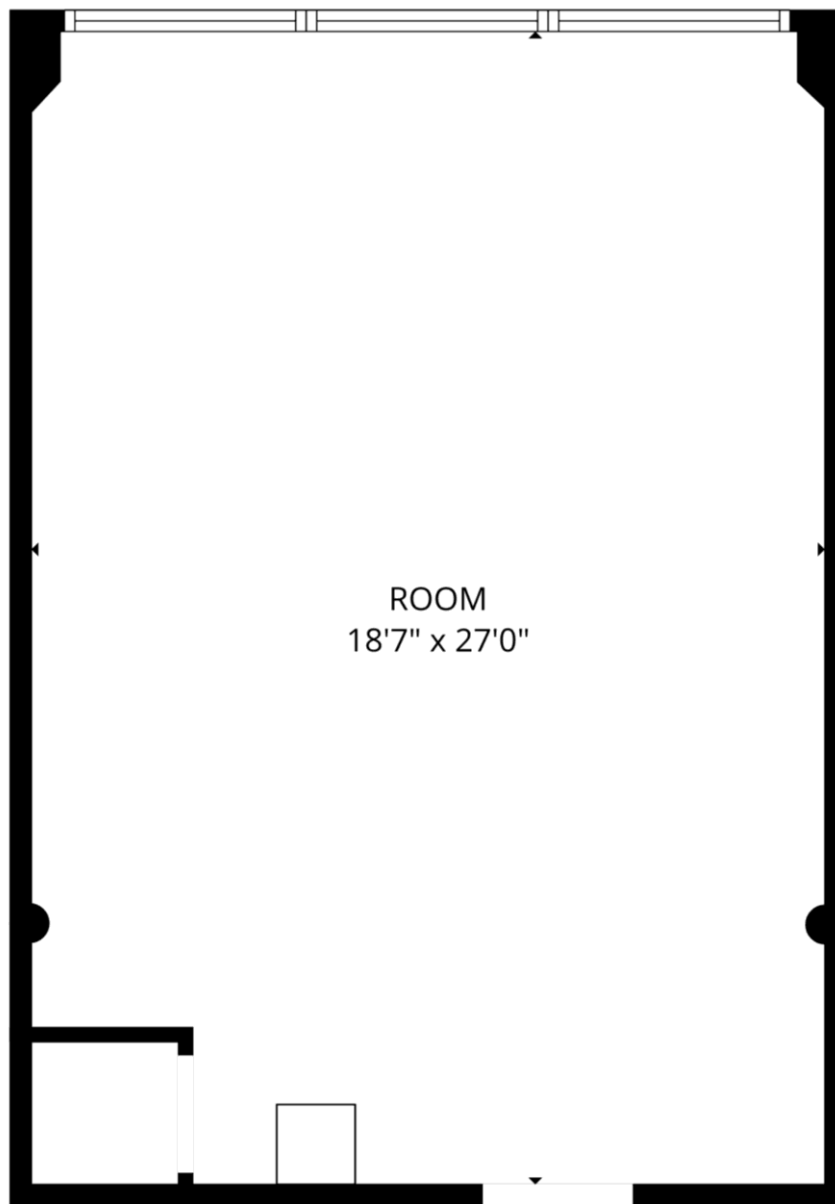
Suite 100 – 3,000 to 5,400 SF

Former Research Lab and Office



*Additional storage space located within the property.

Suite 245 – 500 SF





CUYAHOGA COUNTY
BOARD OF ELECTIONS



GREEN
GOAT
CAFE BAR

CROSSCOUNTRY
MORTGAGE

TEXTILE
LOFTS
39 Apartments

The Bloch
Building

TurnDev
Future Restaurant/Retail



distillata

RED
SPACE
HOTEL & EXPERIENCE



New CPD Headquarters

Drive Times of the Local Talent Base:

5-min: 25,885
10-min: 176,079
15-min: 542,651
25-min: 1,284,706

