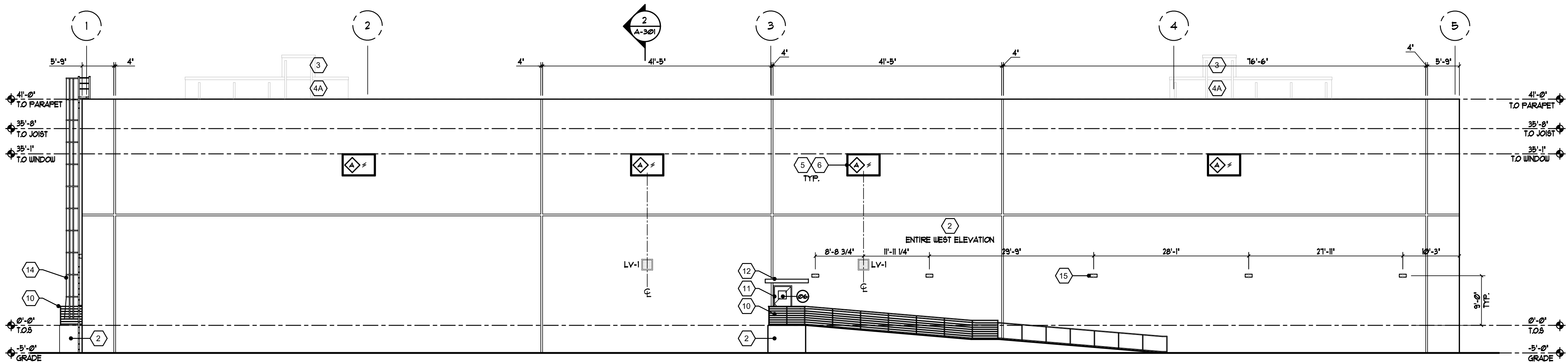
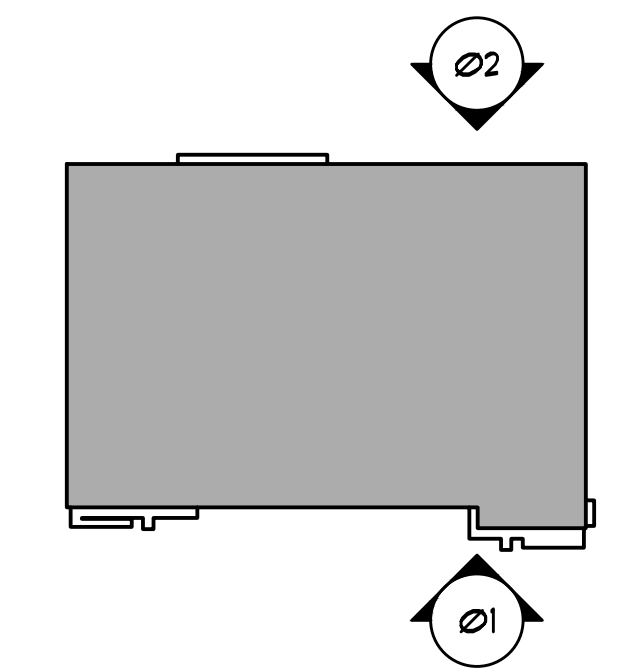


**01 EAST ELEVATION**  
SCALE: 3/32" = 1'-0"



**02 WEST ELEVATION**  
SCALE: 3/32" = 1'-0"



**KEY PLAN**

ELEVATION NOTES	
1.	ALL FINAL FINISH COLORS AND FINISHES TO BE SELECTED BY ARCHITECT AND APPROVED BY OWNER.
2.	PROPOSED FINISHES ARE INTENDED TO BE LOW MAINTENANCE AND COMMERCIAL GRADE.
3.	ALL EXTERIOR OPENING PROTECTIVES TO MEET APPLICABLE CODE REQUIREMENTS FOR HURRICANE IMPACT RESISTANCE.
4.	ALL EXTERIOR MOUNTED SYSTEMS, SIGNAGE, ACCENTS, ETC. ARE TO BE DESIGNED TO MEET APPLICABLE EXTERIOR LOADING REQUIREMENTS.

LEGEND	
MARK	DESCRIPTION
1	METAL CANOPY SURFACES PURE WHITE SEE DETAIL 10/A-503
2	SMOOTH CONCRETE SURFACES MINERAL DEPOSIT
3	SMOOTH STUCCO SURFACES CHARCOAL BLUE
4A	SMOOTH STUCCO SURFACES PURE WHITE
4B	SCORED CONCRETE SURFACES PURE WHITE
4C	SCORED STUCCO SURFACES PURE WHITE
5	STOREFRONT/WINDOW/DOOR FRAME-IMPACT RATED-CLEAR ANODIZED- REFER TO A-601 FOR DOOR/WINDOW/STOREFRONT SCHEDULES
6	STOREFRONT/WINDOW/DOOR GLAZING-IMPACT RATED-LIGHT BLUE TINT, LOW-E, LAMINATED
7	OVERHEAD ROLLING DOORS-IMPACT RATED 806241 KRYPTON
8	DOCK SHELTER BY BLUE GIANT-BLACK-PROVIDE SHOP DRAWINGS
9	DOCK BUFFERS BY BLUE GIANT-BLACK-PROVIDE SHOP DRAWINGS
10	ADA COMPLIANT STAIR/RAMP RAILING SYSTEM-METAL-CLEAR ANODIZED-PROVIDE SHOP DRAWINGS- SEE SHEET A-101 FOR MORE INFO.
11	EXTERIOR DOOR-INSULATED HOLLOW METAL 806241 KRYPTON
12	SMOOTH CONCRETE EYEBROW SURFACES MINERAL DEPOSIT
13	HYDRAULIC DOCK LEVELER BY BLUE GIANT-PROVIDE SHOP DRAWINGS
14	METAL ROOF LADDER 8017682 MINERAL DEPOSIT PROVIDE SHOP DRAWINGS, SEE SHEET A-503 FOR DETAILS
15	SCHEDULED LIGHT FIXTURE, TYP. SEE ELECTRICAL DRAWINGS FOR MORE INFORMATION
16	METAL COPING, PAINT TO MATCH PARAPET COLOR

ALL LEGALS, PERMITS, APPROVEMENTS AND PLANS INDICATED HEREON ARE THE PROPERTY OF design kollaborative architects / planners, inc. ANY REPRODUCTION OR TRANSMISSION OF THIS DOCUMENT WITHOUT THE WRITTEN PERMISSION OF design kollaborative architects / planners, inc. IS STRICTLY PROHIBITED. THIS DOCUMENT IS THE PROPERTY OF design kollaborative architects / planners, inc. AND IS NOT TO BE REPRODUCED, COPIED, OR TRANSMITTED IN ANY FORM OR BY ANY MEANS, ELECTRONIC OR MECHANICAL, INCLUDING PHOTOCOPYING, RECORDING, OR BY ANY INFORMATION STORAGE AND RETRIEVAL SYSTEM. WITHOUT THE WRITTEN PERMISSION OF design kollaborative architects / planners, inc. ANY REPRODUCTION OR TRANSMISSION OF THIS DOCUMENT WITHOUT THE WRITTEN PERMISSION OF design kollaborative architects / planners, inc. IS STRICTLY PROHIBITED.

PH: (954) 941-3324 FAX: (954) 943-7106  
**design kollaborative**  
**architects / planners, inc.**  
 MEMBER AMERICAN INSTITUTE OF ARCHITECTS - AIA 000064  
 61 NE 1ST STREET, SUITE 2, POMPANO BEACH, FL 33060

BLAISE MCGINLEY  
 ARCHITECT A003827

**NEW SHELL BUILDING:**  
**ALLIANCE HP MANAGEMENT**  
**SW 27TH AVENUE**  
**POMPANO BEACH, FL 33069**

DATE	03/31/2023	
PERMIT	00/00/00	
CONSTR.	00/00/00	
PROJECT NO.	22003	
BY	REVISIONS	DATE

SHEET NO.  
**A-201**  
 PRINTED: 6/21/2023