

# FOR SALE



4.1± AC Airport Blvd. | Mobile, AL  
2.5± AC Airport Blvd. | Mobile, AL



Allan R. Cameron, Jr.  SIR  
251.751.9553 | [acameron@cre-mobile.com](mailto:acameron@cre-mobile.com)



CRE  
MOBILE  
CRE-MOBILE.COM

# FOR SALE



4.1± AC Airport Blvd. | Mobile, AL  
2.5± AC Airport Blvd. | Mobile, AL



## PROPERTY SIZES

*Site A: 4.1± Acres*

*Site B: 2.5± Acres*



## ZONING

Unzoned, County of Mobile



## BEST USE

Perfect for C-Store Site, QSR, Retail,  
Restaurant Site and More



## FRONTAGE

*Site A: 524±' Frontage on Airport Blvd.*

*Site B: 254±' Frontage on Airport Blvd.*



## UTILITIES

All Utilities Available to Site



## SALES PRICE

Contact Agent for Pricing



## LOCATION ADVANTAGES

### Property Location

Site A is located in the NE quadrant of Airport Blvd. & Eliza Jordan Rd. Site B is located in the NW quadrant of Airport Blvd. & Dykes Rd.



### Conveniently Located

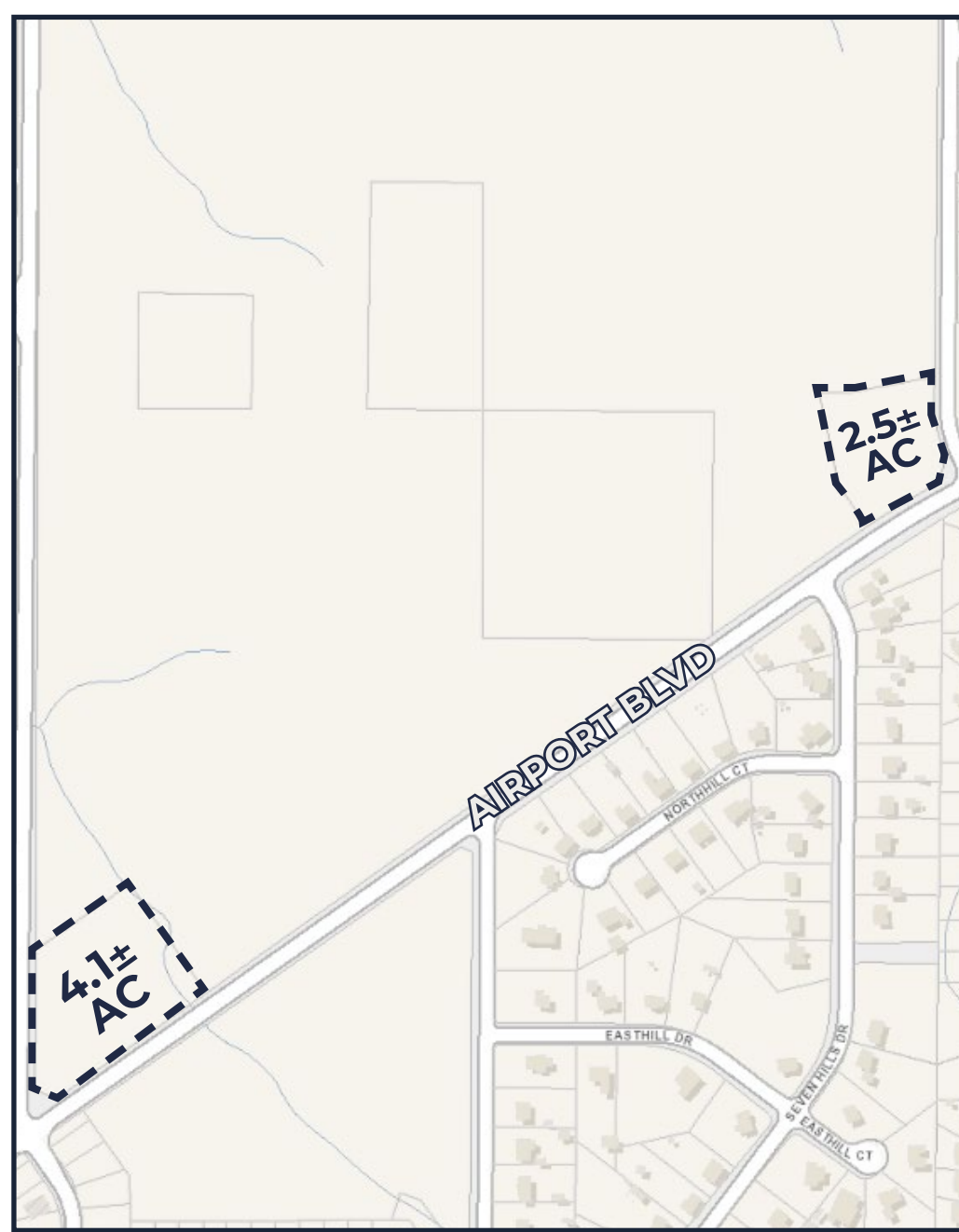
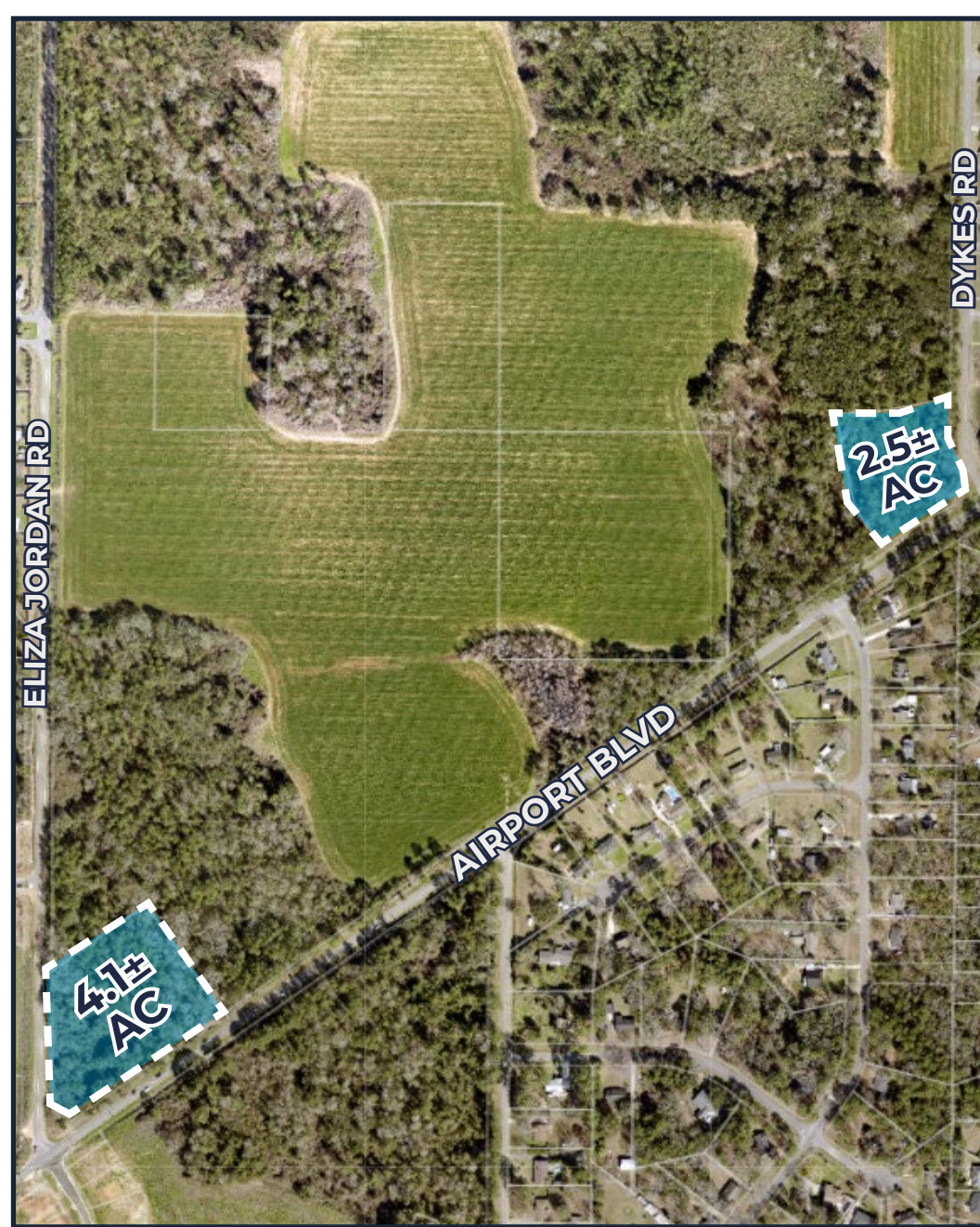
Immediate area features numerous multi-family communities & retail making this an ideal retail location.





## About CRE Mobile

CRE Mobile is a team of seasoned professionals with over 175 years of experience in all facets of real estate with a unique presence as a full-service commercial real estate firm in southwest Alabama. We align our goals with yours because we recognize the future of your asset depends upon our performance to deliver results to you. Success comes from being on the same page—from the big picture down to the small details. We are here to help you — find your space —





**D·R·HORTON**  
*America's Builder*  
**SOLD**  
185± ACRES  
(400± Roof-Top Development)

FOR SALE  
25± AC

**D·R·HORTON**  
*America's Builder*  
**SOLD**

90± ACRES  
(300± Roof-Top Development)

FOR SALE  
4± AC

**FOR SALE**  
35± ACRES  
**CEFCO**

**D·R·HORTON**  
*America's Builder*  
**SOLD**  
60± ACRES  
(200± Roof-Top Development)



Future Mobile County School  
(40 AC)

**SOLD**  
45± AC  
(100± Roof-Top Development)

**SOLD**  
112± ACRES  
(200± Roof-Top Development)  
**DAMS HOMES**

