

2596-2602 S. ROCHESTER RD.
ROCHESTER HILLS, MICHIGAN



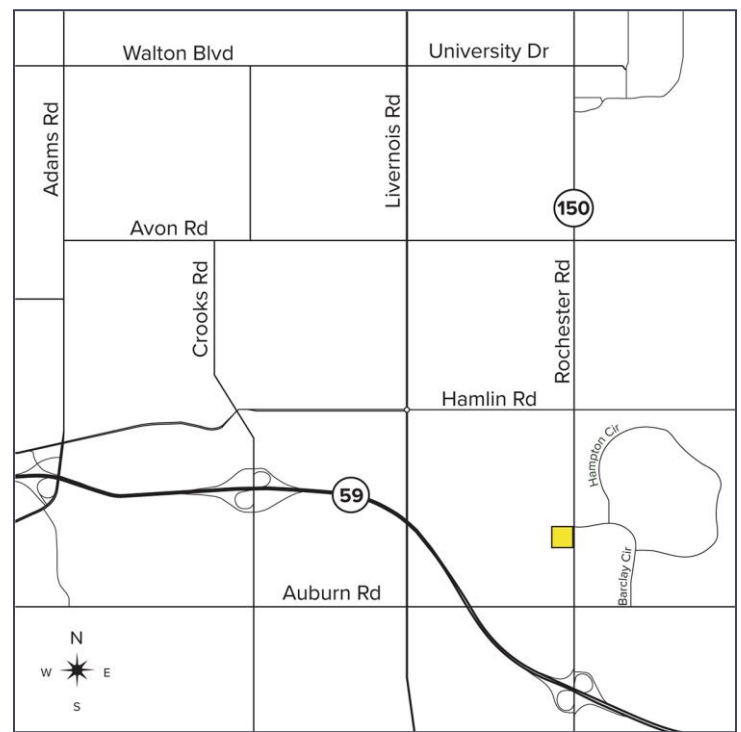
**SIGNATURE
ASSOCIATES**
KNOW SIGNATURE | KNOW RESULTS

RETAIL FOR SUBLEASE
3,600 Square Feet Available



PROPERTY FEATURES

- 3,600 square feet available
- Health club/fitness space
- Join 7-Eleven, Tee Times, Jersey Mike's Subs & Churchill's
- Confidential – please contact broker for more details
- Lease Rate: \$26.50/sq. ft. Gross



For more information, please contact:

PETER VANDERKAAY
(248) 359 3837
pvanderkaay@signatureassociates.com

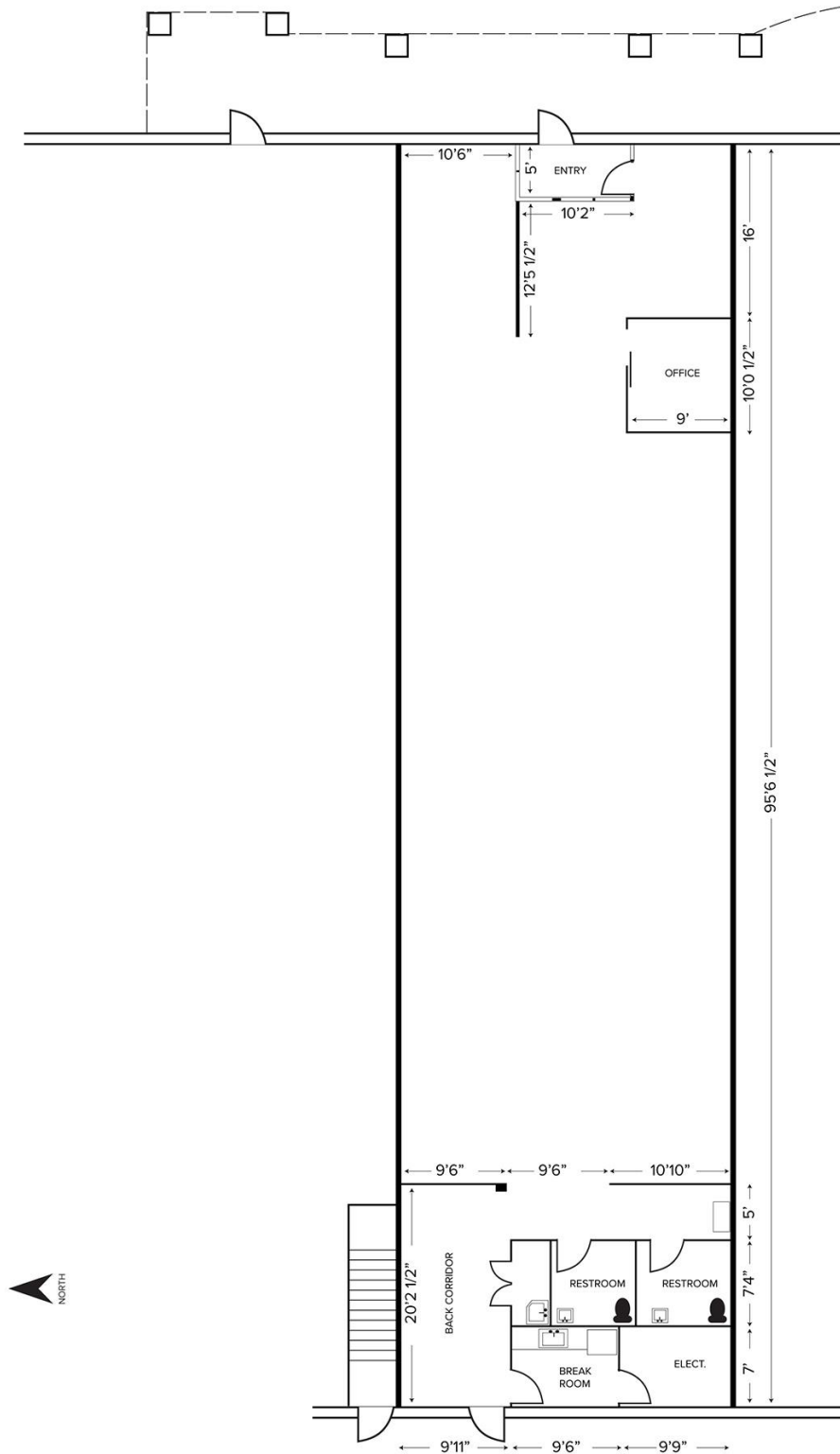
SIGNATURE ASSOCIATES
One Towne Square, Suite 1200
Southfield, MI 48076
www.signatureassociates.com

2596-2602 S. Rochester Rd. – Rochester Hills, Michigan

Retail For Sublease

3,600
Square Feet
AVAILABLE

Floor Plan



For more information, please contact:

PETER VANDERKAAY
(248) 359 3837
pvanderkaay@signatureassociates.com

SIGNATURE ASSOCIATES
One Towne Square, Suite 1200
Southfield, MI 48076
www.signatureassociates.com

2596-2602 S. Rochester Rd. – Rochester Hills, Michigan

Retail For Sublease

**3,600
Square Feet
AVAILABLE**

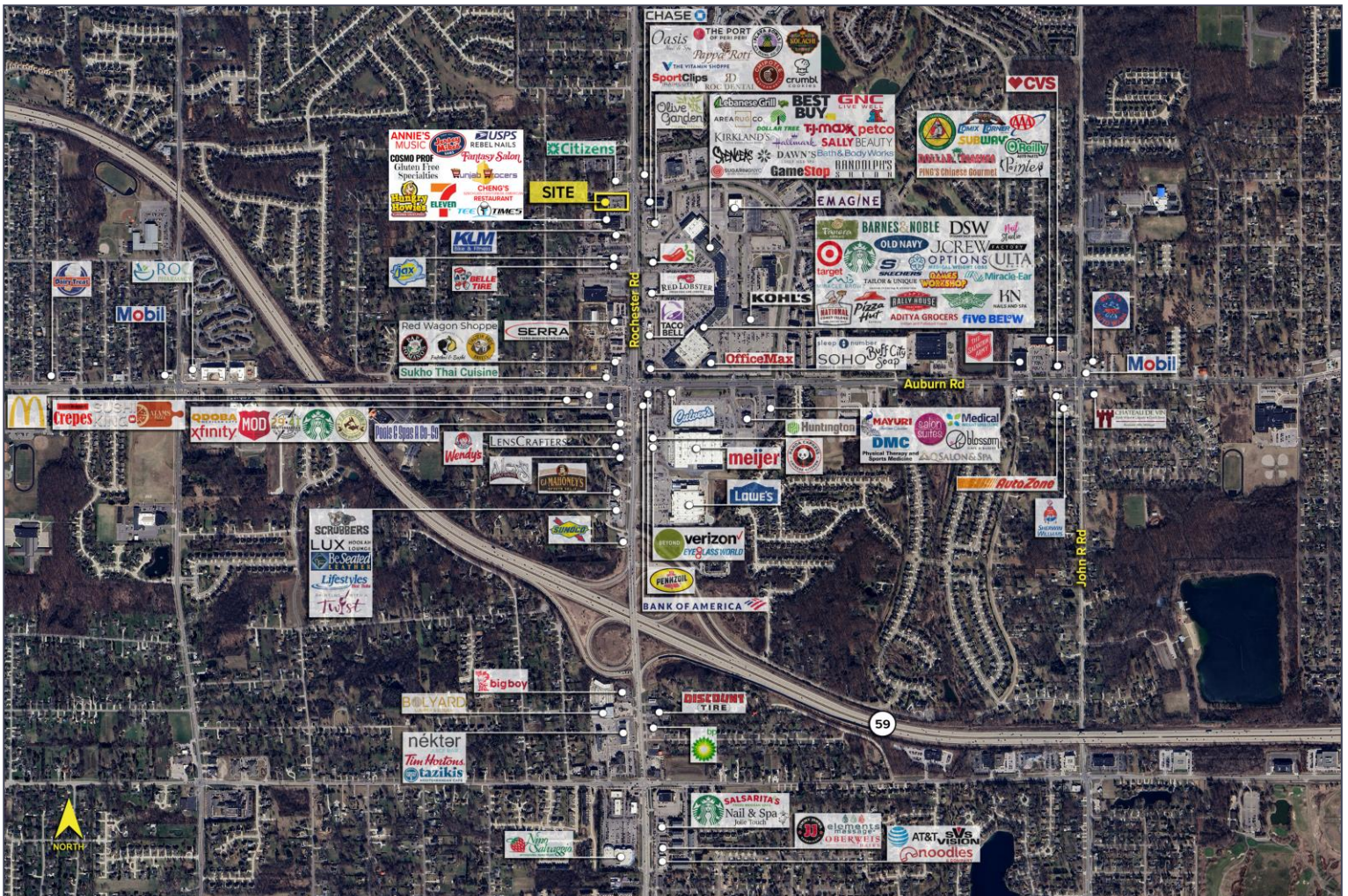


DEMOGRAPHICS

	POPULATION	MED. HH INCOME
1 MILE	10,467	\$120,076
3 MILE	66,123	\$116,587
5 MILE	193,294	\$117,929

TRAFFIC COUNTS (TWO-WAY)

56,823	S. Rochester Rd. S of Wabash Rd.
58,907	S. Rochester Rd. N of Wabash Rd.
5,015	Wabash Rd. W of S. Rochester Rd.
16,840	Wabash Rd. E of S. Rochester Rd.



For more information, please contact:
PETER VANDERKAAY
 (248) 359 3837
 pvanderkaay@signatureassociates.com

SIGNATURE ASSOCIATES
 One Towne Square, Suite 1200
 Southfield, MI 48076
 www.signatureassociates.com

Information is subject to verification and no liability for errors or omissions is assumed. Price is subject to change and listing withdrawal.