

TURNPIKE LOGISTICS CENTER

West Palm Beach, FL

EXCELLENT LOCATION | TREMENDOUS VISIBILITY



PROPERTY HIGHLIGHTS

- ±27,972 SF Available with ±1,600 SF Spec Office
- Prime Location with ±2,000 ft of frontage on Florida's Turnpike
- Direct on-ramp access to Florida's Turnpike as well as close proximity to multiple I-95 interchanges
- Dock and Grade Level Loading
- 32' Clear Height
- ESFR Fire Sprinklers
- Hurricane Impact Glass
- Tilt-Wall Construction
- 53'4" x 42' Column Spacing

ROBERT SMITH
Executive Vice President
+1 561 707 5558
robert.c.smith@cbre.com

KIRK NELSON
Executive Vice President
+1 561 716 9936
kirk.nelson@cbre.com

CBRE

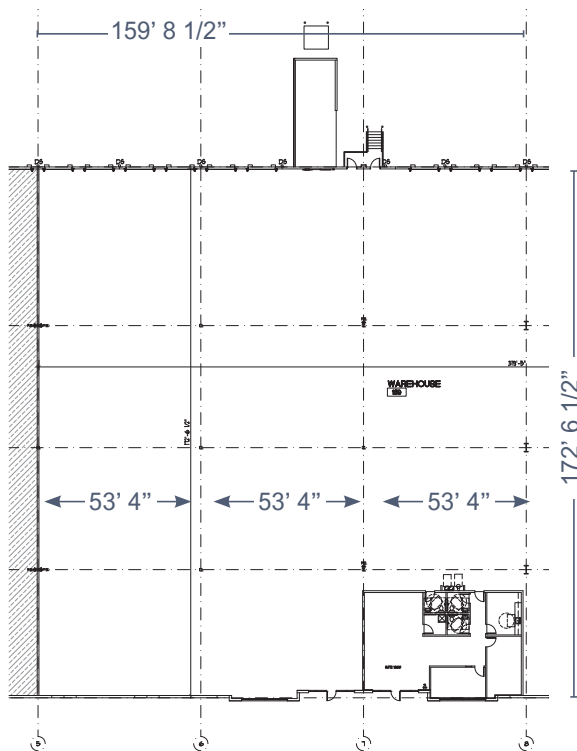
Dalfen
INDUSTRIAL

TURNPIKE LOGISTICS CENTER

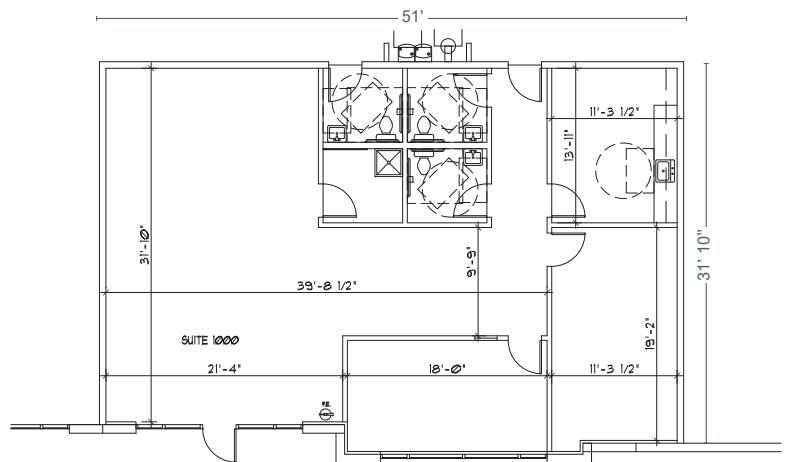
West Palm Beach, FL



FULL SPACE PLAN



OFFICE SPACE PLAN



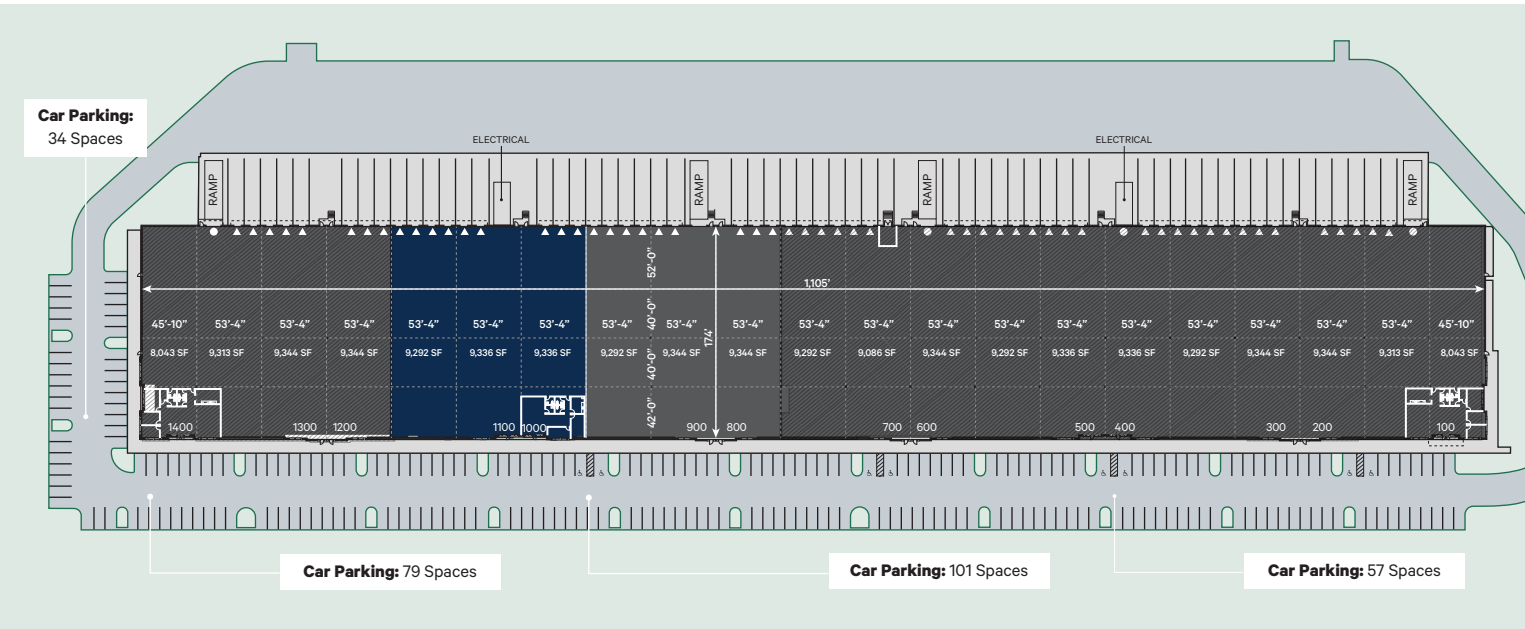
±27,972 SF Total with ±1,600 SF Speculative Office

TURNPIKE LOGISTICS CENTER

West Palm Beach, FL



BUILDING 2 - OVERALL

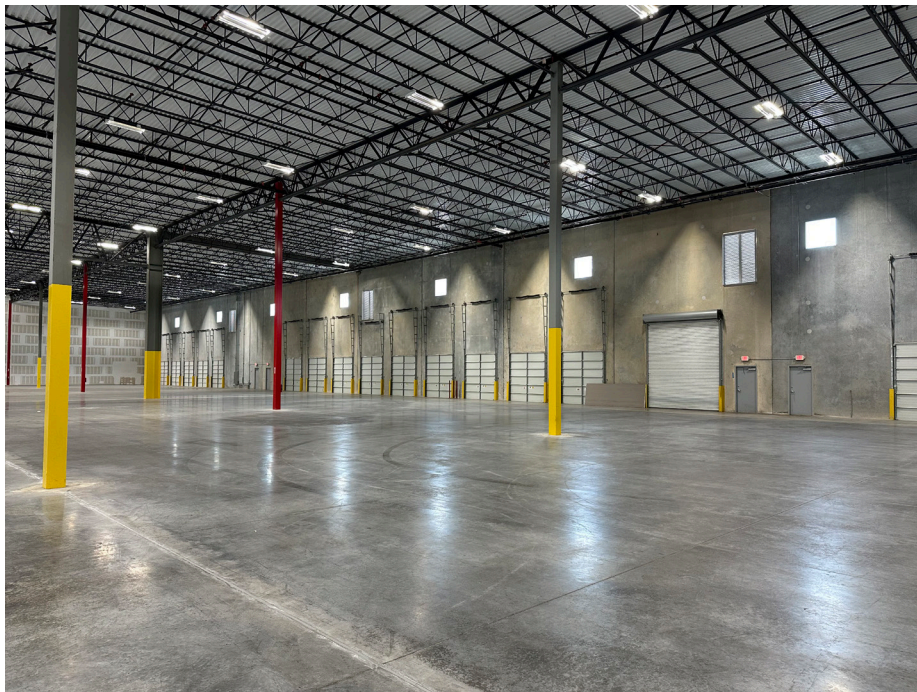


TURNPIKE LOGISTICS CENTER

West Palm Beach, FL



INTERIOR PHOTOS



ROBERT SMITH
Executive Vice President
+1 561 707 5558
robert.c.smith@cbre.com

KIRK NELSON
Executive Vice President
+1 561 716 9936
kirk.nelson@cbre.com

CBRE

Dalfen
INDUSTRIAL

CBRE © 2024 All Rights Reserved. All information included in this letter/proposal pertaining to CBRE—including but not limited to its operations, employees, technology and clients—is proprietary and confidential and supplied with the understanding that such information will be held in confidence and not disclosed to any third party without CBRE's prior written consent. This letter/proposal is intended solely as a preliminary expression of general intentions, is for discussion purposes only, and does not create any agreement or obligation by CBRE to negotiate or continue negotiations. CBRE shall have no contractual obligations with respect to the matters referred to herein unless and until a definitive, fully executed agreement has been delivered by the parties. Prior to delivery of a definitive executed agreement, and without any liability to the other party, either party may (1) propose different terms from those summarized herein, (2) enter into negotiations with other parties and/or (3) unilaterally terminate all negotiations with the other party hereto.