

FOR LEASE

9033 RED BRANCH ROAD
Columbia, Maryland 21045

NEWMARK



PROPERTY INFORMATION

Availability: 10,442 SF

Clear Height: 18'

Loading: 2 Dock Door

Fire Suppression: Wet Sprinkler System

Power: 277/480v 3Phase (800 amps currently available)

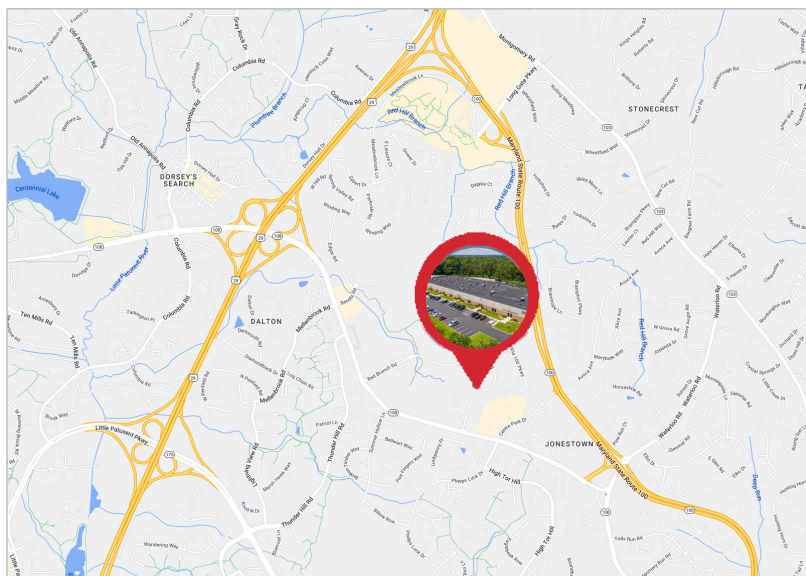
Truck Court: 115'-180'

Zoning: NT

Parking: 3.45/1,000 SF

PROPERTY HIGHLIGHTS

- Immediate access to Route 100, 29 & I-95
- Oakland Ridge Business Park
- Conditioned warehouse



One East Pratt Street, Suite 805 Baltimore, MD 21202

The information contained herein has been obtained from sources deemed reliable, but has not been verified and no guarantee, warranty or representation, either express or implied, is made with respect to such information. Terms of sale or lease and availability are subject to change or withdrawal without notice.

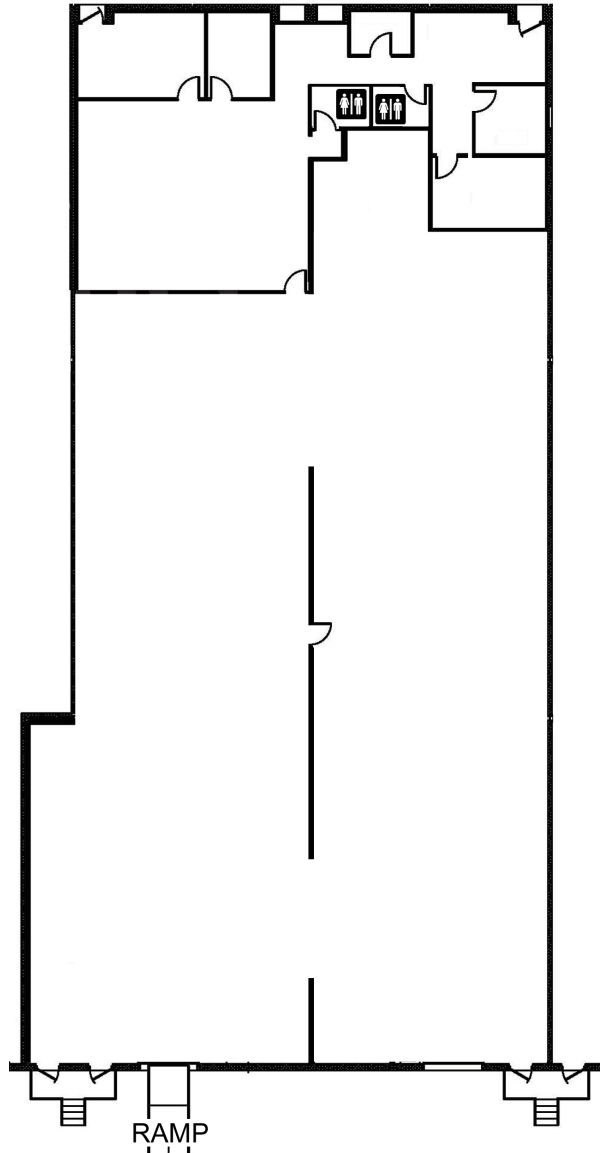
nrmk.com

FOR LEASE

NEWMARK

9033 RED BRANCH ROAD
Columbia, MD 21045

AVAILABLE **10,442 SF**



FOR LEASING INFORMATION:

Brian Kruger
Senior Managing Director
410.625.4211
brian.kruger@nmrk.com

Thomas Hinder
Director
t 410.844.4010
thomas.hinder@nmrk.com

Erik Evans
Associate Director
410.844.4003
erik.evans@nmrk.com

One East Pratt Street, Suite 805 Baltimore, MD 21202

nmrk.com

The information contained herein has been obtained from sources deemed reliable, but has not been verified and no guarantee, warranty or representation, either express or implied, is made with respect to the information. Terms of sale or lease and availability are subject to change or withdrawal without notice.