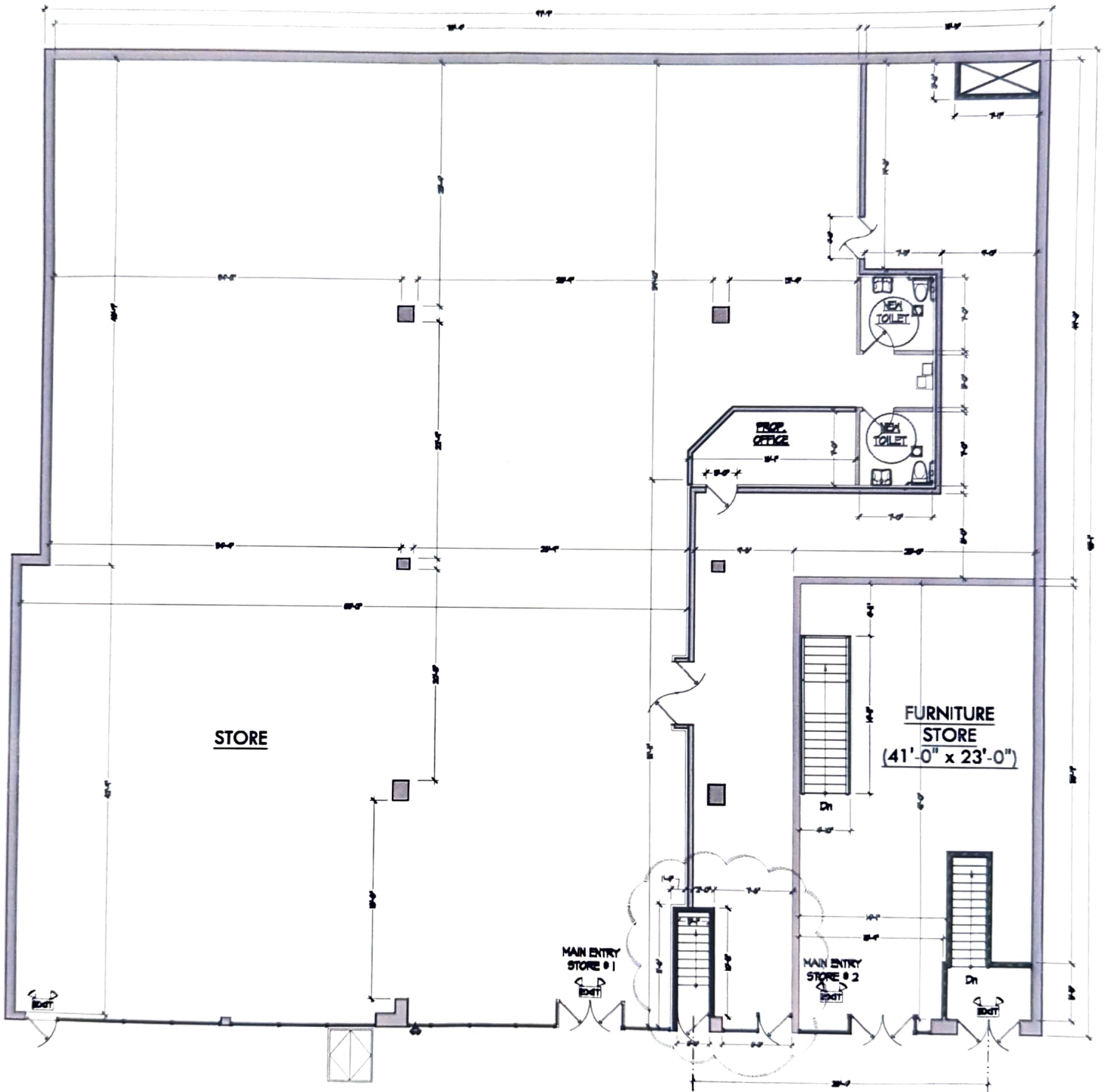


Bronx, NY  
#709435  
APPROVED JG  
9/30/14



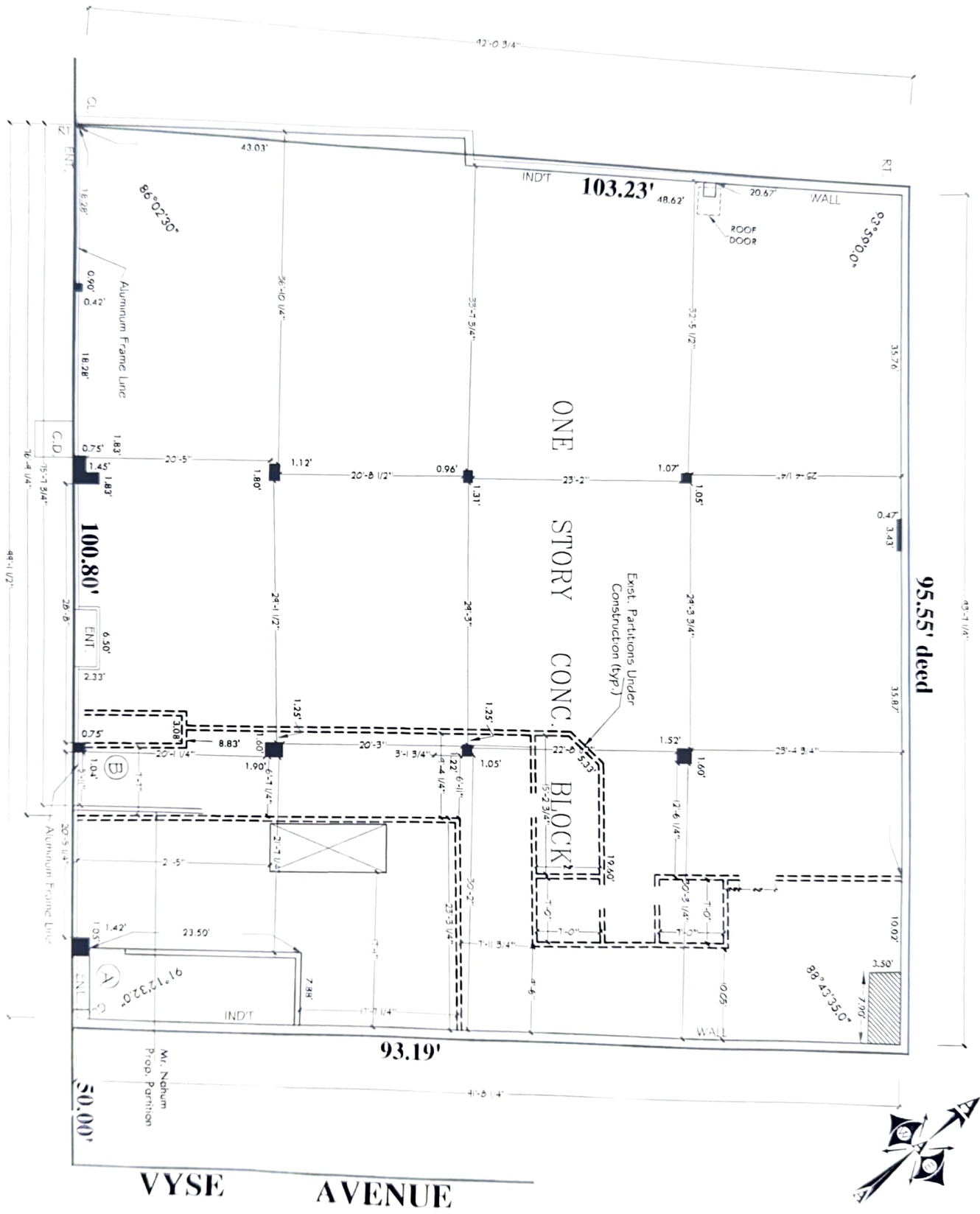
GROUND FLOOR PLAN  
N.T.S.

E TREMONT AVE.

CONCRETE  
STEEL FRAMING  
STEEL FOUND. CONCR.

SIDEWALK  
WATER

STEEL FRAMING  
STEEL FOUND. CONCR.



95.55' decd

VYSE AVENUE

