

149

MAUJER STREET WILLIAMSBURG, BROOKLYN

Between Manhattan & Graham Avenues

COMMUNITY FACILITY FOR LEASE

APPROXIMATE SIZE

Space A: 1,759 SF
Space B: 4,674 SF

Entire Second Floor: 6,433 SF

ASKING RENT

Space A: \$6,000/Month
Space B: \$10,000/Month

Entire Second Floor: \$13,000/Month

TERM

Negotiable

POSSESSION

Immediate

COMMENTS

- A mix of raw and move-in-ready spaces
- Can be leased separately or together
- Elevator access
- Designated entrance
- High ceilings
- Windows throughout

NEIGHBORS

- Willy B • Lucy's Vietnamese • Crystal Lake
- McDonald's • Crystal Deli • Chase • Tuffet
- Alzanam Grocery • Sun Win Hardware

TRANSPORTATION



PROPERTY INFORMATION

JAMES FAMULARO
President

JOSEPH HARARY
Associate
212.468.5978
jharary@meridiancapital.com

SHAYA KATZ
Associate
212.468.5991
shaya.katz@meridiancapital.com



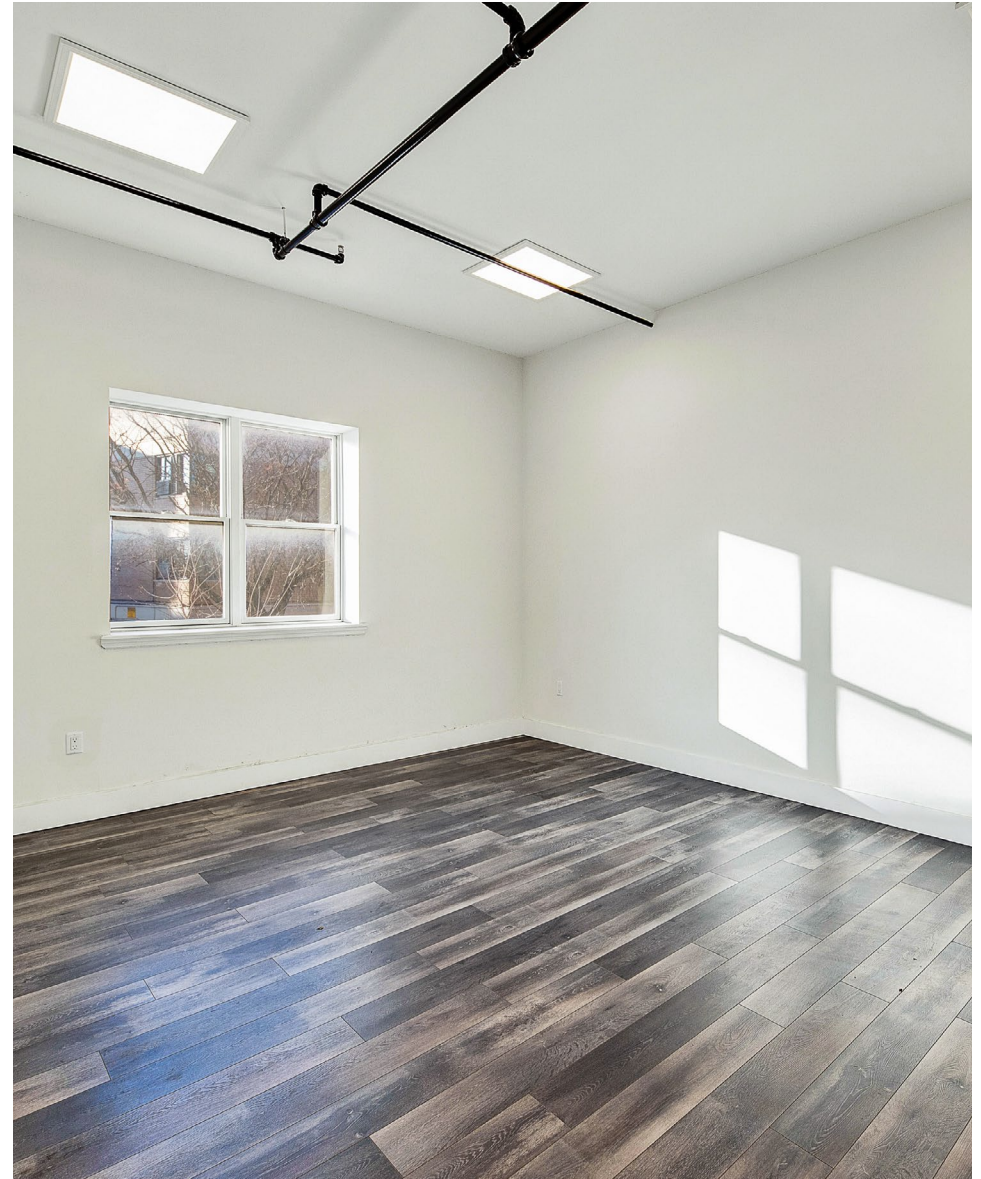
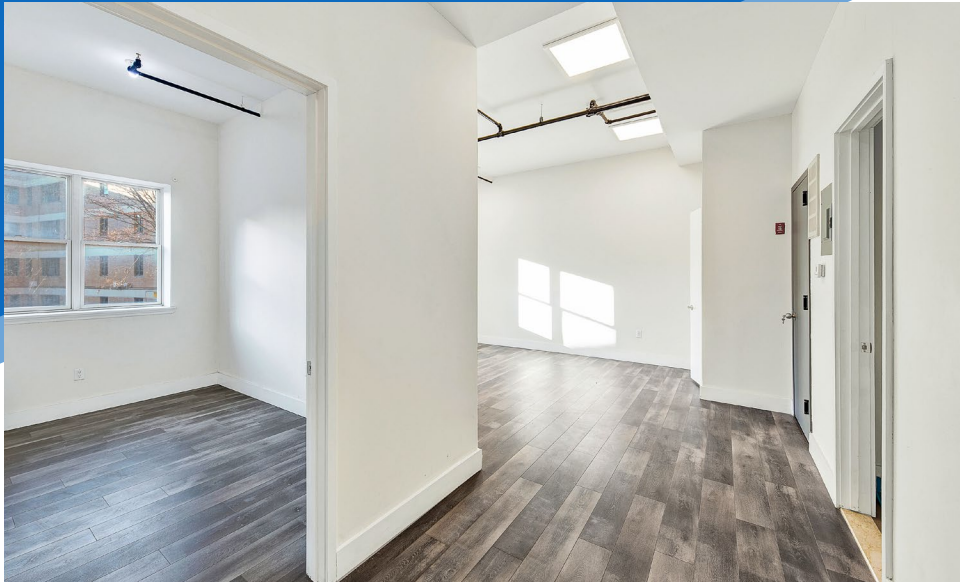
MERIDIAN
RETAIL LEASING

All information supplied is from sources deemed reliable and is furnished subject to errors, omissions, modifications, removal of the listing from sale or lease, and to any listing conditions, including the rates and manner of payment of commissions for particular offerings imposed by Meridian Capital Group. This information may include estimates and projections prepared by Meridian Capital Group with respect to future events, and these future events may or may not actually occur. Such estimates and projections reflect various assumptions concerning anticipated results. While Meridian Capital Group believes these assumptions are reasonable, there can be no assurance that any of these estimates and projections will be correct. Therefore, actual results may vary materially from these estimates and projections. Any square footage dimensions set forth are approximate.

149 MAUJER STREET

WILLIAMSBURG, BROOKLYN | Between Manhattan and Graham Avenues

COMMUNITY FACILITY FOR LEASE



INTERIOR | SPACE A

JAMES FAMULARO
President

JOSEPH HARARY
Associate
212.468.5978
jharary@meridiancapital.com

SHAYA KATZ
Associate
212.468.5991
shaya.katz@meridiancapital.com



MERIDIAN
RETAIL LEASING

All information supplied is from sources deemed reliable and is furnished subject to errors, omissions, modifications, removal of the listing from sale or lease, and to any listing conditions, including the rates and manner of payment of commissions for particular offerings imposed by Meridian Capital Group. This information may include estimates and projections prepared by Meridian Capital Group with respect to future events, and these future events may or may not actually occur. Such estimates and projections reflect various assumptions concerning anticipated results. While Meridian Capital Group believes these assumptions are reasonable, there can be no assurance that any of these estimates and projections will be correct. Therefore, actual results may vary materially from these estimates and projections. Any square footage dimensions set forth are approximate.



INTERIOR | SPACE B

JAMES FAMULARO
President

JOSEPH HARARY
Associate
212.468.5978
jharary@meridiancapital.com

SHAYA KATZ
Associate
212.468.5991
shaya.katz@meridiancapital.com



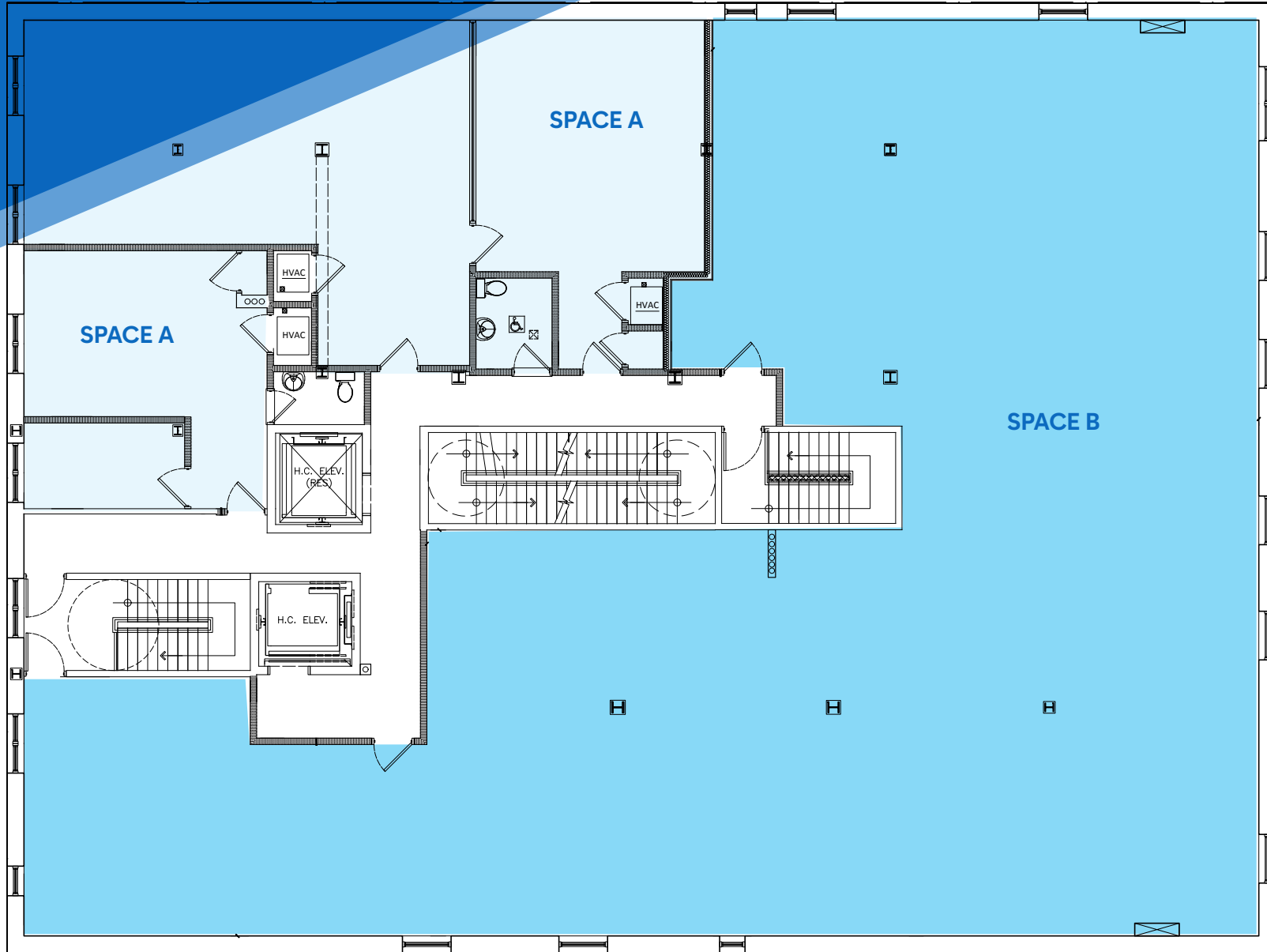
MERIDIAN
RETAIL LEASING

149 MAUJER STREET

WILLIAMSBURG, BROOKLYN | Between Manhattan and Graham Avenues

COMMUNITY FACILITY FOR LEASE

FLOOR PLAN



JAMES FAMULARO
President

JOSEPH HARARY
Associate
212.468.5978
jharary@meridiancapital.com

SHAYA KATZ
Associate
212.468.5991
shaya.katz@meridiancapital.com



MERIDIAN
RETAIL LEASING

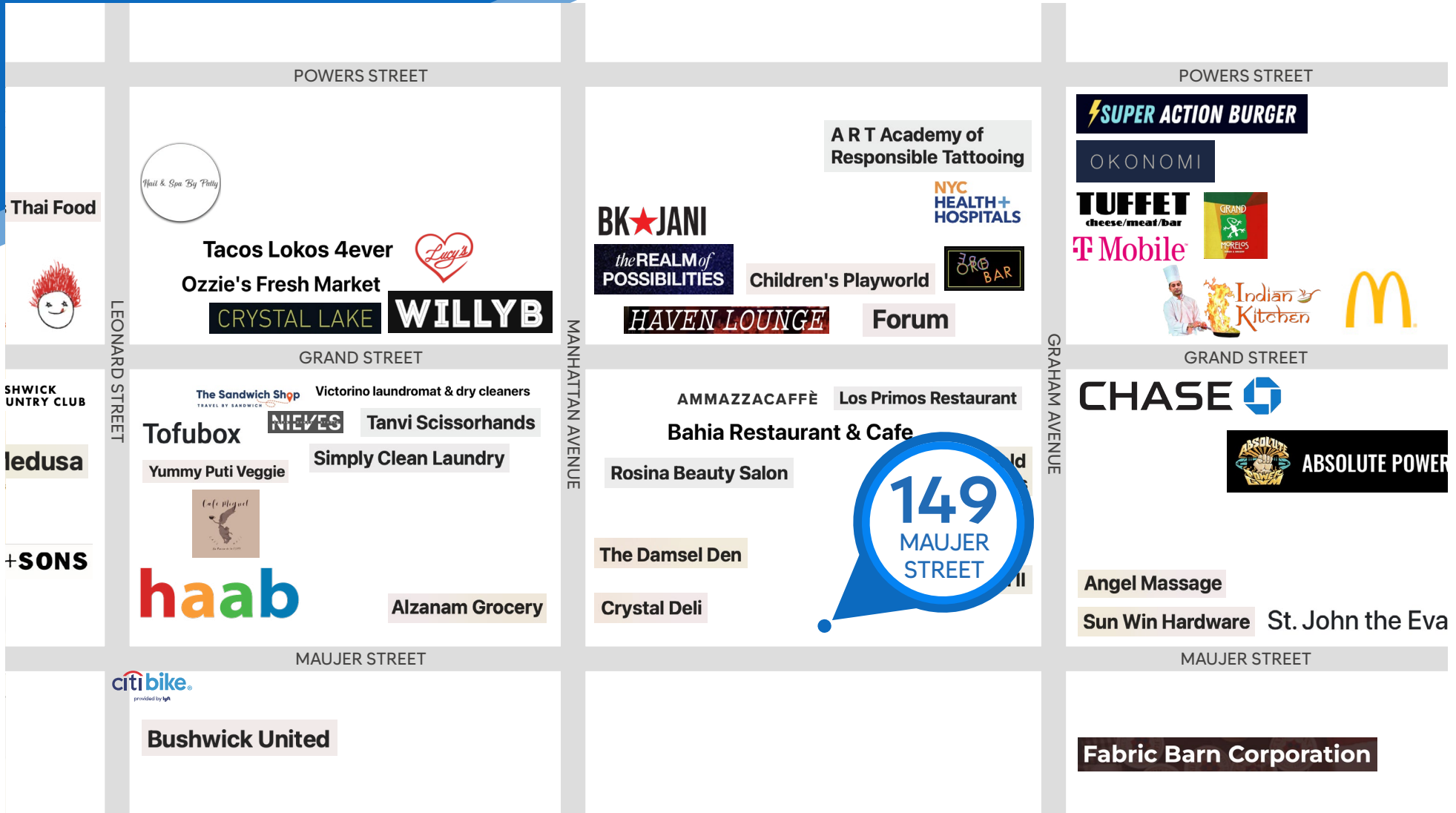
All information supplied is from sources deemed reliable and is furnished subject to errors, omissions, modifications, removal of the listing from sale or lease, and to any listing conditions, including the rates and manner of payment of commissions for particular offerings imposed by Meridian Capital Group. This information may include estimates and projections prepared by Meridian Capital Group with respect to future events, and these future events may or may not actually occur. Such estimates and projections reflect various assumptions concerning anticipated results. While Meridian Capital Group believes these assumptions are reasonable, there can be no assurance that any of these estimates and projections will be correct. Therefore, actual results may vary materially from these estimates and projections. Any square footage dimensions set forth are approximate.

149 MAUJER STREET

WILLIAMSBURG, BROOKLYN | Between Manhattan and Graham Avenues

COMMUNITY FACILITY FOR LEASE

NEIGHBORS



JAMES FAMULARO
President

JOSEPH HARARY
Associate
212.468.5978
jharary@meridiancapital.com

SHAYA KATZ
Associate
212.468.5991
shaya.katz@meridiancapital.com



MERIDIAN
RETAIL LEASING

All information supplied is from sources deemed reliable and is furnished subject to errors, omissions, modifications, removal of the listing from sale or lease, and to any listing conditions, including the rates and manner of payment of commissions for particular offerings imposed by Meridian Capital Group. This information may include estimates and projections prepared by Meridian Capital Group with respect to future events, and these future events may or may not actually occur. Such estimates and projections reflect various assumptions concerning anticipated results. While Meridian Capital Group believes these assumptions are reasonable, there can be no assurance that any of these estimates and projections will be correct. Therefore, actual results may vary materially from these estimates and projections. Any square footage dimensions set forth are approximate.