

For Lease

±7,919 SF Industrial Building



12010 Bloomfield Avenue, Santa Fe Springs, California

Contact Us | Visit Us Online
562.692.2200 | interpresrealty.com





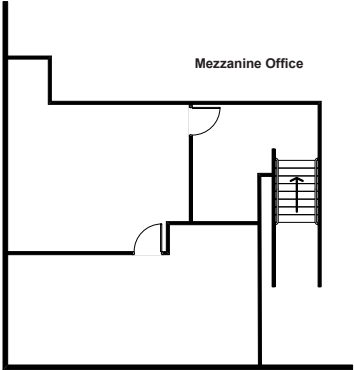
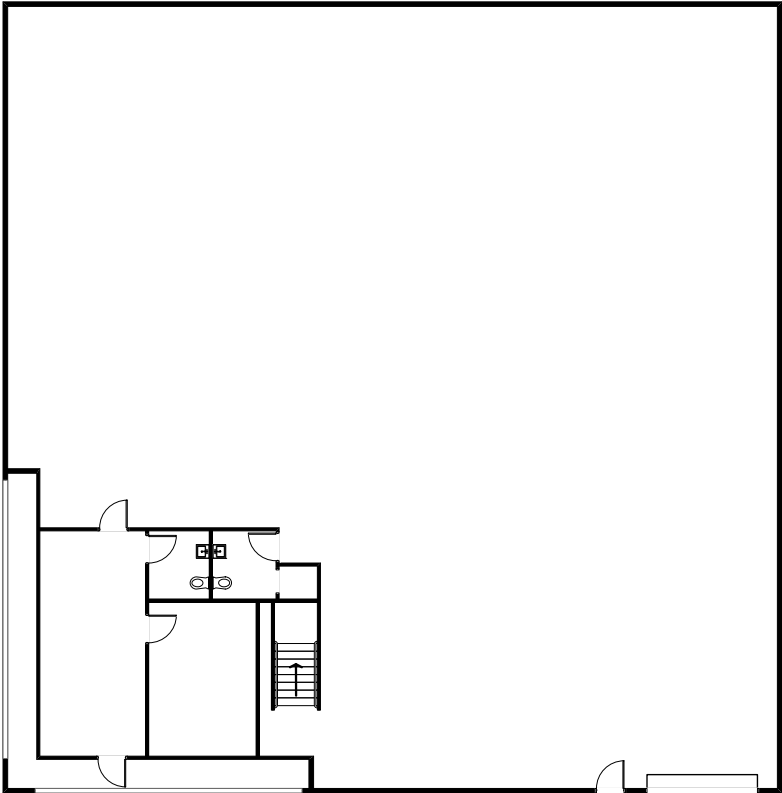
interPres Commercial Realty is pleased to present an excellent opportunity to Lease 12010 Bloomfield Avenue, Santa Fe Springs, CA. The property is an approximate 7,919 SF industrial building, located within the highly desirable area of North Santa Fe Springs. It features ~625 SF of ground floor office space, ~695 SF mezzanine built-out with office, an oversized (14'x14') ground level loading door, 22' warehouse clearance, and calculated fire sprinklers. The property is ideal for light industrial uses, sales/service, assembly, or manufacturing firms, with excellent identity on a major street and easy access to the I-5, 605, and 105 freeways.

Property Type	Mfg/Assembly/Whse
Building Size	7,919 SF
Office	625 SF
Mezzanine	695 SF
Warehouse Height	22' Min
Power	200 A
Sprinklered	Yes
Ground Level Doors	1 (14'x14')
Construction Type	CTU
Year Built	1984
Zoning	M-2





SITE PLAN



Rendering Not to Scale

FOR MORE INFORMATION,
PLEASE CONTACT:

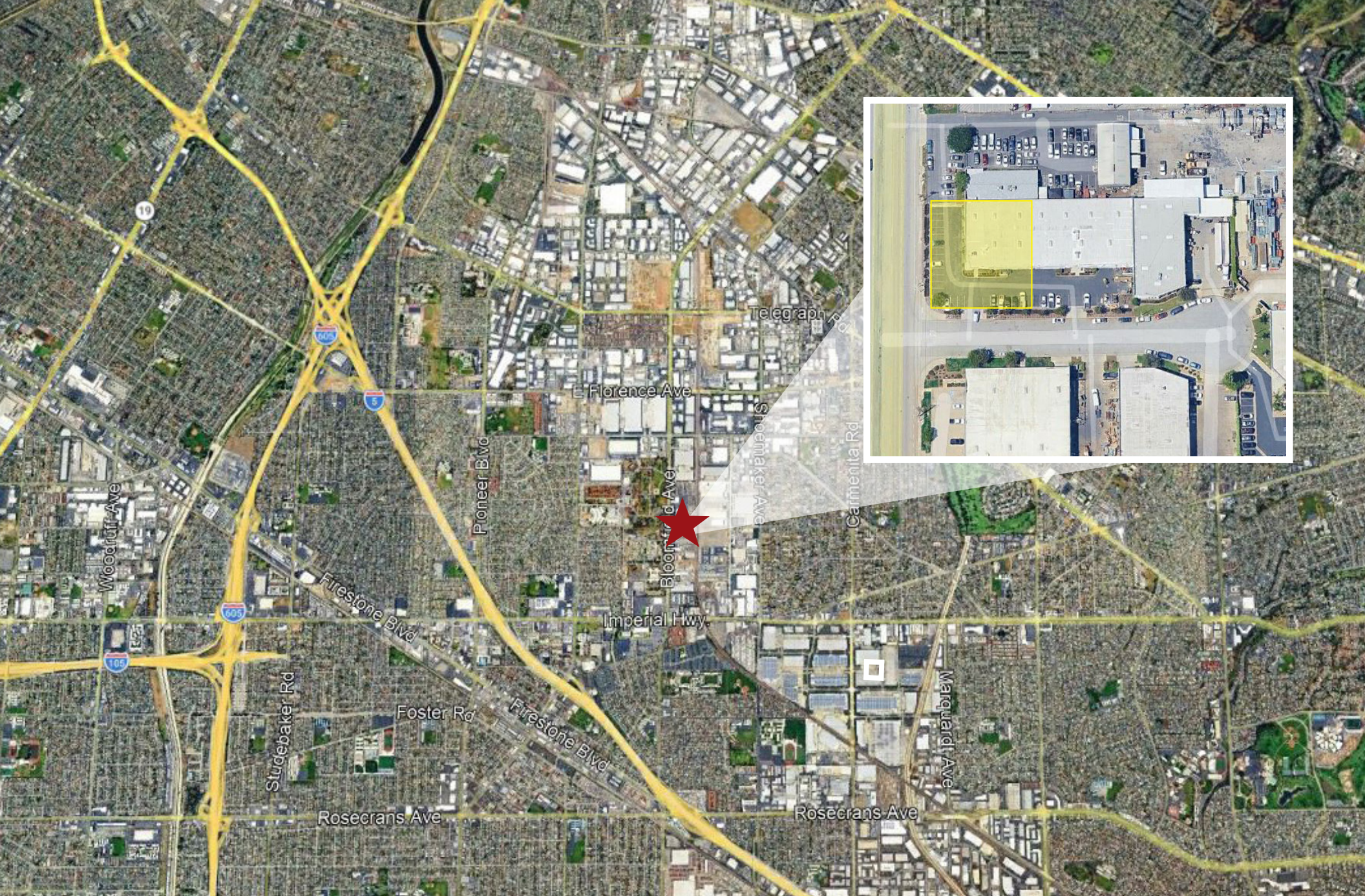
Sandy Gonzalez
Lic. # 01844956
562.469.5331

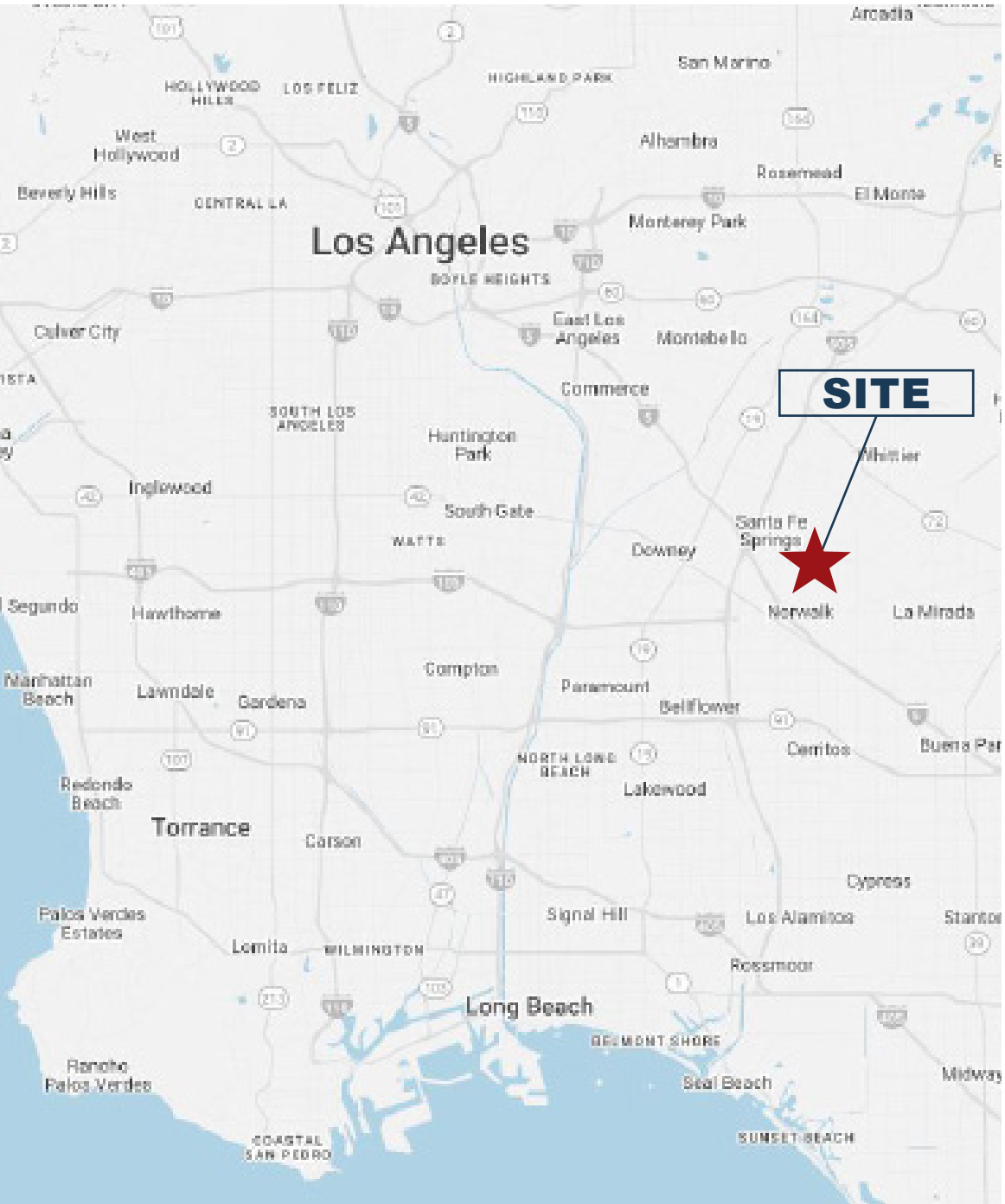
Peter Pistone, SIOR
Lic. # 01007013
213.418.9200



The information contained herein has been obtained from sources we deem reliable. While we have no reason to doubt its accuracy, interPres Commercial Realty makes no representation or warranties. All measurements are approximate and need to be independently verified by a prospective tenant prior to executing a binding contract.







For more information, or to schedule a tour, please contact us.



Peter Pistone
President
213.418.9200 Direct
peterp@interpresrealty.com
BRE Lic. #01007013

Sandy Gonzalez
Associate Vice President
562.469.5331 Direct
sandyg@interpresrealty.com
BRE Lic. #02097966



The information contained herein has been obtained from sources we deem reliable. While we have no reason to doubt its accuracy, we do not guarantee it or make any representations about it. interPres Commercial Realty suggests you perform a careful, independent investigation of the property to determine the suitability of the property for your needs. All measurements and specifications are approximate.

CalBRE #01774875

Contact Us | Visit Us Online
562.692.2200 | interpresrealty.com

CalBRE #01774875

