

# HEAVY INDUSTRIAL LAND

12299 N Lombard St | Portland, OR 97203

FOR SALE



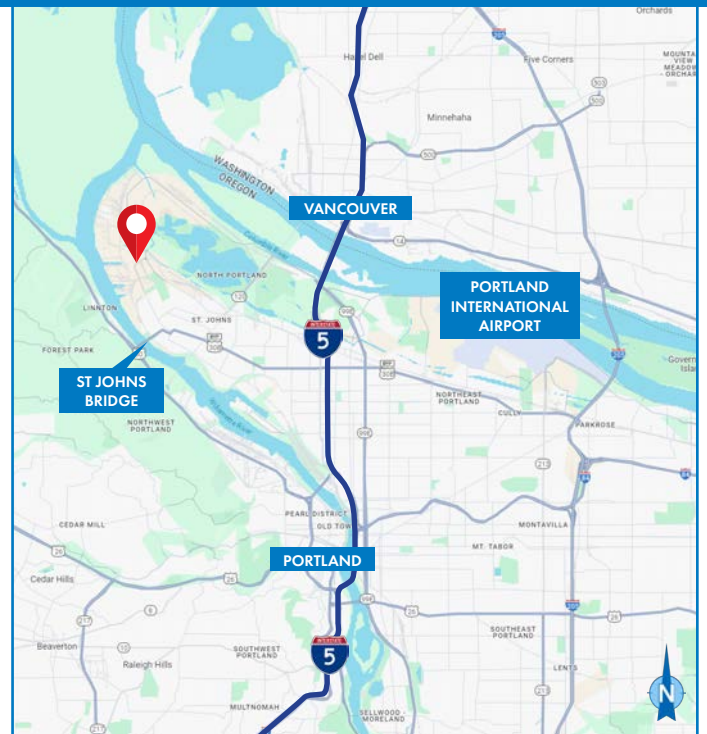
## LAND FOR SALE

### DETAILS

- Land area: ± 2.30 AC (100,188 SF)
- Price: \$1,500,000
- Zoning: Heavy Industrial (I-H)

### FEATURES

- 2.1 miles from the St. Johns Bridge
- Flat and graveled



10.30.2024

For more information or a property tour, please contact:

**GREG NESTING**

503.225.8430

GregN@norris-stevens.com



Information contained herein has been obtained from others and considered to be reliable; however, a prospective purchaser or lessee is expected to verify all information to their own satisfaction.

## Norris & Stevens

INVESTMENT REAL ESTATE SERVICES

900 SW 5th Avenue • 17th Floor • Portland, OR 97204  
503.223.3171 • norris-stevens.com

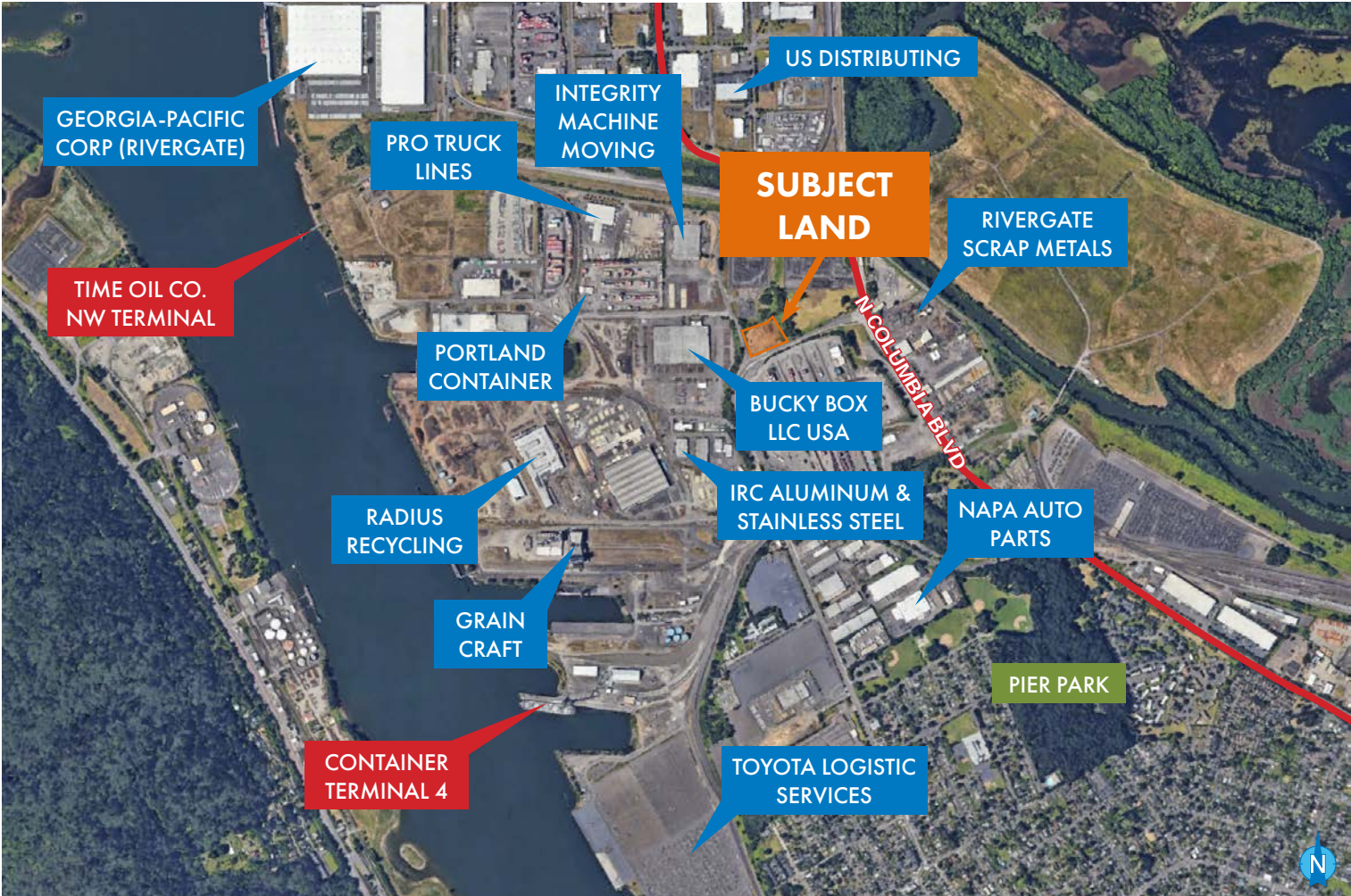


# HEAVY INDUSTRIAL LAND

12299 N Lombard St | Portland, OR 97203

FOR SALE

## LOCATION OVERVIEW



For more information or a property tour, please contact:

**GREG NESTING**  
503.225.8430  
GregN@norris-stevens.com



Information contained herein has been obtained from others and considered to be reliable; however, a prospective purchaser or lessee is expected to verify all information to their own satisfaction.

## Norris & Stevens

INVESTMENT REAL ESTATE SERVICES

900 SW 5th Avenue • 17th Floor • Portland, OR 97204  
503.223.3171 • norris-stevens.com

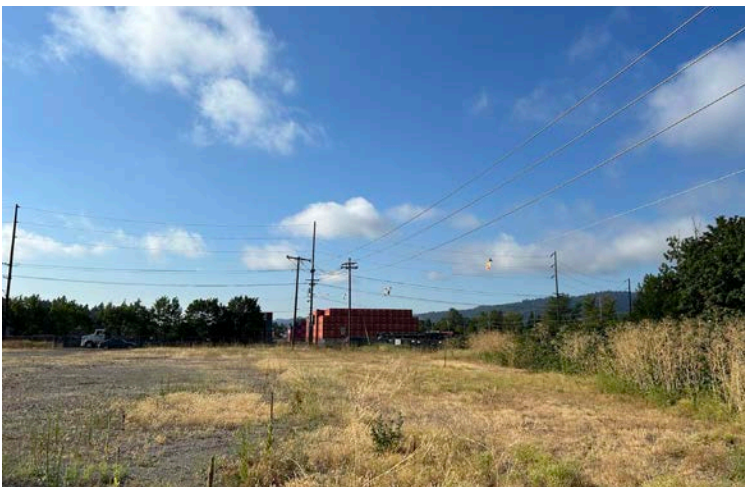
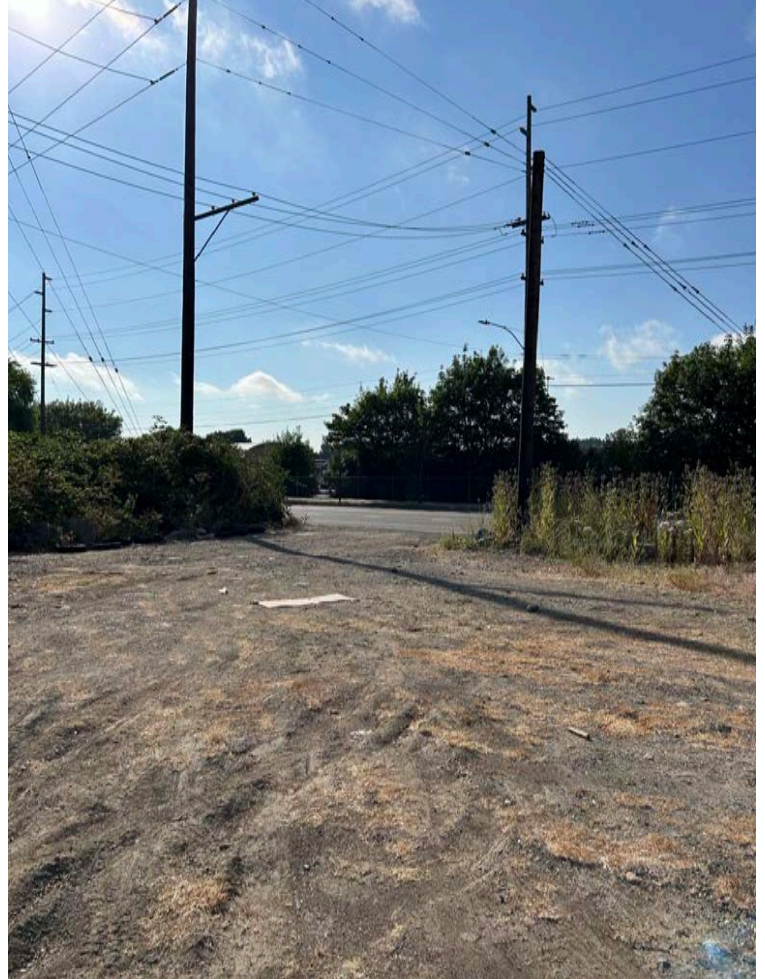


# HEAVY INDUSTRIAL LAND

12299 N Lombard St | Portland, OR 97203

FOR SALE

## PROPERTY PHOTOS



For more information or a property tour, please contact:

**GREG NESTING**

503.225.8430

GregN@norris-stevens.com



Information contained herein has been obtained from others and considered to be reliable; however, a prospective purchaser or lessee is expected to verify all information to their own satisfaction.

## Norris & Stevens

INVESTMENT REAL ESTATE SERVICES

900 SW 5th Avenue • 17th Floor • Portland, OR 97204  
503.223.3171 • [norris-stevens.com](http://norris-stevens.com)