



SOUTH FLORIDA LOGISTICS CENTER **95**

Class A Industrial space
150,000-1,100,000 SF Available Now



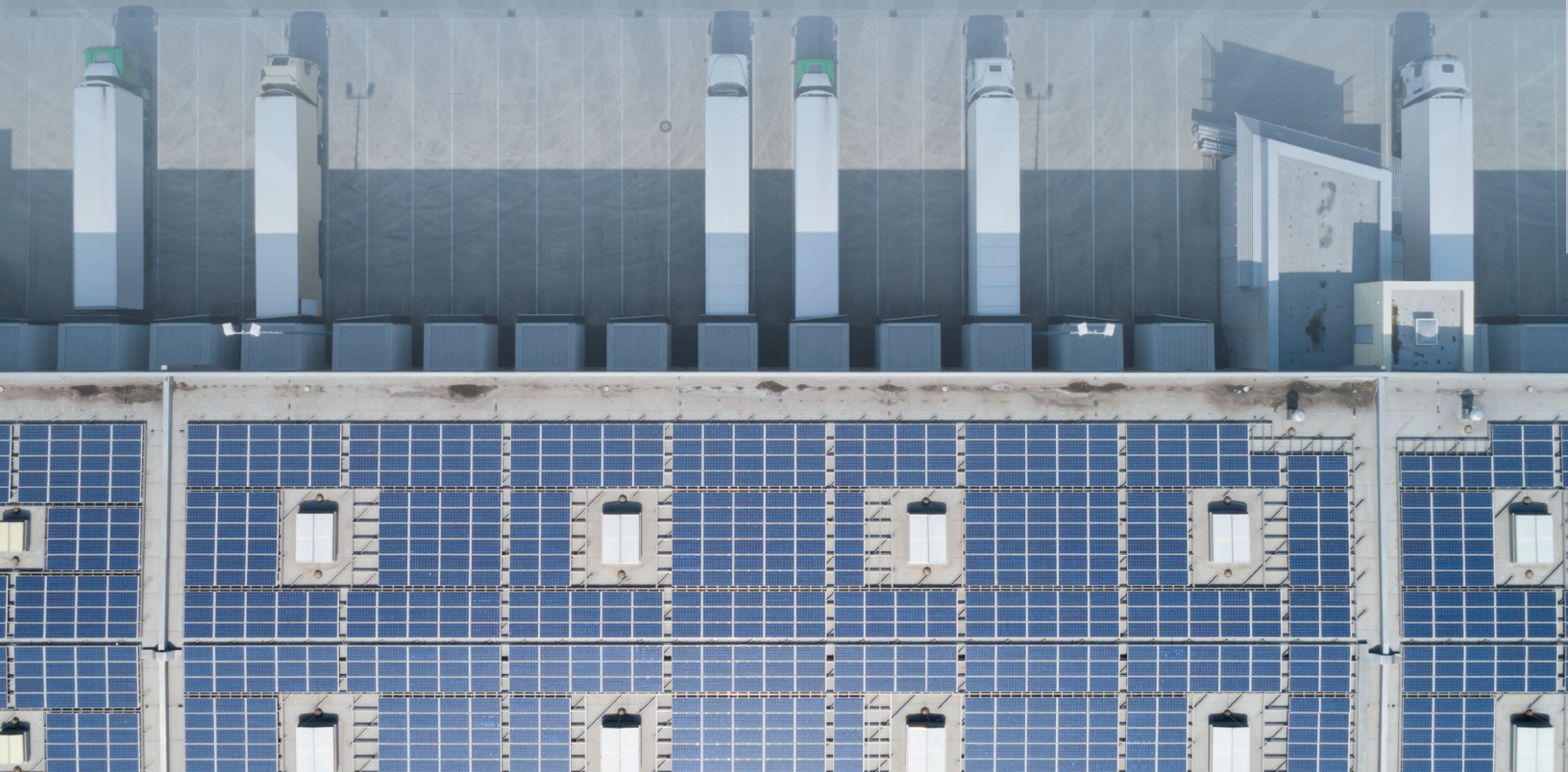
7805 Orange Avenue
Fort Pierce, FL



BUILDING SPECIFICATIONS

	Building 1
Building size	1,114,974 SF
Building dimensions	690' x 1935'
Slab	8" unreinforced slab
Clear height	40'
Bay spacing	56' x 50'
Speed bays	60'
Construction	Tilt-wall
Fire suppression	ESFR
Dock positions/knockouts	58 dock doors, 60 k.o. panels
Electrical	277/480V, 3 phase
Insulation	Non-insulated

SITE PLAN



PROJECT HIGHLIGHTS



LOCATION OVERVIEW



143,096
LABOR FORCE ST. LUCIE COUNTY



6TH
RANKED GROWTH CITY IN U.S. BY UHAUL



3.30%
ST. LUCIE COUNTY UNEMPLOYMENT



3.90%
TRI-COUNTY UNEMPLOYMENT



282,391
LABOR FORCE TRI-COUNTY REGION



44
MEDIAN AGE



Points of interest

Distances to airports:

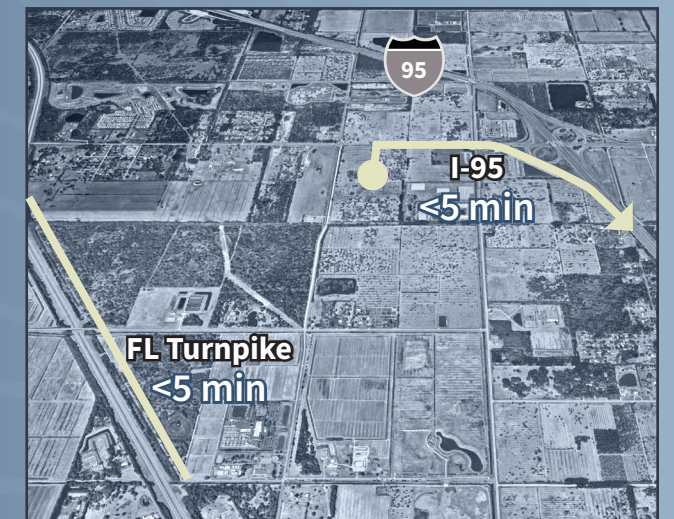
Destination	Miles	Drive times
MIA	125	2hr 2 min
FLL	110	1hr 41 min
PBI	61	1hr
TPA	156	2hr 30 min
MCO	107	1hr 42 min

Distances to ports:

Destination	Miles	Drive times
Port of Palm Beach	61	1 hr
Port Miami	132	1 hr 55 min
Port Everglades	111	1 hr 45 min
Port of Tampa	181	2 hr 40 min
Port Manatee	150	2 hr 50 min

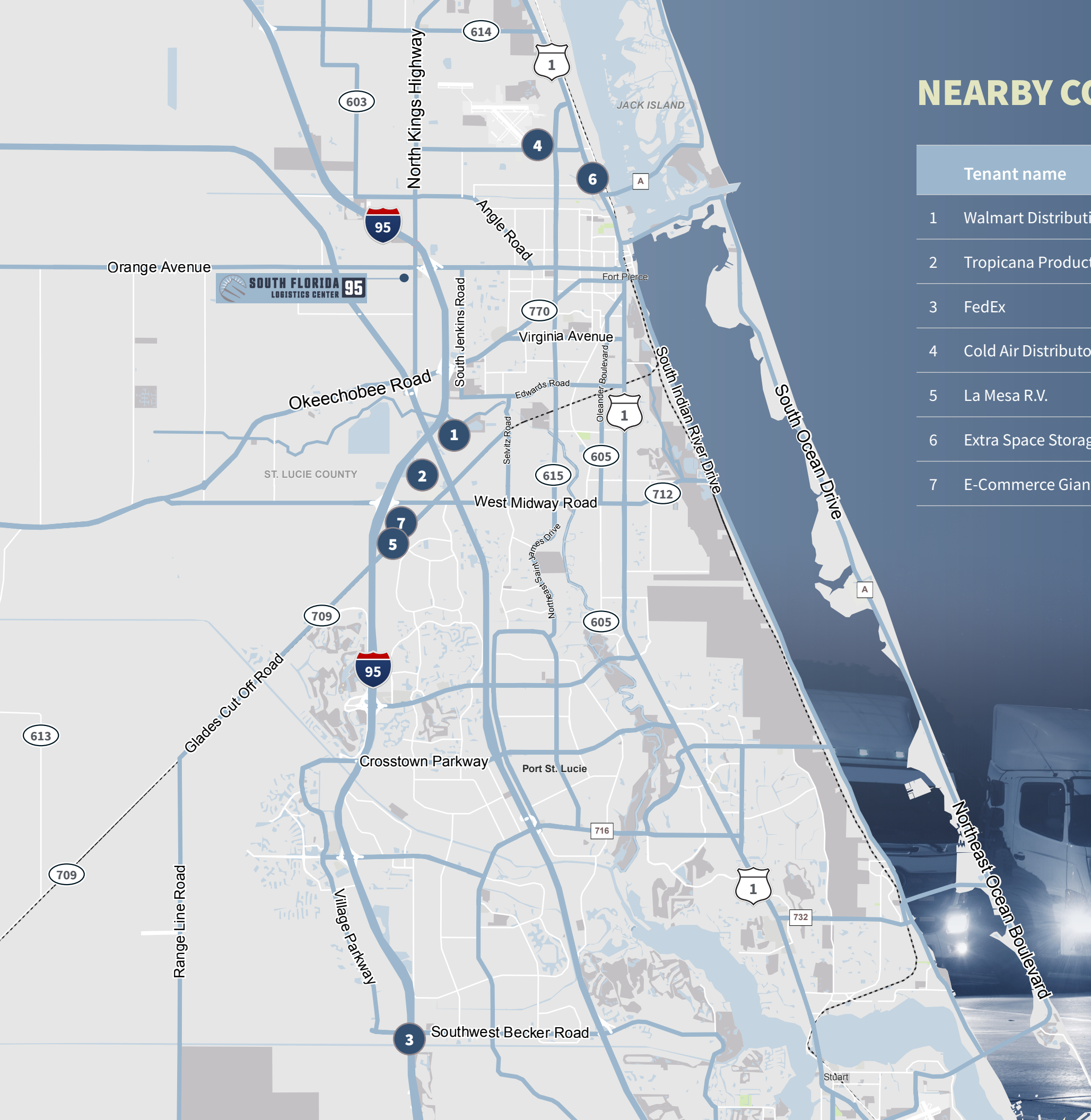


Immediate access to I-95



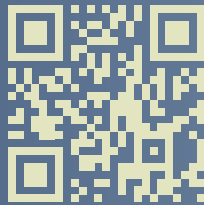
NEARBY CORPORATE NEIGHBORS

Tenant name	Address	City
1 Walmart Distribution Center	4001 S Jenkins Rd	Fort Pierce
2 Tropicana Products Inc	6500 Glades Cut Off Rd	Fort Pierce
3 FedEx	SW Becker Rd	Port Saint Lucie
4 Cold Air Distributors	3053 Industrial 31st St	Fort Pierce
5 La Mesa R.V.	8650 NW LTC Pky	Port Saint Lucie
6 Extra Space Storage	3270 N US 1 Hwy	Fort Pierce
7 E-Commerce Giant	8300 LTC Pkwy	Port Saint Lucie





SOUTH FLORIDA LOGISTICS CENTER **95**



Click or Scan to watch our video

CONTACT US

Sky Groden, SIOR
Executive Managing Director
+1 954 817 0188
sky.groden@jll.com

Jeremy Cain
Senior Vice President
+1 954 899 2480
jeremy.cain@jll.com

Ken Morris, SIOR
Senior Vice President
+1 954 240 4400
ken.morris@jll.com

