

For Sale or Lease
Former Big Lots
28,017 SF

2093 East Florida Avenue
Hemet, CA 92544



LEA CLAY PARK
949-521-7437
lea@axiomra.com
CA DRE License# 01087365

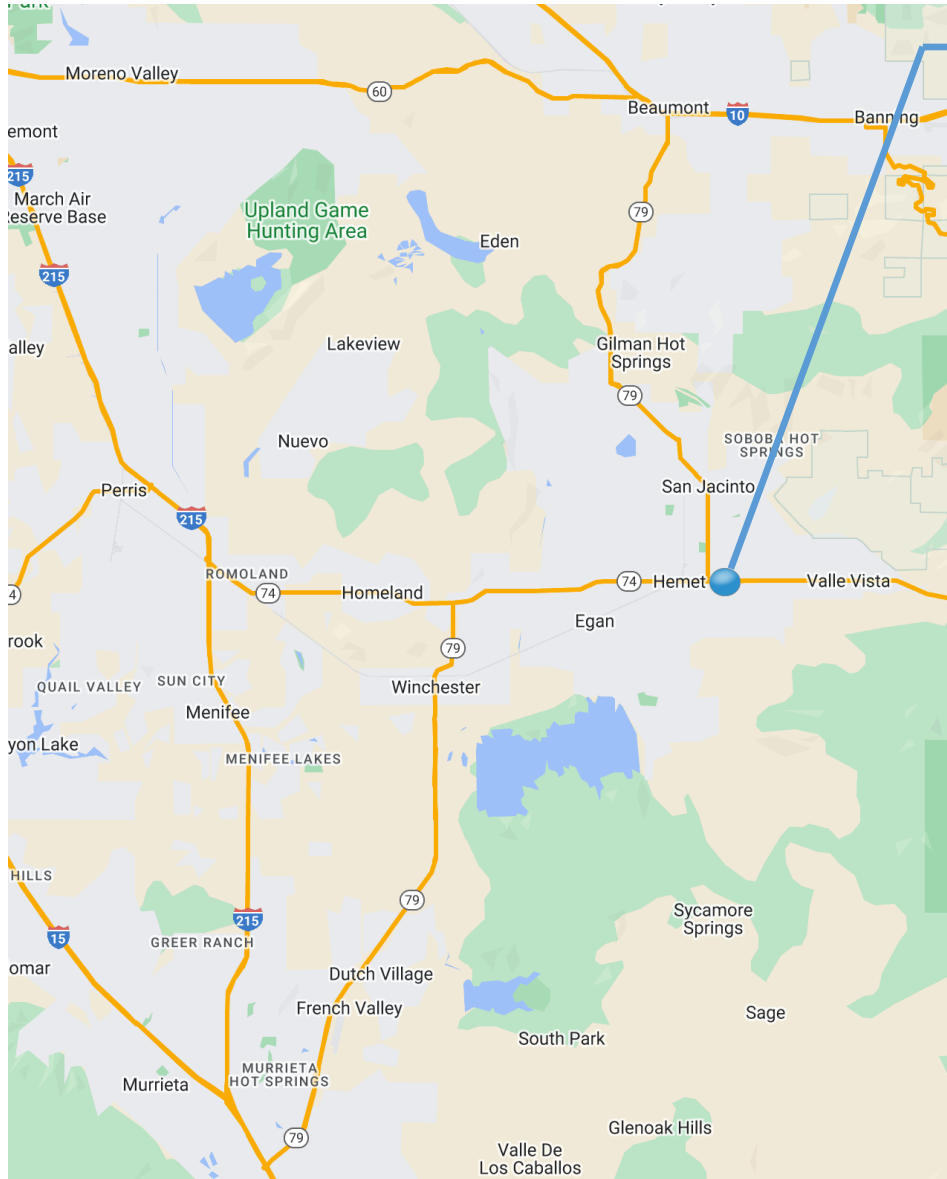
STEPHANIE SKRBIN
949-521-7436
stephanie@axiomra.com
CA DRE License# 01405095

axiomra.com

Note: While the information contained herein is from sources deemed reliable and is believed to be correct, it is not in any way warranted or guaranteed by Axiom Retail Advisors.

For Sale or Lease
Former Big Lots
28,017 SF

2093 East Florida Avenue
Hemet, CA 92544



Property Highlights:

- Located on Florida Ave, Hemet's busiest retail corridor
- Signalized intersection
- Loading dock in the rear of the Premises
- Hemet and surrounding communities have seen a 22% population increase since 2010
- Hemet Valley Medical Center (320 beds) is approximately 1 mile away
- Prominent pylon signage available

Demographics:

2022 Estimates	1 MILE	3 MILE	5 MILE
Population	19,554	115,445	180,754
AHH Income	\$44,993	\$55,075	\$59,969
Daytime Population	4,537	22,874	32,582

2022 Traffic Counts	
Florida Avenue	29,271 CPD



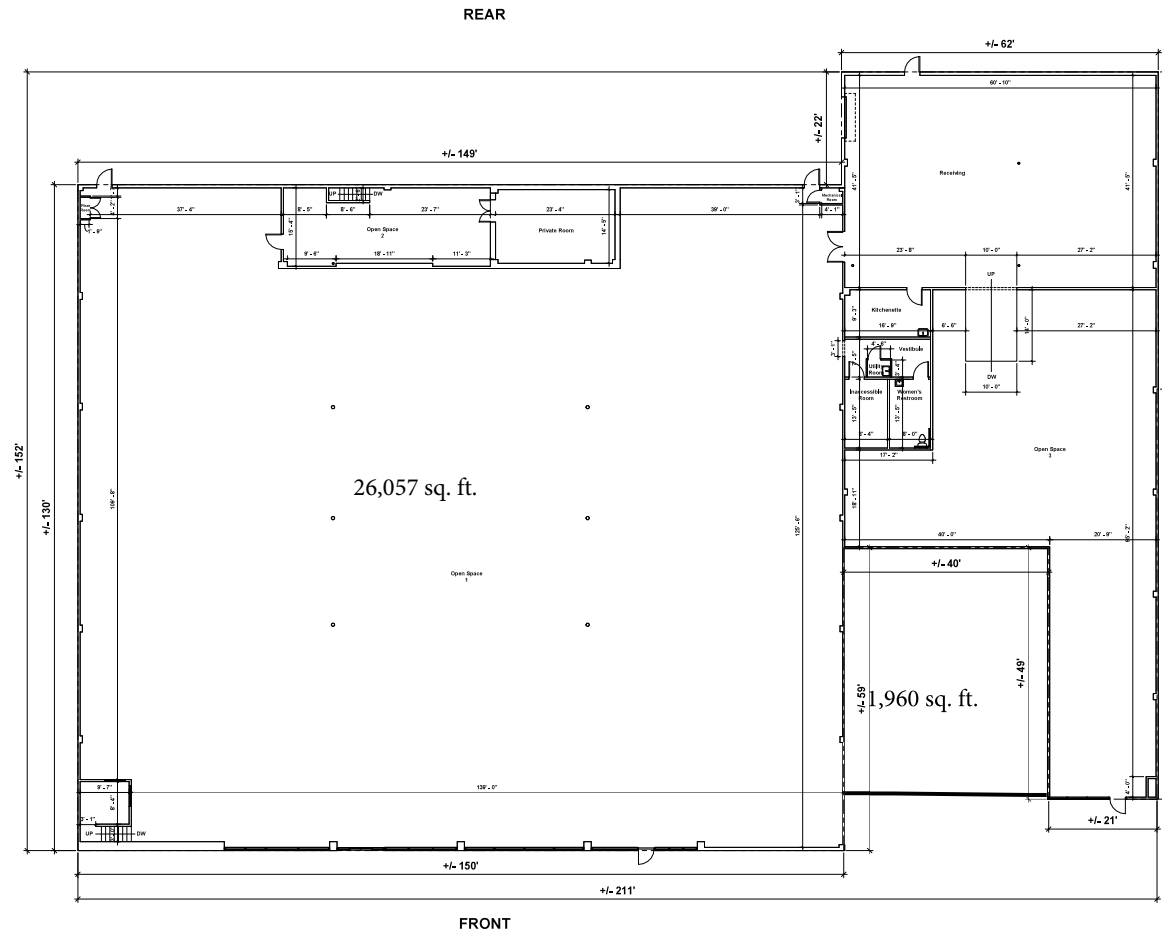
LEA CLAY PARK
949-521-7437
lea@axiomra.com
CA DRE License# 01087365

STEPHANIE SKRBIN
949-521-7436
stephanie@axiomra.com
CA DRE License# 01405095

axiomra.com

For Sale or Lease
Former Big Lots
28,017 SF

2093 East Florida Avenue
Hemet, CA 92544



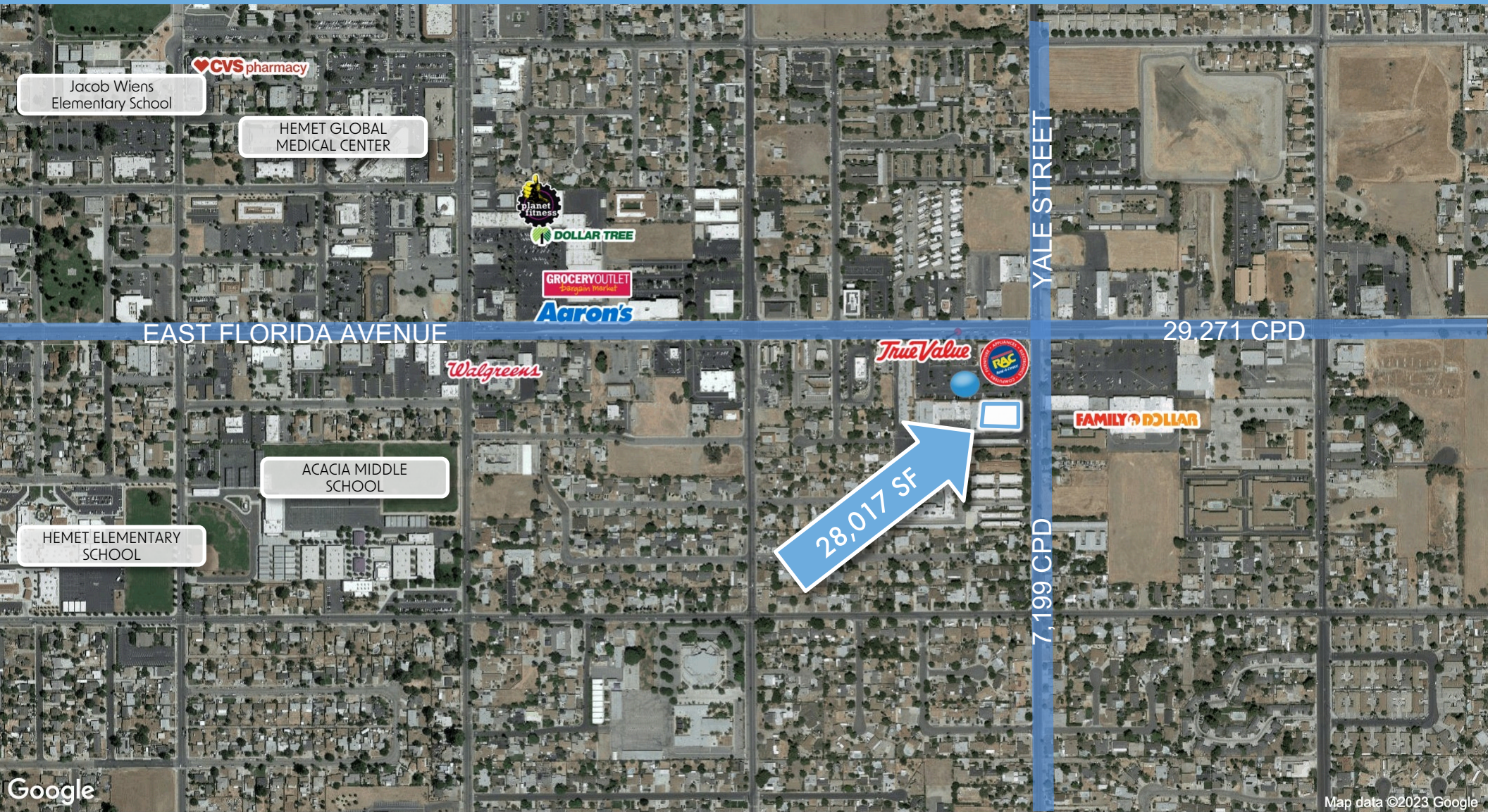
LEA CLAY PARK
949-521-7437
lea@axiomra.com
CA DRE License# 01087365

STEPHANIE SKRBIN
949-521-7436
stephanie@axiomra.com
CA DRE License# 01405095

axiomra.com

For Sale or Lease
Former Big Lots
28,017 SF

2093 East Florida Avenue
Hemet, CA 92544



LEA CLAY PARK
949-521-7437
lea@axiomra.com
CA DRE License# 01087365

STEPHANIE SKRBIN
949-521-7436
stephanie@axiomra.com
CA DRE License# 01405095

axiomra.com

Note: While the information contained herein is from sources deemed reliable and is believed to be correct, it is not in any way warranted or guaranteed by Axiom Retail Advisors.