



**KWC TEAM**  
YOUR VISION. OUR EXPERTISE. UNSTOPPABLE RESULTS

**FOR LEASE**



Established Southeast Dallas Office Building with Flexible Suites & Ample Parking

## 2602-2616 Martin Luther King Jr Blvd, Dallas TX 75215

### FOR LEASE

#### Property Features



3 Vacancies



75 Surface Parking



Com Ret Zoning

#### Property Description

Now leasing! Take advantage of three available suites in a well-maintained, two-story office building located in the heart of Southeast Dallas. The property offers a professional environment with flexible suite sizes and configurations, ideal for a range of businesses including medical, nonprofit, or general office use. Conveniently located near major roads and residential neighborhoods, the building also features an established tenant base of professional and nonprofit co-tenants, creating a collaborative and community-focused atmosphere.



**Delario Bolton - Commercial Director**



214.531.0402



[dbolton@kwcommercial.com](mailto:dbolton@kwcommercial.com)



[www.kwccre.com](http://www.kwccre.com)

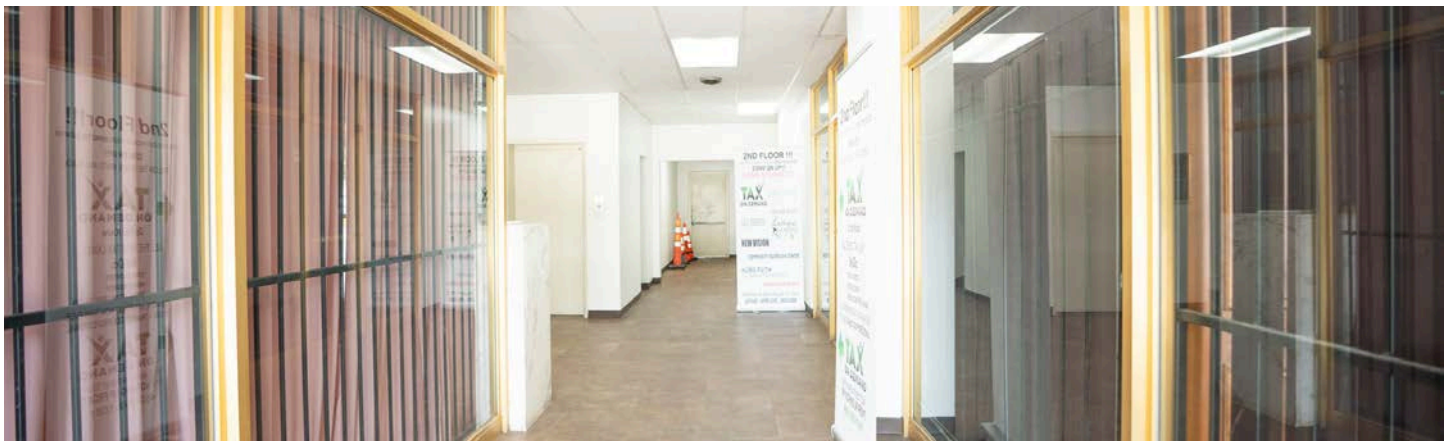
Each Office Is Independently  
Owned and Operated.





## Property Details

|                      |                                   |
|----------------------|-----------------------------------|
| <b>Building Size</b> | 17,019 SF                         |
| <b>Stories</b>       | 2                                 |
| <b>Zoning</b>        | Com Ret (Commercial Retail)       |
| <b>Year Built</b>    | 1963                              |
| <b>Parking</b>       | 75 Surface Spaces (4.40/1,000 SF) |
| <b>Tenancy</b>       | Multiple Tenants                  |
| <b>Occupancy</b>     | Not Owner-Occupied                |



## MLK Building Vacancies

| <b>Suite Number</b> | <b>Unit Size</b> |
|---------------------|------------------|
| 2606-201            | 462 SF           |
| 2606-204            | 524 SF           |
| 2606-205            | 531 SF           |

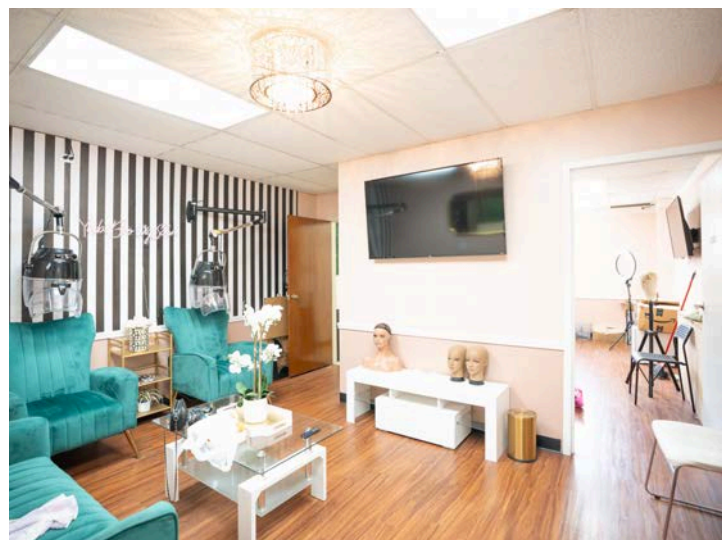






**KWC TEAM**  
YOUR VISION. OUR EXPERTISE. UNSTOPPABLE RESULTS

2602-2616 Martin Luther King Jr Blvd,  
Dallas TX 75215



**Delario Bolton - Commercial Director**

📞 214.531.0402  
✉ [dbolton@kwcommercial.com](mailto:dbolton@kwcommercial.com) [www.kwccre.com](http://www.kwccre.com)

Each Office Is Independently  
Owned and Operated.







**KWC TEAM**  
YOUR VISION. OUR EXPERTISE. UNSTOPPABLE RESULTS

2602-2616 Martin Luther King Jr Blvd,  
Dallas TX 75215



Delario Bolton – Commercial Director

📞 214.531.0402  
✉️ dbolton@kwcommercial.com 🌐 www.kwccre.com

Each Office Is Independently  
Owned and Operated.

