

22841 DEQUINDRE ROAD
HAZEL PARK, MICHIGAN

INDUSTRIAL FOR LEASE
2,207 Square Feet Available



**SIGNATURE
ASSOCIATES**
KNOW SIGNATURE | KNOW RESULTS

GREAT CLEAN BUILDING



PROPERTY FEATURES

- 2,207 square feet available
- 12' - 13' clear height
- (1) 10' x 10' grade level door
- Great shop building
- Clean and meticulously maintained
- Suits many uses
- 240 volt, 3-phase power
- Lease Rate: \$3,000/month Gross



For more information, please contact:

JOE STACK
(248) 359 0615
jstack@signatureassociates.com

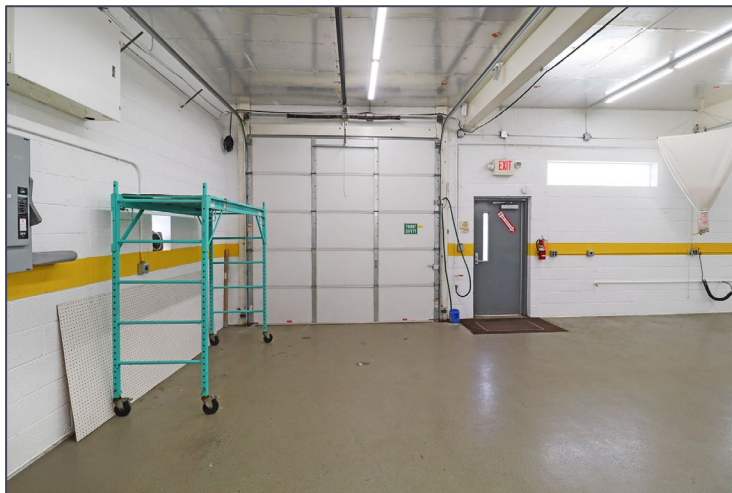
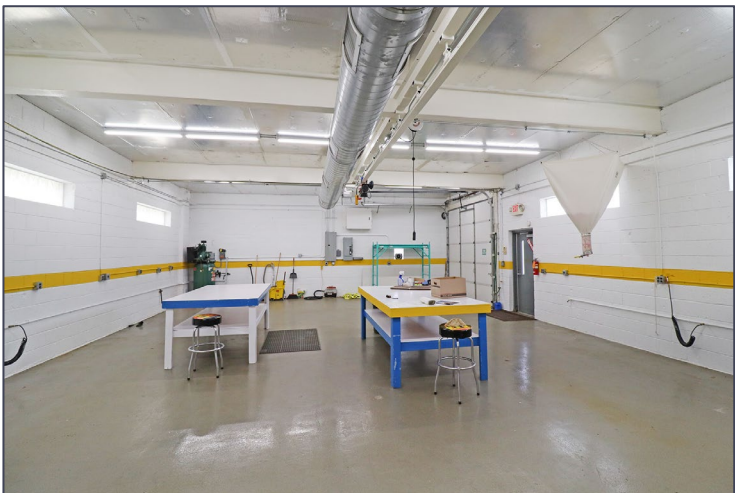
SIGNATURE ASSOCIATES
One Towne Square, Suite 1200
Southfield, MI 48076
www.signatureassociates.com

22841 Dequindre Road – Hazel Park, Michigan

Industrial For Lease

2,207
Square Feet
AVAILABLE

Interior Photos



For more information, please contact:

JOE STACK
(248) 359 0615
jstack@signatureassociates.com

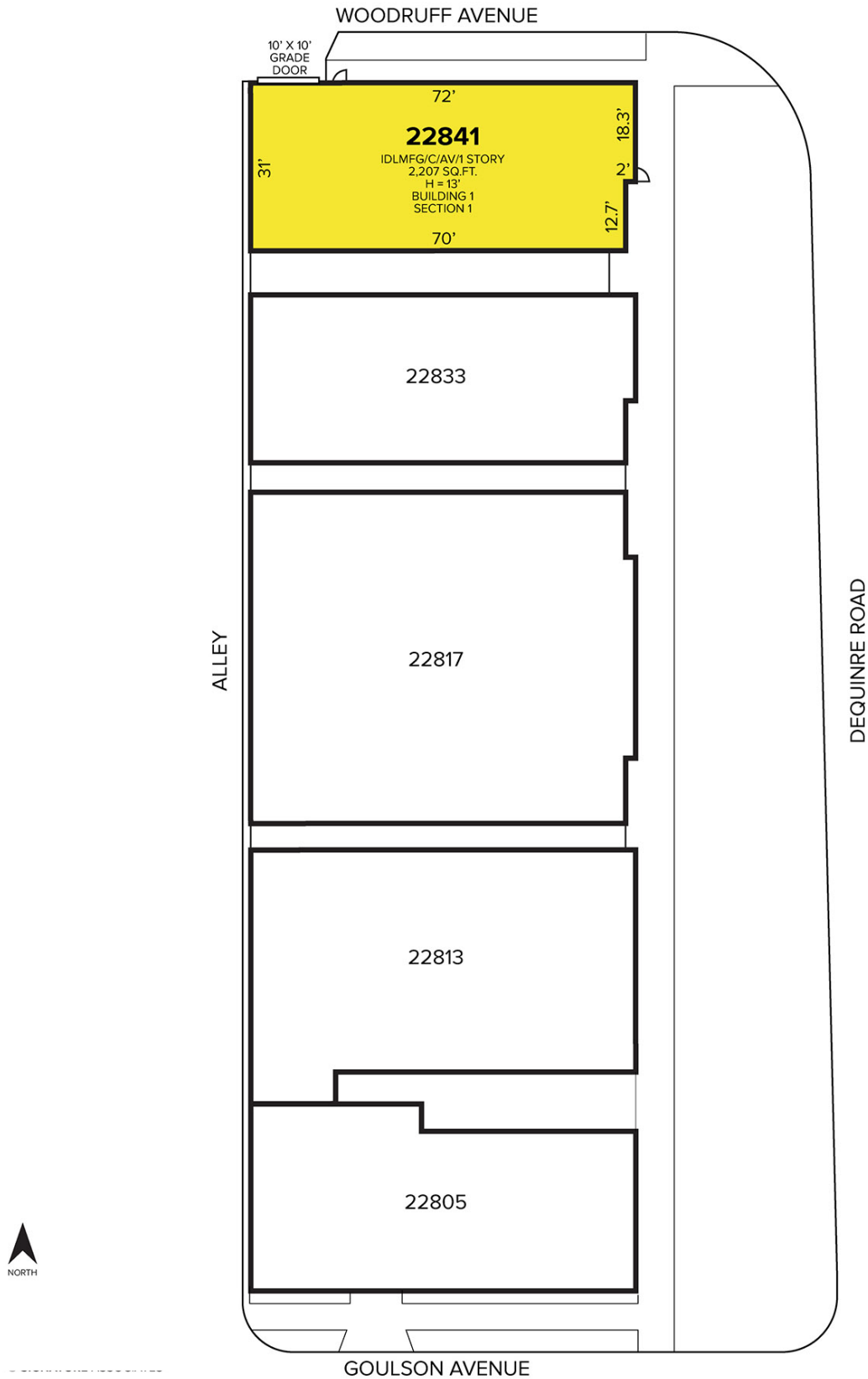
SIGNATURE ASSOCIATES
One Towne Square, Suite 1200
Southfield, MI 48076
www.signatureassociates.com

22841 Dequindre Road – Hazel Park, Michigan

Industrial For Lease

2,207
Square Feet
AVAILABLE

Site Plan



For more information, please contact:

JOE STACK
(248) 359 0615
jstack@signatureassociates.com

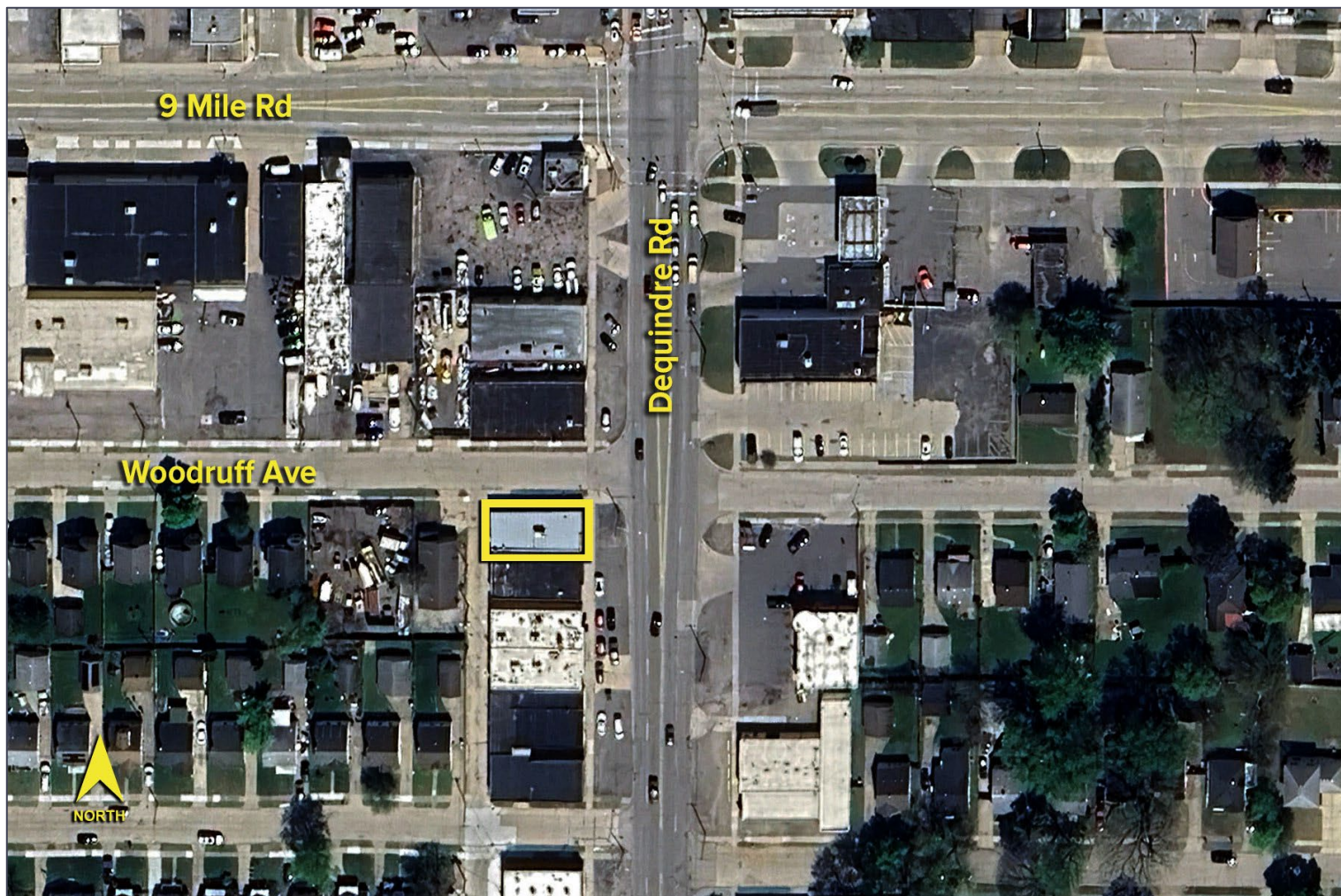
SIGNATURE ASSOCIATES
One Towne Square, Suite 1200
Southfield, MI 48076
www.signatureassociates.com

22841 Dequindre Road – Hazel Park, Michigan

Industrial For Lease

2,207
Square Feet
AVAILABLE

Aerial



For more information, please contact:

JOE STACK
(248) 359 0615
jstack@signatureassociates.com

SIGNATURE ASSOCIATES
One Towne Square, Suite 1200
Southfield, MI 48076
www.signatureassociates.com