



# 851

## IRWIN STREET

NEWLY  
REMODELED  
OFFICES  
FOR LEASE





## THE BUILDING

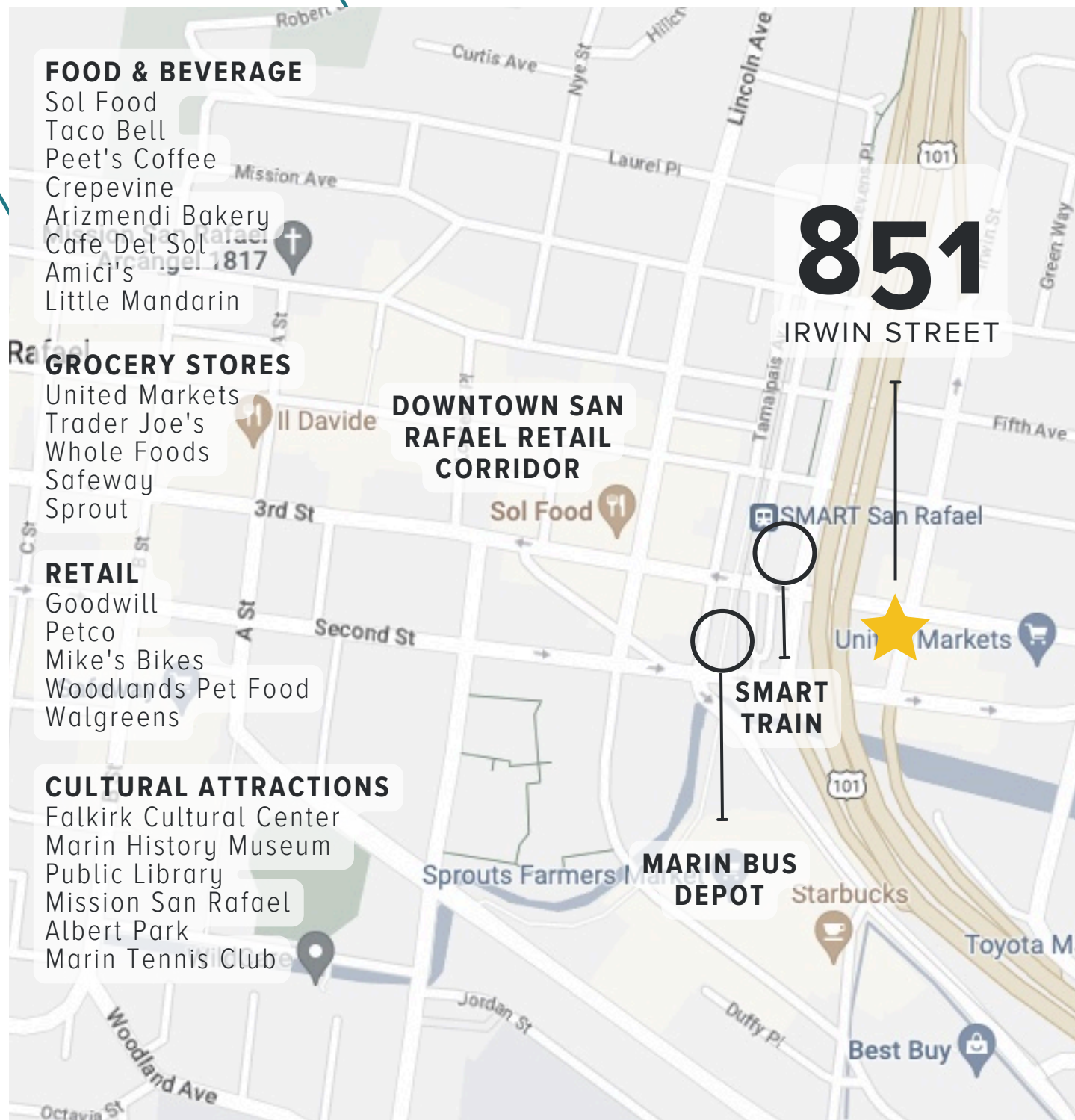
851 Irwin Street is a spacious three-story building spanning over 27K square feet, exterior decks, lobby, elevators, and natural light in each unit create an ideal space for small businesses. Conveniently located near Marin SMART Train, restaurants, grocery stores, and shops.

## HIGHLIGHTS

- Ample On-Site Parking
- Shared Kitchen and Conference Rooms
- Building-wide WiFi
- 1 Minute walk to Whole Foods, Shops, & Restaurants
- 1 Minute walk to SMART Train and Marin Bus Depot
- Easy Freeway Access
- Responsive On-Site Management
- Short Term & Flexible Leases
- On-Site Showing & Tour Contact
- Commission Fees available for Tenant Reps

[Watch Here 3D Walkthrough](#)







# 851

IRWIN STREET

2ND FLOOR  
130 SF - 6,580 SF



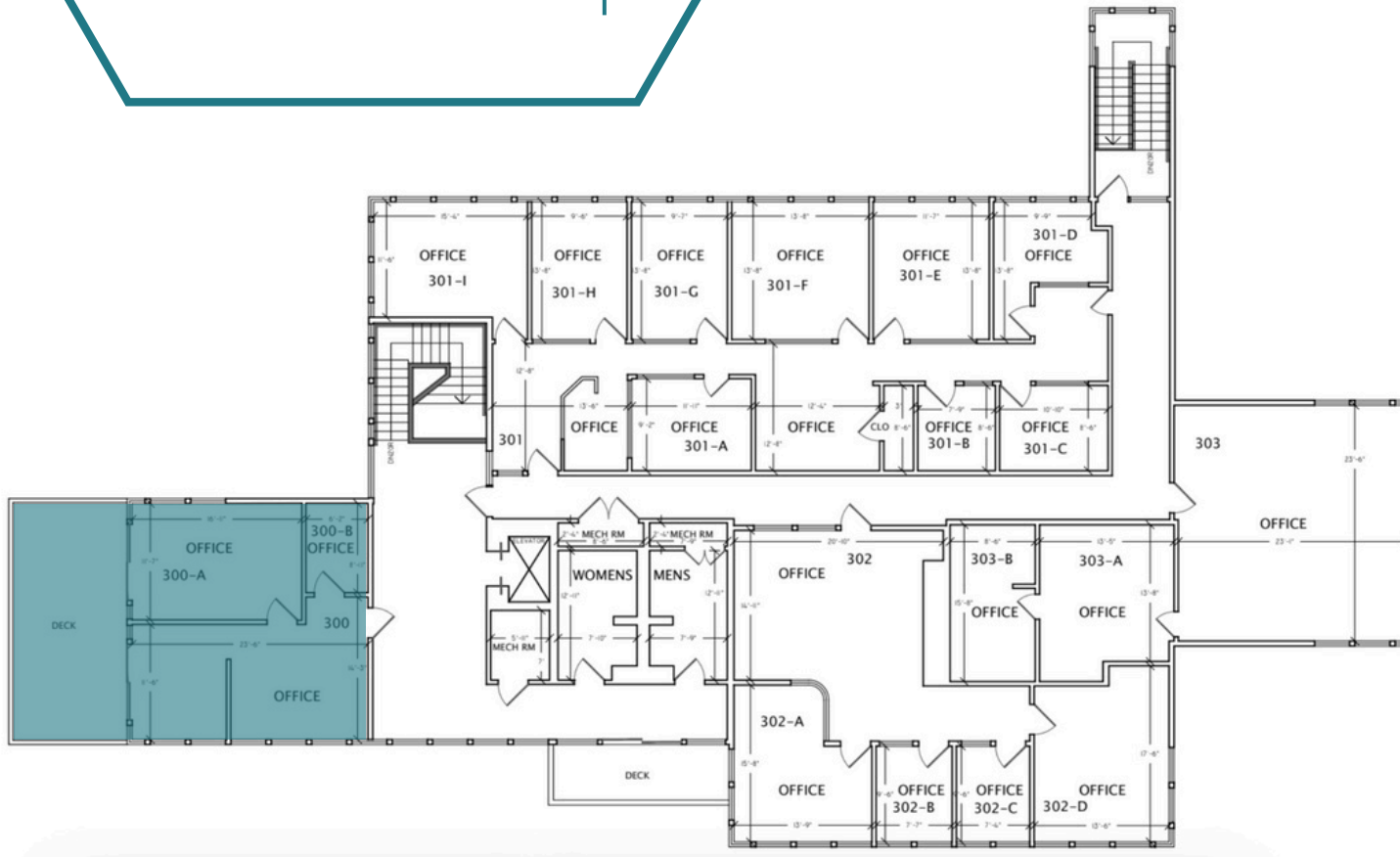
 AVAILABLE  
UNITS

SUITE	RENTABLE SF	RENT (SF/MO)
222	80	\$1.75 MG
2nd Floor Total		+/- 861

# 851

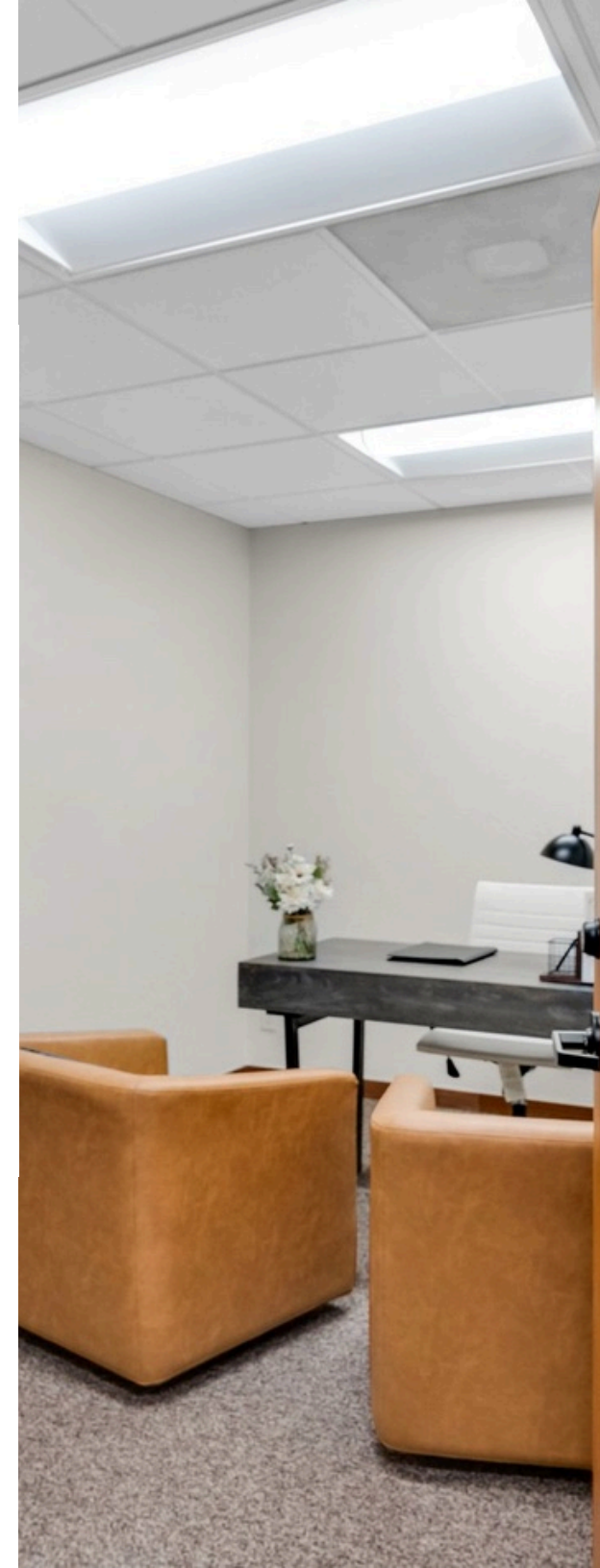
IRWIN STREET

3RD FLOOR  
130 SF - 4,400 SF



AVAILABLE  
UNITS

SUITE	RENTABLE SF	RENT (SF/MO)
300	809	\$1.24 MG
<b>3rd Floor Total</b>	<b>+/- 809</b>	







# 851

## IRWIN STREET

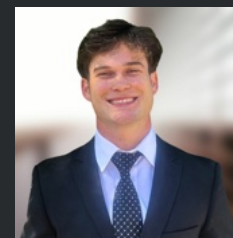
### FOR LEASING INFORMATION



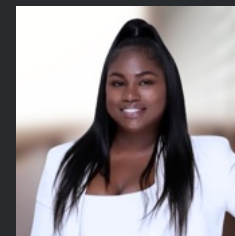
**James Kilpatrick**  
james@nainorcal.com  
510.290.9647  
LIC# 01277022



**Seth Hubbert**  
shubbert@nainorcal.com  
510.757.9929  
CalDRE #02158135



**Damon Gerstein**  
dgerstein@nainorcal.com  
415.465.4907  
CalDRE #02268840



**Williesha Lee**  
wlee@nainorcal.com  
510.309.6935  
CalDRE #02036627