



## 8447 44<sup>th</sup> Place

Lyons, Cook County, Illinois 60534

### PROPERTY HIGHLIGHTS



±2,500 SF  
BUILDING



±0.12  
ACRE SITE



±1,250 SF  
OFFICE SPACE



13'6"  
CEILING HEIGHT



1 DRIVE-IN  
DOOR (12' x 14')



FENCED  
PARKING



BRICK  
CONSTRUCTION



BUILT IN  
1970



I-1 INDUSTRIAL  
ZONING



IMMEDIATE  
ACCESS TO I-55



±5.3 MILES TO  
MIDWAY  
INTERNATIONAL  
AIRPORT

### Contacts

**Wilson Starr**

+1 630 693 0681

wstarr@hiffman.com

**Packy Doyle**

+1 630 691 0601

pdoyle@hiffman.com

**Adam Roth, CCIM, SIOR**

+1 630 691 0607

aroth@hiffman.com

One Oakbrook Terrace

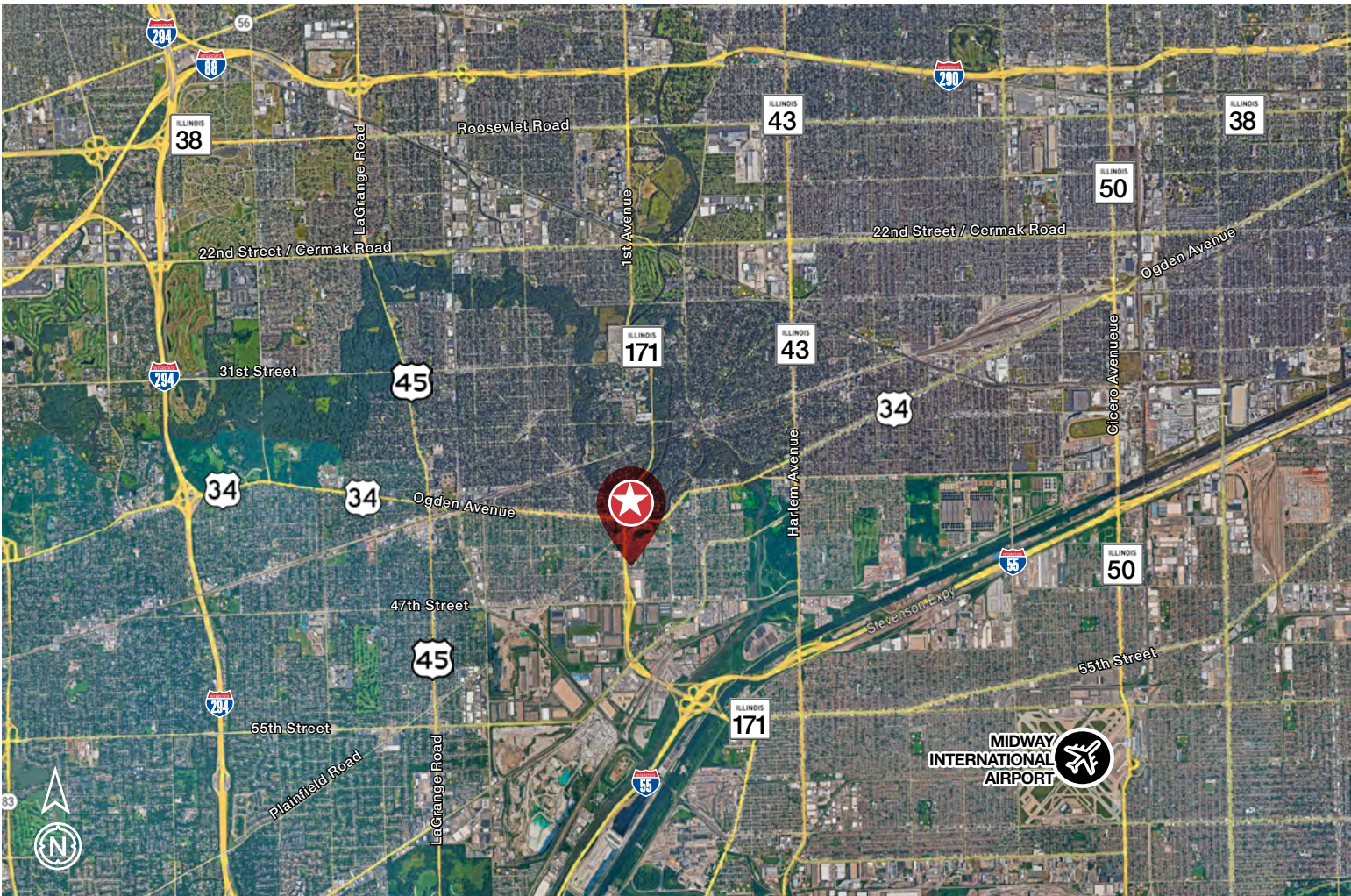
Suite 400

Oakbrook Terrace, Illinois 60181

+1 630 932 1234

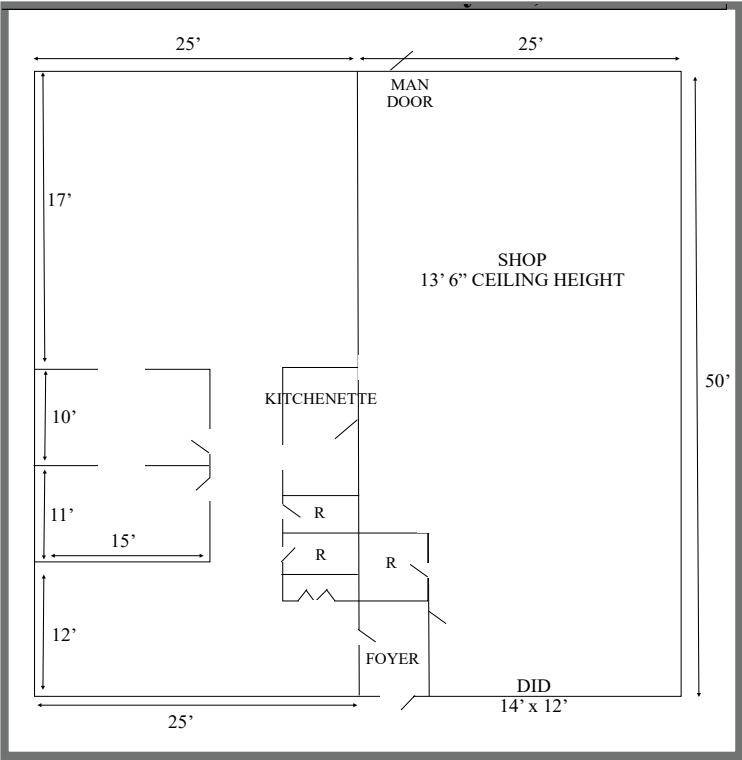
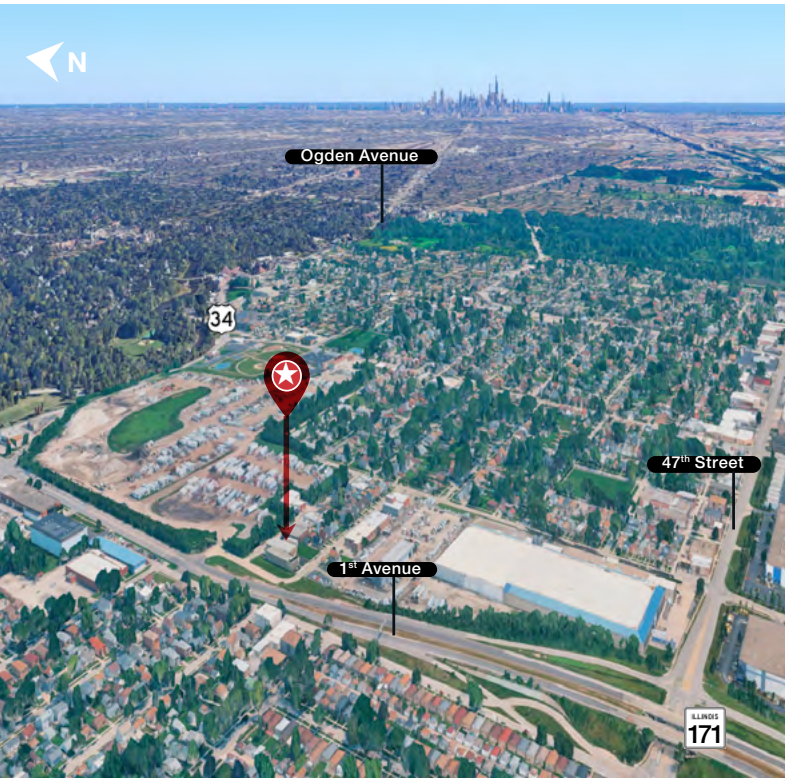
[hiffman.com](http://hiffman.com)





PROPERTY HIGHLIGHTS

- BUILDING SIZE:** ± 2,500 SF  
**OFFICE AREA:** ± 1,250 SF  
**SITE SIZE:** ± 0.12 AC  
**CLEAR HEIGHT:** 13'-6"  
**LOADING:** 1 DRIVE-IN DOOR (12'H x 14'W)  
**CAR PARKING:** FENCED  
**YEAR BUILT:** 1970  
**CONSTRUCTION:** BRICK  
**HVAC:** ROOFTOP  
**ZONING:** I-1 INDUSTRIAL  
**PARCEL NUMBER:** 18-02-306-043-0000  
**SALE PRICE:** **SUBJECT TO OFFER**  
**COMMENTS:**
- ± 3 MINUTES TO I-55 & 1ST AVENUE (IL-171) INTERCHANGE
  - WELL-MAINTAINED WAREHOUSE & OFFICE AREA
  - FENCED PARKING LOT
  - PROXIMITY TO NUMEROUS RETAIL AMENITIES INCLUDING GAS STATIONS, LODGING, RESTAURANTS & ENTERTAINMENT VENUES
  - ± 5.3 MILES TO MIDWAY AIRPORT
  - SKILLED WORKFORCE IN THE REGION



>> KEY DISTANCES

MAJOR ARTERIES / INTERSTATES	DRIVE MILES (ONE-WAY)	DRIVE-TIME (ONE-WAY)
I-290 EXPRESSWAY	14.3	13 Minutes
I-88 EXPRESSWAY	6.5	16 Minutes
I-294 EXPRESSWAY	7.5	19 Minutes
I-55 EXPRESSWAY	1.8	3 Minutes
I-355 EXPRESSWAY	14.2	15 Minutes
I-80 EXPRESSWAY	22.0	27 Minutes
1ST / ARCHER AVENUE (IL-171)	400'	1 Minute
CICERO AVENUE (IL-50)	6.2	15 Minutes
LA GRANGE ROAD (IL-45)	2.0	6 Minutes
OGDEN AVENUE (ROUTE 34)	2.9	10 Minutes
HARLEM AVENUE (IL-43)	2.2	6 Minutes
ROOSEVELT ROAD (IL-38)	3.9	12 Minutes
DOWNTOWN CHICAGO (LOOP)	14.0	22 Minutes
O'HARE INTERNATIONAL AIRPORT	19.1	28 Minutes
MIDWAY INTERNATIONAL AIRPORT	5.5	12 Minutes

>> 2024 DEMOGRAPHICS AT-A-GLANCE

ESTIMATES BASED ON A 5-MILE RADIUS

**383,406**  
TOTAL  
POPULATION

**\$103,946**  
AVERAGE  
HOUSEHOLD  
INCOME

**160,252**  
LABOR  
FORCE

**32%**  
BACHELOR /  
HIGHER  
EDUCATION  
DEGREES



# FOR SALE

8447 44<sup>TH</sup> PLACE | LYONS, ILLINOIS 60534



## Contacts

**Wilson Starr**

+1 630 693 0681

[wsarr@hiffman.com](mailto:wsarr@hiffman.com)

**Packy Doyle**

+1 630 691 0601

[pdoyle@hiffman.com](mailto:pdoyle@hiffman.com)

**Adam Roth, CCIM, SIOR**

+1 630 691 0607

[aroth@hiffman.com](mailto:aroth@hiffman.com)