



TRADEMARK
BUSINESS CENTER



220 / 230 / 240 Great Circle Road / Nashville, TN

CBRE



PROPERTY DETAILS

220 / 230 / 240 Great Circle Road / Nashville, TN

232,972 SF

Single Story Business Park

- + Office Suites and Light Industrial Flex Spaces Available
- + Multiple Spec Suites in Move-in Condition
- + Dock and Drive-in Doors Available
- + Professionally Owned and Managed
- + Multiple suites with HVAC in Warehouse



Flex Space Available



Conveniently Located Just 3 Miles
North of Downtown Nashville



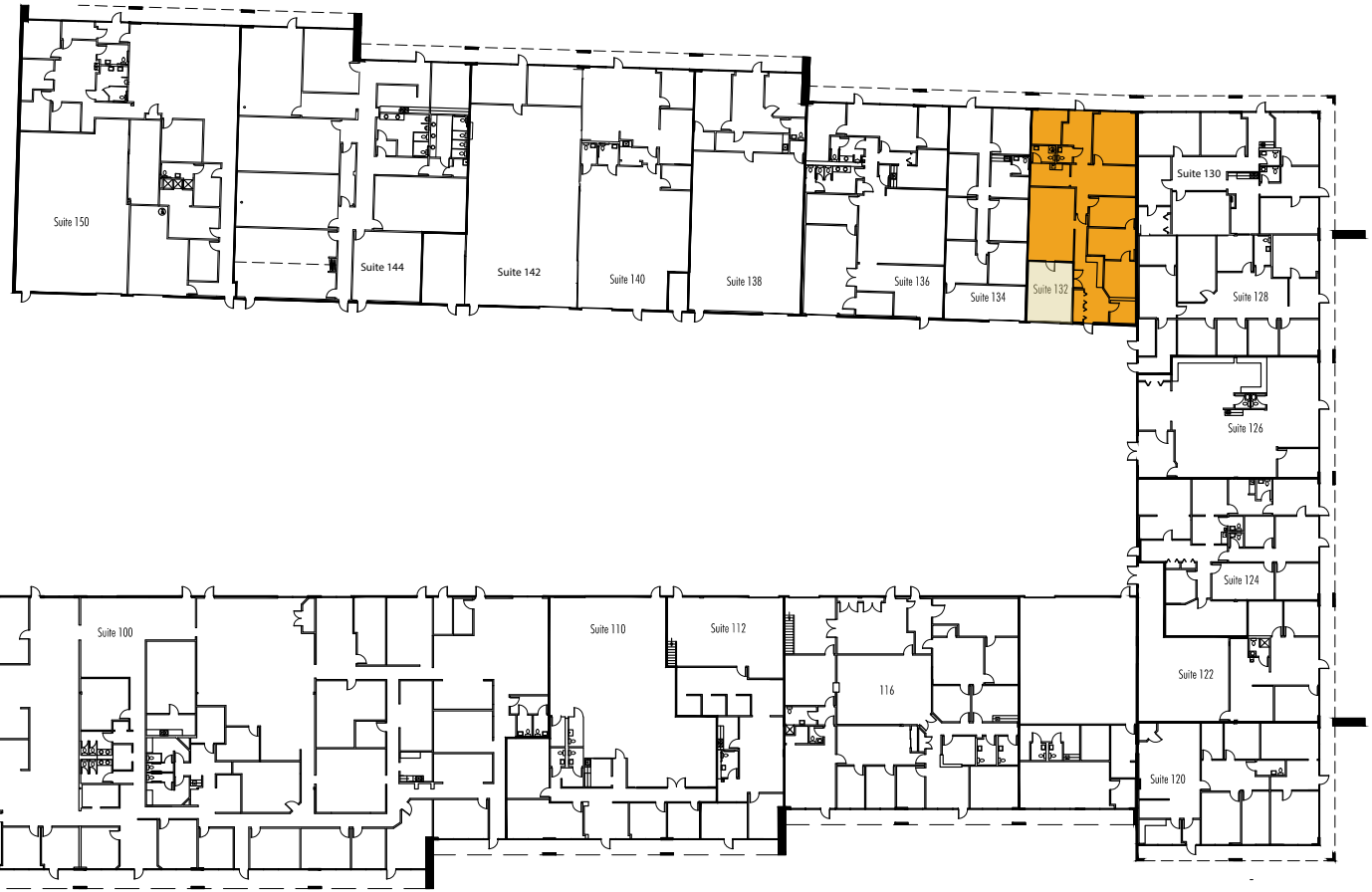
Less Than a Mile from I-65



Parking Ratio: 3/1,000



BUILDING ONE



Available Suites

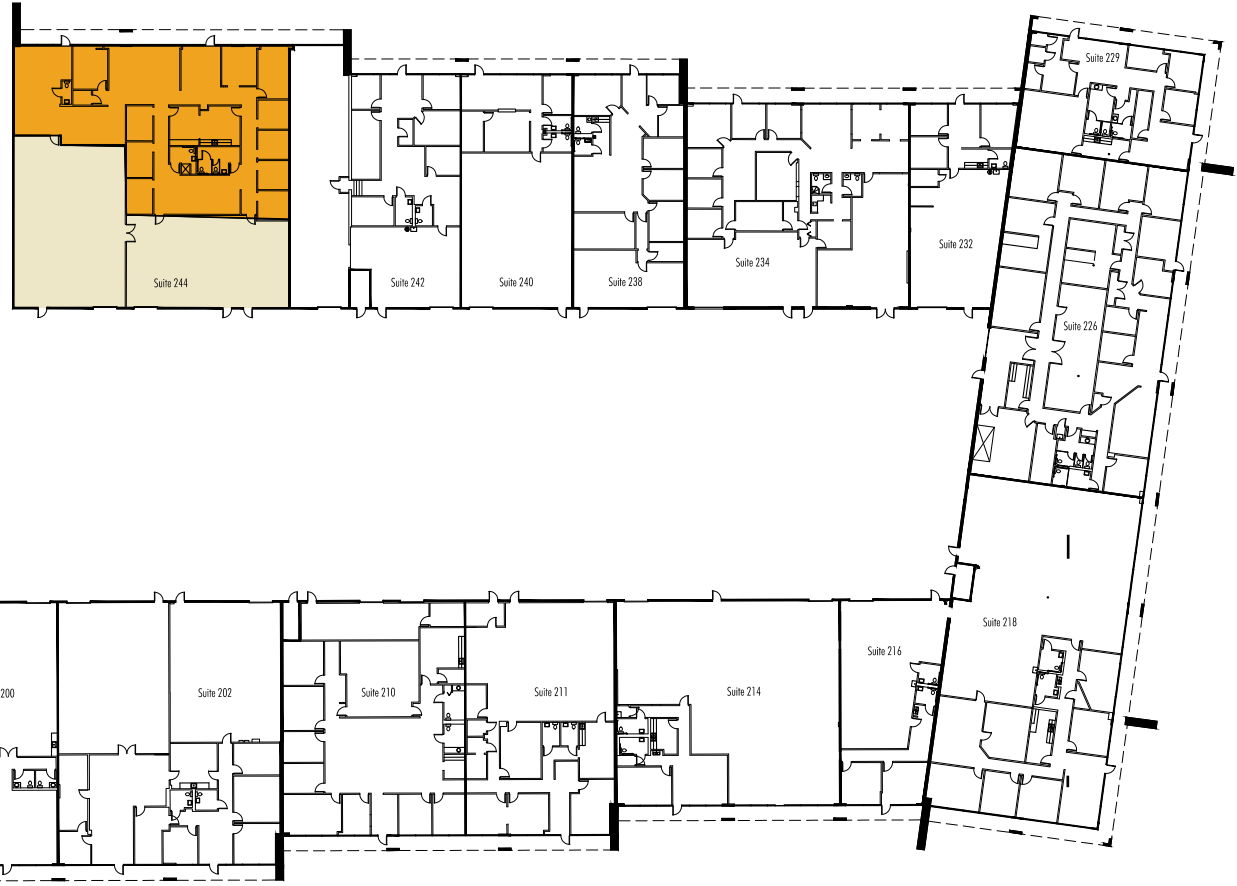
+ Suite 132 - 2,686 SF
(2,268 Office; 418 Warehouse)

Available 3/1/2025





BUILDING TWO



Available Suites

+ Suite 244 - 9,203 SF

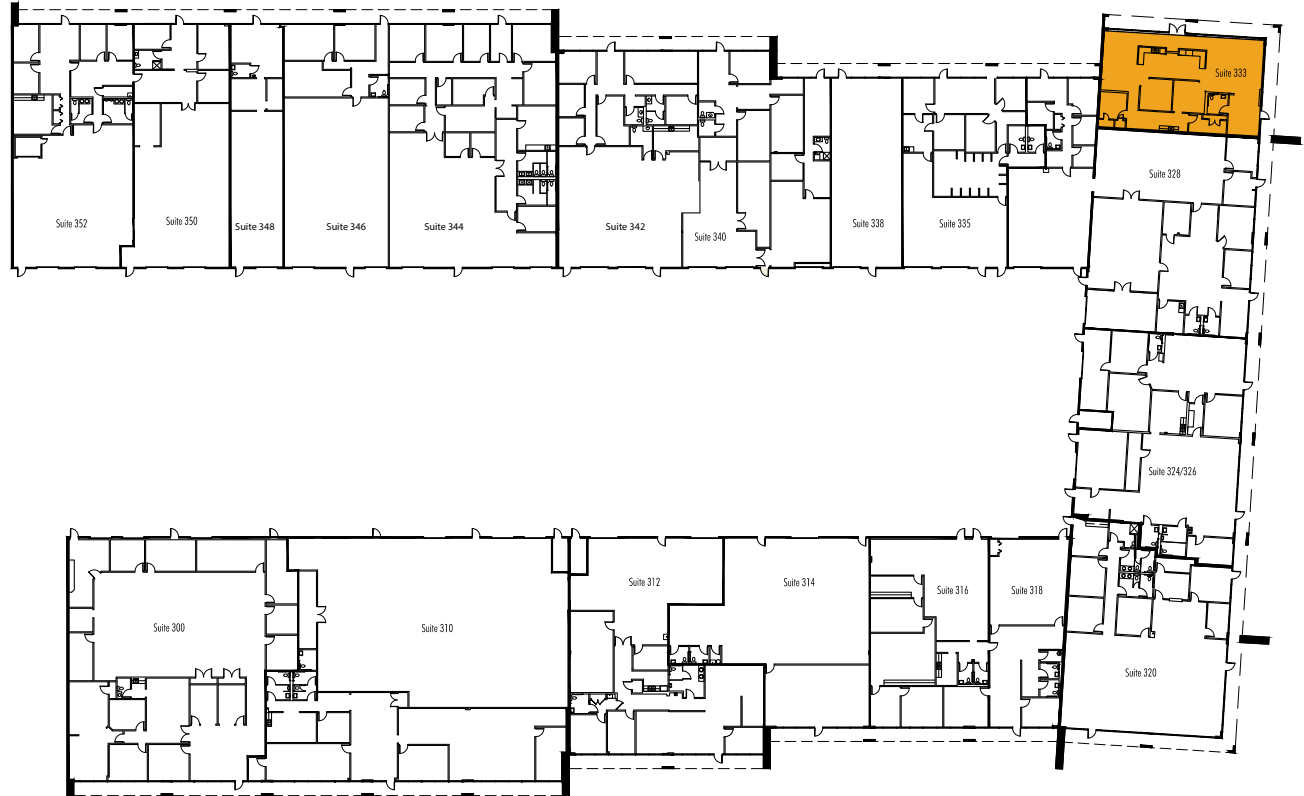
(5,191 Office; 4,012 Warehouse)

Available 9/1/2025





BUILDING THREE



Available Suites

+ Suite 333 - 2,272 SF

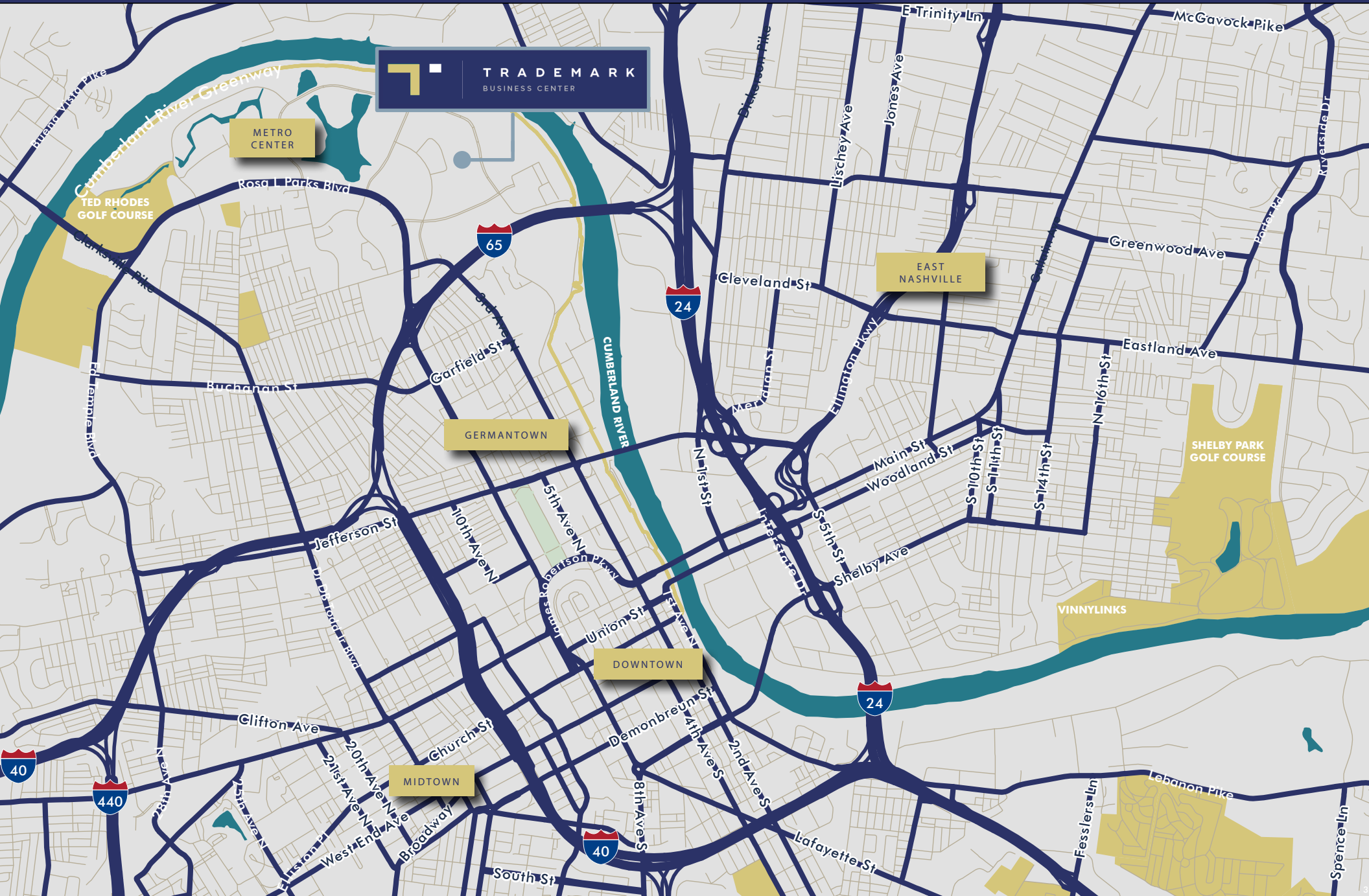
Available 3/1/2025

 Office

 Warehouse



AREA OVERVIEW



 TRADEMARK
BUSINESS CENTER

METRO
CENTER

TED RHODES
GOLF COURSE

GERMANTOWN

DOWNTOWN

MIDTOWN

EAST
NASHVILLE

VINNYLINKS

SHELBY PARK
GOLF COURSE



ACCESS & AMENITIES





TRADE MARK
BUSINESS CENTER

FOR MORE INFORMATION

Frank Thomasson, SIOR CCIM

Office: +1 615 248 3500

Direct: +1 615 493 9258

frank.thomasson@cbre.com

Byran Fort, SIOR

Office: +1 615 248 3500

Direct: +1 615 493 9259

byran.fort@cbre.com

Grace Sport

Office: +1 615 248 3500

Direct: +1 615 493 9261

grace.sport@cbre.com

© 2024 CBRE, Inc. All rights reserved. This information has been obtained from sources believed reliable, but has not been verified for accuracy or completeness. You should conduct a careful, independent investigation of the property and verify all information. Any reliance on this information is solely at your own risk. CBRE and the CBRE logo are service marks of CBRE, Inc. All other marks displayed on this document are the property of their respective owners, and the use of such logos does not imply any affiliation with or endorsement of CBRE. Photos herein are the property of their respective owners. Use of these images without the express written consent of the owner is prohibited.

