



CAPITOL
EQUITIES

FOR LEASE

Providing creative commercial real estate solutions since 1997



OFFICE | 1,200 - 3,200 SF

DOWNTOWN CBUS

5 EAST LONG STREET, COLUMBUS, OH 43215

ED FELLOWS

VP Brokerage
614.760.5660 x123
efellows@capitolequities.com

J.R. KERN

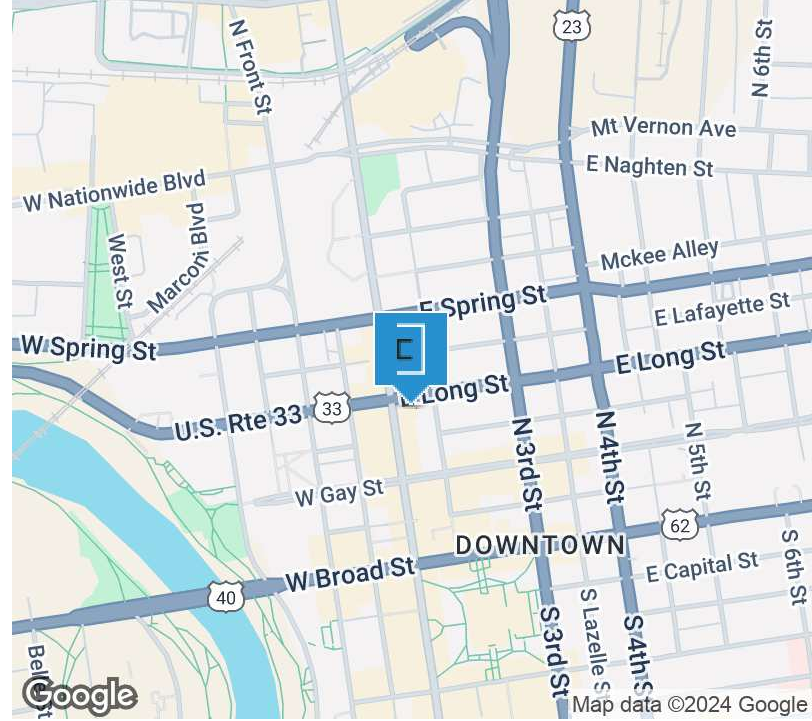
President
614.760.5660 x124
jrkern@capitolequities.com



**CAPITOL
EQUITIES**

FOR LEASE | OFFICE 5 EAST LONG STREET

5 EAST LONG STREET, COLUMBUS, OH 43215



Property Description

Fully-updated, open layout office suites in the heart of downtown Columbus adjacent to the most exciting transformation in downtown Columbus.

Property Highlights

- Modern, open layout office suites with updated lighting and flooring, and XL windows with great downtown Columbus view
- Exterior Marquee signage available for full-floor tenants
- Located two blocks from Capitol Square and next to prime restaurants, hotels and businesses
- Several easy parking options adjacent to building
- INCENTIVE - ONE FREE PARKING SPACE WITH 5-YEAR DEAL

Location Description

Prominent corner location at Long and High Streets in the central business district. Across from the new Nicholas residential project and close to several high-profile residential projects. Two blocks from Capitol Square. Walking distance to several restaurants and retailers including Speck, Veritas, Hank's Seafood and Chouette French Bistro

OFFERING SUMMARY

Available SF	1,200 - 3,200 SF
Lease Rate:	\$15.50 SF/yr
Utilities:	Included in Rents
2024 Parking Incentive	1 Free Parking Space
Availability	February 1, 2025

ED FELLOWS

VP Brokerage
614.760.5660 x123
efellows@capitolequities.com

J.R. KERN

President
614.760.5660 x124
jrkern@capitolequities.com

CAPITOLEQUITIES.COM

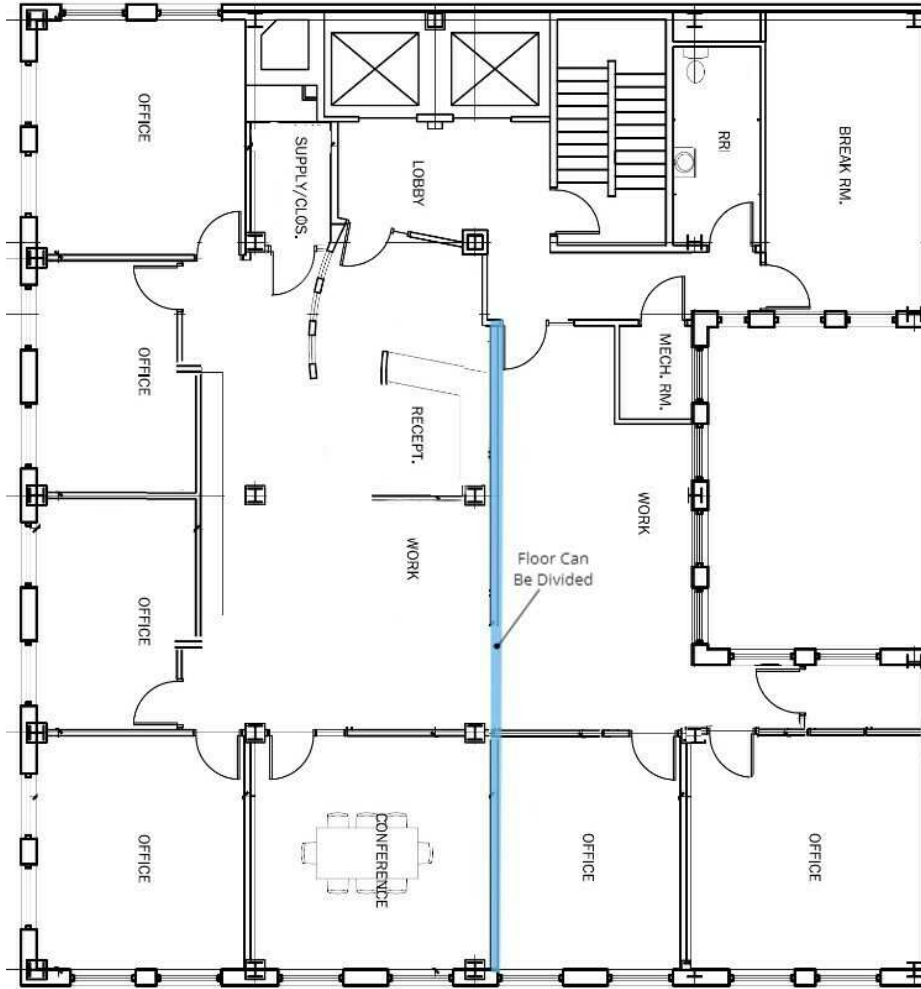
The information contained herein was furnished by sources believed to be reliable, but it is not guaranteed, warranted or represented by Capitol Equities. The presentation of this property is submitted subject to errors, omissions, change of price or condition prior to sale or lease, or withdrawn without notice.



**CAPITOL
EQUITIES**

FOR LEASE | OFFICE 5 EAST LONG STREET

5 EAST LONG STREET, COLUMBUS, OH 43215



11th Floor - full floor available 2/1/2025. Can be divided to 1,200 and 2,000 SF suites

Available Spaces

SUITE	SIZE (SF)	LEASE RATE	DESCRIPTION
1100	1,200 - 3,200 SF	\$15.50 SF/yr	Entire floor available with a mix of private offices and open work area. Floor can be divided to 1,200 and 2,000 SF suites. Current layout includes 7 offices/conference rooms, open work areas, reception area, large breakroom/kitchenette and private restroom.

ED FELLOWS

VP Brokerage
614.760.5660 x123
efellows@capitolequities.com

J.R. KERN

President
614.760.5660 x124
jrkern@capitolequities.com

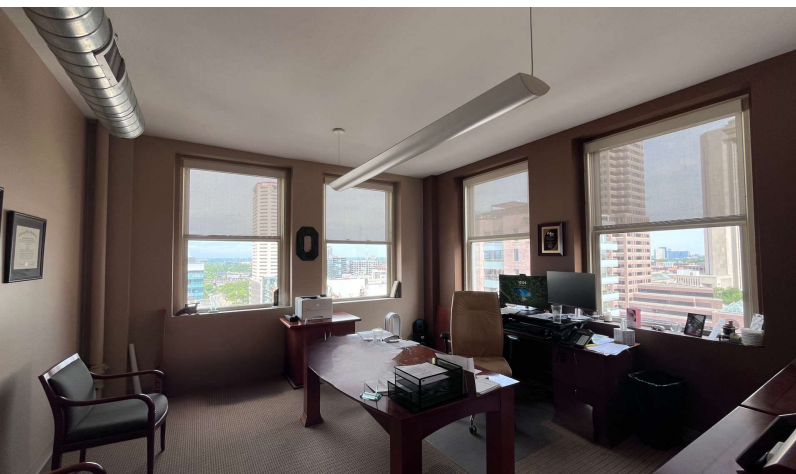
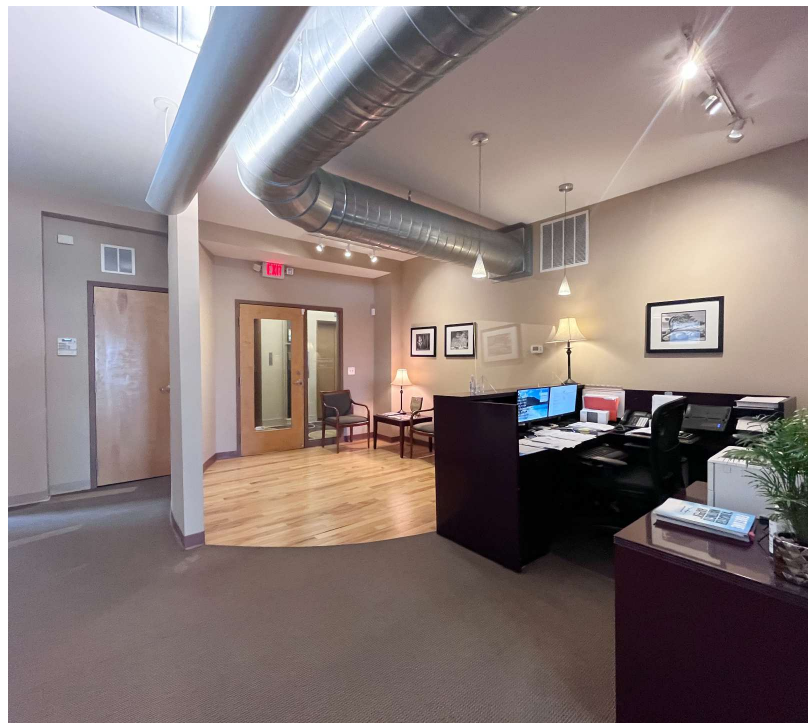
CAPITOLEQUITIES.COM



CAPITOL
EQUITIES

FOR LEASE | OFFICE 5 EAST LONG STREET

5 EAST LONG STREET, COLUMBUS, OH 43215



ED FELLOWS

VP Brokerage
614.760.5660 x123
efellows@capitolequities.com

J.R. KERN

President
614.760.5660 x124
jrkern@capitolequities.com

CAPITOLEQUITIES.COM

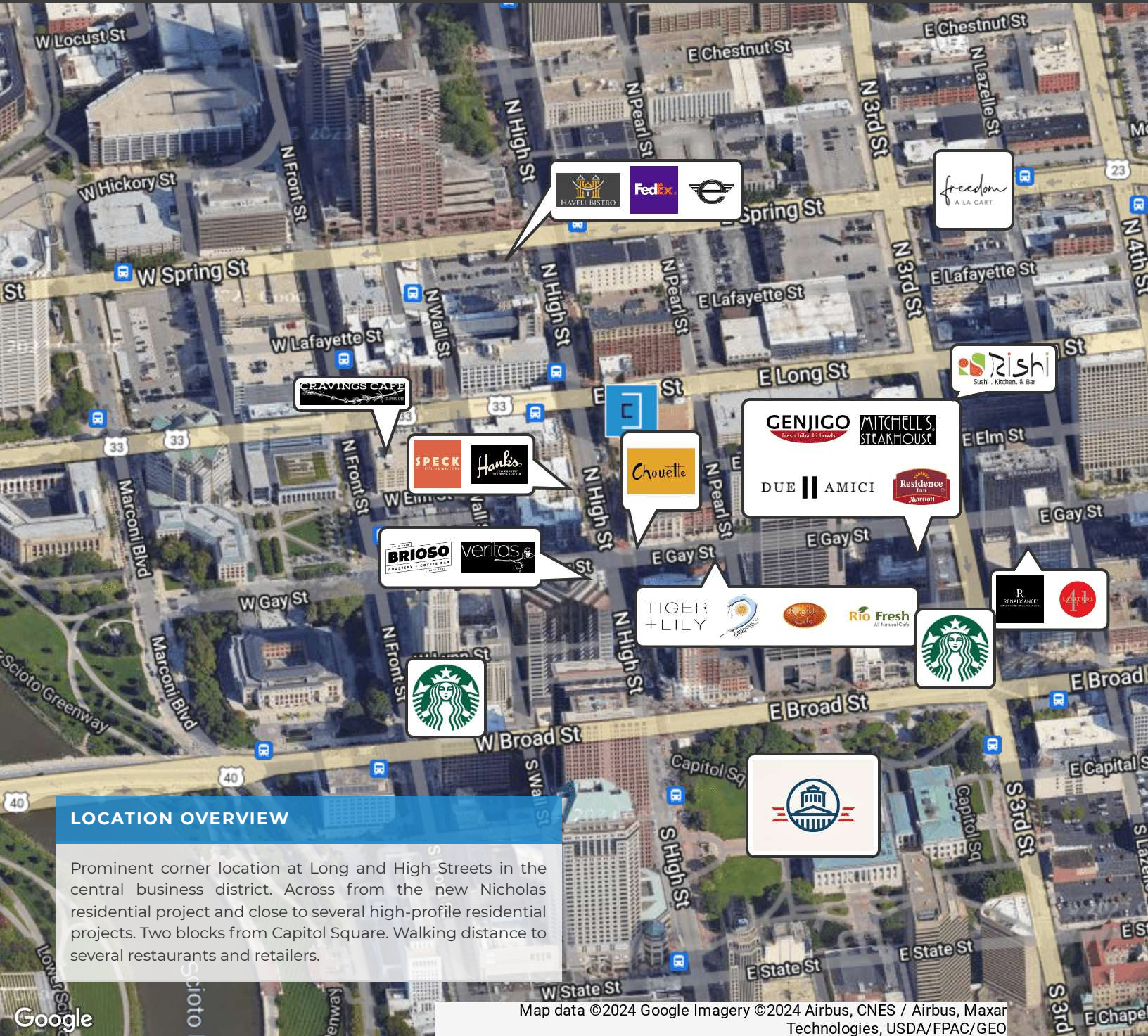


**CAPITOL
EQUITIES**

FOR LEASE | OFFICE

5 EAST LONG STREET

5 EAST LONG STREET, COLUMBUS, OH 43215



LOCATION OVERVIEW

Prominent corner location at Long and High Streets in the central business district. Across from the new Nicholas residential project and close to several high-profile residential projects. Two blocks from Capitol Square. Walking distance to several restaurants and retailers.

Map data ©2024 Google Imagery ©2024 Airbus, CNES / Airbus, Maxar Technologies, USDA/FPAC/GEO

ED FELLOWS

VP Brokerage
614.760.5660 x123
efellows@capitolequities.com

J.R. KERN

President
614.760.5660 x124
jrkern@capitolequities.com

CAPITOLEQUITIES.COM