



## Shopping Center Overview

- 540,000 SF shopping center on Shreveport-Barksdale Hwy, between Dee St & Knight St, just southwest of Clyde Fant Memorial Pkwy in Shreveport, LA
- Shadow anchored by 
- Excellent visibility and easily accessible with signage on Shreveport-Barksdale Hwy
- Available: 1,200 SF - 32,000 SF

## Demographics

	1 mile	3 miles	5 miles
2016 Population	8.697	72.188	181.597
5 Yr. Proj. Growth	17.1%	13.6%	11.2%
Avg. HH Income	\$87,800	\$78,839	\$69,800

## Join These Tenants

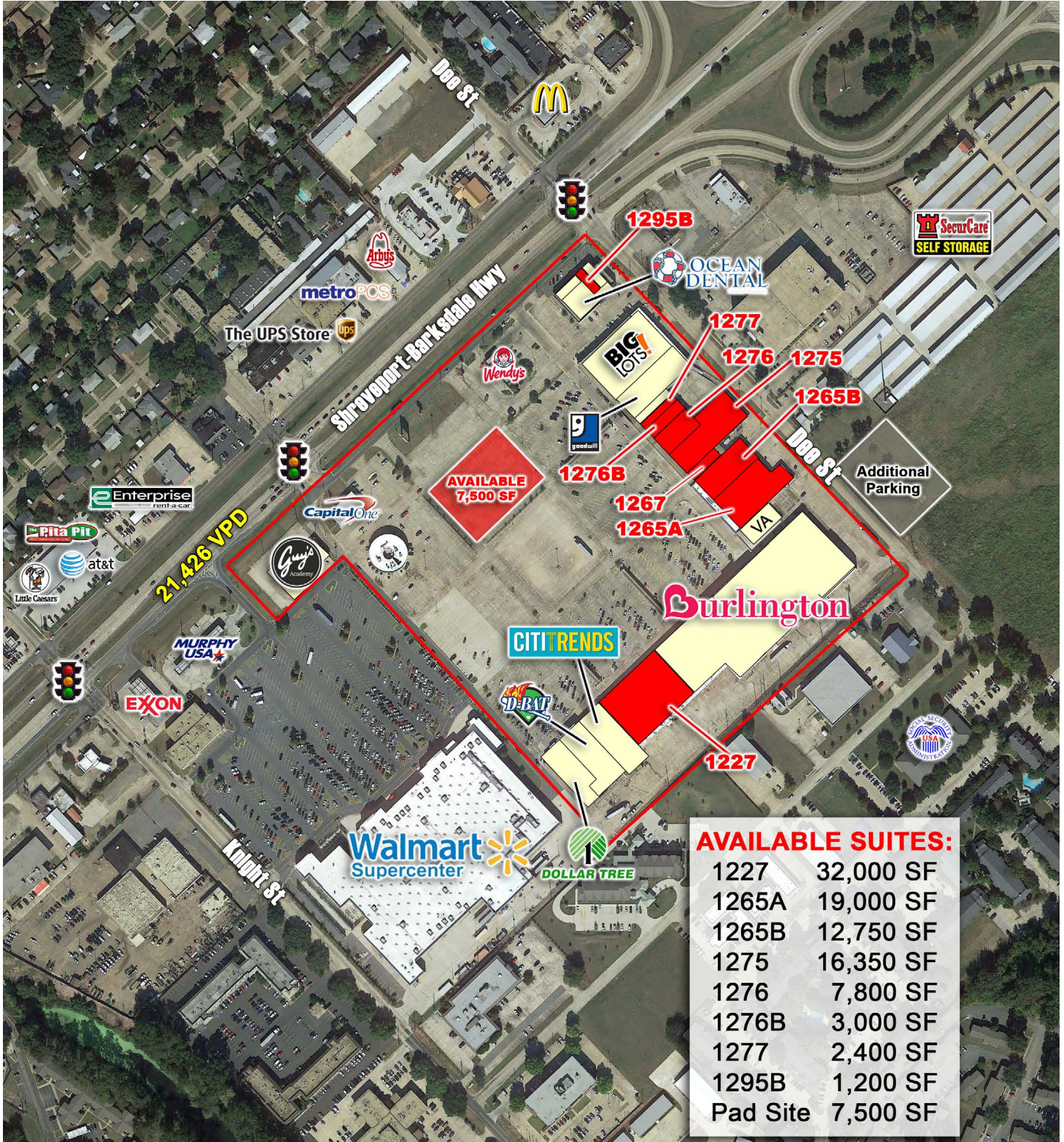


## Traffic Counts

Shreveport-Barksdale Hwy: 21,549 VPD  
(MPSI 2014)

**Bo Avery**  
(972) 480-1788  
bo@trimarsh.com

The information contained herein was obtained from sources deemed reliable; however, no guarantees, warranties or representations are made as to the completeness or accuracy thereof. The presentation of this real estate information is subject to errors, omissions, change of price, prior sale or lease or withdrawal without notice.

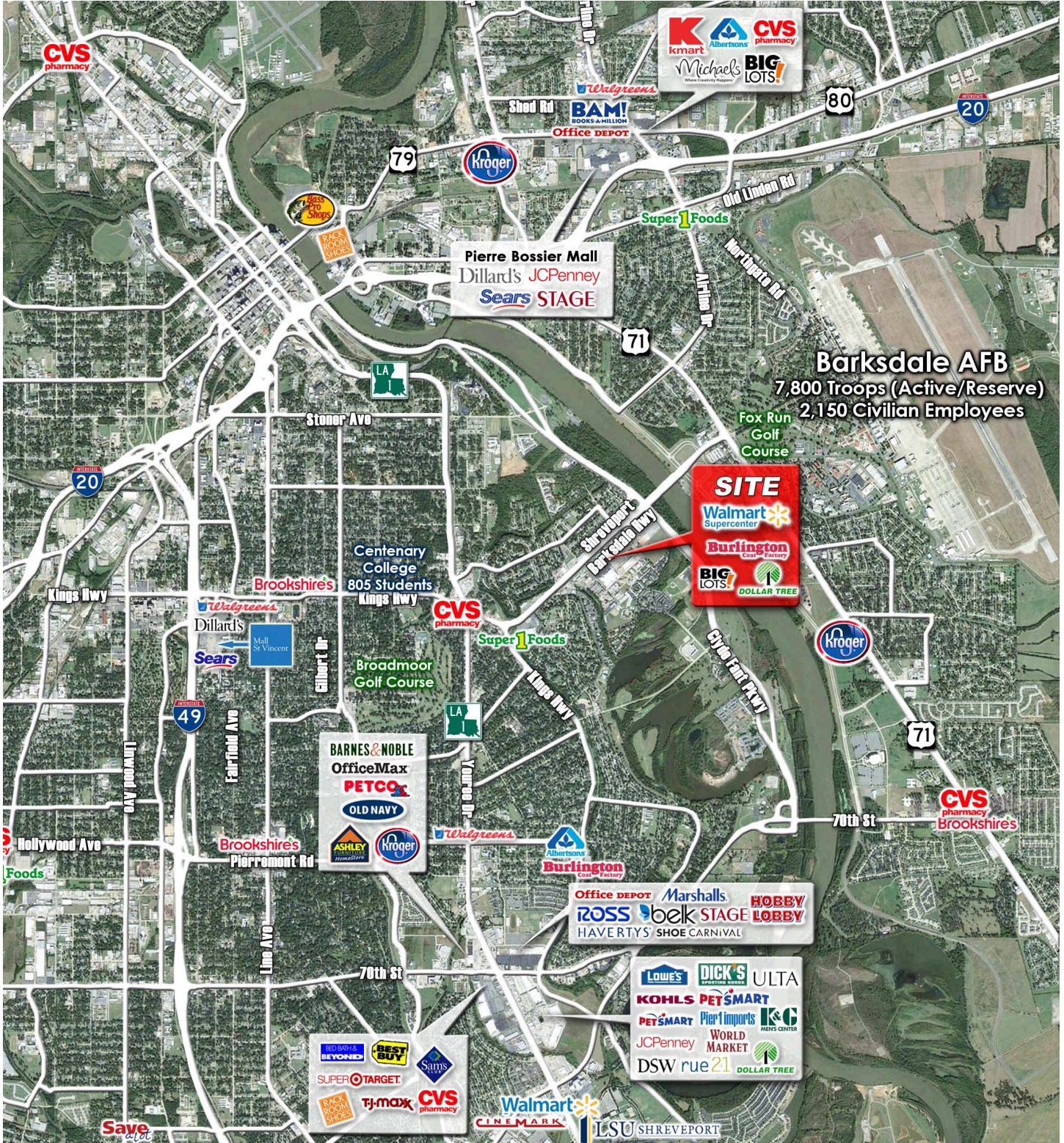


**Bo Avery**  
(972) 480-1788  
bo@trimarsh.com

The information contained herein was obtained from sources deemed reliable; however, no guarantees, warranties or representations are made as to the completeness or accuracy thereof. The presentation of this real estate information is subject to errors, omissions, change of price, prior sale or lease or withdrawal without notice.

# Shreve City Shopping Center

1253 Shreveport-Barksdale Hwy  
Shreveport, Louisiana 71105



**Bo Avery**  
(972) 480-1788  
bo@trimarsh.com

The information contained herein was obtained from sources deemed reliable; however, no guarantees, warranties or representations are made as to the completeness or accuracy thereof. The presentation of this real estate information is subject to errors, omissions, change of price, prior sale or lease or withdrawal without notice.