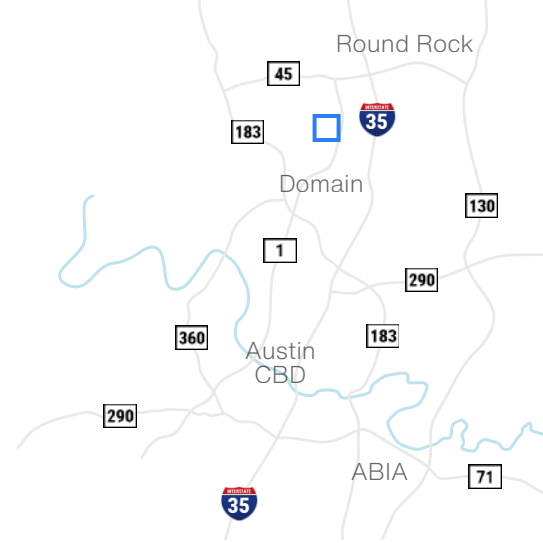


# Northtech Business Center 9

4616 West Howard Lane - Austin, TX 78728

**5,053 SF**  
**Office/Warehouse Space**



Available Suites

**Suite 925 - 5,053 SF**

## Building Features



**40% Warehouse**



**60% Office**



**1 Dock High Door,  
1 Loading Ramp**



**24' Clear Height**



**Less than 10 Mins.  
from The Domain**



**Quick Access to  
MoPac & TX45**



**Davis Bass**  
bass@hpitx.com  
(512) 203-5130

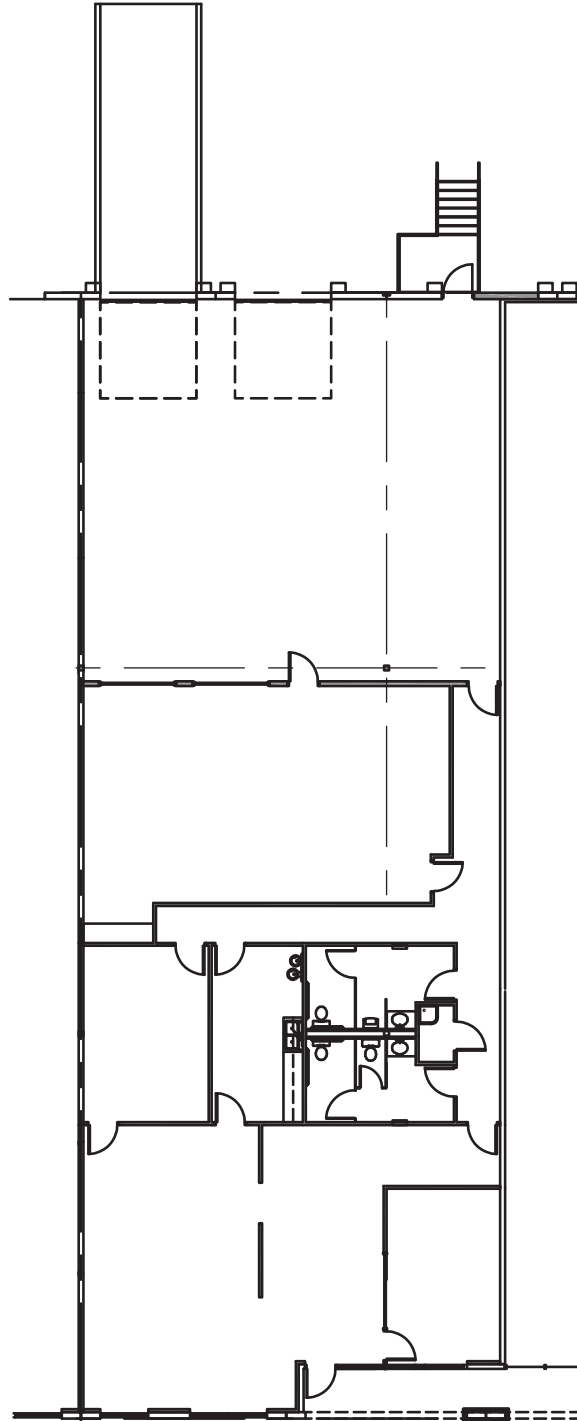
**Brooks Benkendorfer**  
brooksbenkendorfer@hpitx.com  
(512) 848-2582

No warranty or representation, expressed or implied, is made as to the accuracy of the information contained herein, and same is submitted subject to errors, omissions, change of price, rental or other conditions, withdrawal without notice, and to any special listing conditions imposed by the principals.

# Northtech Business Center 9

4616 West Howard Lane - Austin, TX 78728

**Suite 925**  
**5,053 SF**  
**Office/Warehouse**



**Davis Bass**  
bass@hpitx.com  
(512) 203-5130

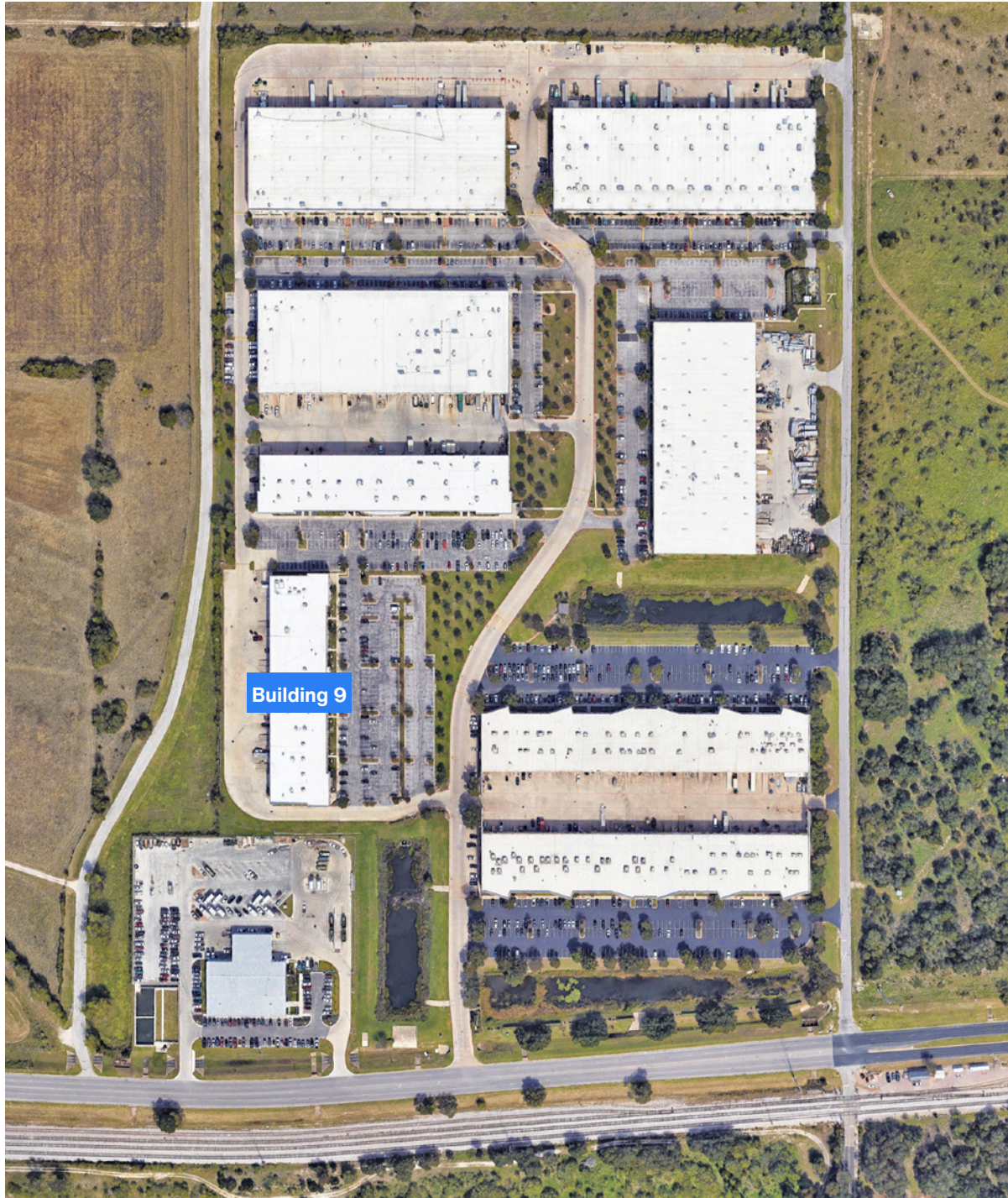
**Brooks Benkendorfer**  
brooksbenkendorfer@hpitx.com  
(512) 848-2582

No warranty or representation, expressed or implied, is made as to the accuracy of the information contained herein, and same is submitted subject to errors, omissions, change of price, rental or other conditions, withdrawal without notice, and to any special listing conditions imposed by the principals.

# Northtech Business Center 9

**Suite 925**  
**5,053 SF**  
**Office/Warehouse**

4616 West Howard Lane - Austin, TX 78728



**Davis Bass**  
bass@hpitx.com  
(512) 203-5130

**Brooks Benkendorfer**  
brooksbenkendorfer@hpitx.com  
(512) 848-2582

No warranty or representation, expressed or implied, is made as to the accuracy of the information contained herein, and same is submitted subject to errors, omissions, change of price, rental or other conditions, withdrawal without notice, and to any special listing conditions imposed by the principals.