

---

# Dadeland @ 9700

## OFFICE SPACE SUBLEASE

9700 South Dixie Highway | Miami, FL 33156

Space Available: **9,575 SF on the 5th floor**  
Lease Rate & Type: **\$29.50 PSF + Electric and Janitorial**  
Sublease Term: **Through November 30, 2027**

### For More Information

**Richard Bamonte**

+1 305 205 8569

[rbamonte@naimiami.com](mailto:rbamonte@naimiami.com)

**Robert Eckstein**

+1 786 367 3569

[reckstein@naimiami.com](mailto:reckstein@naimiami.com)



[naimia-ftl.com/properties](http://naimia-ftl.com/properties)

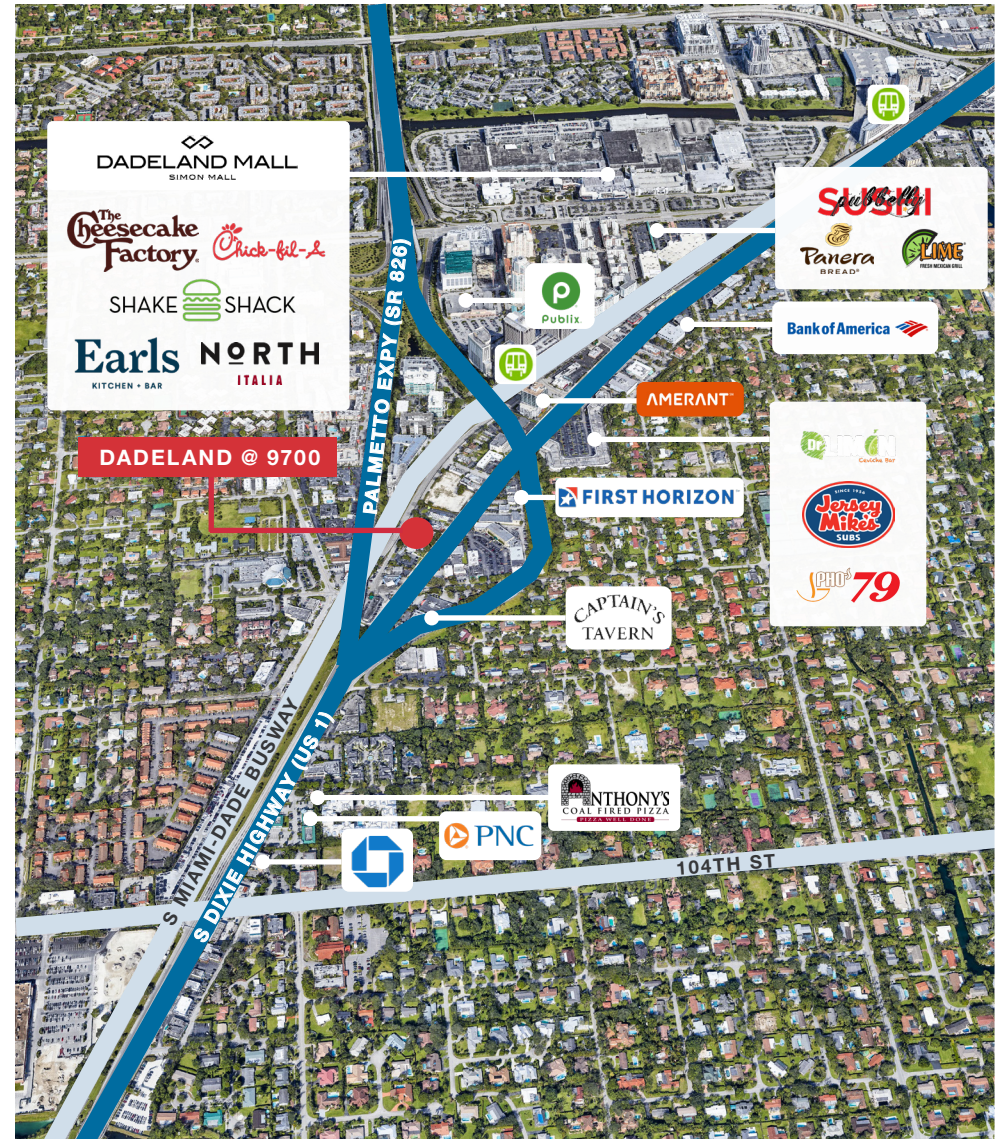
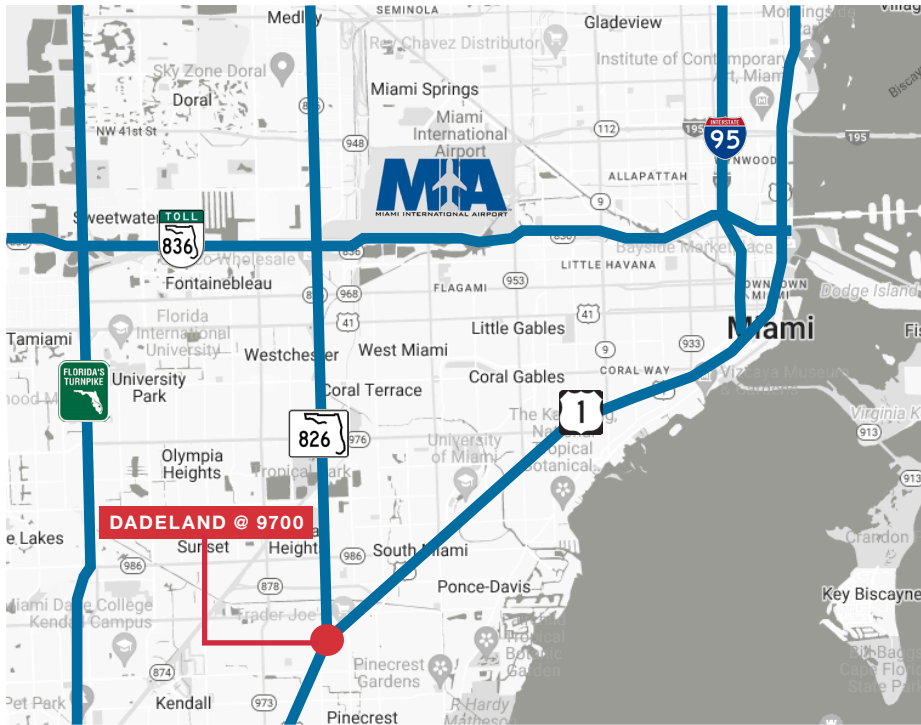


Office



# Map

9700 South Dixie Highway | Miami, FL 33156



## Location Features

- Strategically located at intersection of Palmetto Expy and US-1
- Excellent ingress / egress at the signalized intersection of 98th street and US1
- Building signage available for full floor tenant
- 5 minute walk to Dadeland Mall and all amenities surrounding it
- Walking distance to various fast casual and full service restaurants and banks



# Dadeland @ 9700

9700 South Dixie Highway | Miami, FL 33156

## Property Features

- Professional and upscale office tower with high-end lobby and common area finishes
- Secure access with lobby security
- Recently remodeled lobby and building common areas
- Private restrooms on the 5th floor
- 19 private offices along the window line
- Abundant covered parking



9655 South Dixie Highway, Suite 300, Miami, FL 33156

+1 305 938 4000

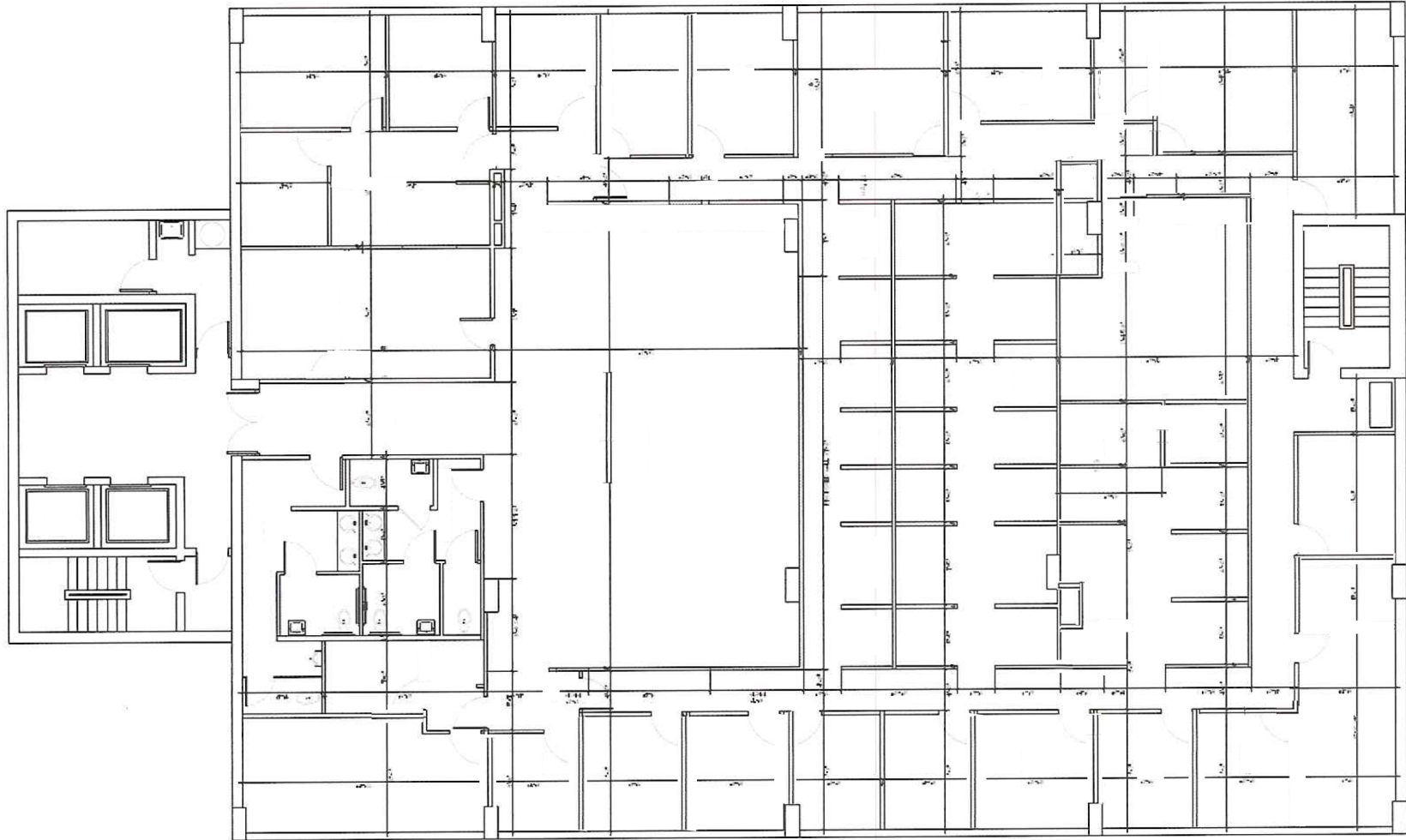
naimia-ftl.com

NO WARRANTY OR REPRESENTATION, EXPRESS OR IMPLIED, IS MADE AS TO THE ACCURACY OF THE INFORMATION CONTAINED HEREIN, AND THE SAME IS SUBMITTED SUBJECT TO ERRORS, OMISSIONS, CHANGE OF PRICE, RENTAL OR OTHER CONDITIONS, PRIOR SALE, LEASE OR FINANCING, OR WITHDRAWAL WITHOUT NOTICE, AND OF ANY SPECIAL LISTING CONDITIONS IMPOSED BY OUR PRINCIPALS NO WARRANTIES OR REPRESENTATIONS ARE MADE AS TO THE CONDITION OF THE PROPERTY OR ANY HAZARDS CONTAINED THEREIN ARE ANY TO BE IMPLIED.

# Floor Plan

9700 South Dixie Highway | Miami, FL 33156

9,575 SF AVAILABLE ON THE 5TH FLOOR



\*Above is a graphic representation of the configuration of the space. It may not be 100% accurate.



📍 9655 South Dixie Highway, Suite 300, Miami, FL 33156

☎ +1 305 938 4000

🌐 [naimia-ftl.com](http://naimia-ftl.com)

**Richard Bamonte**

+1 305 205 8569

[rbamonte@naimiami.com](mailto:rbamonte@naimiami.com)

**Robert Eckstein**

+1 786 367 3569

[reckstein@naimiami.com](mailto:reckstein@naimiami.com)

NO WARRANTY OR REPRESENTATION, EXPRESS OR IMPLIED, IS MADE AS TO THE ACCURACY OF THE INFORMATION CONTAINED HEREIN, AND THE SAME IS SUBMITTED SUBJECT TO ERRORS, OMISSIONS, CHANGE OF PRICE, RENTAL OR OTHER CONDITIONS, PRIOR SALE, LEASE OR FINANCING, OR WITHDRAWAL WITHOUT NOTICE, AND OF ANY SPECIAL LISTING CONDITIONS IMPOSED BY OUR PRINCIPALS NO WARRANTIES OR REPRESENTATIONS ARE MADE AS TO THE CONDITION OF THE PROPERTY OR ANY HAZARDS CONTAINED THEREIN ARE ANY TO BE IMPLIED.