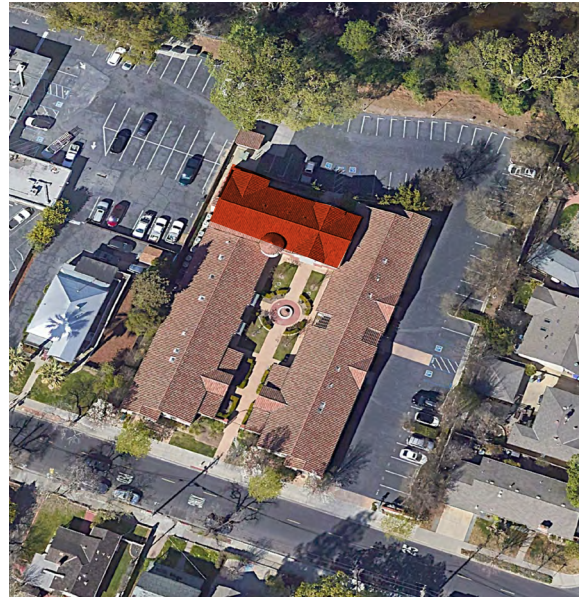


FOR SALE OR LEASE

315 - 317 RAY STREET

*Beautiful ±3,001 SF Office Condo Available
For Sale or Lease in Pleasanton, CA*





PROPERTY OVERVIEW

Beautiful ±3,001 SF office condo

Premium buildout with 12 foot ceilings & operable windows

Walk to shops, restaurants, and other amenities

Newer construction with ample on site parking

One block off of Main Street with easy access to I-680 & I-580

\$1.8M

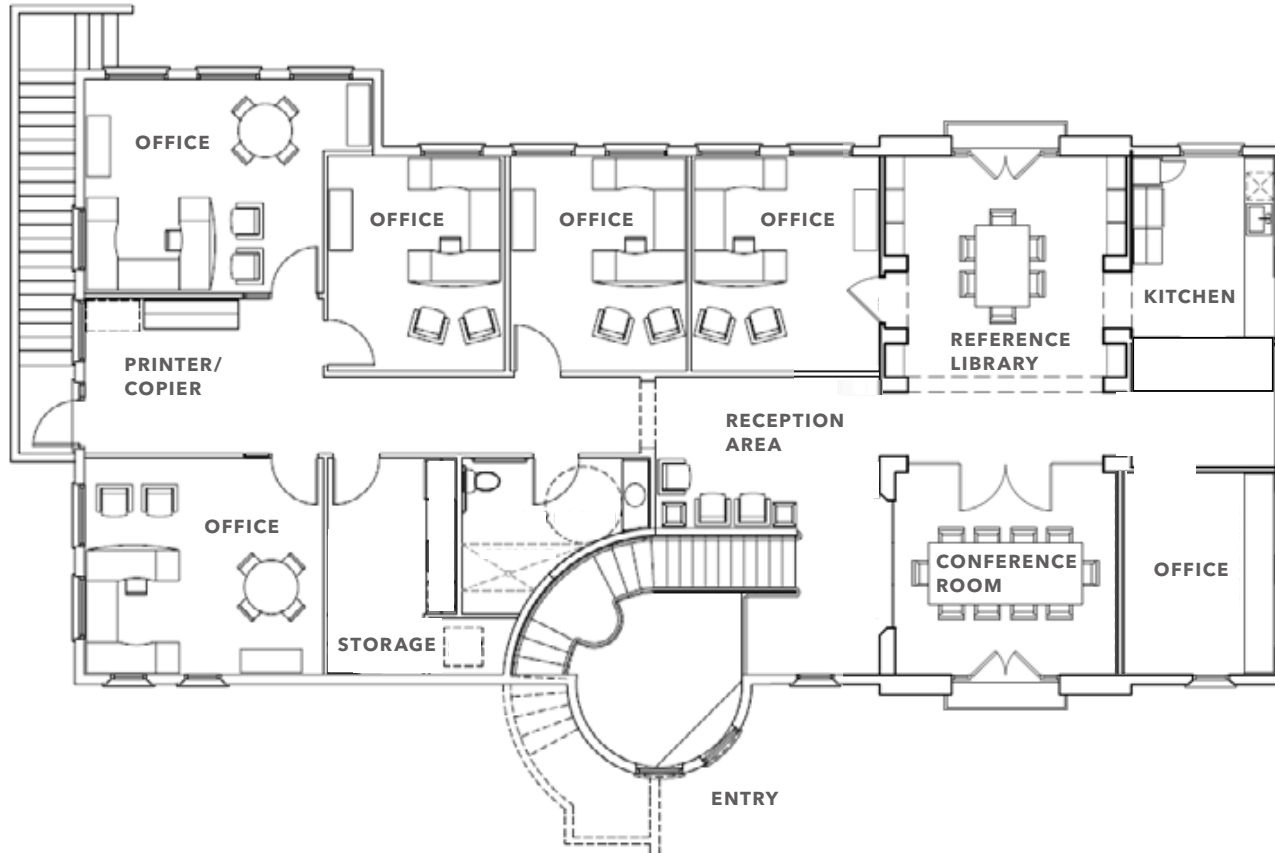
ASKING PRICE
(\$600 PSF)

CALL

BROKERS FOR
MORE INFORMATION



FLOOR PLAN



±3,001 SF

AVAILABLE

NOW

AVAILABLE

- 6 private offices
- 1 conference room
- Kitchen/break room
- Private restroom
- Storage

315 - 317 RAY STREET

10 MINS

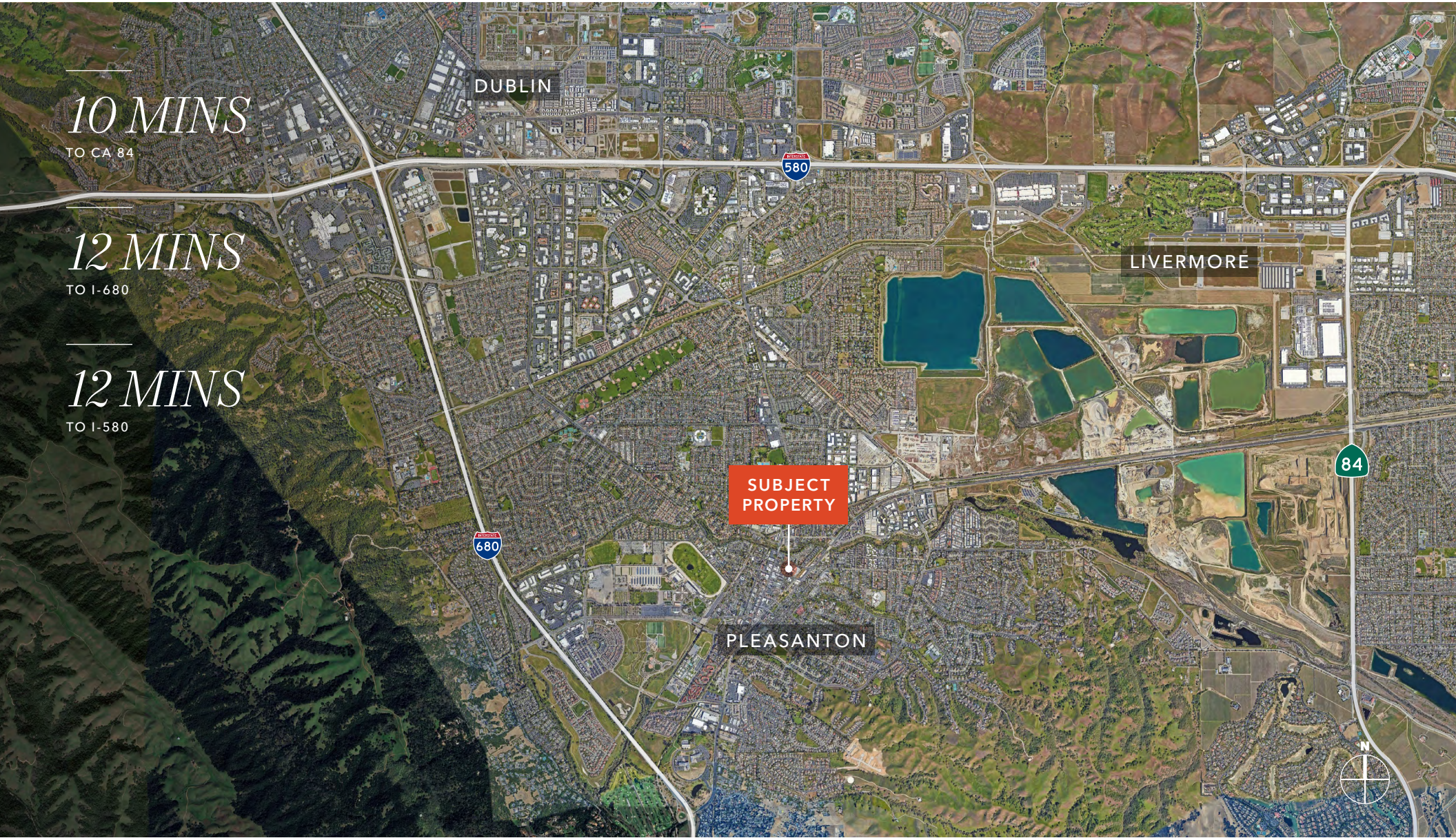
TO CA 84

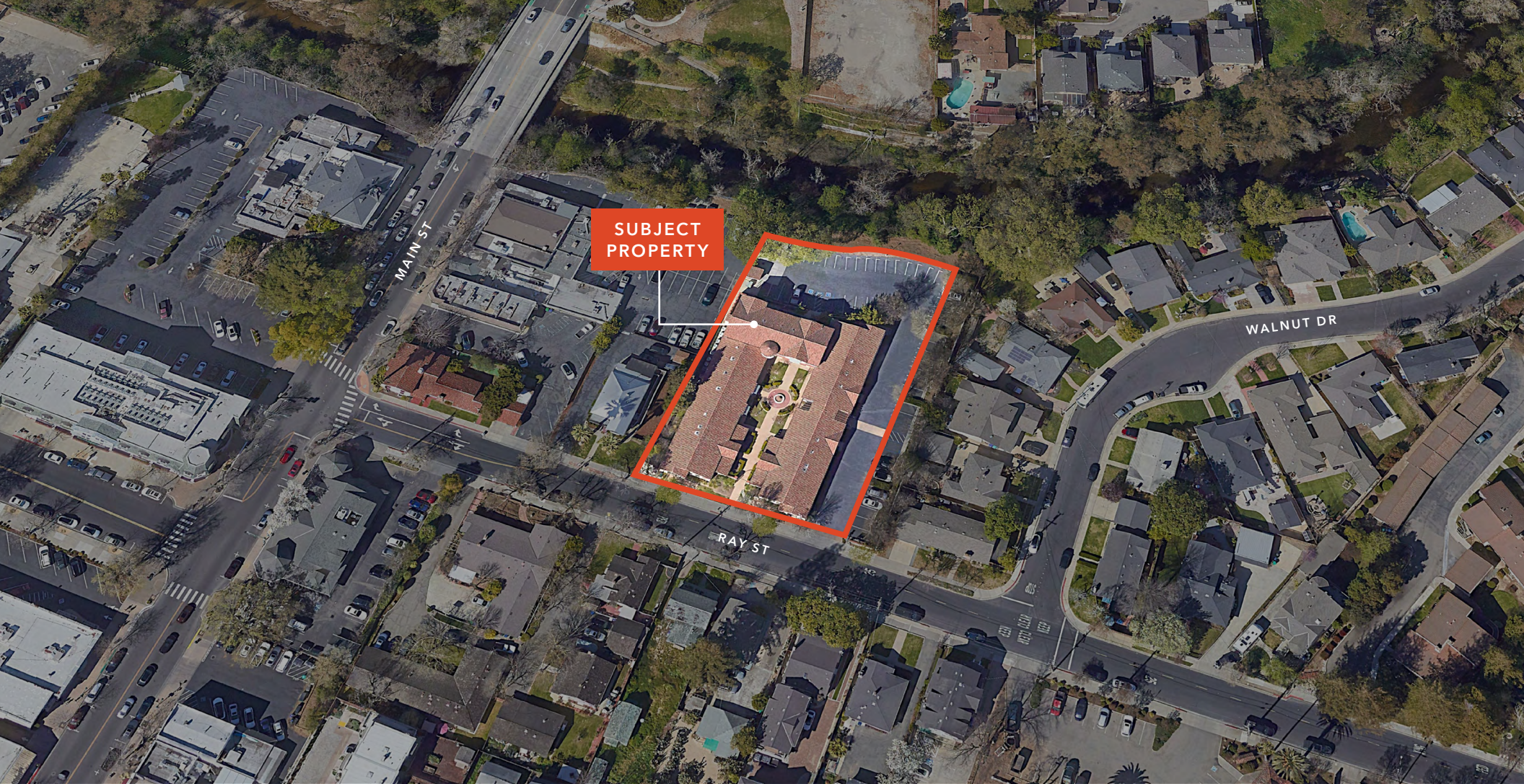
12 MINS

TO I-680

12 MINS

TO I-580





SUBJECT
PROPERTY

315 - 317 RAY STREET

*For more information on
this property, please contact*

WILL BALLOWE
925.389.2499
will.ballowe@kidder.com
LIC N° 02053125

SIMON VOGT
925.818.8321
simon.vogt@kidder.com
LIC N° 01879314

KIDDER.COM

This information supplied herein is from sources we deem reliable. It is provided without any representation, warranty, or guarantee, expressed or implied as to its accuracy. Prospective Buyer or Tenant should conduct an independent investigation and verification of all matters deemed to be material, including, but not limited to, statements of income and expenses. Consult your attorney, accountant, or other professional advisor.

