

AERIAL VIEW

THE OLD POST OFFICE
298 24TH STREET, OGDEN, UT



OFFICE/RETAIL

THE OLD POST OFFICE
298 24TH STREET, OGDEN, UT



OFFICE SPACE
FOR LEASE



PROPERTY
FEATURES

- For Lease: \$17 PSF
- Located on the corner of Grant Avenue and 24th Street
- Ample Parking
- Easy Access

Contact Leasing Agent for
current availability

AREA
DEMOGRAPHICS

	1 MILE	3 MILE	5 MILE
Population	15,416	85,902	165,494
Households	5,754	31,183	59,315
Income	\$43,724	\$63,831	\$72,586

NATE HARBERTSON
PRESIDENT/OWNER
801.393.2733 OFFICE
801.628.4322 CELL
nate@ppc-utah.com



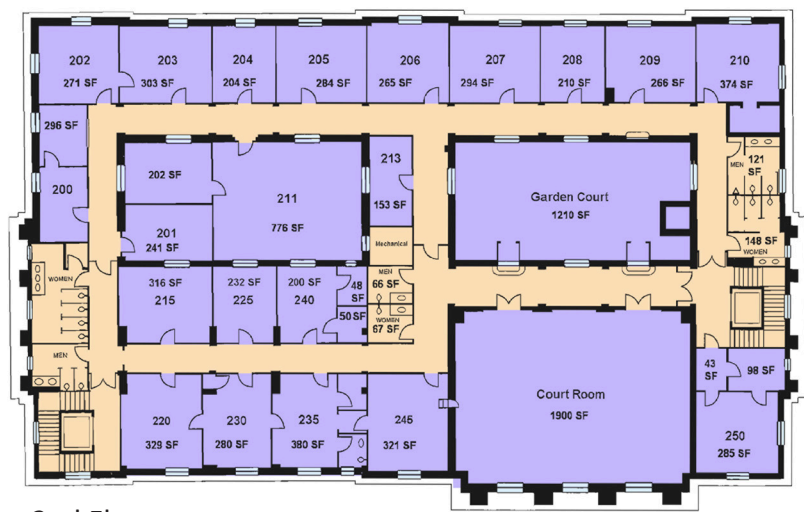
NO WARRANTY OR REPRESENTATION, EXPRESS OR IMPLIED, IS MADE AS TO THE ACCURACY OF THE INFORMATION CONTAINED HEREIN, AND THE SAME IS SUBMITTED SUBJECT TO ERRORS, OMISSIONS, CHANGE OF PRICE, RENTAL OR OTHER CONDITIONS, PRIOR SALE, LEASE OR FINANCING, OR WITHDRAWAL WITHOUT NOTICE, AND OF ANY SPECIAL LISTING CONDITIONS IMPOSED BY OUR PRINCIPALS. NO WARRANTIES OR REPRESENTATIONS ARE MADE AS TO THE CONDITIONS OF THE PROPERTY OR ANY HAZARDS CONTAINED THEREIN OR ANY TO BE IMPLIED.



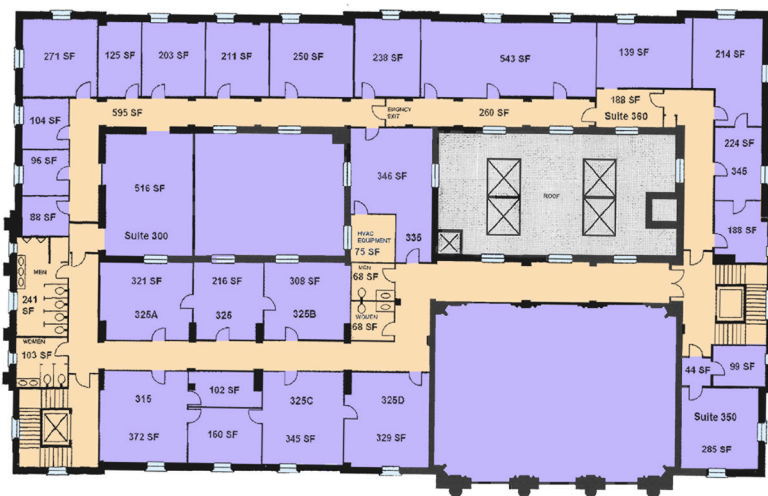
Lower Level



Main Floor



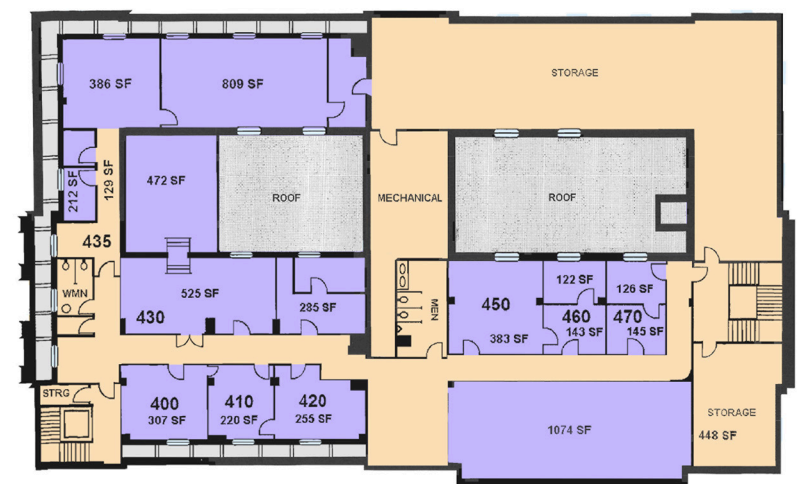
2nd Floor



3rd Floor



THE
OLD POST
OFFICE



4th Floor

