



4630  
CRANE

NEIGHBORHOOD  
PINGREE PARK



## 4630 CRANE

4630 Crane Street offers newly renovated warehouse / maker space for lease in Detroit's Pingree Park neighborhood, with 2,553 to 9,496 square feet of warehouse / maker space available, plus 1,041 square feet of well-designed second-floor office space featuring a shared conference room.

Fully renovated in 2025, the building features a new roof, skylights, doors, windows, overhead doors, plumbing, electrical systems, updated storefronts, and a resurfaced parking lot, providing modern functionality within a creative industrial setting. Tenants will join Virtuoso Design Build and Artisan Contracting, making the property well-suited for makers, fabricators, creative studios, and light industrial users seeking high-quality space in an active, design-oriented environment.

TABLE OF CONTENTS

2

INTRODUCTION

4

PROPERTY OVERVIEW

7

PROPERTY GALLERY

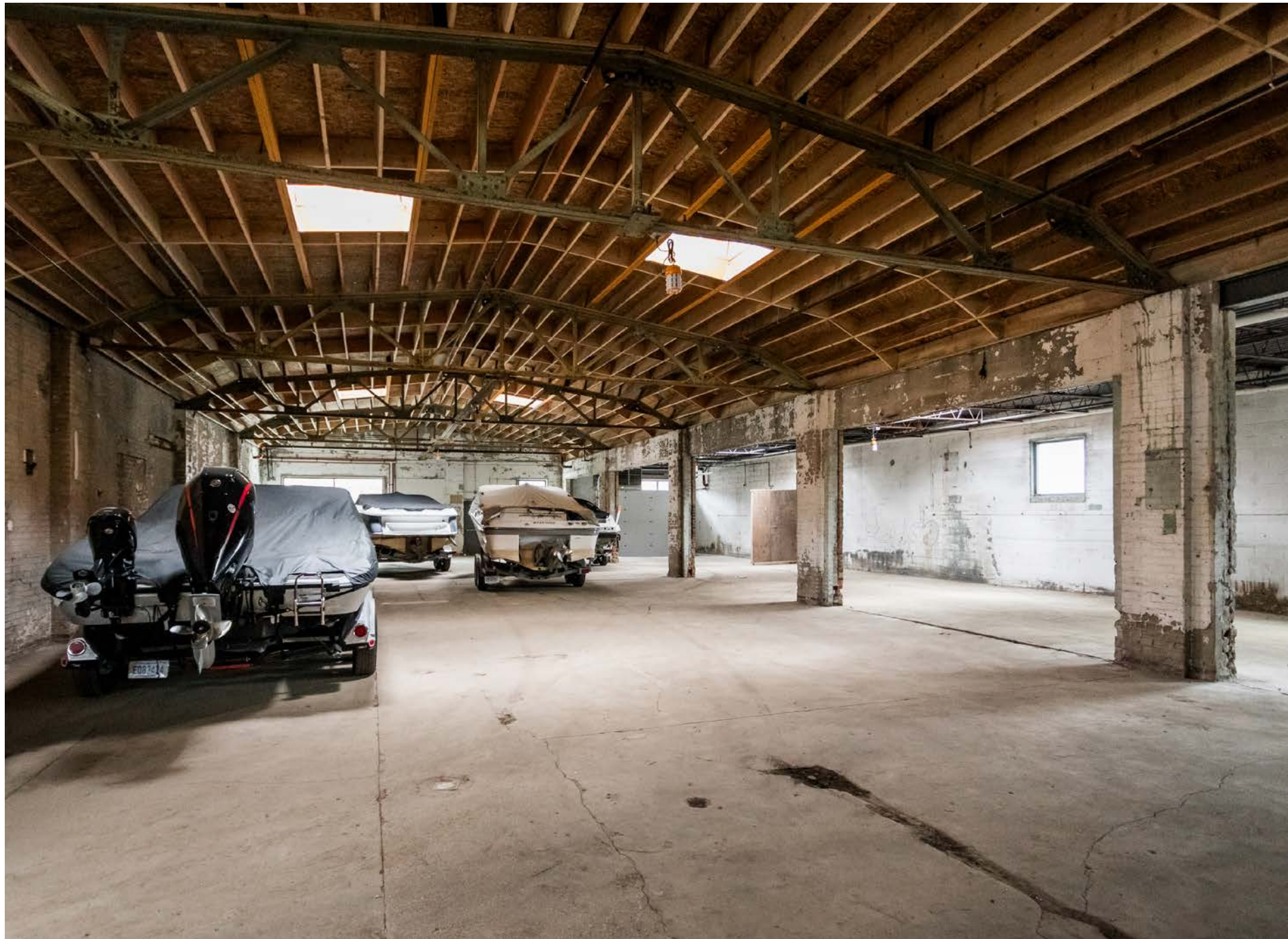
11

LOCATION OVERVIEW

15

CONTACT

# PROPERTY OVERVIEW



LEASE RATE

CONTACT BROKER

ADDRESS

4630 CRANE ST, DETROIT, MI 48214

SIZE

2,553 - 9,496 SF (2 parking lots available)

YEAR RENOVATED

2025

JOIN

VIRTUOSO DESIGN BUILD AND ARTISAN CONTRACTING

SPACE TYPE

WAREHOUSE / MAKER SPACE / OFFICE

CONSTRUCTION

BRICK AND BLOCK MASONRY / BOWSTRING TRUSS ROOF

NEIGHBORS

Pingree Park, Detroit Prep, Stellantis Assembly Plant, the Shepard, the Lantern, Two Birds, Sister Pie, Marrow, Faircloth boutique, Eugenie, Red Hook, Norm’s Diner, Spot Lite, Detroit Body Garage



NEIGHBORHOOD

Pingree Park – Detroit

LOCATION

Near Gratiot Ave & Forest Ave  
on Detroit’s East Side,  
just off the Gratiot corridor

FEATURES

- Renovated in 2025 with new roof, skylights, storefronts, windows, doors, and upgraded plumbing and electrical
- 2,553–9,496 SF of warehouse/ maker space plus 1,041 SF of second-floor office
- Design-forward industrial environment with established maker and contracting tenants
- East Side location near Gratiot & Forest, just off the Gratiot corridor with I-94 access

FLOOR PLAN



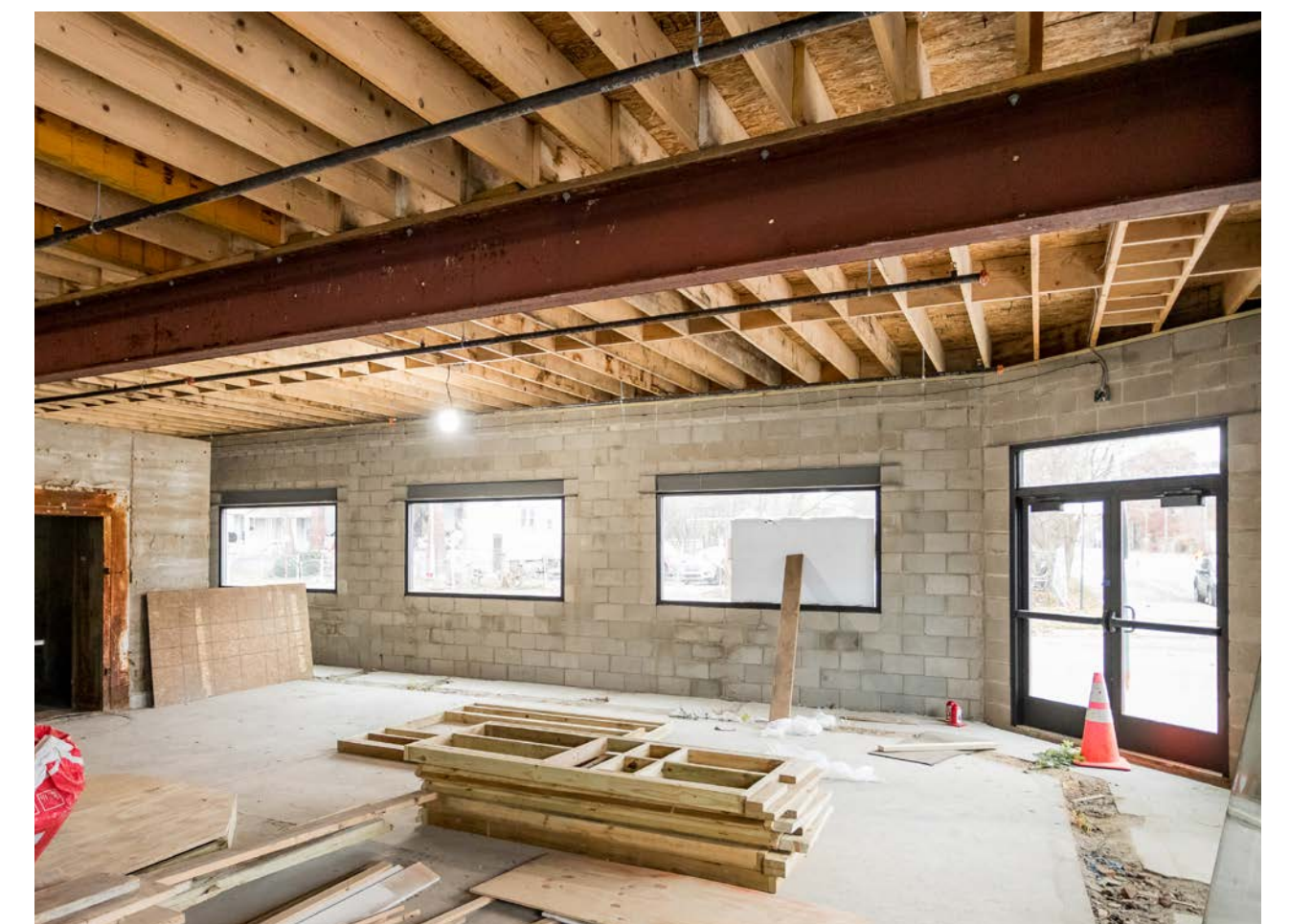
# PROPERTY GALLERY





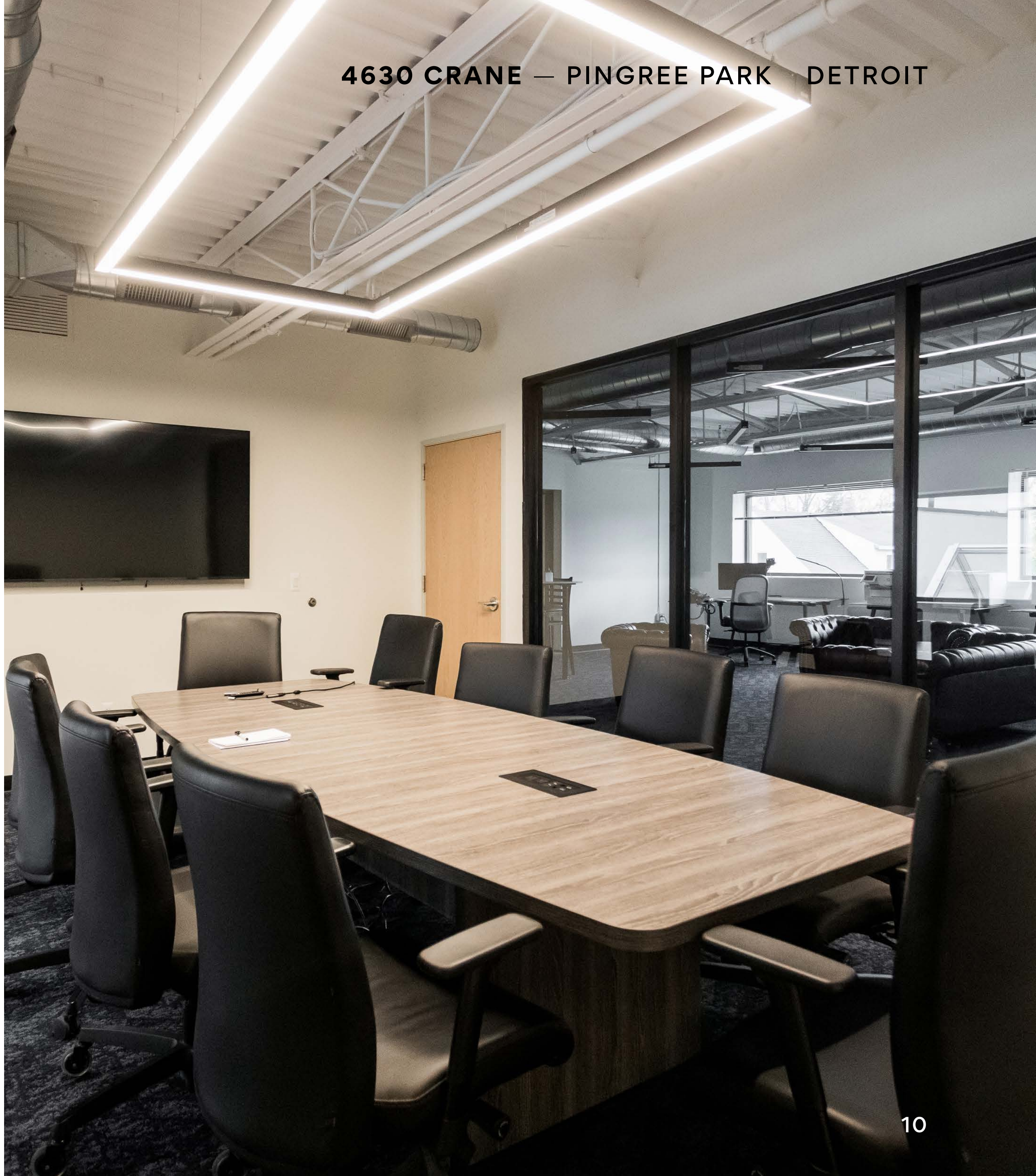
[CLOCKWISE FROM ABOVE]  
FOREST & CRANE FRONTAGE  
NEIGHBORHOOD AND  
PROXIMITY TO DOWNTOWN.  
AERIAL VIEW





[CLOCKWISE FROM ABOVE]  
INTERIOR WAREHOUSE VIEW FEATURING  
EXPANSIVE OPEN FLOOR AREA AND SKYLIGHT,  
GARAGE DOOR ACCESS, FRONT DOOR ENTRY  
WITH ABUNDANT NATURAL LIGHT





4630 CRANE — PINGREE PARK DETROIT



[CLOCKWISE FROM ABOVE]  
SECOND-FLOOR OFFICE INTERIORS  
FEATURING AN OPEN KITCHEN,  
SHARED CONFERENCE ROOM, AND  
PRIVATE OFFICES



# LOCATION OVERVIEW



## PINGREE PARK

Pingree Park is a centrally located Detroit neighborhood known for its industrial heritage and growing community of makers, contractors, and creative businesses. Positioned near I-94, the Lodge Freeway, and major employment centers, the area offers convenient regional access while retaining a gritty, authentic character that continues to attract reinvestment and adaptive reuse.





AREA DEVELOPMENTS

The Shepherd

The campus grounds, designed by the Office of Strategy + Design (OSD), include a boutique bed and breakfast (ALEO), McArthur Binion’s Modern Ancient Brown Foundation, a public skatepark designed by Tony Hawk, and a sculpture park honoring the late Detroit artist Charles McGee. The Shepherd is part of Library Street Collective’s ongoing commitment to Detroit’s Little Village neighborhood.



Lantern

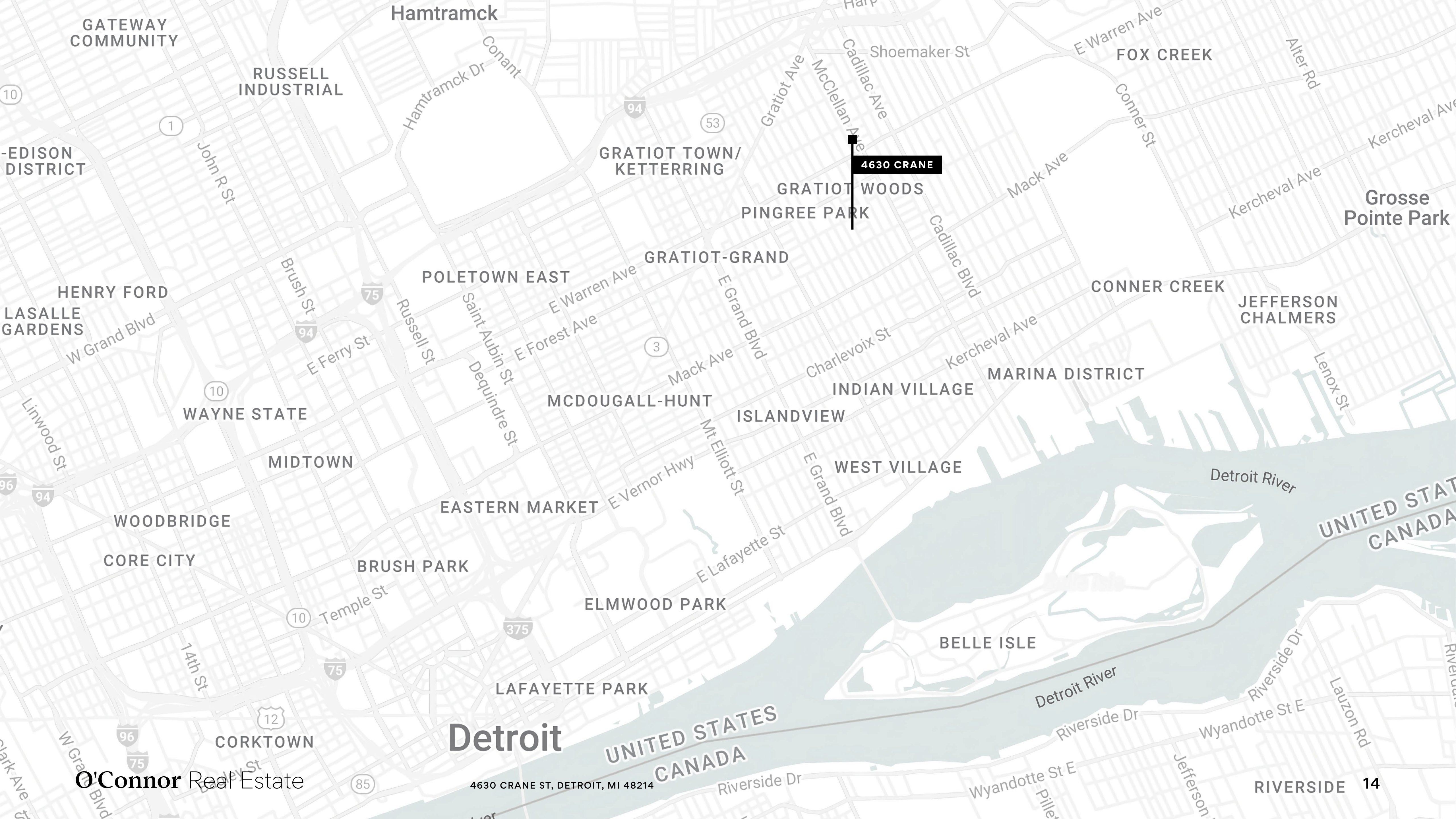
A new mixed-use arts hub is being realized in East Village through the redevelopment of a 100-year-old vacant industrial complex that will house two local arts non-profits and include approximately 5,300 square feet of affordable artist studios, an art gallery, and 4,000 square feet of creative retail – all connected by a 2,000-square-foot courtyard.

Schaap Center for the Arts

The century-old St. Charles Borromeo School on Townsend Street in Islandview has been converted into 25 upscale condominiums while a phase two development, the Saint Charles Terraces, will provide 10 newly constructed apartments. Additional development is planned.







4630 CRANE

Detroit

4630 CRANE ST, DETROIT, MI 48214

O'Connor Real Estate



A TRUSTED AND RESPECTED  
MEMBER OF THE COMMUNITY,  
O'CONNOR REAL ESTATE  
BRINGS 20 YEARS OF  
EXPERIENCE AND EXPERTISE  
TO THE COMMERCIAL OFFICE  
AND RETAIL MARKET.

For more information about 4630 Crane  
please contact O'Connor Real Estate

Vincent Mazzola  
+ 313 704 2678  
[vincent@oconnordetroit.com](mailto:vincent@oconnordetroit.com)

**O'Connor** Real Estate

The information used in this marketing material was taken from sources believed to be reliable. O'Connor Real Estate makes no representation, warranty, or endorsement made as to the accuracy, reliability, adequacy, or completeness of any information or analysis contained herein and disclaims any and all liability that may be based on such information, errors therein or omissions therefrom. You and your advisors should conduct a careful and independent investigation of the property to determine your satisfaction with the suitability of the property for your needs.