

1790

SWARTHMORE AVENUE
LAKEWOOD | NEW JERSEY



INDUSTRIAL WAREHOUSE FOR LEASE

1790

SWARTHMORE AVENUE LAKEWOOD | NEW JERSEY

Located in Lakewood's bustling industrial hub, 1790 Swarthmore Avenue offers a versatile opportunity for lease. This site is ideal for a range of light industrial, storage, or distribution operations, benefiting from flexible access options and solid infrastructure. The property includes both dock-high and drive-in loading capabilities, accommodating a variety of equipment and freight configurations. An expansive on-site parking area supports smooth logistics for both staff and commercial vehicles.

Centrally located, this property offers direct access to Swarthmore Avenue, with close proximity to New Hampshire Avenue, Route 70, and Route 9. Regional access is further enhanced by nearby connections to the Garden State Parkway, enabling seamless distribution throughout Ocean County and the greater New Jersey area.

PROPERTY OVERVIEW

Property Type	Industrial Warehouse
Size	8,000 SF
Ceiling Heights	26'
Docks/Drive-Ins	2/1
Possession	Immediate

ASKING RENT: UPON REQUEST

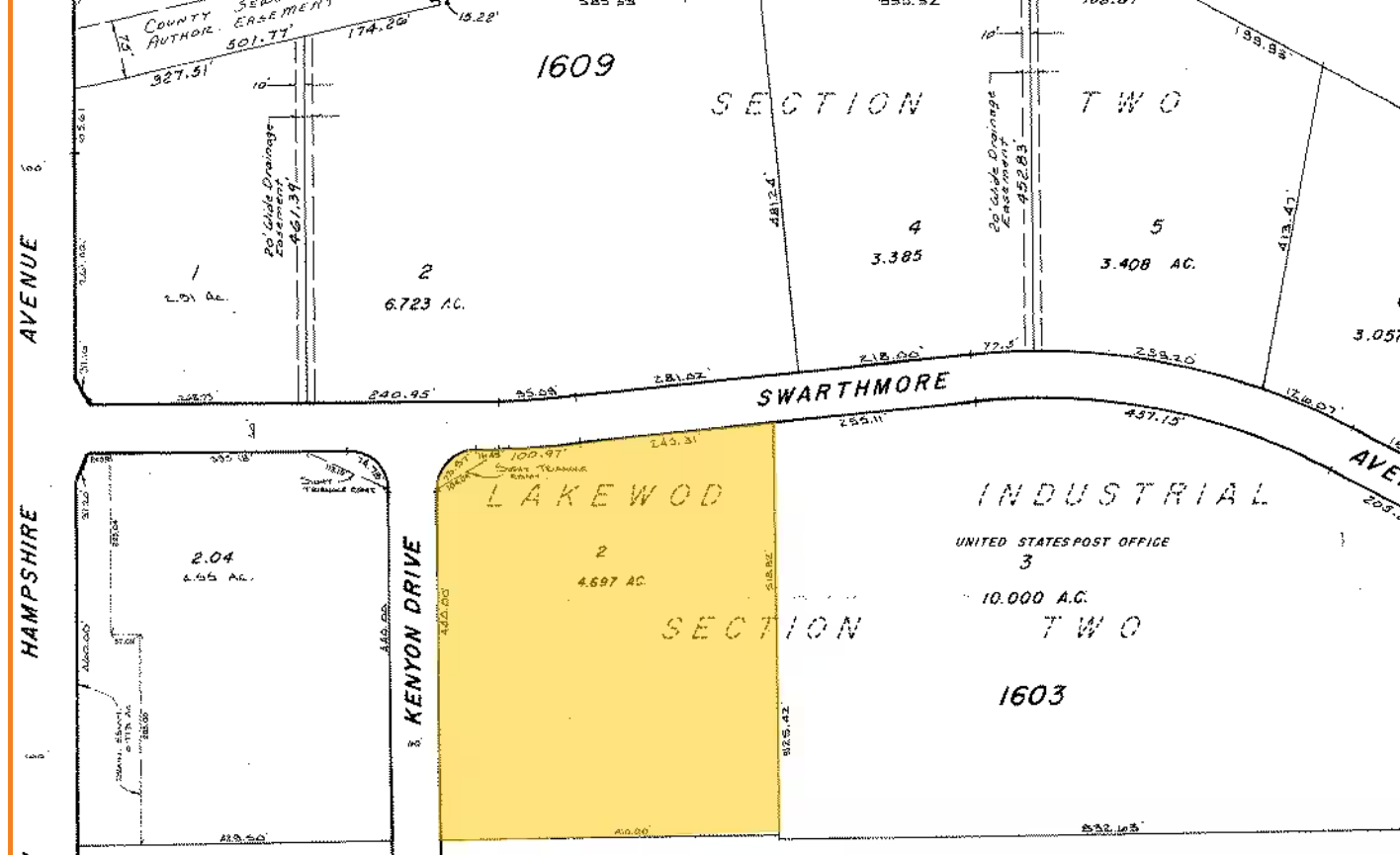


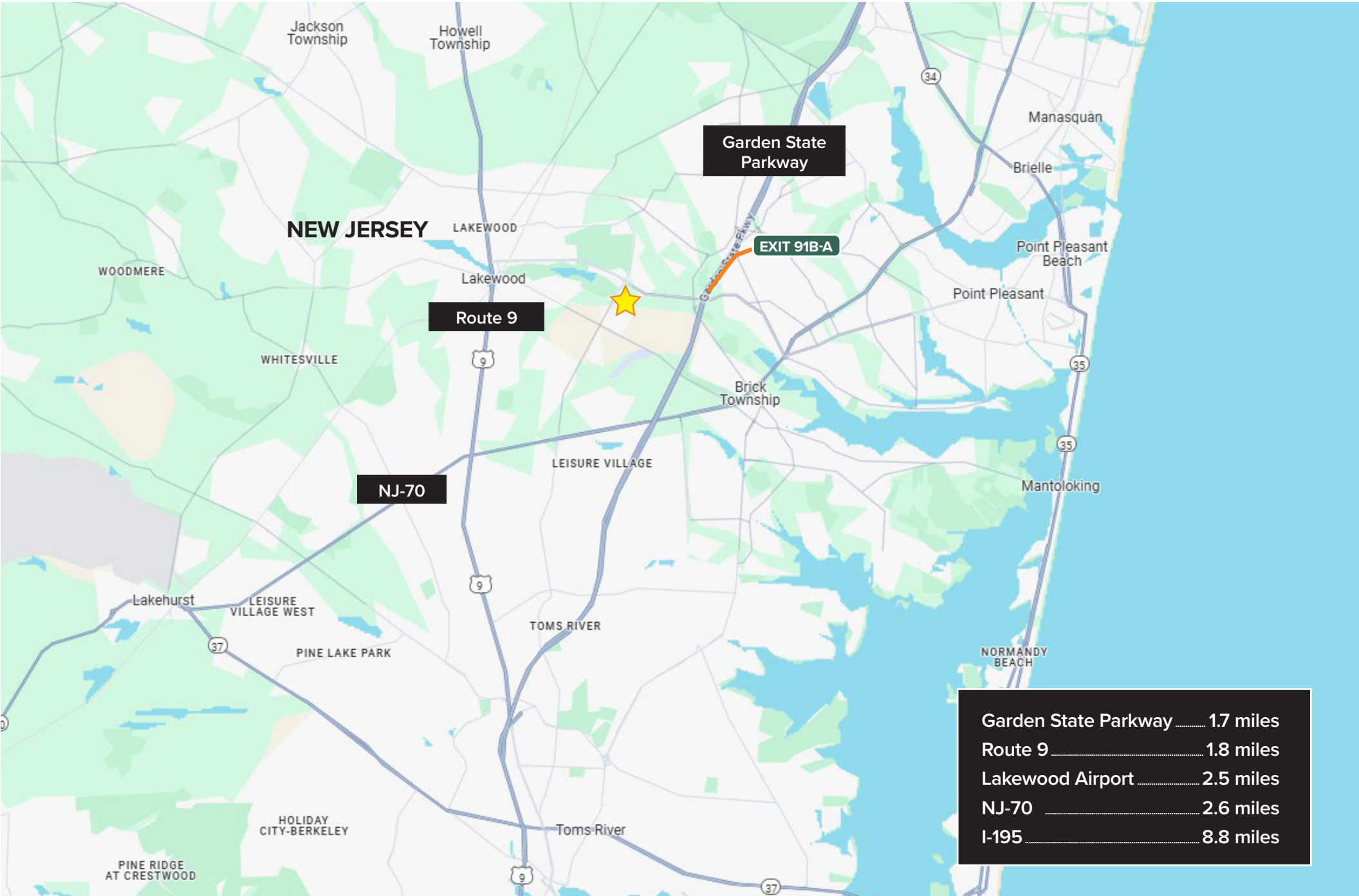
1790

SWARTHMORE AVENUE
LAKEWOOD | NEW JERSEY

ADDITIONAL INFO

- Dock high and drive-in loading bays
- 13' clear height
- Ample on-site parking
- Located in Lakewood's busy industrial district
- Minutes from the Garden State Parkway





FOR MORE INFORMATION,
PLEASE CONTACT:

AMERIQUE ASHEAR

M: 732.503.3820

E: AAshear@Ksrny.com

EMIL SHABOT

M: 917.669.4493

E: EShabot@Ksrny.com

YANKE CHAIMOWITZ

M: 732.503.3820

E: YChaimowitz@Ksrny.com

JACK ZALTA

M: 347.256.9281

E: JZalta@Ksrny.com



1385 Broadway, 22nd Floor
New York, NY 10018
212.417.9217
ksrny.com

All information supplied in this marketing presentation and/or flyer is from sources deemed reliable and is furnished subject to errors, omissions, modifications, removal of listings from sale/lease and to any listing condition. Any square footage, dimensions, floor plans and/or technical data set forth are approximations and are subject to further elaboration/confirmation.