

The Cannery Unit 210

1200 HARBOUR WAY SOUTH, RICHMOND, CA 94801



Unit 210 Description

Historic Cannery building redeveloped into multi-tenant industrial building. Unit 210 has been leased as "dead storage" due to lack of in-unit electricity

- Quick Access to I-580 & I-80
- Multiple Common Area Restrooms
- Extensive Skylights
- Additional Ind. Yard/IOS/Parking available for lease 0.5 to 2.0 acres

Lease Rate:	\$1.10 SF/month (IG)
--------------------	----------------------

Loading:	2 DH
-----------------	------

Available SF:	+/- 9,540 SF
----------------------	--------------

Clear Height:	11'-12'
----------------------	---------

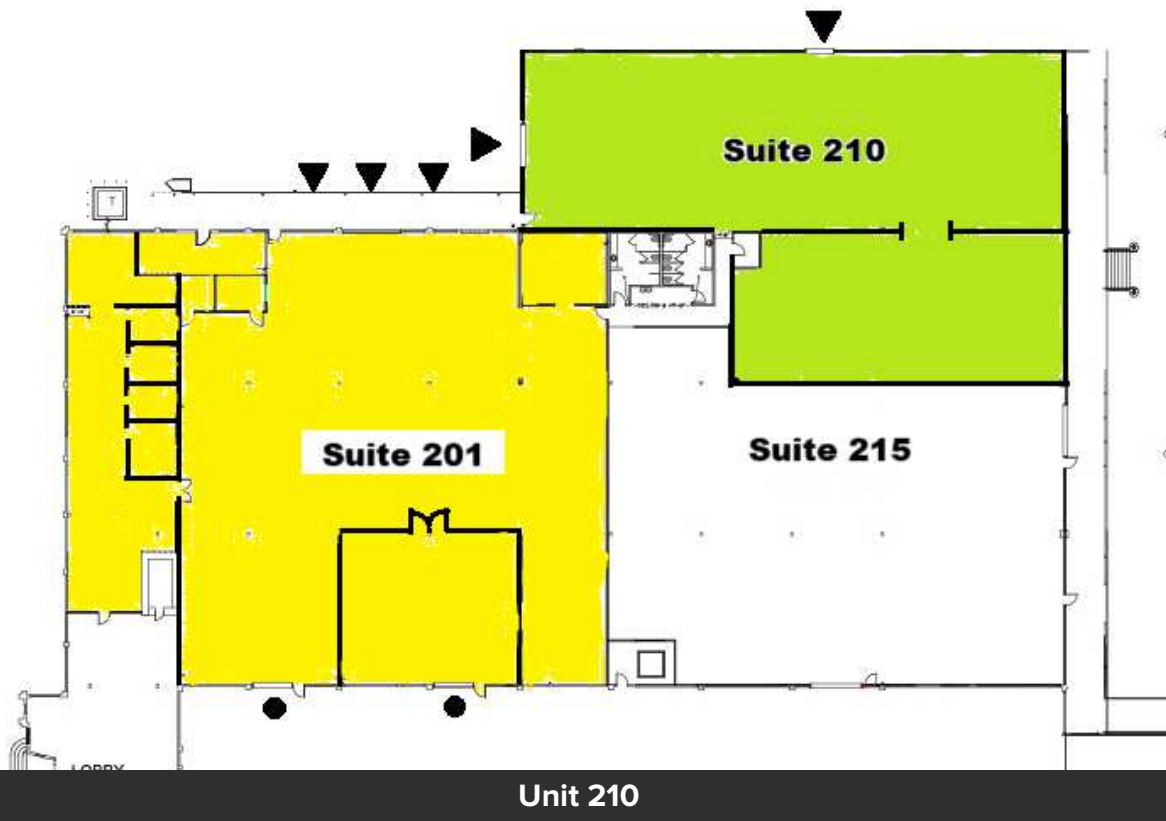
- Fire Sprinklers
- Walking distance to R&W Ferry and on-site AC Line #74 Bus Stop.
- Load Factor 11.5% (rentable vs. useable area)
- Unit 210 has been used for "dead storage"



Dante Guazzo
NAINORCAL.COM

Dante Guazzo
Vice President
dguazzo@nainorcal.com
510.336.4714
CalDRE #01301236

Suite 210



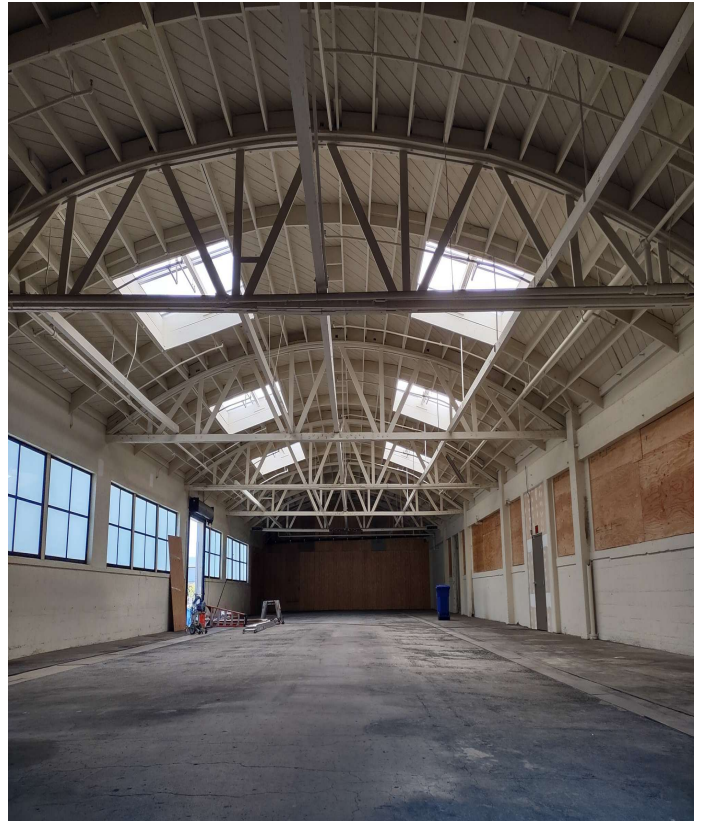
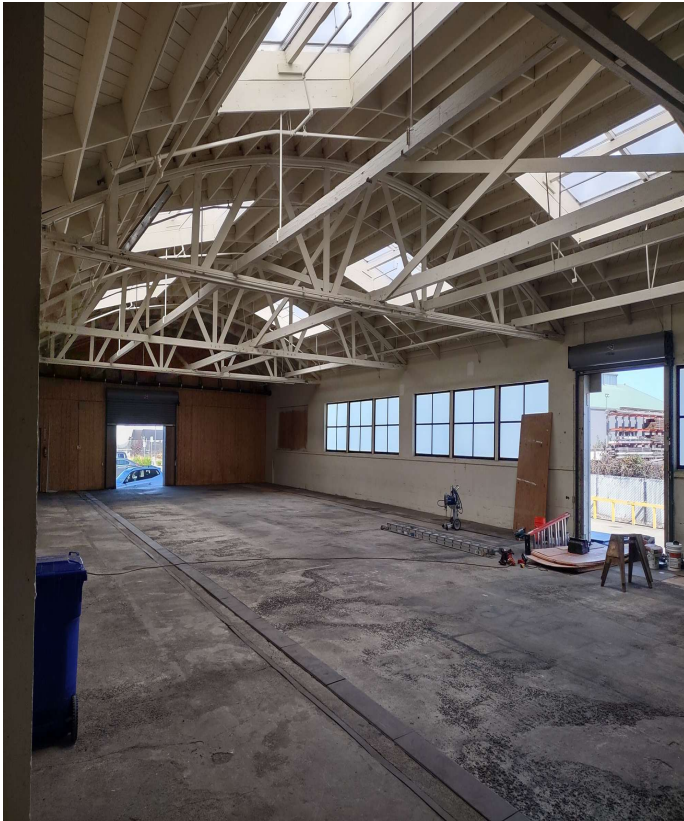
Location Information



For More Information

Dante Guazzo
Vice President
dguazzo@nainorcal.com
510.336.4714
CalDRE #01301236

Additional Photos



Location Information



For More Information

Dante Guazzo
Vice President
dguazzo@nainorcal.com
510.336.4714
CalDRE #01301236