



**AVAILABLE  
FOR LEASE**

**Available For Lease – Former**  
**Big Lots – 27,930 Sq Ft**  
**320 Eastern Shore Shopping Center, Fairhope,**  
**AL 36532**

**Property Drone Footage**  
**Available – Click Here**



# Disclaimer

Although Herrington Realty, Inc. has obtained information in this Offering Memorandum and any attachments to this Offering Memorandum regarding the property from sources it believes to be reliable, and believes the information to be correct, no representations or warranties, expressed or implied, are made as to the accuracy of such information. Any information referencing to measurements or age are approximate only. The recipient bears the sole responsibility for the verification of the accuracy of any information in this document or attachments and bears all the risk of such inaccuracies. Herrington Realty, Inc. shall have no liability or responsibility to any party for any loss or damage arising from the reliance by any party on the information in this Offering Memorandum or any attachments. One or more of the listing brokers associated with Herrington Realty are part owners in this property and are licensed real estate agents in the state of Mississippi and Alabama.

## Investment Sales Contacts

**Colby Herrington**  
**(251) 490-6995**  
**Colby@herringtonrealty.net**

**Parker Herrington**  
**(251) 459-3208**  
**Parker@herringtonrealty.net**



**Property Drone Footage  
Available – Click Here**

# SPACE HIGHLIGHTS

- Pricing: \$15 PSF NNN
- Total GLA: 27,930 +/- SF
- Interior Anchor Space in Eastern Shore Village – Located at the Intersection of Highway 98 (28,700+ VPD) and Fairhope Avenue (11,500+ VPD)
- Located Across the Street from Thomas Hospital & 2 Miles North of Fairhope High School
- New Construction Starbucks Built on Outparcel
- Fairhope is in Baldwin County, the Fastest Growing County in the State of Alabama

Herrington Realty is pleased to present an exceptional leasing opportunity at the Eastern Shore Village Shopping Center, located at the busy intersection of Fairhope Ave and Highway 98 in Fairhope, Alabama. The property features a 27,930 sq ft interior anchor space available at \$15 per square foot NNN, located across the street from Thomas Hospital—the premier medical facility in the area, and just 2 miles north of Fairhope High School. Enhancements to the center include a new construction Starbucks on an outparcel, adding to the area's appeal and foot traffic.

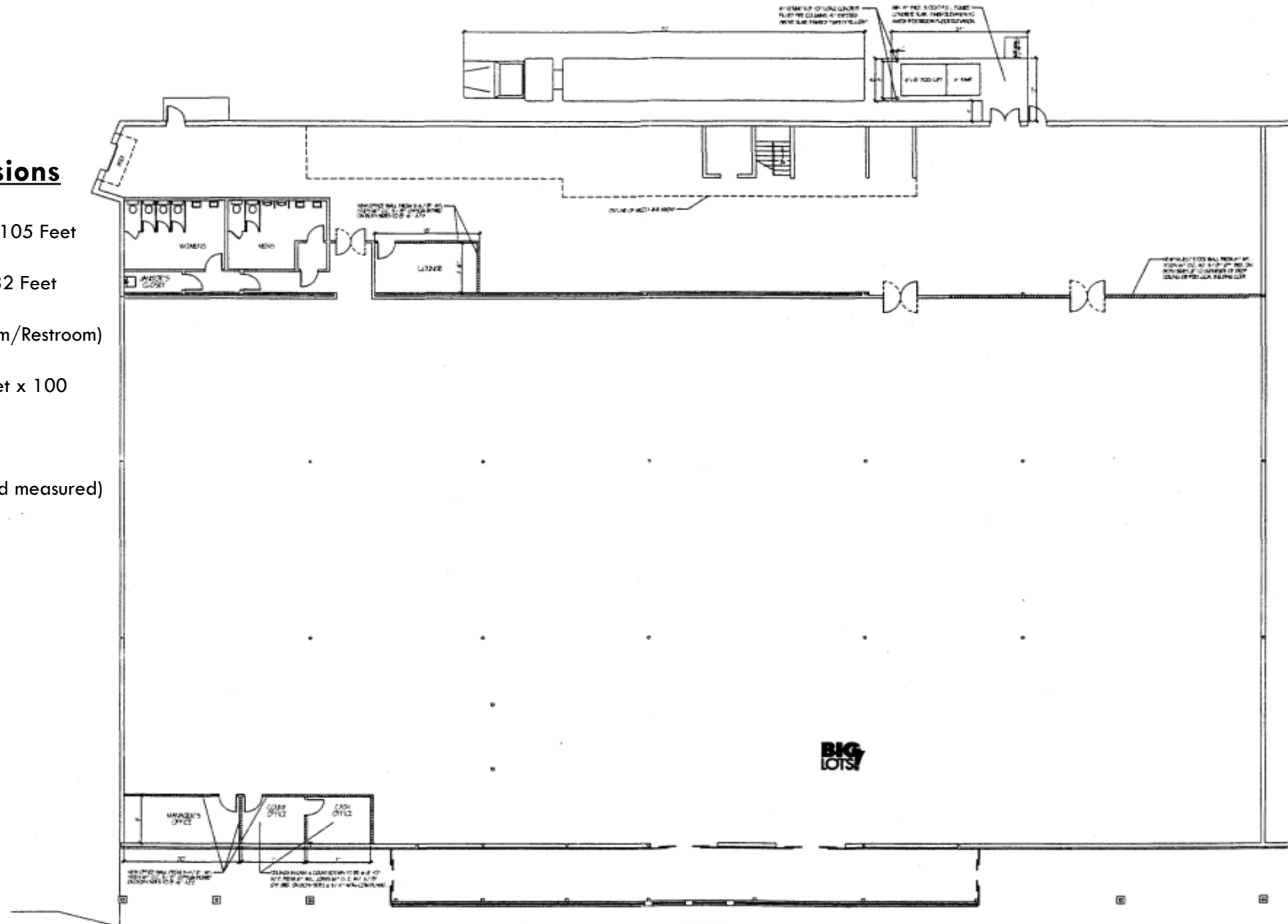
This vibrant city is renowned for its high quality of life and dynamic local economy, frequently celebrated by Southern Living magazine as one of the top small towns in the South for its coastal charm, thriving arts community, and spirited community events. With a growing population and rising retail sales, Fairhope has become home to some of the most sought-after property in the entire state and offers a prime business environment for retailers looking to enter one of the fastest growing markets in the state of Alabama.





## Space Dimensions

- Retail SF: 195 Feet x 105 Feet
- Rear SF: 195 Feet x 32 Feet  
(Stockroom/Breakroom/Restroom)
- Front Entrance: 10 Feet x 100 Feet
- Total SF: 27,715 (hand measured)





**Eastern Shore Village**  
**Tenants**



**Rotolo's**  
Pizzeria

LICKIN GOOD  
DONUTS

Pretty  
Nails

AVAILABLE  
FOR LEASE

**petsense**  
by Tractor Supply  
**CVS**  
pharmacy

THE  
SUNFLOWER  
CAFE

**Fairhope**  
Health Foods

**SHOE STATION**

**WINGFINGERS**

**STARBUCKS**  
COFFEE

**LARTIGUE'S**  
SEAFOOD MARKET  
EST. 1978

**YAK**  
The Kolamunda Kitchen

**SUPERCUTS**



# Property Photos





# Property Photos







Downtown Fairhope

Fairhope Ave - 11,500+ VPD



Highway 98 - 28,700+ VPD





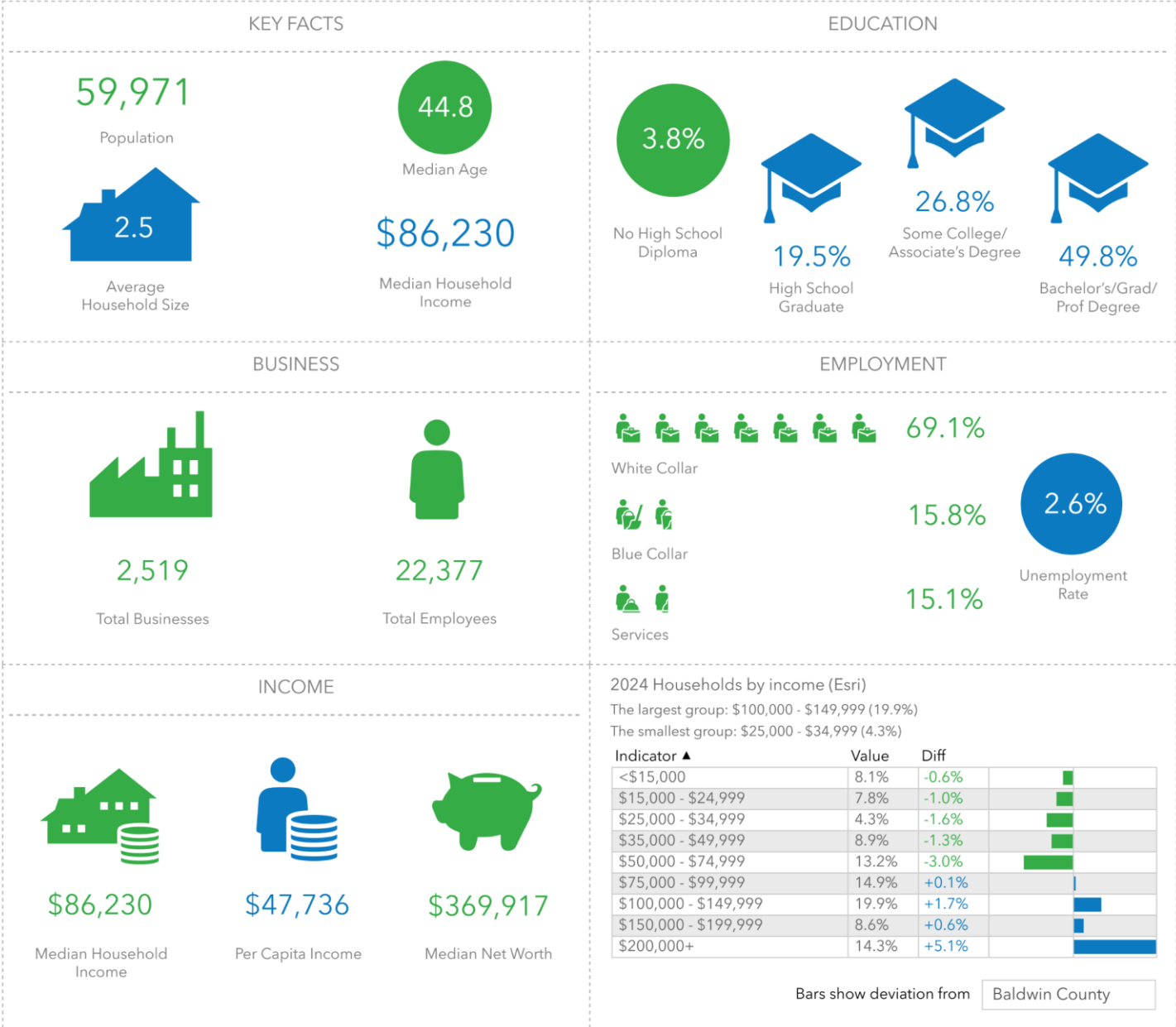
Fairhope, Alabama

Fairhope is a city in Baldwin County, Alabama on the eastern shoreline of Mobile Bay. Baldwin County has been one of the fastest growing counties in the state over the past 10 years and during that growth for the overall county, Fairhope stands in a league of its own. Fairhope has become home to some of the most sought-after real estate in the entire state and has been the beacon for growth along the coast. Fairhope has reported population growth of over 55% since 2010, resulting in a population of over 24,000 people.

Baldwin County, home to Alabama's famous beaches, is in the southwestern part of Alabama on the Gulf Coast. According the 2019 Census, the population exceeds 223,000 people. It is stated as the largest county in Alabama by area and is located on the eastern side of Mobile Bay. There has been a major shift in population on the gulf coast in the past few years as people are flocking to the beaches not just for the summer, but to live. Four of Alabama's 10 fastest-growing cities over the last decade and three of the top five are at or near the coast, showing the desire of Alabama residents to get closer to the coast. Two separate areas in Baldwin County have been designated as "Outstanding Alabama Water" by the Alabama Environmental Management Commission, which oversees the Alabama Department of Environmental Management, this recognition is considered the "highest environmental status" in the state. The pristine water on the coast of Alabama will continue to attract not only residents from around the state but also tourist from around the southeast for years to come.

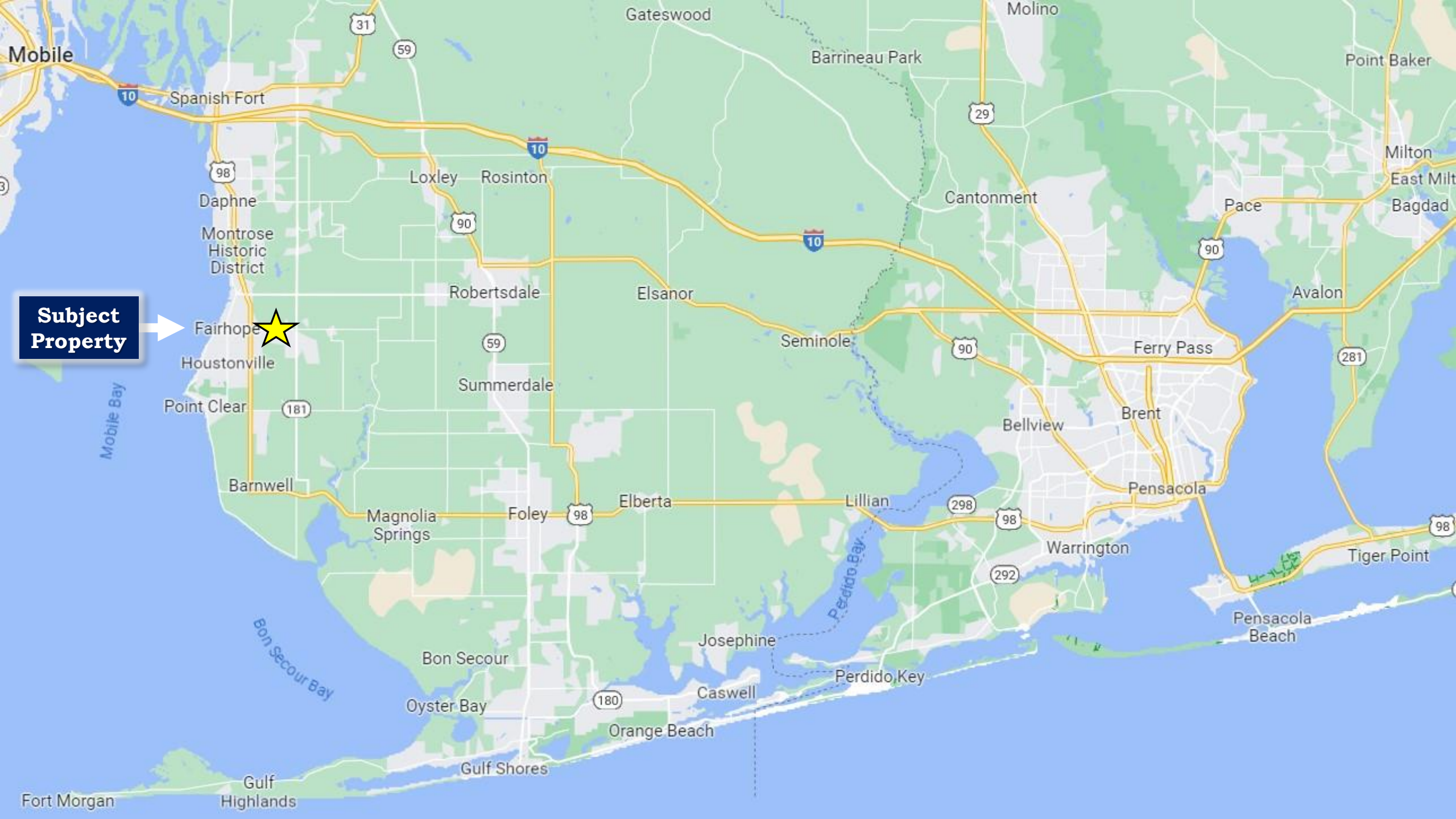
Key Facts

CVS  
Drive time of 15 minutes



Source: This infographic contains data provided by Esri (2024, 2029), Esri-Data Axle (2024). © 2024 Esri





**Subject  
Property**